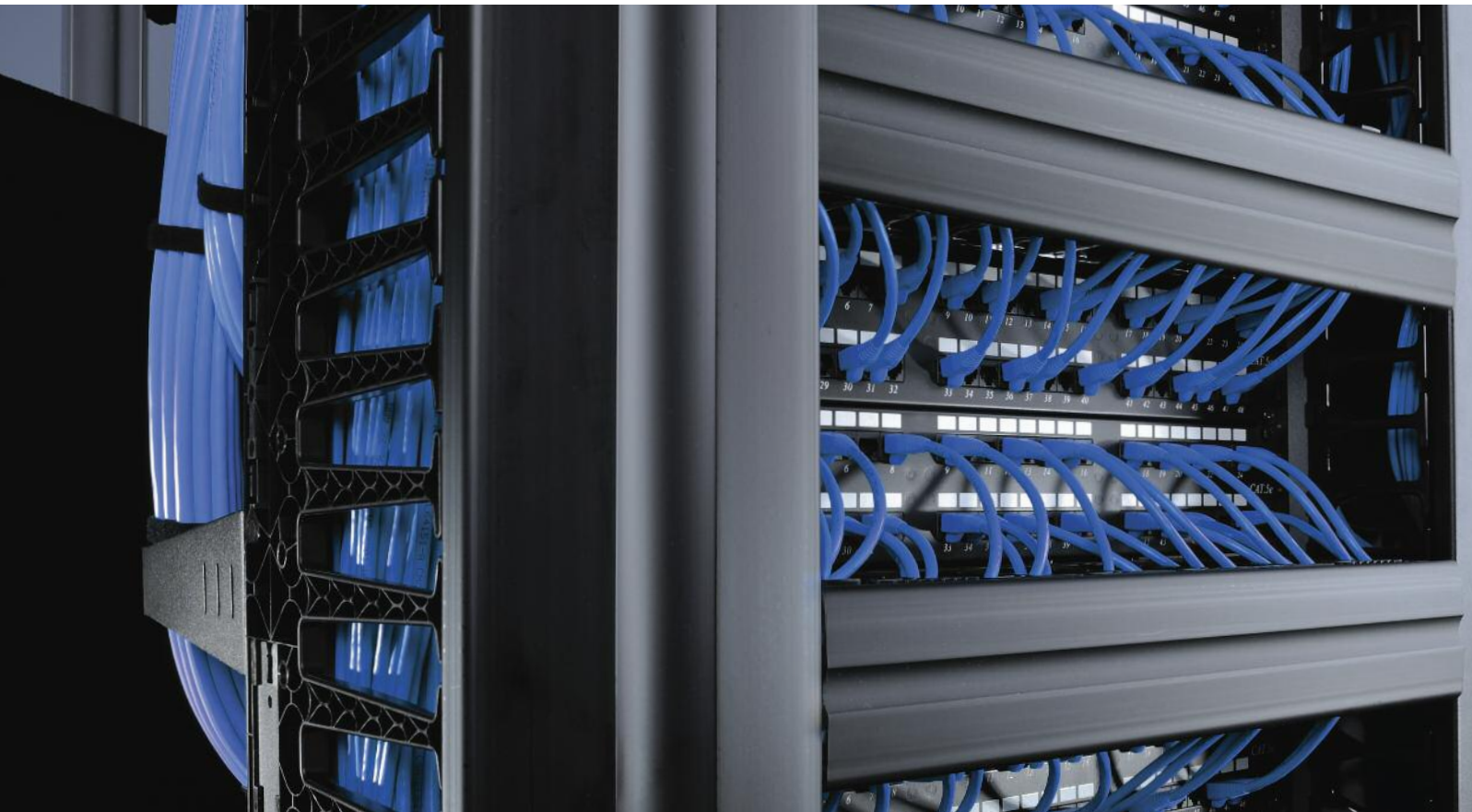
 Signature Solutions ...

## Cable Management Solutions



CHATSWORTH  
PRODUCTS, INC.

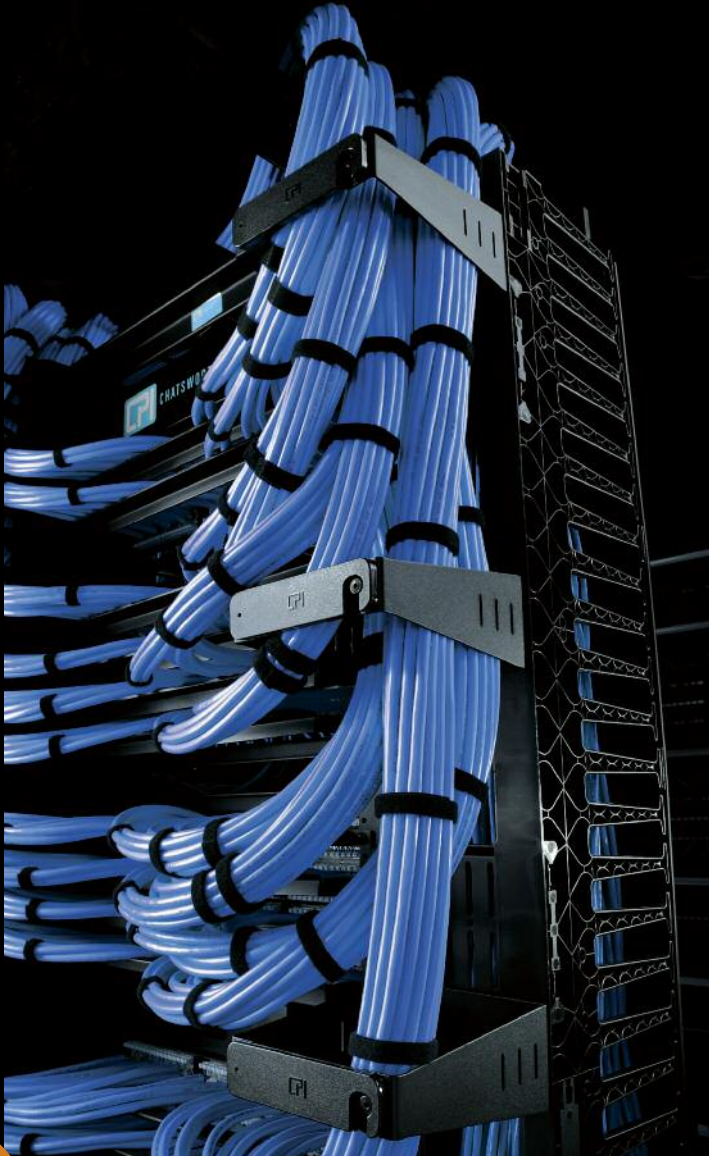
Optimize.  
Store.  
Secure.

## Your Network keeps getting faster. Trust CPI to help you stay one step ahead.

Proper cable management is integral to the performance and effectiveness of your network. Managing and maintaining cables and cords provides the critical support, reliability and flexibility needed to sustain and grow your network capabilities.

### **CPI Cable Management Solutions will help you ...**

- Streamline the management of your cables and cords to optimize the signal quality and network speed of your information exchange.
- Organize cables so that they can be easily traced from start to finish when performing moves, adds and changes, saving you valuable time and money.
- Fulfill high-density cabling requirements while maintaining proper bend radius and slack management for maximum network performance.



## Delivering the industry's most comprehensive cable management solutions.

Whether you are upgrading your current infrastructure or designing a new installation, trust the experts at Chatsworth Products, Inc. (CPI) to deliver the most comprehensive line of cable management products in the industry. CPI Cable Management sets the standard by providing:

### **Critical Cat 6a and Fiber Support**

- Designed to meet ANSI/TIA/EIA installation guidelines for Cat 6a cabling and fiber
- Proper bend radii ensures maximum quality of data transmission
- Meets high-density cabling requirements

### **Over 500 Standard Cable Management Products**

- Extensive product selection to satisfy various applications
- Provides vertical and horizontal cable management options in a variety of styles, widths, heights and depths
- Available to meet project scheduling needs

### **Cost Effective Solutions**

- Quality products that simplify network maintenance and costs
- Perform easy moves, adds and changes to connections, saving time and money
- Supports future growth and cabling demands

## Evolution™ Cable Management the next generation of innovative cabling.

To fulfill modern data center needs, CPI's Evolution™ Cable Management provides state-of-the-art solutions for managing high-density and Cat 6a cabling applications on open two and four-post rack systems. With enhanced interior features that maximize cable capacity and function, Evolution makes managing your cabling infrastructure easier than ever.

- Designed for high-density and Cat 6a cabling
- Market-leading size and strength
- Available in single-sided, double-sided, combination and horizontal models
- Patented Movable Mid-Sections maximize flexibility and function
- Innovative cable bundle management and fiber segregation capabilities
- Match the appearance of the popular TeraFrame® Family of Cabinets for a seamless and professional appearance



More sizes and larger interior spaces to hold more cables, Evolution is available in sizes up to 15"W (380 mm)



Three configurations – single-sided (g1), double-sided (g2) and combination (g3) – to meet specific cabling applications and site preferences



Large openings and sturdy cable guides manage larger cables with up to 48 patch cords per U to support high-density connections on large modular network switches



A wide range of accessories divide the interior space for enhanced cable management, create a separate interior pathway for fiber cables



Panels are also available to protect cables and to create a clean, professional look



**New!**

## Velocity™ Cable Management ... It's a snap!

CPI's new Velocity™ Cable Management provides an economical solution that is easy to install, easy to transport and offers more capacity and simplified cable management. Available in single and double-sided vertical and single-sided horizontal configurations, Velocity creates a complete pathway for premise cabling and patch cords, supplying comprehensive cable management solutions for open two and four-post rack systems.

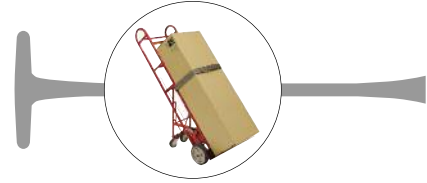
- Easy to assemble – Components snap together effortlessly for quick and efficient assembly
- Easy to ship and store – Compact packaging requires less storage space, makes cartons easy to handle and reduces packaging waste
- Increased cable capacity – Larger cross-section provides deeper interior space
- Simplified cable management – Integrated T-shaped cable guides organize cables
- Protect and hide cables – Attractive snap-on covers secure and shield cables
- Available in multiple heights – Choose from 6' (1.8 m), 7' (2.1 m) and 8' (2.4 m) options



Features quick and easy tool-less snap together design that takes approximately 3 - 5 minutes to unpack, assemble and install



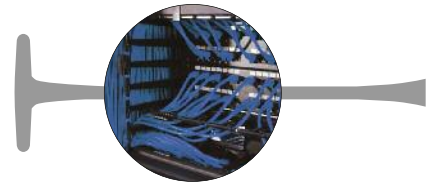
Compact packaging is 25% - 57% smaller than comparable managers, reduces waste, freight costs and uses less storage space during staging and clean up



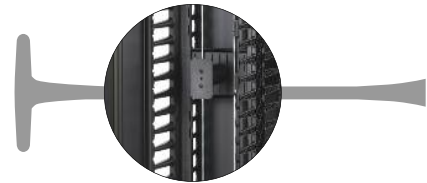
Single-sided vertical managers are deeper, delivering up to 1/3 more cable capacity than comparable managers



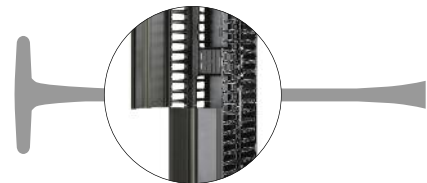
Includes T-shaped cable guides with more space between fingers and openings that align with each rack-mount unit on the rack, simplifying cable management



Openings in the back of the managers allow easy front-to-rear cabling



Snap-on covers provide a secure and protected environment for cables



## The Velocity™ Standard Pack

Save time with the Velocity™ Standard Pack, combining CPI's industry leading Standard Rack with the easy-to-use, cost-effective, Velocity Cable Management.



- One part number**
- One package**
- One complete solution**

Combining CPI's new Velocity Cable Management plus Standard Rack and Installation hardware in one convenient package.

# Additional Cable Management Options

## Cabling Sections

Vertical cable managers available in three styles that allow for easy cable management for a single rack or between two bayed racks.



>> **MCS Master Cabling Section** – single and double-sided managers with T-shaped cable guides, side cable openings that align with each rack-mount space (U) on the rack and hinged covers that secure and protect cables. Available with standard (MCS) and extended length (MCS-EFX) cable guides in three widths and several heights.

>> **VCS Vertical Cabling Section** – single and double-sided managers with spin-latch closures and large, edge-protected side cable openings ideal for large cable bundles. T-shaped cable guides and a cover can be added as separate accessories. Available in two widths and several heights.

>> **CCS Combination Cabling Section** – double-sided managers that feature an MCS-style front side and a VCS-style back side. Available with standard (CCS) and extended length (CCS-EFX) cable guides in three widths and several heights.

## Vertical Cable Managers

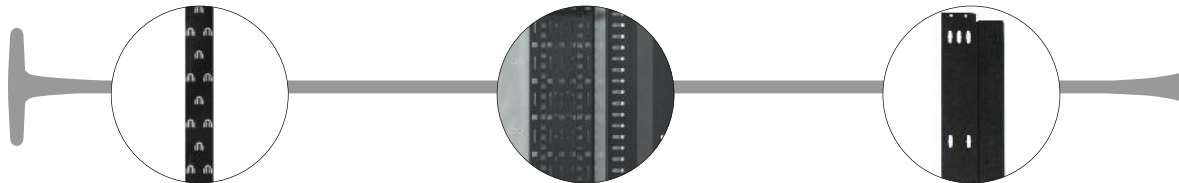
Designed to use with CPI Cabinet Systems and available in several styles to create vertical and front-to-rear cable pathways.



>> **Vertical Cable Manager** – single-sided managers with T-shaped cable guides, side cable openings that align with each rack-mount space (U) in the cabinet and covers that secure and protect cables

>> **Front-To-Back Cable Managers** – adjustable-depth U-shaped managers that create a front-to-rear cable pathway between front-facing and rear-facing Vertical Cable Managers

>> **Cable Ring Managers** – basic managers with plastic D-rings that organize cables



>> **Lashing Bars and Brackets** – basic managers with U-shaped attachment points for securing cables using Saf-T-Grip® Straps or tie wraps

>> **Furcation/Fiber Brackets** – basic managers that provide attachment points for pre-terminated fiber cables and various accessories that manage high-density harness cables

>> **PDU/Power Strip Brackets** – basic managers that have tool-less attachment points for CPI vertical PDUs and tie points for securing bundled power cords with Saf-T-Grip Straps or tie wraps

## Horizontal Cable Managers

Several styles of 19" EIA rack-mount horizontal managers that work with both CPI Rack or Cabinet Systems from simple bars and trays to rings and patented fingers.



>> **Universal Horizontal Manager** – single and double-sided rack-mount managers with T-shaped cable guides to organize patch cords and snap-on covers that secure and protect cables. Use with MCS, CCS or Vertical Cable Managers.

>> **Horizontal Wire Management Panels** – several styles of basic managers with D-rings to organize cables. Use with VCS or inside CPI Cabinet Systems

>> **Jumper Trays** – U-shaped managers that create a side-to-side cable pathway for patch cords

# Create a Cable Management Solution with CPI Rack Systems

1

## Step One : Choose your two or four-post Rack System



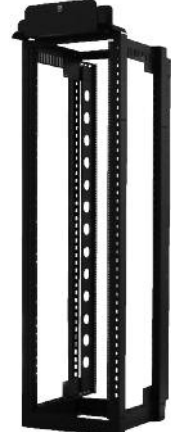
- >> Standard Rack
- >> Universal Rack
- >> Standard Rack 6"D (150 mm)



- >> Seismic Frame® Two-Post Rack (for Evolution™ and MCS-EFX only)



- >> QuadraRack™ 4-Post and Server Frame
- >> Adjustable Depth QuadraRack™/ServerRack



- >> Adjustable Rail QuadraRack™/ServerRack

2

## Step Two : Choose your cabling section

### >> Evolution Vertical Cable Manager

CPI's largest, most feature rich vertical cable manager. The stylish front door has a curved design and aluminum center feature to match CPI's TeraFrame® Family of Cabinets.

- Two-point latch with a single knob, opens to the right or left and can be removed when cabling
- Door attaches at the top and bottom and does not limit the amount of cable entering/exiting and rack-mount unit
- Large cable openings align with each rack-mount unit space
- Movable Mid-Sections on double-sided versions allow a 50/50, 60/40 or 40/60 split of interior space versions in several sizes.



**New!**

### >> Velocity Cable Manager

Offers an easy to install, easy to transport and economical solution with more cable capacity and simplified cable management.

- Snap-together plastic manager delivers unassembled in a compact package
- T-shaped cable guides with rounded edges organize cables by rack-mount unit and protect against snags
- Openings on the sides of the managers align with each rack-mount unit, simplifying cable management
- Openings on the back of the managers provide easy front-to-rear cabling
- Snap-on covers supply a secure and protected environment
- Available in single and double-sided versions in several sizes



**Patented**

### >> MCS Master Cabling Section

Provides patented plastic T-shaped cable management fingers and openings that align with each rack-mount unit on the rack

- Sturdy door/cover includes a handle and mechanical latch that keeps the door in the closed position
- T-shaped cable guides organize cables by rack-mount unit
- Edge-protected cable pass-through ports allow front-to-rear cabling
- Extended finger versions support high cable capacity
- Available in single and double-sided versions in several sizes



### >> VCS Vertical Cabling Section

An open cable trough with easy-to-use, flip-open latches for organizing large cable bundles.

- Open design supports large cable bundles
- Flip-open latches provide easy access to cables
- Edge protected openings prevent cable snags
- Available in single and double-sided versions in several sizes
- Double-sided versions have edge-protected pass-through ports
- Covers and snap-on Finger Snap Cable Guides are available as accessories



### >> CCS Combination Cabling Section

A double-sided alternative that combines an MCS-style front with a VCS-style rear.

- Plastic T-shaped cable guides on the front of the manager allow cables to exit into each rack-mount unit on the rack
- Hinged door swings open to the right or left, secures with top and bottom latches
- Open design on the rear of the manager supports large cable bundles
- Flip-open latches provide easy access to cables
- Edge protected openings prevent cable snags
- Available in several sizes
- Compatible with VCS accessories



# 3

## Step Three : Add horizontal cable managers



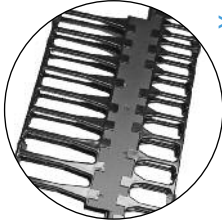
### >> Evolution Single-Sided Horizontal Cable Manager

Designed to work with Evolution Vertical Cable Managers and the TeraFrame Family of Cabinets. Use above and below patch panels and network switches to guide cables directly to each connection. Available in 1, 2 and 3U, 8.2"D (208 mm).



### >> Velocity Single-Sided Horizontal Cable Manager

Use with Velocity Vertical Cable Managers above and below patch panels and network switches to guide cables directly to each connection. Available in 1, 2 and 3U, 5.9"D (150 mm).



### >> Universal Single and Double-Sided Horizontal Cable Managers

Styled to match MCS or CCS. Use above and below patch panels to guide cables directly to the connection. Double-Sided available in 1, 2 and 3U, 12"D (300 mm). Single-Sided available in 1, 2 or 3U, 5"D (130 mm) or 6"D (150 mm).



### >> 19" Horizontal Wire Management Panel

An open alternative to the Universal Horizontal Cable Manager. Use with VCS Vertical Cabling Section above and below patch panels and switches. Available in 1 or 2U, 4"D (100 mm).



### >> Jumper Trays

Creates side-to-side pathways for patch cords. Available in 2U, 3.5"D (89 mm) or 6"D (150 mm).

# 4

## Step Four : Choose your accessories



### >> Cable Spools

Use inside vertical cabling sections to take up patch cord slack. Required when managing fiber.



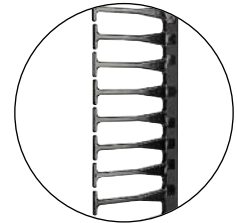
### >> Cable Lashing Bar Kit

Use in Evolution or Velocity vertical managers to easily anchor cable bundles and maximize cable fill capacity.



### >> Saf-T-Grip® Strap

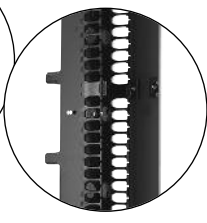
Loosely bundle and secure cables to prevent cable damage.



### >> Extended Fingers Bracket

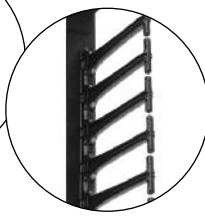
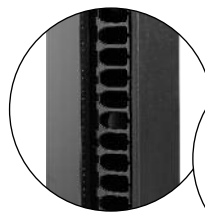
Use alongside network switches to guide cables into each rack-mount unit.

## Special Features : Consider these features when selecting cable managers



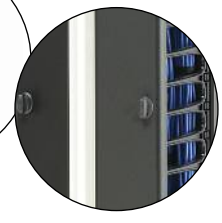
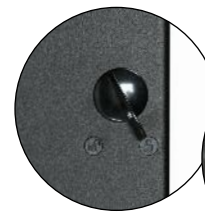
### >> Single or Double-Sided Cabling Section/Manager

Cabling sections/managers are available single or double-sided depending on the application. Single-Sided Cabling Sections/Managers provide a convenient cable run between equipment and racks. Double-Sided Cabling Sections support patch panels by keeping premise cables and patch cords separate.



### >> Cable Fingers

Cable management T-shaped fingers are available in standard and Extended Fingers -EFX capacity. The EFX versions extend 2-1/2" (64 mm) farther than standard fingers creating additional depth and a larger cable fill area. Evolution Cable Managers and Velocity Cable Management use a high-capacity finger similar to the EFX but with improved strength and rigidity.



### >> Hinged Latching Door

The Evolution, MCS and CCS doors hinge open to the right or left for easy access to cables and latch in the closed position to protect cables from damage. Velocity doors snap on. Accessory covers are also available for VCS.

# Create a Cable Management Solution with CPI Cabinet & Enclosure Systems

1

## Step One : Choose your Cabinet & Enclosure System



### >> CPI Cabinet Systems

- F-Series TeraFrame® Cabinet
- N-Series TeraFrame® Network Cabinet
- C-Series SlimFrame® Cabinet
- M-Series MegaFrame® Cabinet
- T-Series SteelFrame Cabinet

2

## Step Two : Choose your vertical cabling section by cabinet style

### MegaFrame®, SlimFrame® & SteelFrame Cabinets



#### >> Vertical Cable Manager

All CPI MegaFrame®, SlimFrame® and SteelFrame Cabinet Systems have integrated cable management space and include one pair of vertical cable managers with rings. Cable managers can be adjusted front-to-rear to align with equipment. Add more cable managers to create multiple cable pathways.



#### >> Enhanced Vertical Cable Manager for MegaFrame

Allows cables to be organized by Rack-mount unit making it easier to trace during moves, adds and changes. Available in two sizes for large and extra-large cable capacities. The narrow version can be added to any MegaFrame and the wide version is used in any 23" wide MegaFrame that has been converted to 19" width using the 23"-19" Rail Adapter Kit.

### F-Series TeraFrame™ Cabinet System



#### >> Vertical Cable Manager for F-Series TeraFrame

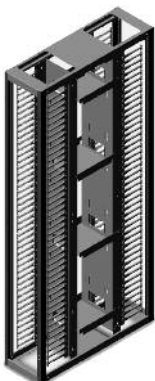
Attaches to the equipment mounting or frame rails and adjusts with equipment along the side of the cabinet. Both long and short T-shaped fingers are available.



#### >> Vertical Cable Ring Manager

Attaches to the side of the equipment mounting rails creating a vertical pathway for cables. Available in small or large rings.

### SteelFrame Cabinet



#### >> External Cable Manager

Add to the side of a SteelFrame Cabinet to create vertical and front-to-rear cable pathways. Vertical cable openings align with rack-mount units in the cabinet. The External Cable Manager includes solid locking front and rear doors and has a solid bottom with brush-sealed cable access holes. Available 6"W (150 mm) or 12"W (300 mm).

### N-Series TeraFrame™ Cabinet System



#### >> Fiber Trunk Cable Manager

The Fiber Trunk Cable Manager attaches to the N-Series TeraFrame Network Cabinet and supports and protects Corning Cable Systems Plug & Play Universal Systems trunk cables as the cables transition from vertical to horizontal orientation to make connections inside the cabinet.



#### >> Cable Management Fingers Kit

Provides vertical cable management at one corner of the cabinet frame. Includes a set of T-shaped cable guides and five cable spools

## 3 Step Three : Add horizontal cable managers



### >> Evolution Single-Sided Horizontal Cable Manager

Styled to match the TeraFrame Family of Cabinets. Use above and below patch panels and network switches to guide cables directly to each connection. Available in 1, 2 and 3U, 8.2"D (208 mm).



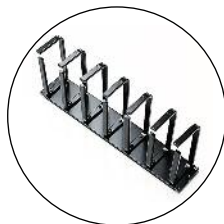
### >> Universal Single and Double-Sided Horizontal Cable Managers

Use above and below patch panels to guide cables directly to the connection. Available in 1, 2 and 3U, 12"D (300 mm). Single-Sided available in 1, 2 or 3U, 5"D (130 mm) or 6"D (150 mm).



### >> Velocity Single-Sided Horizontal Cable Manager

Use above and below patch and network switches to guide cables directly to each connection. Available in 1, 2 and 3U, 5.9"D (150 mm).



### >> Large Horizontal Ring Panel

Use above modular network switches to guide cables into vertical module cards. Available in 2U, 6"D (150 mm).



### >> Rack Cabling Manager

Small horizontal manager, ideal for supporting one patch panels. Available in 1 or 2U, 2"D (50 mm).



### >> 19" Horizontal Wire Management Panel

An open alternative to the Universal Horizontal Cable Manager. Use above and below patch panels and switches. Available in 1 or 2U, 4"D (100 mm).



### >> Jumper Trays

Creates side-to-side pathways for patch cords. Available in 2U, 3.5"D (89 mm) or 6"D (150 mm).

## 4 Step Four : Choose your accessories



### >> Swivel Cable Spool

Manages optical fiber cable slack at the front of the N-Series TeraFrame Network Cabinet. Part of the CPI Fiber Management solution for Corning Cable Systems LANscape® Pretium™ Zero-U System. Used with the Universal Accessory Rail to organize high-density MTP-to-LC duplex harness cables.



### >> 23"-19" Rail Adapter Kit

Allows 19" EIA wide equipment to be placed within a 23"W MegaFrame Cabinet. Use with Wide Enhanced Vertical Cable Manager to create a 19"W EIA high-density cable solution in the MegaFrame Cabinet System.



### >> Front-to-Back Cable Manager

Provide a front-to-back pathway for cables transitioning between switches and computers. Use between two Enhanced Vertical Cable Managers in MegaFrame Cabinets or Vertical Cable Managers in TeraFrame Cabinets. Telescopes to match the distance between front and rear managers.



### >> Rack-Mount Cable Shelf

Use inside 19" EIA cabinets to provide front-to-rear pass-through and slack management for fiber patch cords. The shelf has brushed openings for cables along the front panel. Uses only 1U. Attaches to rails set 20-44"D (560 mm to 1020 mm).



### >> Horizontal Cable Tray

Use inside MegaFrame to provide a side-to-side pathway for cables. Attaches to the cabinet frame and does not use Rack-mount unit. Sold as a kit, two each included.



### >> Saf-T-Grip Straps

Bundle and secure cables to prevent cable damage.

### Fast Fact


CPI's cable management accessories are available for all cabinet sizes and can be combined with the base cabinet into a custom-configured, factory assembled solution that fits your exact needs.

The following charts provide part numbers for the systems you've seen presented in this brochure; however, additional part numbers (sizes) and configured systems may be available.




For assistance selecting a cable management solution, check out the Product Configurator at [www.chatsworth.com/configurator](http://www.chatsworth.com/configurator). If you require personal assistance, contact Technical Support at 800-834-4969.

**Build Your Own: Rack Systems (as shown on Pages 6 & 7)**

Velocity Vertical Cable Managers 	
Part Number	Description H x W Height - ft (m)
<b>For 7'H (2.1 m), 45U Racks</b>	
13901-703	Velocity Single-Sided, 80.5 x 3.6 x 9.7 (2045 x 91 x 246)
13902-703	Velocity Single-Sided, 80.5 x 6 x 9.8 (2045 x 152 x 249)
13904-703	Velocity Single-Sided, 80.5 x 10 x 10.3 (2045 x 254 x 262)
13905-703	Velocity Single-Sided, 80.5 x 12 x 10.4 (2045 x 305 x 264)
13911-703	Velocity Double-Sided, 80.5 x 3.6 x 16.4 (2045 x 91 x 417)
13912-703	Velocity Double-Sided, 80.5 x 6 x 16.6 (2045 x 152 x 422)
13914-703	Velocity Double-Sided, 80.5 x 10 x 17.5 (2045 x 254 x 445)
13915-703	Velocity Double-Sided, 80.5 x 12 x 17.8 (2045 x 305 x 446)
<b>Velocity Horizontal Cable Managers</b>	
Part Number	Description H x W x D Height - ft (m)
13930-701	Velocity Single-Sided, 1U x 19 x 5.9 (150)
13930-702	Velocity Single-Sided, 2U x 19 x 5.9 (150)
13930-703	Velocity Single-Sided, 3U x 19 x 5.9 (150)

**Build Your Own: Rack Systems (as shown on Pages 6 & 7)**

Rack Systems	
Part Number	Description H x W Height - ft (m)
55053-703	3" Deep Standard Rack, 7 (2.1) x 19", 45U
66353-703	6" Deep Standard Rack, 7 (2.1) x 19", 45U
66383-703	6" Deep Standard Rack, 7 (2.1) x 23", 45U
48353-703	Universal Rack, 7 (2.1) x 19", 45U
48383-703	Universal Rack, 7 (2.1) x 3", 45U
13854-703	Seismic Frame Two-Post Rack, 7 (2.1) x 19", 44U
QuadraRack™	
Part Number	Description H x W x D Height - ft (m), Depth - in (mm)
50120-703	QuadraRack 4-Post Frame 7 (2.1) x 19 x 29 (740), 45U
15217-703	Adjustable QuadraRack 7 (2.1) x 19 x 29.5 to 35.4 (750-900)
15254-703	Adjustable Rail QuadraRack 7 (2.1) x 19 x 35.4 (90)

Velocity Standard Pack 	
Part Number	Description H x W x D Height - ft (m)
<b>Rack, Cable Management &amp; Hardware Package</b>	
57011-703	(1) Standard Rack, 7 (2.1) x 19", 45U (1) Velocity Single-Sided, 80.5 x 3.6 x 9.7 (2045 x 91 x 246) (1) Rack Installation Kit for concrete floor, 1/2" hardware
57012-703	(1) Standard Rack, 7 (2.1) x 19", 45U (1) Velocity Double-Sided, 80.5 x 3.6 x 16.4 (2045 x 91 x 417) (1) Rack Installation Kit for concrete floor, 1/2" hardware, Zinc
57013-703	(1) Standard Rack, 7 (2.1) x 19", 45U (1) Velocity Single-Sided, 80.5 x 6 x 9.8 (2045 x 152 x 249) (1) Rack Installation Kit for concrete floor, 1/2" hardware, Zinc
57014-703	(1) Standard Rack, 7 (2.1) x 19", 45U (1) Velocity Double-Sided, 80.5 x 6 x 16.6 (2045 x 152 x 422) (1) Rack Installation Kit for concrete floor, 1/2" hardware, Zinc

Evolution™ Vertical Cable Management	
Part Number	Description 7'H (2.1 m) W x D - in (mm)
35511-703	Evolution g1 Single-Sided, 6 x 13.2 (150 x 335)
35512-703	Evolution g1 Single-Sided, 8 x 13.2 (200 x 335)
35513-703	Evolution g1 Single-Sided, 10 x 13.2 (250 x 335)
35514-703	Evolution g1 Single-Sided, 12 x 13.2 (300 x 335)
35515-703	Evolution g1 Single-Sided, 15 x 13.2 (380 x 335)
35521-703	Evolution g2 Double-Sided, 6 x 24.5 (150 x 622)
35522-703	Evolution g2 Double-Sided, 8 x 24.5 (200 x 622)
35523-703	Evolution g2 Double-Sided, 10 x 24.5 (250 x 622)
35524-703	Evolution g2 Double-Sided, 12 x 24.5 (300 x 622)
35525-703	Evolution g2 Double-Sided, 15 x 24.5 (380 x 622)
35571-703	Evolution g3 Combination, 6 x 20.2 (150 x 513)
35572-703	Evolution g3 Combination, 8 x 20.2 (200 x 513)
35573-703	Evolution g3 Combination, 10 x 20.2 (250 x 513)
35574-703	Evolution g3 Combination, 12 x 20.2 (300 x 513)
35575-703	Evolution g3 Combination, 15 x 20.2 (380 x 513)
Evolution™ Single-Sided Horizontal Cable Manager	
35441-701	Evolution Single-Sided, 1U x 19 x 8.2 (208)
35441-702	Evolution Single-Sided, 2U x 19 x 8.2 (208)
35441-703	Evolution Single-Sided, 3U x 19 x 8.2 (208)

MCS Master Cabling Section	
Part Number	Description H x W x D Height - ft (m), Depth - in (mm)
30091-703	MCS, Single-Sided, 7 x 4.4 x 8.08 (2.1 x 112 x 205)
30092-703	MCS, Single-Sided, 7 x 6 x 8.08 (2.1 x 150 x 205)
30093-703	MCS, Single-Sided, 7 x 10 x 8.08 (2.1 x 250 x 205)
30094-703	MCS, Double-Sided, 7 x 4.4 x 16.15 (2.1 x 112 x 410)
30095-703	MCS, Double-Sided, 7 x 6 x 16.15 (2.1 x 150 x 410)
30096-703	MCS, Double-Sided, 7 x 10 x 16.15 (2.1 x 250 x 410)
MCS-EFX Master Cabling Section with Extended Fingers	
40092-703	MCS-EFX, Single-Sided, 7 x 6 x 10.62 (2.1 x 150 x 269)
40093-703	MCS-EFX, Single-Sided, 7 x 10 x 10.62 (2.1 x 250 x 269)
40094-703	MCS-EFX, Single-Sided, 7 x 12 x 10.62 (2.1 x 300 x 269)
40095-703	MCS-EFX, Double-Sided, 7 x 6 x 21.23 (2.1 x 150 x 539)
40096-703	MCS-EFX, Double-Sided, 7 x 10 x 21.23 (2.1 x 250 x 539)
40097-703	MCS-EFX, Double-Sided, 7 x 12 x 21.23 (2.1 x 300 x 539)
VCS Vertical Cabling Section	
11730-703	VCS, Single-Sided, 7 x 3.65 x 6.38 (2.1 x 92 x 162)
11734-703	VCS, Single-Sided, 7 x 6 x 6.38 (2.1 x 150 x 162)
12096-703	VCS, Double-Sided, 7 x 3.65 x 12.75 (2.1 x 92 x 323)
11729-703	VCS, Double-Sided, 7 x 6 x 12.75 (2.1 x 150 x 323)

Build Your Own: Rack Systems (as shown on Pages 6 & 7)

CCS Combination Cabling Section	
Part Number	Description H x W x D Height - ft (m), Depth - in (mm)
30161-703	CCS, Double-Sided for 3"D Racks, 7 x 3.65 x 12.24 (2.1 x 92 x 310)
30162-703	CCS, Double-Sided for 3"D Racks, 7 x 6 x 12.24 (2.1 x 150 x 310)
30163-703	CCS, Double-Sided for 3"D Racks, 7 x 10 x 12.24 (2.1 x 250 x 310)
30164-703	CCS, Double-Sided for 6"D Racks, 7 x 3.65 x 14.61 (2.1 x 92 x 371)
30165-703	CCS, Double-Sided for 6"D Racks, 7 x 6 x 14.61 (2.1 x 150 x 371)
30166-703	CCS, Double-Sided for 6"D Racks, 7 x 10 x 14.61 (2.1 x 250 x 371)
CCS-EFX Combination Cabling Section with Extended Fingers	
40098-703	CCS-EFX, Double-Sided for 3"D Racks, 7 x 6 x 14.94 (2.1 x 150 x 379)
40099-703	CCS-EFX, Double-Sided for 3"D Racks, 7 x 10 x 14.94 (2.1 x 250 x 379)
40100-703	CCS-EFX, Double-Sided for 3"D Racks, 7 x 12 x 14.94 (2.1 x 300 x 379)
Universal Horizontal Cable Manager, Double-Sided	
30529-719	UHCM, Double-Sided, 1U x 19 x 11.73 (297)
30530-719	UHCM, Double-Sided, 2U x 19 x 11.73 (297)
30531-719	UHCM, Double-Sided, 3U x 19 x 11.73 (297)
Universal Horizontal Cable Manager, Single-Sided	
30139-719	UHCM, Single-Sided, 1U x 19 x 4.96 (126)
30130-719	UHCM, Single-Sided, 2U x 19 x 5.14 (130)
30131-719	UHCM, Single-Sided, 3U x 19 x 5.1D (130)
30339-719	UHCM, Single-Sided, Deep, 1U x 19 x 6.26 (159)
30330-719	UHCM, Single-Sided, Deep, 2U x 19 x 6.44 (163)
30331-719	UHCM, Single-Sided, Deep, 3U x 19 x 6.44 (163)
Jumper Trays	
12183-719	Upper Jumper Tray, 2U x 19 x 3.5 (89)
13183-719	Upper Jumper Tray, 2U x 19 x 6 (150)
12185-719	Lower Tray, 2U x 19 x 3.5 (89)
12187-719	Lower Tray, 3U x 19 x 3.5 (89)
Extended Fingers Bracket	
12891-703	Bracket, 7U
Cable Spools	
15008-001	Spools for Evolution, Pack of 4
13935-701	Spools for Velocity, Pack of 4
12766-707	Spools, for Double-Sided MCS, CCS, VCS, Pack of 7
Saf-T-Grip®	
02006-201	Saf-T-Grip Strap, Pack of 25, 6"L, 2" (150) (50) diameter cable bundle
02009-201	Saf-T-Grip Strap, Pack of 25, 9"L, 3" (230) (80) diameter cable bundle
02012-201	Saf-T-Grip Strap, Pack of 25, 12"L, 4" (300) (100) diameter cable bundle

Build Your Own: Cabinet & Enclosure Systems (as shown on Pages 8 & 9)

F-Series TeraFrame™ Cabinet System	
Part Number	Description H x W x D Height - ft (m), Depth - in (mm)
FF1J-212A-C12	7 x 19 x 43.2 (1097), 600 mm, 45U, 2500 lb, Solid Top, Side Panels, Perforated Doors
FF2J-212A-C22	7 x 19 x 43.2 (1097), 700 mm, 45U, 2000 lb, Solid Top, Side Panels, Perforated Doors
FF3J-212A-C22	7 x 19 x 43.2 (1097), 800 mm, 45U, 2000 lb, Solid Top, Side Panels, Perforated Doors
N-Series TeraFrame™ Cabinet System (2000 lb Load Rating)	
NFOK-113C-C42	800 mm, 45U, 19 x 44.2 (1122), Solid Top, Side Panels, Perforated Doors
NF1K-113C-C42	800 mm, 45U, 19 x 44.2 (1122), Exhaust Duct, Solid Top, Side Panels, Perforated Doors
M-Series MegaFrame® Cabinet System (2000 lb Load Rating)	
M1030-742	7 x 19 x 30 (760), 45U, Solid Top and Sides, Perforated Doors
M1032-702	7 x 19 x 30 (760), 45U, No Top, Sides or Doors
M2030-742	7 x 23 x 30 (760), 45U, Solid Top and Sides, Perforated Doors
M1050-742	7 x 19 x 36 (910), 45U, Solid Top and Sides, Perforated Doors
M2050-742	7 x 23 x 36 (910), 45U, Solid Top and Sides, Perforated Doors
M1040-742	7 x 19 x 39 (990), 45U, Solid Top and Sides, Perforated Doors
M2040-742	7 x 23 x 39 (990), 45U, Solid Top and Sides, Perforated Doors

Build Your Own: Cabinet & Enclosure Systems (as shown on Pages 8 & 9)

C-Series Slim Frame® Cabinet System (2000 lb Load Rating)	
Part Number	Description H x W x D Height - ft (m), Depth - in (mm)
C1030-742	7 x 19 x 30 (760), 43U, Solid Top and Sides, Perforated Doors
C1050-742	7 x 19 x 36 (910), 43U, Solid Top and Sides, Perforated Doors
C1052-702	7 x 19 x 36 (910), 43U, No Top, Sides or Doors
T-Series SteelFrame Cabinet System (2000 lb Load Rating)	
T1030-742	7 x 19 x 30 (760), 45U, Solid Top and Sides, Perforated Doors
T2030-742	7 x 19 x 30 (760), 45U, Solid Top and Sides, Perforated Doors
T2032-702	7 x 19 x 30 (760), 45U, No Top, Sides or Doors
T1050-742	7 x 19 x 36 (910), 45U, Solid Top and Sides, Perforated Doors
T2050-742	7 x 19 x 36 (910), 45U, Solid Top and Sides, Perforated Doors
Vertical Cable Manager	
34421-C01	Vertical Cable Manager, 45U, 1.9 x 10.5 (48 x 267), Short Finger for 600 mm F-Series
35090-C05	Vertical Cable Manager, 45U, 3.1 x 11.6 (79 x 395), Short Finger, for 700 mm F-Series
35102-C05	Vertical Cable Manager, 45U, 3.1 x 14.1 (79 x 358), Long Finger, for 700 mm F-Series
35095-C05	Vertical Cable Manager, 45U, 5.0 x 11.6 (127 x 295), Short Finger, for 800 mm F-Series
35103-C05	Vertical Cable Manager, 45U, 5.0 x 14.1 (127 x 358), Long Finger, for 800 mm F-Series
12465-707	Vertical Cable Manager, 7'H (1830), for M-Series
11809-700	Vertical Cable Manager, 7'H (210300), for C-Series
16144-750	External Cable Manager, 7 x 6 x 36 (2.1 x 150 x 910), for SteelFrame
16145-750	External Cable Manager, 7 x 12 x 36 (2.1 x 300 x 910), for SteelFrame
16144-740	External Cable Manager, 7 x 6 x 39 (2.1 x 150 x 990), for SteelFrame
16145-740	External Cable Manager, 7 x 12 x 39 (2.1 x 300 x 990), for SteelFrame
Wide Enhanced Vertical Cable Manager	
13170-700	7 x 4.75 x 8.77, for 23"W x 45U MegaFrame
10587-701	Rail Adapter Kit, 23" to 19"W, converts 23"W MegaFrame into a 19"W MegaFrame
Narrow Enhanced Vertical Cable Manager	
13171-700	7 x 3.5 x 5.23, for MegaFrame M-Series Cabinets (2.1 x 88 x 132)
CPI Fiber Management	
34719-C05	Fiber Trunk Cable Manager, for 45U N-Series TeraFrame Cabinet
34707-C05	Vertical Furcation Bracket, for 45U N-Series TeraFrame Cabinet
34701-C05	Universal Accessory Rail, for 45U N-Series TeraFrame Cabinet
34716-C02	Swivel Cable Spool, Kit of 6
19" Horizontal Wire Management Panel	
13075-719	2U x 19"W x 4"D (100 mm)
Rack Cabling Manager	
11752-719	Small Rings, 1U x 19"W x 1.3"D (33 mm)
11753-719	Medium Rings, 2U x 19"W x 1.6"D (41 mm)
Horizontal Cable Tray	
10365-719	For 19"W MegaFrame Cabinets, 2"H x 6"W (50 mm x 150 mm), pair
10365-723	For 23"W MegaFrame Cabinets, 2"H x 6"W (50 mm x 150 mm), pair
Rack-Mount Cable Shelf	
13517-701	1U x 19"W, 22" to 40"D (560 mm to 1020 mm)
Large Horizontal Ring Panel	
11564-719	2U x 19"W x 6"D (150 mm)
Front-To-Back Cable Manager	
35106-C01	For 700 mm TeraFrame, 2.5"W x 2.4"D, extends 10"-17", for rail sets 26"-33" apart
35106-C02	For 700 mm TeraFrame, 2.5"W x 2.4"D, extends 6"-10", for rail sets 22"-26" apart
35108-C02	For 800 mm TeraFrame, 4.0"W x 4.0"D, extends 6"-10", for rail sets 22"-26" apart
35108-C01	For 800 mm TeraFrame, 4.0"W x 4.0"D, extends 10"-17", for rail sets 26"-23" apart
13169-701	2.38"H x 1.74"W, For Use With Narrow Enhanced Vertical Cable Manager
13168-701	2.38"H x 3.77"W, For Use With Wide Enhanced Vertical Cable Manager

**Fast Fact**

**Technical Support and Product Customization**

New products often begin as customer requests. CPI can customize a solution based on your needs and requirements. Simply call CPI Technical Support at 800-834-4969 or use our online Product Configurator tool at [www.chatsworth.com/configurator](http://www.chatsworth.com/configurator).

## CPI Locations

### USA

Corporate Office  
Westlake Village, CA  
818-735-6100

Chatsworth, CA Operations  
818-882-8595

Georgetown, TX Operations  
512-863-7800

New Bern, NC Operations  
252-514-2779

### Caribbean & Latin America

Mexico City, Mexico  
+52 55 5203-7525  
Toll Free 01-800-201-7592

### Europe

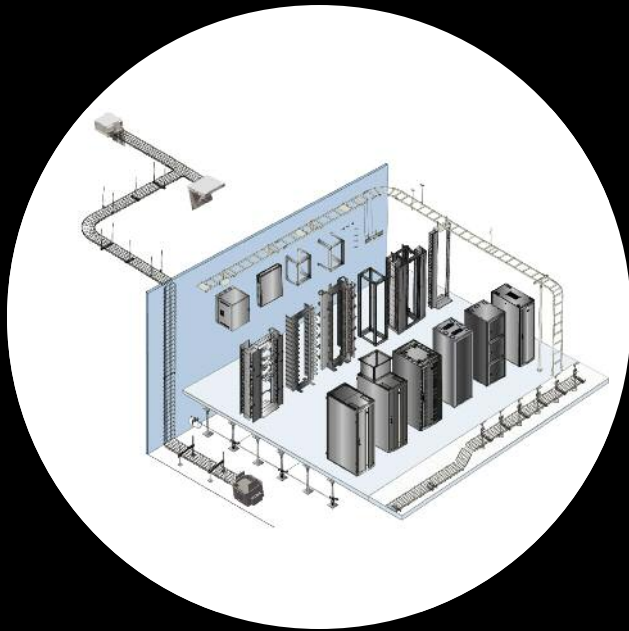
Buckinghamshire, England  
+44-1628-524-834

### Asia Pacific

Pudong, Shanghai, China  
+86-21-6880-0266

### Middle East & Africa

Dubai, United Arab Emirates  
+971-4-2602125



## The CPI Total Solution Includes:

- Equipment Support
- Cable Management
- Cable Pathways
- Grounding & Bonding
- Security & Monitoring
- Thermal Management
- Power Distribution
- Seismic Bracing

Find more information about CPI Cable Management at  
[www.chatsworth.com/cablemanagement](http://www.chatsworth.com/cablemanagement)

800-834-4969 (U.S. & Canada)  
or [techsupport@chatsworth.com](mailto:techsupport@chatsworth.com)



**CHATSWORTH  
PRODUCTS, INC.**