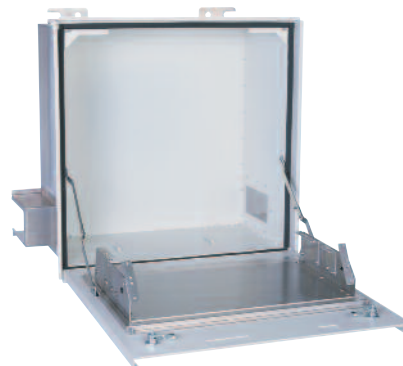


Product Cut Sheet

CEILING MOUNTED WIRELESS ENCLOSURES

Ceiling-Mounted Wireless Access Point Enclosures

Ceiling Enclosures create a permanent location for various wireless access points or bridges within drop ceilings. Equipment is supported on the access door. Most access doors are pre-punched with openings for antennas. Ceiling Enclosures include support brackets for use with 2' ceiling "grids". AAT-CAP features interchangeable door-mounted faceplates with mounting brackets for equipment. Universal Faceplate accepts access points up to 10"W x 8"D x 2"H (250 mm x 200 mm x 50 mm) with antennae(s) up to 10.5" (267 mm) apart. Enclosure is finished in white.



83001-200

Ceiling Enclosure For Patch Panels

Secure a consolidation point using 19" patch panels or other panel-mount termination hardware.

- A1222-PP provides a total of 5U with (3) brackets sized 2U - 1U - 2U. Brackets mount on the door
- 13812-002 provides larger cable openings for Cat 6a; one 3-1/4" x 14-3/4" (82.6 mm x 374.7 mm) and one 6-1/4" x 6-7/8" (158.8 mm x 174.6 mm)
- A1024-PP provides a total of 5U with (3) brackets sized 2U - 1U - 2U. Brackets mount on the door
- A1224-PP provides a total of 10U with (3) brackets sized 4U - 2U - 4U. Brackets may be mounted on the door or the back of the enclosure
- Order #12-24 equipment mounting screws separately

Part Number	Description H x W x D in (mm)	Shipping Weight lb (kg)
83000-200	Wireless Access Point Enclosure with Universal Faceplate, 5 x 14.4 x 12 (127 x 368 x 305)	9 (4.1)
83001-200	2' x 2' Enclosure for Patch Panels, 5U, 12 x 24 x 24 (305 x 610 x 610)	38 (17.2)

800-834-4969 in U.S. & Canada • www.chatsworth.com



CHATSWORTH PRODUCTS, INC.

©2010 Chatsworth Products, Inc. All rights reserved. CPI, CPI Passive Cooling, Saf-T-Grip, Seismic Frame, SlimFrame, MegaFrame and TeraFrame are federally registered trademarks of Chatsworth Products, Inc. Cube-iT Plus, Evolution, OnTrac, QuadraRack and Simply Efficient are trademarks of Chatsworth Products, Inc. All other trademarks belong to their respective companies. 03/10