



CPI CenterPoint™ User's Manual

Version 1.0
8/2009



**CHATSWORTH
PRODUCTS, INC.**

800-834-4969

techsupport@chatsworth.com

www.chatsworth.com

©2009 Chatsworth Products, Inc. All rights reserved. CPI, CPI Passive Cooling, Saf-T-Grip, Seismic Frame, Slim-Frame and MegaFrame are federally registered trademarks of Chatsworth Products, Inc. Cube-iT Plus, Evolution, OnTrac, QuadraRack, Simply Efficient and TeraFrame are trademarks of Chatsworth Products, Inc.

All other trademarks belong to their respective companies. MKT-60020-458 09/09

Copyright Notice

Chatsworth Products, Inc.
9353 Winnetka Avenue
Chatsworth, CA 91311
800-834-4969

CenterPoint™ User's Manual

©2009 Chatsworth Products, Inc. All rights reserved.

The information contained in this guide is subject to change without notice. Chatsworth Products, Inc. shall not be liable for technical or editorial errors or omissions contained herein; nor is it liable for incidental or consequential damages resulting from the furnishing, performance, or use of this material.

Product names mentioned herein may be trademarks and/or registered trademarks of their respective companies. PC/AT, PS/2, RS/6000 and are registered trademarks of International Business Machines Corporation. Sun Microsystems and Sun SPARC are registered trademarks of Sun Microsystems, Inc.

Warranty

Chatsworth Products, Inc. guarantees manufactured products and each part or component thereof against all defects in material and/or workmanship. Chatsworth Products, Inc. agrees to remedy any manufacturing defect either through replacement or repair at no charge provided that the defective unit is returned, transportation prepaid, to the Chatsworth Products, Inc. factory. The warranty extends for a period of one year from the date of installation or initial use, provided that this period shall not exceed 18 months from the original date of shipment from the factory.

Any product that has been repaired or replaced shall be similarly warranted on its repair or replacement for the remaining product warranty period or 90 days from the date of repair or replacement, whichever expires last.

This warranty does not extend to products that have been subjected to neglect, accident or improper use, nor to units that have been altered by non- Chatsworth Products, Inc. personnel.

No warranties other than those set forth in this section are given or implied with respect to the products furnished. Chatsworth Products, Inc. shall, in no event, be liable for consequential damages, for loss, damage or expense directly or indirectly arising from the use of the products, for any inability to use materials or from any other cause.

Table Of Contents

Introduction	4
Using This Manual.....	5
Safety Warnings and Cautions	6
Product Features.....	7
Rack Mount Instructions.....	8
Cable Connections.....	9
On-Screen Controls.....	10
Operation	14
TFT Setup and Controls	15
Factory Default Settings	16
Installing Updates.....	17
Fuse Replacement and Maintenance	20
Regulatory Information	21
Specifications	22
Special Instructions for Connecting to a Sun Server.....	23

INTRODUCTION

Product Overview

CenterPoint™ by Chatsworth Products, Inc. (CPI) are Keyboard, Video and Mouse (KVM) solutions that integrate 16 or 8 port switches with a 15" TFT display, keyboard and mouse control in a single 1 RMU (1.75" high) rack-mount unit. CenterPoint is a one-stop solution to managing your rack-mounted servers. One control unit eliminates wasted rack space and provides you with control of up to 16 or more servers in a single, compact, design.

Features

Fill your rack with processing power! As server density increases, giving up valuable rack space for management consoles becomes a critical issue. CenterPoint can reduce the space requirements for your KVM switch, monitor, keyboard and mouse to only 1RMU.

- 16 or 8 port keyboard, video and mouse (KVM) switch
- One and two-user models
- Access to any of the 8 or 16 ports
- Integrated 15" flat panel display
- 1 RMU rack mount chassis - 1.75" high
- On-screen interface software for server selection
- Full 83 key, low-profile, notebook keyboard
- Glidepoint touch pad
- Unique high density cable design reduces cable clutter and eases installation
- Windows 98 and higher, Linux and Solaris compatible
- Includes all rack mounting hardware
- External video, keyboard and mouse ports for remote monitoring and control
- Multiple on-board processors monitor each port to assure availability

USING THIS MANUAL

This manual covers the CenterPoint 8 port and 16 port, one-user and two-user KVM switches. There are four models:

- P/N 35910-811 is a one user model with an 8 port KVM switch.
- P/N 35910-161 is a one user model with a 16 port KVM switch.
- P/N 35910-832 is a two user model with an 8 port KVM switch.
- P/N 35910-162 is a two user model with a 16 port KVM switch.

Generally, all of this information in this user manual pertains to all products. However, the number of accessible ports (16 or 8) controls what will be seen on the On-Screen display. For example, in the section on On-Screen controls some of the sample screens show multiple pages to accommodate the 16 ports found on 16 port CenterPoints. If you are using the CenterPoints with 8-port, only one page is required to display all of the available port options. Therefore, you will not see previous and next on those screens and only a single screen will be displayed.

Additionally, two-user models have some additional menu options.

SAFETY WARNINGS AND CAUTIONS



WARNING! DO NOT open the top cover, Hazardous Voltages are present!



CAUTION! Account for heat when mounting CenterPoint!



CAUTION! CenterPoint must be mounted to ensure the integrity of the rack!



CAUTION! Use caution when lowering the monitor! Fingers may be pinched.



CAUTION! Do not lean on drawer when pulled out!

DO NOT OPEN THE CENTERPOINT CASE. There are no user serviceable parts inside and opening or removing covers may expose you to dangerous shock hazards or other risks. Refer all servicing to qualified service personnel.

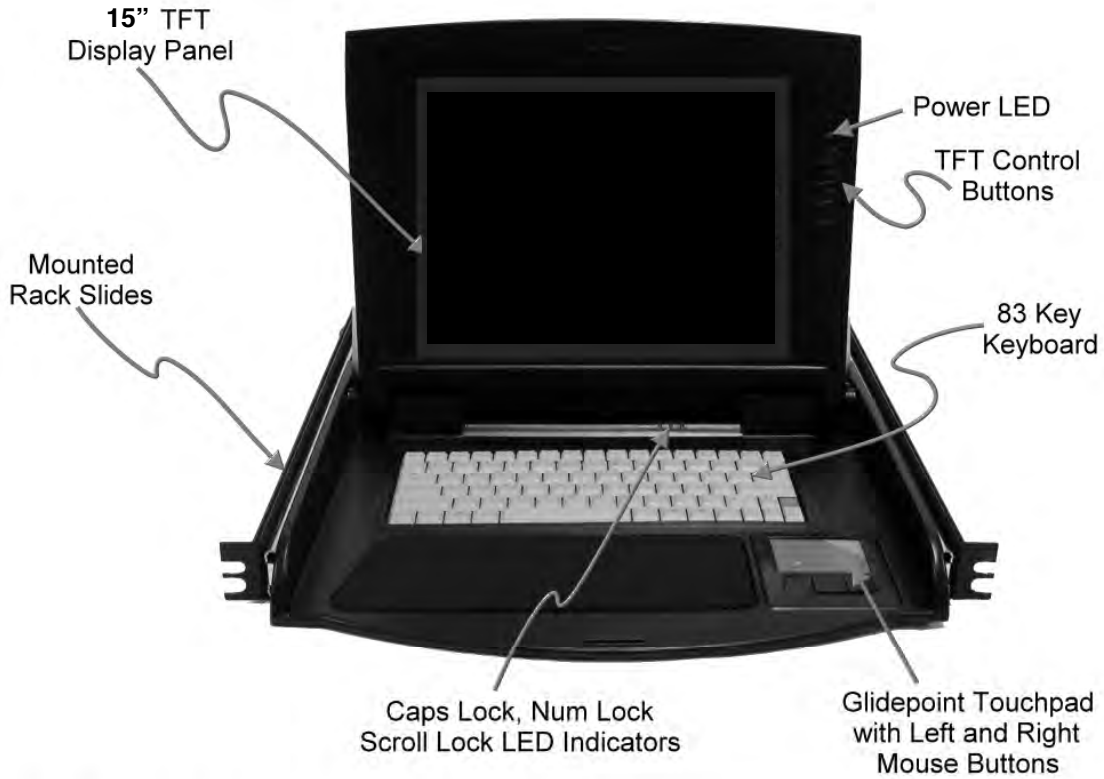
- Do not spill any liquids into the cabinet or use your monitor near water.
- Do not insert objects of any kind into the cabinet slots, as they may touch dangerous voltage points, which can be harmful or fatal or may cause electric shock, fire or equipment failure.
- Do not place any heavy objects on the power cord. Damage to the cord may cause shock or fire.
- Do not place this product on a sloping or unstable cart, stand or table, as the monitor may fall, causing serious damage to the monitor.

When operating CenterPoint with AC 220-240V power supply, use a power supply cord that matches the power supply voltage of the AC power outlet being used. The power supply cord you use must have been approved by and comply with the safety standards of your country.

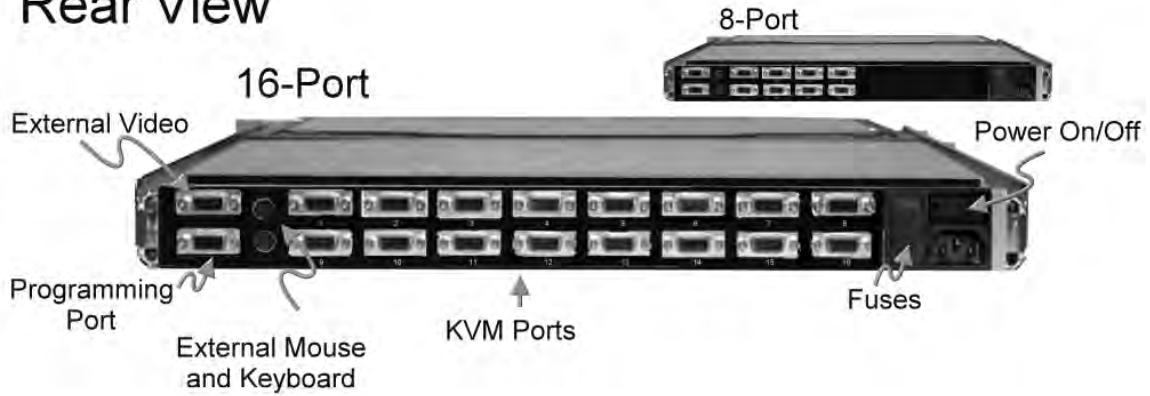
The inside of the fluorescent tubes located within the LCD monitor contains mercury. Please follow the bylaws or rules of your municipality to dispose of the tube properly.

PRODUCT FEATURES

Front View



Rear View



RACK MOUNT INSTRUCTIONS



Warning!

To reduce the risk of personal injury or damage to the equipment, be sure that the following items are completed **BEFORE** performing any work on the rack:

- The leveling jacks are extended to the floor.
- The full weight of the rack rests on the leveling jacks.
- The stabilizing feet are attached to the rack, if it is a single-rack installation.
- The racks are coupled in multiple-rack installations.
- Only one component is extended at a time.



Warning!

The CenterPoint products weigh in excess of 30 pounds and can be awkward to handle. Handle the product carefully and use sensible lifting procedures.

Take care to insure that the internal slide unit does not extend during transportation causing the unit to become unwieldy.

For Installation you will need the following:

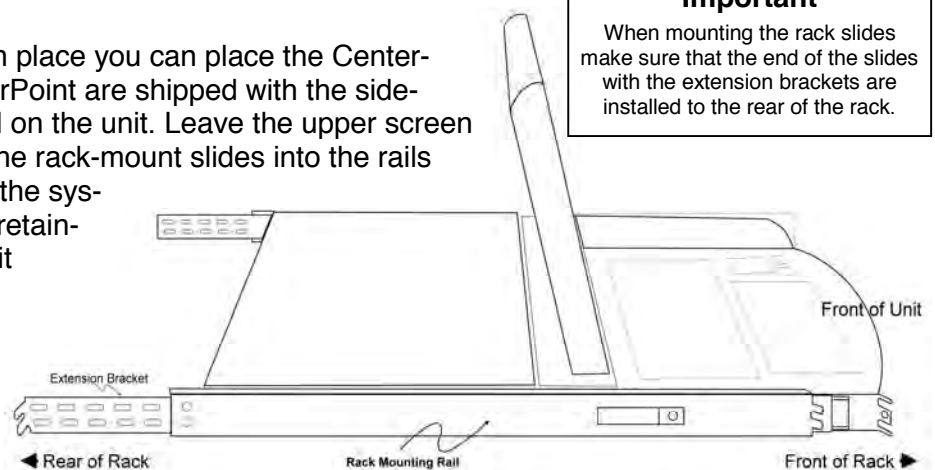
- CenterPoint
- Power cord
- Rails with hardware
- User Guide
- Epicenter KVM Cables for connecting video, keyboard, and mouse

INSTALLATION PROCEDURE

1. Insert a rack-mounting bracket into the rack at a level that will be comfortable for operating the keyboard, mouse and viewing the monitor. Align the screw holes at the front and back of the rack on both side rails. Use one screw to attach the mounting bracket to the front of the rack and two screws to attach the slide to the rear of the rack.
2. Once the rack mounts are in place you can place the CenterPoint unit in the rack. CenterPoint are shipped with the side-mount rails already installed on the unit. Leave the upper screen panel closed as you guide the rack-mount slides into the rails mounted in the rack. Once the system is in place depress the retaining buttons and slide the unit completely into the rack.
3. Secure the outer slides in place with the included retention screws.

Important

When mounting the rack slides make sure that the end of the slides with the extension brackets are installed to the rear of the rack.



CABLE CONNECTIONS

POWER

Check that the power switch is in the off position (O). Connect the included power cable to the receptacle located on the back of the CenterPoint unit.

KVM SIGNAL CABLES

Cable Description

CenterPoint uses proprietary KVM signal cables to connect to PC servers. One end of the cable is a 15-pin connector that attaches to the rear of CenterPoint. The other end is split into three connectors: one 15-pin VGA connector for attachment to a server's video output; one PS/2 connector for the keyboard and one PS/2 connector for the mouse.

Cable Lengths

Cable length affects video quality as well as keyboard and mouse data timing. The maximum cable length is determined in part by the computer and peripherals used. Not all systems give satisfactory results at the maximum length. Standard KVM cables are available in 6, 9, 12 and 20-foot lengths. A 12 foot extension cable is also available.

Connecting the Cables

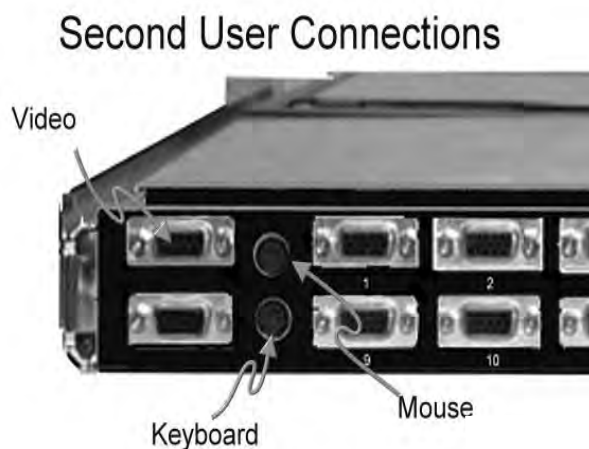
First, power up the CenterPoint unit and optionally power down any or all computers that will be connected to CenterPoint. Then, select the port that you wish to connect to on the CenterPoint unit and attach the single 15-pin connector. Once this is done, make the proper connections to the server's video, mouse and keyboard receptacles. **IMPORTANT – Insure that the single 15-pin connector of the KVM cable is connected to the Centerpoint unit first. Then, connect the other end to the server's keyboard, mouse and video outputs. Failure to do so may result in damage to the server or the CenterPoint unit.**

Repeat the above process for each of the servers that you wish to connect to CenterPoint. Once all servers are connected you may then power up and boot each of the servers, if they are not already up and running. You may now proceed to configure the CenterPoint unit using its On-Screen Menu.

Attaching the Second User Video, Keyboard and Mouse Connections on Two-User Models

Standard video monitor, keyboard and mouse for a second user are located to the left of the KVM Connector ports at the back of the unit.

To add the second user on two-user models, simply connect an external video monitor, keyboard and mouse to these ports.



ON-SCREEN CONTROLS

Control of the CenterPoint's functions is accessed through our on-screen controls. To activate the CenterPoint Main Menu, press the Pause/Break key (or PrtSc key) in the top right hand corner of the keyboard. This screen displays the current status of the system and provides access to the other functions available on the CenterPoint On-Screen Display.

```

KVM SWITCH
PORTS 1-8
PORT  SERVER
1 ► PORT-01-SERVERNAMEHERE
2 PORT-02-SERVERNAMEHERE
3 PORT-03-SERVERNAMEHERE
4 PORT-04-SERVERNAMEHERE
5 PORT-05-SERVERNAMEHERE
6 X PORT-06-SERVERNAMEHERE
7 X PORT-07-SERVERNAMEHERE
8 X PORT-08-SERVERNAMEHERE
N-NEXT          F9-S
F10-ABOUT      F11-
ESC-            ESC-

KVM SWITCH
PORTS F1-F8
PORT  SERVER
F1 X PORT-F1-SERVERNAMEHERE
F2 + PORT-F2-SERVERNAMEHERE
F3 X PORT-F3-SERVERNAMEHERE
F4 PORT-F4-SERVERNAMEHERE
F5 X PORT-F5-SERVERNAMEHERE
F6 PORT-F6-SERVERNAMEHERE
F7 X PORT-F7-SERVERNAMEHERE
F8 PORT-F8-SERVERNAMEHERE
P-PREVIOUS      F9-SETUP
F10-ABOUT      F11-RESCAN
ESC-EXIT        ESC-EXIT
```

On this screen the symbols preceding the Port Name are:

- : Port is connected and is currently selected by the current user (Characters in Green)
- + : [Two-user models only] Port is connected and is currently selected by user two (Characters in Red)
- Blank**: Port is connected and is not currently selected
- X**: No active system is currently attached to that port

On two-user models, when two users are connected and accessing ports, each user is highlighted in a different color. The user's current port selection is displayed in green, the other user's current port selection is displayed in red.

About

Pressing the F10 function key from the Main Display menu displays the About Screen. This screen has important information about your system including the software release currently installed on your CenterPoint.

```

CENTERPOINT 2UX16
COPYRIGHT (C) 1998-2002

SOFTWARE VERSIONS
06.09 06.03 06.08
007

EPICENTER INC
WWW.EPICENTERINC.COM

F11-CONTINUE      ESC-EXIT
```

ON-SCREEN CONTROLS

Setup Menu

From the Main Menu pressing the F9 brings up the SETUP Menu.

Select the item that you want to change by using the up and down arrow keys and then press the Enter Key to change the value of each option item.

```
                SETUP
EDIT SYSTEM NAME          ►
EDIT PORT NAMES 1-8      ►
EDIT PORT NAMES F1-F8    ►
WAKEUP SERVER . . . . . NONE
MENU POSITION . . . . .    ►
STATUS POSITION . . . . . ►
MENU ACCESS KEY . . . . . PAUSE
CHANGE PASSWORD . . . . . ►
STATUS DISPLAYS . . . . . NUMBER
STATUS SIZE . . . . .    22
STATUS BACKGROUND . . . . OPAQUE
SCREEN TIMEOUT . . . . .  NONE

F10-SAVE F11-DISCARD ESC-EXIT
```

Edit System Name

Edit System Name allows the user to assign a name for the current KVM switch. After selecting, simply type in the name you choose to use and then return to the Setup Menu. The name appears at the top of the main screen.

Edit Port Names

Edit Port Names 1-8 allows the user to assign a name to each of ports 1 through 8. Use the DOWN ARROW key to highlight the port name you wish to change and enter the desired name and/or description of the server up to 22 characters.

```
                EDIT PORT NAMES
PORT  SERVER NAME
  1  PORT-01-SERVERNAMEHERE
  2  PORT-02-SERVERNAMEHERE
  3  PORT-03-SERVERNAMEHERE
  4  PORT-04-SERVERNAMEHERE
  5  PORT-05-SERVERNAMEHERE
  6  PORT-06-SERVERNAMEHERE
  7  PORT-07-SERVERNAMEHERE
  8  PORT-08-SERVERNAMEHERE

F10-RETURN TO SETUP ESC-EXIT
```

Use the F10 key to go back to the SETUP Menu. NOTE: The changes you make will not take permanent effect until you leave setup using the SAVE key. Edit Port Names F1-F8 allows the user to assign a name and description to each of ports 9 through 16 on 16 port KVM switches. Repeat the same steps as Edit Port Names 1-8.

Wakeup Server

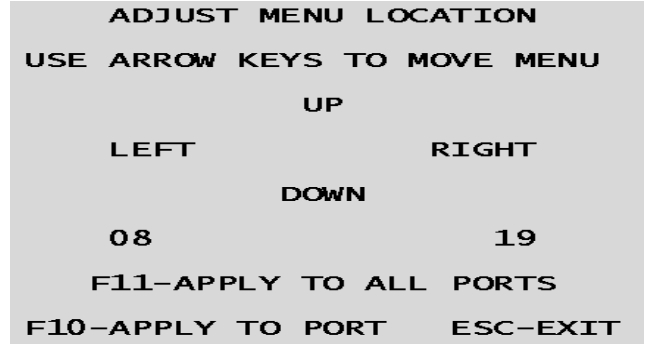
Because the server you switch to may have screen saving in effect, we have incorporated a method to automatically wake up the server's display when you switch to it. This setting allows you to select the signals sent to the server to cause it to wake up. You can choose between "None" – no wakeup signal sent to server; "Shift" – a shift key code is sent to the server to wake it up; "CTRL" – sends a control key code to the server; "Mouse" – sends mouse movements, forward and back, to the server. The default setting is "None". Use the Enter key to cycle through the choices.

ON-SCREEN CONTROLS

Menu Position

Adjust Menu Location displays a submenu that is used to adjust the position of the menu window on the display. It can be set for each port independently or the same setting applied to all of the ports. Use the arrow keys to move the menu box to the desired position on the display.

When you are finished press the F11 to have the new position apply to all ports or the F10 key to apply only to the selected port. After pressing either F11 or F10 keys the SETUP Menu is displayed.



Status Position

Adjust Status Location displays a submenu that is used to adjust the position of the status window flag on the display. It can be set for each port independently or the same setting applied to all of the ports. Use the arrow keys to move the menu box to the desired position on the display. (See Adjust Menu Position screen above.)

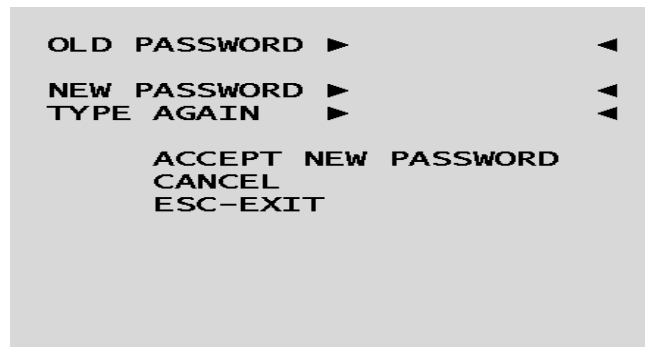
When you are finished press the F11 to have the new position apply to all ports or the F10 key to apply only to the selected port. After pressing either F11 or F10 keys the SETUP Menu is displayed.

Menu Access Key

Menu Access Key: Determines which keyboard key will activate the CenterPoint selection menu. If set to PAUSE, then the Pause/Break key will activate the CenterPoint menu. If set to PRTSCR then the Print Screen/Sys Rq key will activate the CenterPoint menu. Use the DOWN ARROW key to highlight the MENU ACCESS KEY field and press the ENTER key to toggle between the two options.

Change Password

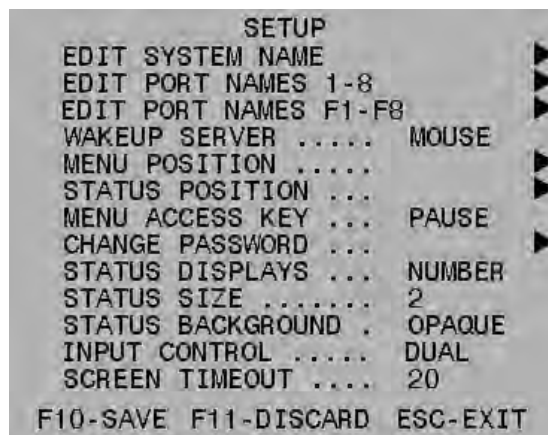
Change Password displays a submenu that allows the user to change the password that is needed to save the changes to any of the Setup changes. The submenu will prompt for the old password and then the new password twice. Highlight the OLD PASSWORD entry field and type the old password (default is blank). Then highlight the NEW PASSWORD entry field and type a password of 11 characters or less. Highlight the TYPE AGAIN entry field and re-type the new password. Highlight the ACCEPT NEW PASSWORD and press the ENTER key to go back to the SETUP Menu.



ON-SCREEN CONTROLS

Status Displays

Status Displays selects the information that will be displayed in the status window flag. If set to NUMBER, then upon closing the menu, a small status window flag will display the port number 1 through 8 or F1 through F8 indicating the active port. If set to NAME, then the name assigned to that port (Edit Port Names) will be displayed in the status window flag. Use the DOWN ARROW key to highlight the STATUS DISPLAYS field and press the ENTER key to display different options.



Status Size

Status Size determines the size of the status window flag in number of characters: the minimum is 2 and maximum is 22. Use the DOWN ARROW key to highlight the STATUS SIZE field and press the ENTER key to display different options.

Status Background

Status Background determines if the status window flag should be opaque or translucent in showing the port name or number. If set to TRANSL then the status window flag is translucent. If set to OPAQUE then the status window flag is opaque. Use the DOWN ARROW key to highlight the STATUS BACKGROUND field and press the ENTER key to toggle between the two options.

Input Control (One-User Models ONLY)

Input Control can be set to DUAL or LOCAL. On LOCAL only, the primary, internal to CenterPoint keyboard and mouse are enabled. On DUAL setting, both the primary inputs and the external keyboard and mouse are enabled. Use the DOWN ARROW key to highlight the INPUT CONTROL field and press the ENTER key to toggle between the two options.

Screen Timeout

Screen timeout sets the number of minutes of inactivity after which the CenterPoint will invoke a sleep signal to the TFT. Setting a value of 0 disables the Timeout (not recommended). Pressing the Enter key changes the Timeout value. If the Timeout is less than 10, it increments in single units: between 10 and less than 60, it increments in units of 5: between 60 and less than 240, it increments in units of 10: and if it is 240 or greater, it returns to 0. In order to maximize the lifetime of the backlight we recommend the Timeout be set to 10 or less.

F10-SAVE

Pressing the F10 key prompts the user for a password match in order to save changes made in the setup menu. Type your password and enter to save all of your changes. Highlighting CANCEL will exit and return you to the SETUP Menu.

F11-DISCARD

Pressing the F11 key will cause all of your changes to be discarded, fall back to the last saved configuration and return to the Main Menu.

OPERATION

Primary User

GETTING STARTED

Slide the inner drawer of the system out until the detents of the ball bearing slides catch. Open the TFT to a comfortable viewing angle. We suggests that all servers be set to 1024x768 resolution (optimal TFT performance) and that the refresh frequency be set to a level that creates a crisp video signal.

INVOKE CENTERPOINT ON-SCREEN DISPLAY

Press the Pause/Break key (or PrtSc if defined in SETUP menu) to bring up the MAIN MENU screen of the CenterPoint . From within the MAIN MENU the user can select a server by one of two ways; arrow keys and enter or to press the corresponding port key to immediately jump to that server.

KEYBOARD

The CenterPoint keyboard is a standard 83-key English laptop keyboard. When NumLk is invoked (LED will display on) the right side of the keyboard becomes a keypad for number entry.

TOUCHPAD

The touchpad buttons operate in a dual mode. The standard buttons directly below will activate right and left mouse clicks. Also a tap to the dark gray portion equals a left mouse click while tapping the light gray corner will create a right mouse click

LEDs

There are four LEDs on the Centerpoint unit Caps Lock, Scroll Lock, Number Lock and TFT indicator. When the keyboard functions are enabled the GREEN LED to the top right of the keyboard will illuminate. When the TFT is not receiving a signal but is powered the TFT indicator light will remain RED. This occurs when the TFT enters a sleep mode. When a signal is detected the LED will turn from RED to GREEN.

TFT BUTTONS

The four buttons to the right of the TFT control the TFT on-screen display. These buttons allow for screen adjustments including position, contrast and brightness. All of these functions within the TFT on-screen display are dedicated to the TFT.

Second User (Two-User Models ONLY)

As mentioned previously, all of the functionality available to the primary user is available to the second user. The only difference is that the second user accesses the system through secondary keyboard and mouse inputs and a second video output device or monitor. The second user has access to any of the active ports and to the setup menus as does the primary user. Each, however, is blocked from accessing the port that is actively being controlled by the other user.

TFT SETUP AND CONTROLS

To access the on-screen TFT controls press the enter button on the right side of the display. This brings up the display's main menu.

The first selection is the Auto Adjust function. Selecting this option brings up the Auto Adjust menu. Here you can select No or Yes using the up and down buttons. If you select Yes, the TFT will attempt to automatically detect your video output specifications and reset the TFT to match.

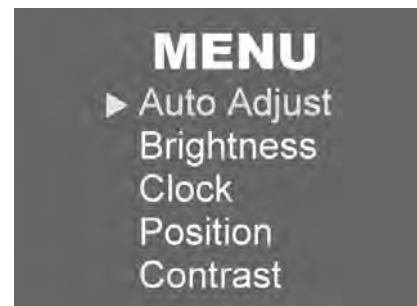
If you want to manually adjust the other settings on the TFT simply select the item, Brightness, Clock, Position or Contrast and follow the on-screen options.

Remember to use the TFT buttons next to the monitor screen, not the keyboard buttons.

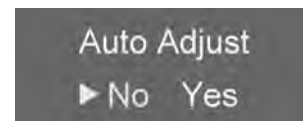
When you have completed your choices, the on-screen menu can be turned off by pressing the exit button.



TFT OSD menu buttons



TFT OSD menus



FACTORY DEFAULT SETTINGS

System Name = KVM Switch

Port Names 1- 8

PORT-01-SERVERNAMEHERE

PORT-02-SERVERNAMEHERE

PORT-03-SERVERNAMEHERE

PORT-04-SERVERNAMEHERE

PORT-05-SERVERNAMEHERE

PORT-06-SERVERNAMEHERE

PORT-07-SERVERNAMEHERE

PORT-08-SERVERNAMEHERE

Port Names F1-F8

PORT-F1-SERVERNAMEHERE

PORT-F2-SERVERNAMEHERE

PORT-F3-SERVERNAMEHERE

PORT-F4-SERVERNAMEHERE

PORT-F5-SERVERNAMEHERE

PORT-F6-SERVERNAMEHERE

PORT-F7-SERVERNAMEHERE

PORT-F8-SERVERNAMEHERE

Wake Up Server = None

Adjust Menu Offset Xpos=10 Ypos=8 for all ports

Adjust Status Position Offset Xpos = 10 Ypos = 8 for all ports

Menu Access Key = PAUSE

Password = (BLANK)

Status Shows Port = NUMBER

Status Size = 2

Status Background = OPAQUE

Input Control = DUAL (Single-User Models ONLY)

Screen Timeout = 20

INSTALLING UPGRADES

As new features become available CPI will occasionally release updates to the CenterPoint KVM software. You may want to update the CenterPoint firmware or software to take advantage of these improvements.

The upgrade procedure can be completed quickly and easily via a Window-based application. The CenterPoint product is configured to allow direct downloading from a PC or a laptop that is connected to the CenterPoint through the serial port (RS232) located next to the external mouse and keyboard connectors.

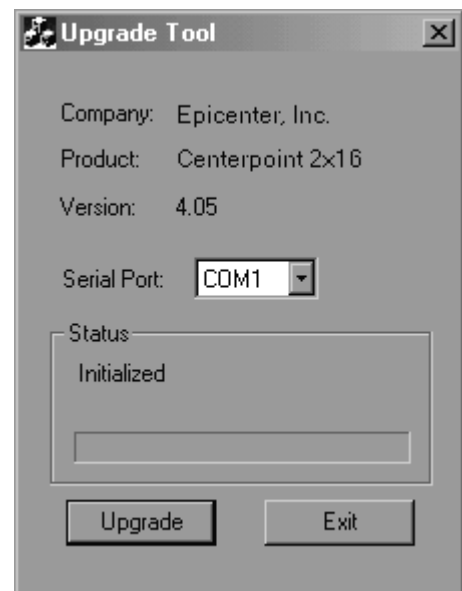
To update the firmware you need the following items:

- Laptop or PC with available serial communication port
- Standard serial cable (male DB9) that connects between CenterPoint and the PC or laptop computer
- The Upgrade.exe Software provided by CPI Technical Support on the floppy or a hard drive

Leave the CenterPoint KVM System power on. Disconnect or shut down all servers from the CenterPoint to be upgraded. Connect the serial upgrade (RS232) cable between the CenterPoint serial port to the Laptop or the PC's serial port.

Locate the Upgrade.exe program. It can be on the floppy or the hard drive. Double click on the Upgrade.exe icon or file name. When it appears, use the pull-down to select Serial Port number on you laptop or the PC. For example: COM1, COM2

- Click on the Upgrade button.
- Click OK to close the Work on Progress window when the procedure is finished.
- Click the Exit button to exit the Upgrade.exe program.
- Reconnect or boot up all servers connected to the CenterPoint.



FUSE REPLACEMENT AND MAINTENANCE

Fuse Replacement

CenterPoint is equipped with fuse protection located next to the on-off switch. To assure proper operation of the unit and prevent possible damage or fire, always replace the fuse with the same specifications:

Fuse Value: 250V, 2.0A Maximum

Care and Cleaning

Clean the LCD monitor surface with a lint-free, non-abrasive cloth. Avoid using any cleaning solution or glass cleaner!

- Adjust the monitor's brightness and contrast controls to enhance readability.
- Avoid displaying fixed patterns on the monitor for long periods of time to avoid image persistence (after-image effects).

Ergonomics

To realize the maximum ergonomics benefits, we recommend the following:

- Adjust the Brightness until the background raster disappears
- Do not position the Contrast control to its maximum setting
- Use the preset Size and Position controls with standard signals
- Use the preset Color Setting
- Use non-interlaced signals with a vertical refresh rate between 60-75Hz
- Do not use primary color blue on a dark background, as it is difficult to see and may produce eye fatigue to insufficient contrast

REGULATORY INFORMATION

Intended Use of Product:

Video Display and Keyboard, and Mouse control
Indoor Central Office Location

CenterPoint is compliant with the following standards and specifications:

European Union:

Directive No. 89/336/EEC Electromagnetic Compatibility (EMC) as amended by 92/31/EEC and 93/68/EEC

- EN 55022: 1998 +A1 +A2 Class A
- CISPR 22: 1997
- EN 61000-3-2: 1995
- EN 61000-3-3: 1995
- EN 55024: 1998,
- EN 61000-4-2: 1995
- EN 61000-4-3: 1995
- EN 61000-4-4: 1995
- EN 61000-4-5: 1995
- EN 61000-4-6: 1995
- EN 61000-4-11: 1994

Directive No. 73/23/EEC Low-Voltage-Directive (LVD), as amended by 93/68/EEC for CE Marking

- EN/IEC 60950:1992 +A1, +A2, +A3, +A4

The Technical Construction File is held by Epicenter, Inc., 211B Calle Pintoresco, San Clemente, CA 92672

International:

- CISPR 22: 1997 Class A
- CISPR 24: 1997
- IEC 950: 1992 +A1, +A2, +A3, +A4

United States Of America:

- UL Listed for I.T.E, E212076
- FCC CFR 47 Part 15 Subpart B, Section 15.107(a) and Section 10.103(a), Class B Digital Device

SPECIFICATIONS

Environmental

Temperature

- Operating: 32° to 104° F (0° to 40° C)
- Non-operating: -4° to 140° F (-20° C to 60° C)

Humidity

- Non-condensing, operating: 10 to 90%
- Non-condensing, non-operating: 5 to 95%

Altitude

- Operating: 0 to 10,000 ft (0 to 3048 m)
- Non-operating: 0 to 30,000 ft (0 to 9144 m)

Audible Noise

- Less than 60 dbA.

Heat Dissipation

- 85 Btu/hr maximum

Shock

- Operating: 5 to 500 Hz, 0.5 g (0.1 oct/min)
- Non-operating: 5 to 100 Hz, 1 g (0.1 octave/min); 100 to 500 Hz, 1.5g (0.2 octave/min); 500 to 1000 Hz, 1.5 g (0.2 octave/min)

Electrical

Grounding

- Chassis grounded

Voltage

- 100 to 240V AC.

Current

- 0.5 Amps at 240V AC up to 1 Amps at 100V AC.

Line Frequency

- Single phase 50 or 60 Hz.

Compatibility

XVGA 1024 x 768.

SVGA 800 x 600.

VGA 640 x 480

PS/2 Keyboard

PS/2 Mouse

SPECIAL INSTRUCTIONS FOR CONNECTING A SUN SERVER

Setting Up the Video Display Option on the Server:

If the server is running with an existing graphics monitor and resolution, please use the following step to change the resolution at the console and window mode:

Note: The Sun device MUST be capable of running at 1024x768 resolution to display on a CenterPoint system.

Hook up an external multi-sync XGA monitor (capable of 1280x1024 and higher).

Power On the server.

If the system is in autoboot mode then halt the system to get to the boot prompt (or console mode).

At the boot prompt, type:

```
>> setenv output-device screen:r1024x768x70 <return>
```

Boot up the system.

Logon to the Server as "root"

Open a terminal session window and enter the following command lines:

```
#cd /usr/sbin <return>
```

```
#fbconfig -res 1024x768x70 <return> or #m64config -res 1024x768x70 <return>
```

```
#cd /etc/openwin/server/etc <return>
```

Edit the "owconfig" file and search for the string "TSIres". Verify the string is set to 1024x768x70.

If not then change it to 1024x768x70.

Save the modified file.

Reboot the system.

At this time the TFT display should show the video properly.

Remove the external monitor.

CABLE CONNECTIONS (SUN-TO-PS/2 CONVERTER)

- Power down the Server and the CenterPoint unit.
- Plug one end of the Sun keyboard patch cable (mini din 8 pin connectors on both ends) to the keyboard port on the back of the Sun server and the other end to the input of the Sun-PS/2 Converter.
- Plug the HD15 video connector, from the end of the KVM cable that has 3 connectors (one for keyboard, one for mouse, and one for Video) to the HD15 video output on the Sun server.
- Plug the PS/2 keyboard connector of the KVM cable to the PS/2 connector that is marked for keyboard of the Sun-PS/2 Converter box.
- Plug the PS/2 mouse connector of the KVM cable to the PS/2 connector that was marked for mouse of the Sun-PS/2 Converter box.
- Plug the single ended HD15 connector of the KVM cable to the desired port on the CenterPoint unit

SPECIAL INSTRUCTIONS FOR CONNECTING A SUN SERVER

Once all connections are complete:

- Power ON the CenterPoint unit.
- Press the Pause/Break key and choose the port number that the Sun server is attached to and press return.
- Power ON the Server.

The server is ready for entering the Boot command.

TROUBLE SHOOTING

If these steps do not allow the Sun to be displayed please follow these steps:

- Check ALL cable connections using information provided in Cable Connections section.
- Attach a Multi-Sync Monitor to the External Video Port on the CenterPoint. Using the keyboard and the touchpad of the CenterPoint to boot the Server and verify the current resolutions of the console and window modes. If they are not set to 1024x768 70 Hz repeat steps that change the resolution.
- Reboot the Server.
-

KEYBOARD MAPPING

Special keys on the Sun keyboard are mapped to the following on the CenterPoint keyboard.

Sun Key	CenterPoint Keyboard
Stop	R_CTRL & F1
Again	R_CTRL & F2
Props	R_CTRL & F3
Undo	R_CTRL & F4
Front	R_CTRL & F5
Copy	R_CTRL & F6
Open	R_CTRL & F7
Paste	R_CTRL & F8
Find	R_CTRL & F9
Cut	R_CTRL & F11
Help	R_CTRL & H
Right ♦	Right WINDOWS Key
Left ♦	Left Windows Key
Compose	WIN CMD
Alt Graph	R_ALT