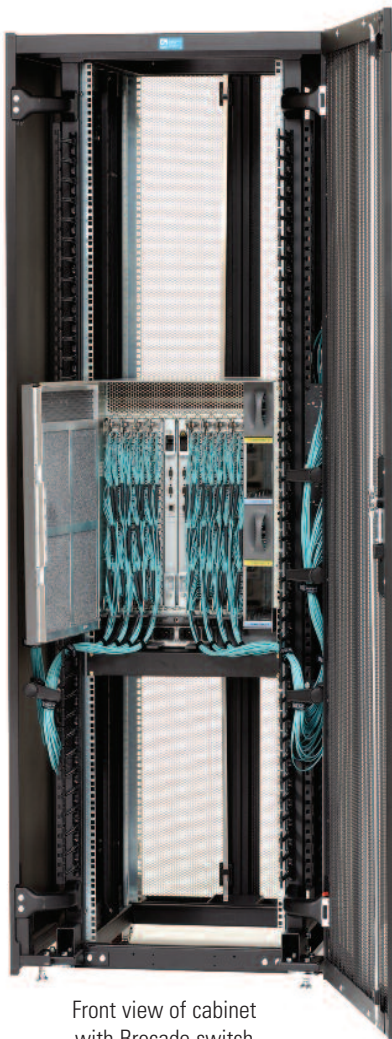


PRODUCT APPLICATION

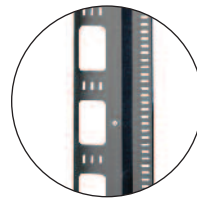
CPI Fiber Management for TeraFrame® Family of Cabinets

The CPI Fiber Management System, used with CPI's TeraFrame® Family of Cabinets is designed to support Corning Cabling Systems Plug & Play™ Universal Systems, part of LANscape® Pretium™ Zero-U Solutions. These solutions have been integrated together to address the cabling challenges of Brocade and Cisco equipment, greatly reducing the amount of space occupied by cabling in cabinets, accelerating the deployment for high-density Storage Area Networks (SANs), improving air circulation and simplifying future moves, adds and changes. CPI Fiber Management and Corning LANscape Pretium Zero-U Solutions provide TIA-942 compliant infrastructure and connectivity for N-Series TeraFrame® Network Cabinets containing high-density modular switches, and F-Series TeraFrame® Cabinets housing lower-density servers and data storage equipment via cross-connections in the data center's main distribution area.

CPI's Fiber Management components support Corning's LANscape Pretium Zero-U Solutions providing easy attachment and strain relief for trunk cables and simple mounting of modules and/or high-density MTP adapter panels in the 0 RMU space located between the cabinet frame and side panels.

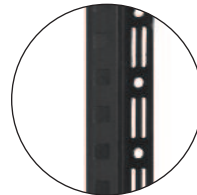
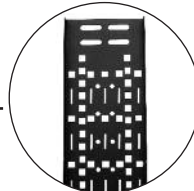


Front view of cabinet with Brocade switch



Fiber Trunk Cable Manager

Vertical Furcation Bracket



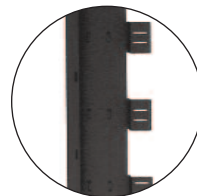
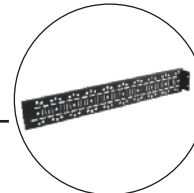
Universal Accessory Bracket

Swivel Cable Spool



Fiber Module Adapter

Horizontal Furcation Bracket



Fiber Module Bracket



Side view of cabinet with Cisco switch

These solutions can eliminate 77% of bulk cabling in the SAN director's cabinet vertical managers and up to 77% of cable congestion in the director backplane.

CORNING
LANscape®
Pretium™ Solutions



CHATSWORTH PRODUCTS, INC.

800-834-4969

techsupport@chatsworth.com
www.chatsworth.com

CPI Fiber Management System Components:

Fiber Trunk Cable Manager

Manages and supports Corning Cable Systems Plug & Play Universal Systems trunk cables

- Provides critical strain relief and vertical support for heavy bundles of cable
- Protects trunk cables
- Installs easily into the N-Series TeraFrame Cabinet

Vertical Furcation Bracket

Provides attachment points for the trunk cable furcation plugs and tie points for securing the trunk cables to the bracket

- Position fiber anywhere in the cabinet for easy alignment with connecting points
- Furcation plugs snap in for easy installation

Universal Accessory Rail

Provides attachment points at each RMU for any combination of Swivel Cable Spools, Fiber Module Adapters and Corning Cable Systems high-density MTP adapter panels

- Locate MTP adapter panels and CCH modules next to equipment
- Attach Fiber Module Adapters and Swivel Cable Spools easily

Swivel Cable Spool

Manages optical fiber harness assemblies and patch cords as the cables transition from the Universal Accessory Rail to connections in rack-mount equipment

- Manages cable slack in dense fiber installations
- Attaches to the Universal Accessory Rail in the 0 RMU space
- Rotates 360° with stops at each 90°
- Captive mounting screws make it easy to install

Fiber Module Adapter

Supports Corning Cable Systems Plug and Play Universal Systems CCH Module for low-density applications

- Attaches to the Universal Accessory Rail in the 0 RMU space
- Captive mounting screws make it easy to install
- CCH Module snaps in easily

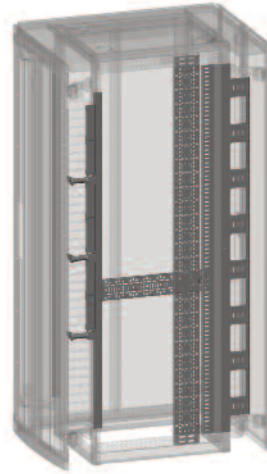
Horizontal Furcation Bracket

Secures trunk cables in the vertical orientation as the cables enter the cabinet or as a horizontal support for the furcation legs of the trunk cable

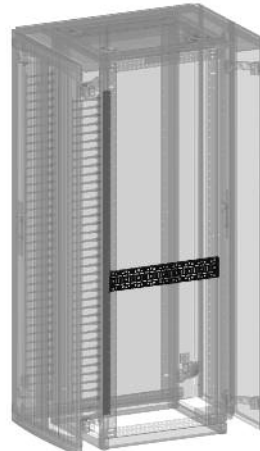
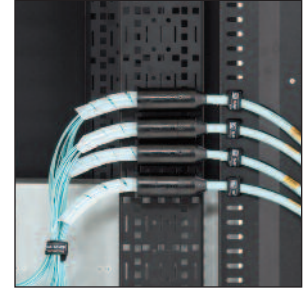
- Can be used in either F-Series TeraFrame Cabinet or N-Series TeraFrame Network Cabinet

Fiber Module Bracket

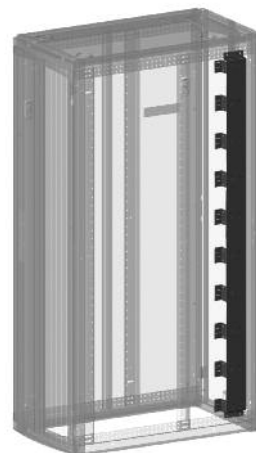
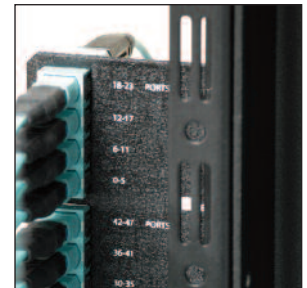
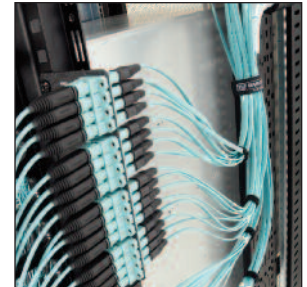
Use in the F-Series TeraFrame Cabinet to support Corning Cabling Systems Plug & Play Universal Systems CCH Module and fiber optic patch cords in the 0 RMU space between the cabinet frame and the cabinet side panel



N-Series TeraFrame Network Cabinet with Fiber Trunk Cable Manager, Vertical Furcation Bracket, Universal Accessory Rail with Swivel Cable Spool and Fiber Module Adapter



N-Series TeraFrame Network Cabinet with Horizontal Furcation Bracket and Universal Accessory Rail



F-Series TeraFrame Cabinet with Fiber Module Bracket



All products quoted are subject to availability based on manufacturing capacity and shipping dates should be considered estimates only. While every effort has been made to ensure the accuracy of all information, CPI does not accept liability for any errors or omissions and reserves the right to change information and descriptions of listed services and products.



CHATSWORTH PRODUCTS, INC.

©2010 Chatsworth Products, Inc. All rights reserved. CPI, CPI Passive Cooling, MegaFrame, Saf-T-Grip, Seismic Frame, SlimFrame, TeraFrame, Cube-IT Plus, Evolution, OnTrac, and QuadraRack are federally registered trademarks of Chatsworth Products, Inc. GlobalFrame, Simply Efficient and Velocity are trademarks of Chatsworth Products, Inc. All other trademarks belong to their respective companies. Rev.5 12/10 MKT-60020-389