 Signature Solutions ...

Power Management



CHATSWORTH
PRODUCTS, INC.

Helping you

Organize. Store. Secure.SM

technology equipment ...

Power Management Solutions

To maintain efficient distribution of power and reduce downtime, it is important to select and use the appropriate power management products for your cabinet and rack systems. With today's increasing high power density applications, power management products have become an integral part of the overall data center solution. By offering a broad selection of power options, you can count on Chatsworth Products, Inc. Power Management Solutions to satisfy your various power requirements.

Meeting Critical Cabinet and Rack System Power Needs for Over a Decade

With an extensive selection of Power Management Products, CPI can help you meet your data center cabinet and rack power requirements with our Single-Phase Power Strips, Three-Phase Power Strips and Power Distribution Units (PDUs) for both vertical and horizontal applications.

Single-Phase Power Strips for Every Application

Allow multiple pieces of equipment to share a single power source within a cabinet or rack by using CPI's Vertical and Horizontal Single-Phase Power Strips. Vertical power strips provide a large number of configurations without consuming RMU space, while horizontal power strips are compact and easily install in any rack-mount environment.

Whether you need a basic or high performance power strip, CPI offers an extensive range of features and benefits to meet a variety of needs. Equipped with thermal or magnetic circuit breakers and optional surge-protection, CPI's Vertical and Horizontal Single-Phase Power Strips can provide critical power protection to equipment, while built-in circuit breakers guard against current overdraw and damage to the equipment and surge protectors block voltage spikes from reaching equipment. Some models offer a built-in or IP local current meter with a digital display which shows the amount of current that is being used by equipment. This feature allows the user to judge the remaining capacity on the power strip before adding a new device to the circuit and provides Ethernet-based monitoring of current with programmable current limits that can send SNMP traps as alarms.

Choose from CPI's Single-Phase Power Strips which offer:

- 300+ models available
- 125 Volt and 250 Volt
- 15 Amp, 20 Amp, 30 Amp
- Vertical and Horizontal (19" EIA rack-mount)
- NEMA and IEC inlets and outlets
- Various outlet configurations
- Optional local and IP Metering
- Optional surge suppression
- Optional thermal or magnetic breakers



Three-Phase Power Strips for High-Density Applications

As network, computer and data storage equipment becomes more compact, additional equipment is being placed in each cabinet and rack, increasing the amount of power required. To meet these growing power requirements, CPI offers Three-Phase Power Strips that supply one single three-phase branch circuit which delivers the same amount of power as three single-phase branch circuits using less conduit, less electrical wire and fewer power strips per rack.

Choose from a four-wire 250 Volt DELTA or a five-wire 120/208 Volt WYE configuration to match typical data center power distribution practices. The WYE configuration includes several power strips that deliver both 120 Volt and 208 Volt power (a feature unique to WYE configurations).

Vertical and Horizontal (19" EIA rack-mount) Three-Phase Power Strips are available with various combinations of outlets and plugs and current meters are offered as options on some models. Local current meters have a scrolling digital display that indicates the amount of current being used on each phase, and the IP current meter allows Ethernet based monitoring of current with programmable current limits that can send SNMP traps as alarms.

Choose from CPI's Three-Phase Power Strips which offer:

- 100+ models available
- 120/208 Volt WYE and 250 Volt Delta
- 20 Amp, 30 Amp, 60 Amp, 80 Amp, 120 Amp
- Vertical and Horizontal (19" EIA rack-mount)
- NEMA and IEC inlets and outlets
- Various outlet configurations (mix of outlets)
- Optional local and IP Metering
- Optional magnetic breakers



Magnetic Circuit Breakers



IP Meter



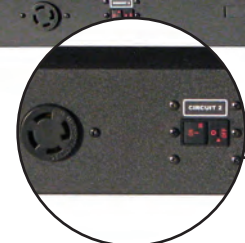
120 Volt and 208 Volt Outlets

Power Distribution Units

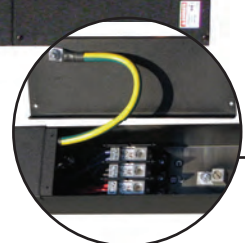
To handle the demands of equipment with higher current requirements, CPI offers PDUs to distribute power to critical equipment. CPI's PDUs can be used to deliver power directly to equipment, or complementary power strips can be used to increase the number of outlets available for more equipment.

Choose from CPI's PDUs which offer:

- Multiple circuits created from a single high-power circuit
- Redundant power provided when used in combination with power strips in multiple cabinets or racks
- Power problems isolated on the rack or cabinet
- Use as a power strip for large equipment



Blade Ready L15-30R Outlets



Hardwire Connection

Why Choose CPI? Flexibility, Availability and Reliability

Chatsworth Products, Inc. (CPI) is a leading manufacturer of systems designed to organize, store and secure IT infrastructure equipment. As an industry leader, CPI Products set the benchmark by providing superior structural support that exceeds customer expectations through innovation, function and performance. Unequalled customer service and technical support, as well as a global network of industry-leading distributors, assures our customers that CPI is dedicated to delivering IT infrastructure solutions designed to meet their needs.

Flexibility

- Achieve Data Center Objectives
- Broad Product Selection
- Customized Configurations
- Adaptable for Future Applications

Availability

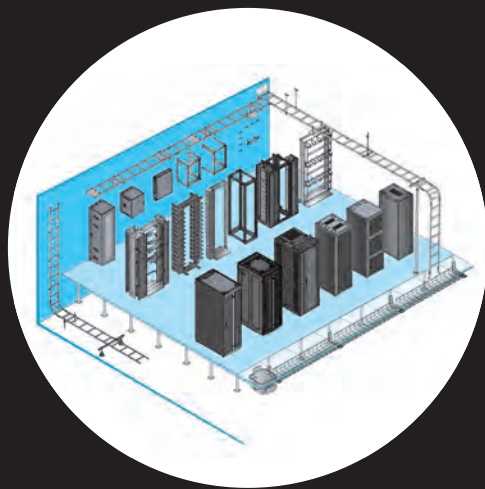
- Global Network of Distributors
- Short Factory Lead Times
- On-Time Delivery

Reliability

- High Quality Products
- Customer Service & Technical Support
- Heavy Duty Packaging

The CPI Total Solution Includes:

Equipment Support	Cable Management
Cable Pathways	Grounding & Bonding
Security & Monitoring	Thermal Management
Power Distribution	Seismic Bracing



CPI Locations

USA

Corporate Office
Weslake Village, CA
818-735-6100

Chatsworth, CA Operations
818-882-8595

Georgetown, TX Operations
512-863-7800

New Bern, NC Operations
252-514-2779

Caribbean and Latin America

Mexico City, Mexico
+52 55 5203-7525
Toll Free 01-800-201-7592

Europe, Middle East, Africa

Buckinghamshire, England
+44 808-234-4497

Asia Pacific

Pudong, Shanghai
+86 21 6880 0266

Find more information about CPI Power Management Solutions at
www.chatsworth.com/power

800-834-4969

techsupport@chatsworth.com

All products quoted are subject to availability based on manufacturing capacity and shipping dates should be considered estimates only. While every effort has been made to ensure the accuracy of all information, CPI does not accept liability for any errors or omissions and reserves the right to change information and descriptions of listed services and products.

©2009 Chatsworth Products, Inc. All rights reserved. CPI, CPI Passive Cooling, Saf-T-Grip, Seismic Frame, SlimFrame and MegaFrame are federally registered trademarks of Chatsworth Products, Inc. Cube-IT Plus, Evolution, OnTrac, QuadraRack, Simply Efficient and TeraFrame are trademarks of Chatsworth Products, Inc. All other trademarks belong to their respective companies. MKT-60020-422 NB/01/09



**CHATSWORTH
PRODUCTS, INC.**