

# Frequently Asked Questions

## Evolution™ Cable Management



### **Q. What are the benefits of Evolution™ Cable Management over other CPI cabling sections?**

A. Evolution Cable Management is designed for larger, heavier cables, like Cat 6a UTP.

- Evolution Cable Managers are larger (have more interior space for cables) than similar CPI cabling sections to hold more cable
- The T-shaped cable guides (fingers) on Evolution Cable Management deliver market-leading size and strength to resist bending and deflection from heavier or stiffer cables like 6a UTP
- The Cable Lashing Bar Kit and Fiber Segregation Kit provide innovative enhancements to the cable management capacity and capability of Evolution vertical cable managers
- The doors on vertical managers are supported from the top and bottom of the manager; the door opens wider and the hinge point does not use or interfere with any of the cable access points
- The doors on vertical managers have two-point latches controlled by a single knob, instead of two knobs, on each side of the manager and open wider than doors on the cabling sections

- The horizontal manager has longer T-shaped cable guides (fingers) to hold more cables and align with the vertical managers better
- The cover on the horizontal manager will stay open when opened upward; the cover and hinge design allows the cover to rest on the top of the fingers in the open position

### **Q. Which racks will support Evolution Cable Management?**

A. Evolution Cable Management can be used with Universal Rack, Standard Rack, QuadraRack™ 4-Post Frame, QuadraRack™ ServerFrame, Adjustable QuadraRack™, Adjustable Server Rack, Adjustable Rail QuadraRack™ and Adjustable Rail ServerRack.

### **Q. Can Evolution Cable Management Vertical Managers be used in CPI Cabinets?**

A. No, Evolution Cable Management Vertical Managers are designed for use with Rack Systems (open, two-post and four-post racks). However, the F-Series TeraFrame® Cabinet and the M-Series MegaFrame® Cabinet have cable managers that offer similar features to Evolution Cable Management.

### **Q. How many cables will Evolution Cable Management hold?**

A. The number of cables that Evolution Cable Management will hold depends on the size (width) of the cable manager, usable space within the manager, the size of the cable and the cable fill ratio. Please refer to the CPI Cable Fill Tables at ([www.chatsworth.com/cablefill](http://www.chatsworth.com/cablefill)) to determine cable fill.

### **Q. What is the difference between an Evolution g1 Single-Sided, an Evolution g2 Double-Sided and an Evolution g3 Combination Vertical Cable Manager?**

A. The Evolution g1 Single-Sided Vertical Cable Manager is a single-sided vertical cable manager with plastic T-shaped cable guides (fingers) on the front only and a door. The Evolution g2 Double-Sided Vertical Cable Manager is a double-sided vertical cable manager with plastic T-shaped cable guides (fingers) on the front and rear. The g2 includes a curved front door and a flat rear door. The internal mid-sections can be moved to create a 40/60, 50/50 or 60/40 front/rear split of the internal cable management space. The Evolution g3 Combination Vertical Cable Manager is a double-sided vertical



CHATSWORTH PRODUCTS, INC.

+1-800-834-4969

[techsupport@chatsworth.com](mailto:techsupport@chatsworth.com)  
[www.chatsworth.com](http://www.chatsworth.com)

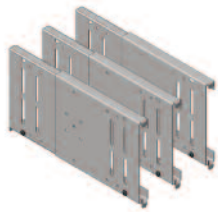
# Frequently Asked Questions

## Evolution™ Cable Management

cable manager made by combining a single-sided vertical cable manager on the front side and multiple large, open cable rings on the back side.

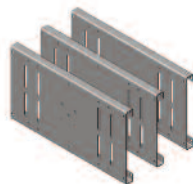
### Q. What is a Movable Mid-Section?

A. The Movable Mid-Section is part of the Evolution g2 Double-Sided Vertical Cable Manager. The front and rear cable troughs inside the double-sided manager are separated by a Movable Mid-Section. The mid-section can be positioned front to rear to create a 40/60, 50/50, or 60/40 front/rear split of the internal usable space. Double-sided managers are typically used to support patch panels and other connectivity. The front side is typically used for patch cords. The rear side is typically used for premise cables. The Movable Mid-Section lets the customer adjust the internal space to match cabling requirements.



### Q. What is the difference between a Movable Mid-Section and a fixed accessory panel?

A. The Movable Mid-Section is used in Evolution g2 Double-Sided Vertical Cable Manager to divide the front and rear of the manager. Each cable manager includes three Movable Mid-Sections. There are several positions for mid-sections on each manager. Movable Mid-Sections can be moved (relocated) front-to-rear to create a 40/60, 50/50 or 60/40 front/rear split. The fixed accessory panel is used in Evolution g1 Single-Sided Vertical Cable Manager to define the back of the manager. Each cable manager includes three fixed accessory panels. There are several positions for panels on each manager. Fixed accessory panels are attached to the back of the manager only - in a fixed location. Movable Mid-Sections and fixed accessory panels allow the middle of the double-sided manager and the back of the single-sided manager to be mostly open to allow easy pass-through of large cable bundles. Cable management accessories, like the Cable Distribution Spools, Fiber Segregation Kit and Cable Lashing Bar Kit, also attach to the Moveable Mid-Section and fixed accessory panels.

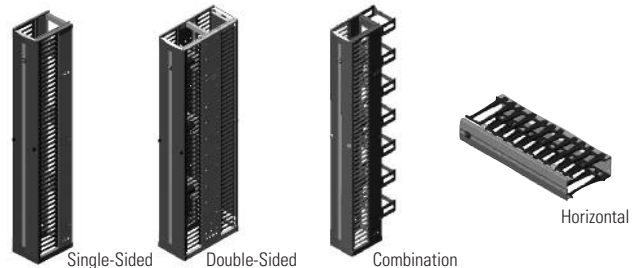


### Q. How is the door on the vertical manager removed?

A. The door on the vertical manager has a two-point latch with a single knob on both the right and left side of the door. The latches attach to the top and bottom of the manager trough and also serve as hinges for the door. To open the door, the right or left knob on front of the door is turned. The door opens, hinging on the opposite side. To remove the door, both knobs are turned and the door is tilted forward, and then lifted off. Replace the door by aligning the latch with the supports on the manager trough. Turn the knobs to attach and secure the door.

### Q. Can the T-shaped cable guides (fingers) on the vertical managers be removed?

A. No, the guides are not designed to be easily removed. The T-shaped cable guides on the vertical managers are 7U plastic components that snap into the front metal edge of the vertical manager trough. The snap mechanisms on the backs of the cable guides are not accessible once the guides are installed. The guides can be forcibly pulled from the manager, but this may damage the snap mechanisms on the guides so that the guides will not properly reattach to the manager.



CHATSWORTH PRODUCTS, INC.

All products quoted are subject to availability based on manufacturing capacity and shipping dates should be considered estimates only. While every effort has been made to ensure the accuracy of all information, CPI does not accept liability for any errors or omissions and reserves the right to change information and descriptions of listed services and products. ©2010 Chatsworth Products, Inc. All rights reserved. CPI, CPI Passive Cooling, MegaFrame, Saf-T-Grip, Seismic Frame, SlimFrame and TeraFrame are federally registered trademarks of Chatsworth Products, Inc. Cube-IT Plus, Evolution, OnTrac, QuadraRack, Simply Efficient and Velocity are trademarks of Chatsworth Products, Inc. All other trademarks belong to their respective companies. Rev.2/06/10 MKT-60020-391