

GF-SERIES GLOBALFRAME® CABINET SYSTEM

KEY FEATURES

- Cost-effective cabinet solution adaptable to server, network and mixed-use applications
- Available in two configurations to support front-to-rear or front-to-top airflow
- Sized to match industry standards
- Supports up to 3,000 lb (1360 kg) of equipment
- Wide range of thermal, power and cable management accessories
- Select models immediately available with same day shipping

APPLICATION

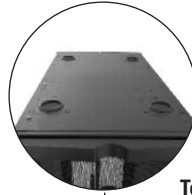
- Cost-effective cabinet solution for server, network and mixed-use applications in data centers, computer rooms and equipment rooms

USE WITH

- Snap-In Grommet & Plug Kit
- Bottom Panel Kit
- Cable Port Brush Kit
- Fan Top Panel Kit
- Brush Side Panel
- Vertical Cable Managers or Rings
- Vertical Power Managers
- Baying Seal Kit

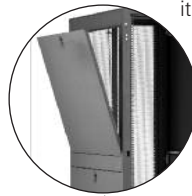
RELATED ACCESSORIES

- Snap-In Filler Panels
- Saf-T-Grip® Straps
- Rack-Mount Cable Shelf
- Rack-Mount PDUs



Tool-less Top Panel with Configurable Knock-Outs

Top panel snaps into position after it is configured for easy installation



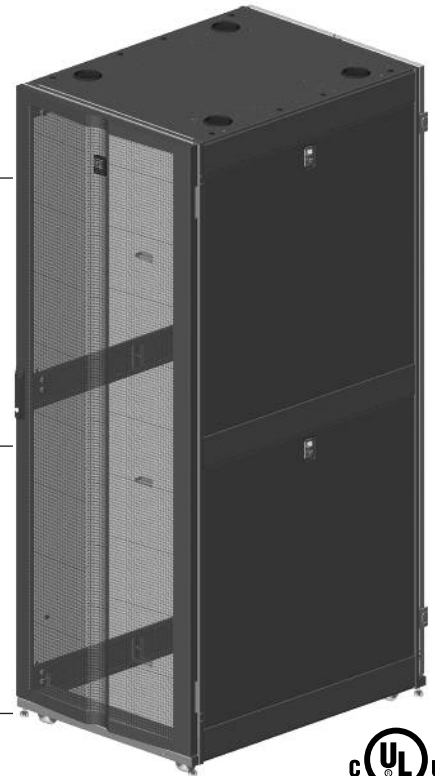
Split Side Panels

Easy to handle and remove to access equipment



Supports Front-To-Rear or Front-To-Top Airflow

Available in two configurations to support airflow requirements



The GF-Series GlobalFrame® Cabinet System is an easy-to-use, cost effective, computer and network equipment storage cabinet that complies with data center, computer room and premise network equipment room requirements. The GlobalFrame is available in 30 popular frame sizes, several of which are stocked for quick shipment.

The enhanced frame design handles up to 3000 lb (1360 kg) of equipment load. Equipment mounting rails are easily adjustable by loosening three hex nuts and the markings on the frame provide easy vertical alignment during adjustment. The rails feature a Z-shaped design and have attachment points along the sides for accessory cable rings that create a vertical pathway for cables. Every cabinet includes a top panel, front and rear doors, PDU mounting brackets, casters, leveling feet and floor attachment brackets.

The GF-Series GlobalFrame is available in Standard and Vertical Exhaust Duct configurations. Select the standard configuration with perforated metal front and rear doors to support front-to-rear airflow in traditional hot aisle/cold aisle or enclosed aisle applications. The standard configuration features a solid top panel with four large knockouts for cable access and a double (vertically split) perforated metal rear door for easy access to equipment.

Select the Vertical Exhaust Duct configuration with perforated metal front door and solid metal rear door to support front-to-top airflow and isolate hot exhaust air as it exits the cabinet using CPI Passive Cooling®. Isolating hot exhaust air from the room creates a more uniform room air temperature, eliminates hot spots, allows higher temperature set points, increased chilled water temperatures and enables more hours of economizer cooling. The Vertical Exhaust Duct configuration features a top panel with two large knockouts in the front corners for cable access, an extendable top-mount Vertical Exhaust Duct, a seal for the rear door and a Bottom Panel.

Create a cabinet solution that fits your needs by selecting specific thermal, cable and power management accessories. See inside for product details. Contact CPI Technical Support or visit the CPI Website (www.chatsworth.com) for assistance.



SPECIFICATIONS

- Freestanding equipment cabinet provides front and rear support for 19"W (482.6 mm) EIA rack-mount equipment and shelves
- For indoor use only, in environmentally controlled areas; not harsh environments or in air-handling spaces
- Includes:
 - Welded and bolted steel four-post frame
 - Equipment mounting rails, two pairs
 - Equipment mounting hardware, (25) M6 cage nuts and screws
 - Factory installed grounding/bonding system
 - Leveling feet and casters
 - Floor attachment brackets
 - PDU Brackets, one pair, for mounting two vertical CPI PDUs
 - Baying kit for 600 mm and 24" tile spacing
 - Standard or Vertical Exhaust Duct top panel with cable access ports/knock-outs
 - Perforated metal front door
 - Double perforated metal rear door with standard top panel
 - Solid metal rear door with Vertical Exhaust Duct top panel
 - Bottom Panel with Vertical Exhaust Duct top panel
 - Solid metal side panels (optional)
- Equipment Space:
 - See Height, Width and Depth tables under Ordering Information/Dimensions
- Doors/Latches:
 - Front door is curved, perforated metal
 - Rear door is flat, perforated metal or solid metal
 - Swing handle latch with keyed lock
 - Easy to remove; reversible to open from the right or left
- Side Panels:
 - Order with cabinet or as an accessory
 - Solid, two-piece panels (half-height, full-depth); each panel has a single recessed spring-loaded locking latch located near the top, center of the panel; the latch is keyed to match the front/rear door
- Top Panel:
 - Two styles are available: standard or Vertical Exhaust Duct
 - Tool-less installation and removal (after removing shipping fasteners), spring-release pins secure the panel on the cabinet frame
 - Includes 2.8"(71 mm) round cable ports in each corner with included rubber grommets to seal openings and four additional 2.8" (71 mm) knockouts (one in each corner). Additional rubber grommets (P/N 35021-000) sold separately.
 - The 2.8" (71 mm) round access ports can be removed entirely by removing the larger 4.5"W x 9.0"D (114 mm x 228 mm) rectangular knockouts. The Cable Port Brush Kit (P/N 25190-001) which seals rectangular knockouts is sold separately.

- Includes holes to attach 12"W (300 mm) Cable Runway in parallel (side-to-side) orientation at the front or rear of the cabinet using the Cable Runway Elevation Kit (P/N 10506-712 or 10506-716), sold separately; the holes are covered with plugs
- The Vertical Exhaust Duct top panel is solid with two rectangular cable knockouts (front corners) and one large rectangular opening (rear center) for the Vertical Exhaust Duct; one of the 2.8" (71 mm) diameter round knockouts is removed from each corner and a grommet is included to seal the knockouts; order additional grommets (P/N 35021-000) or the brush seal (P/N 25190-001) separately
- Equipment Support:
 - Two pairs of equipment mounting rails in the cabinet
 - Adjustable depth, rails slide front-to-rear; marks on frame for easy alignment
 - 1.75"H (44.45 mm) U spacing, marked and numbered bottom-to-top on all rails
 - 19"W, Universal 5/8 inch – 5/8 inch – 1/2 inch (15.9 mm – 15.9 mm – 12.7 mm) vertical hole spacing complies with EIA/ECA-310-E
 - Square punched holes that accept cage nuts
 - Includes 25 each M6 cage nuts and screws
 - Includes attachment points for accessory snap on Cable Ring Kits, order separately
- Load Capacity:
 - 3000 lb (1360 kg), static load on leveling feet
 - 2250 lb (1020 kg), rolling on casters
 - 2000 lb (907.2 kg), shipping on shock pallet
- Grounding/Bonding:
 - Mounting rails, top panel, side panels and doors are electrically bonded to the cabinet frame
 - A mounting location for a ground lug is provided on the cabinet frame
- PDU Brackets:
 - Includes one pair of L-shaped brackets and installation hardware
 - Attaches to the frame corner posts, 4.3" (109 mm) wide, requires a minimum 6.75" (172 mm) equipment mounting rail setback
 - Supports CPI vertical PDUs or Power Strips for cabinets that are 68.5"H (1740 mm) or 70.5"H (1791 mm) with tool-less attachment points located either 64.75" (1645 mm) or 61.25" (1556 mm) apart
 - Supports two 2.0"W (51 mm) or narrower PDUs side-by-side or one 4.5"W (114 mm) PDU
- Certifications:
 - UL Listed 60950, NWIN, File #E227626
- Material:
 - Steel
- Construction:
 - Welded/bolted frame, mounting rails bolt to frame
- Finish:
 - Epoxy-polyester hybrid powder coat in black



OPTIONAL ACCESSORIES:



Snap-In Filler Panel

Use Snap-In Filler Panels to seal any open rack-mount spaces in the cabinet. Snap-In Filler Panels combine with Rail Seal Kit or Snap-In Grommet & Plug Kit to create a one-way airflow pathway within the cabinet that separates hot and cold air. Snap-In Filler Panels are available in 1U and 2U versions.

Part Number	Description	Shipping Weight lb (kg)
34537-001	1U x 19" EIA, Pack of 6	4 (1.8)
34538-001	2U x 19" EIA, Pack of 6	4 (1.8)

Color is Black.



Baying Seal Kit

The Baying Seal Kit is used to seal the gap between 600 mm cabinets (of the same height and depth) when they are centered on 24" (610 mm) floor tiles. The kit includes six snap-in plastic seals; three that seal the front gap and three that seal the rear gap. Baying Seal Kit works with or without side panels. No hardware required.

Part Number	Description in (mm)	Shipping Weight lb (kg)
25242-700	For 42U Cabinets	5 (2.3)
25242-701	For 45U Cabinets	5 (2.3)
25242-702	For 48U Cabinets	5 (2.3)

Color is Black.

ORDERING INFORMATION

Use the part number matrices below to select a GF-Series GlobalFrame Cabinet. Choose the Height, Width, Depth, Side Panels and Configuration to form a part number. Example Part Number: GF-1A220

Standard Cabinets:

- Supports front-to-rear airflow for hot aisle/cold aisle or enclosed aisle environments
- 30 frame sizes available - three heights, three widths, four depths
- Includes a cabinet frame, two pairs of 19" EIA square-punched equipment mounting rails, a top panel, a perforated metal front door, a double perforated metal rear door, swing handle latches, keyed locks, casters, leveling feet, floor attachment brackets and baying kit
- Supports 3000 lb (1360 kg) static load on leveling feet; 2250 lb (1020 kg) "rolling" load on casters
- Color is black.

	Height				Width			Depth			Side Panels		Configuration	
		in	mm	U		in	mm		in	mm	Description	Description		
GF-	1	79.3	2013	42U	A	23.6	600	2	39.4	1000	0	No Sides	0	Standard Top Panel/Standard Pallet
	2	84.5	2147	45U	B	29.5	750	3	41.3	1050	1	One Side		
	3	89.8	2280	48U				4	47.2	1200	2	Two Sides		

	Height				Width			Depth			Side Panels		Configuration	
		in	mm	U		in	mm		in	mm	Description	Description		
GF-	1	79.3	2013	42U	C	31.5	800	1	31.5	800	0	No Sides	0	Standard Top Panel/Standard Pallet
	2	84.5	2147	45U				2	39.4	1000	1	One Side		
	3	89.8	2280	48U				3	41.3	1050	2	Two Sides		
								4	47.2	1200				



Standard Cabinets with Shock Pallet:

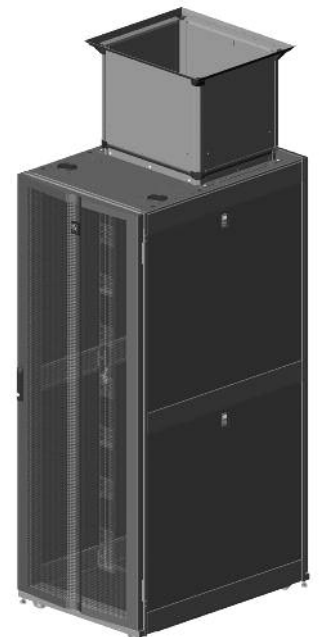
- Ship the cabinet with equipment pre-installed for faster equipment deployment
- 8 frame sizes available - two heights, two widths, two depths
- Includes a cabinet frame, two pairs of 19" EIA square-punched equipment mounting rails, a top panel, a perforated metal front door, a double perforated metal rear door, swing handle latches, keyed locks, casters, leveling feet, floor attachment brackets and baying kit
- Ships on a shock pallet with reusable carton and wood unloading ramp
- Supports 2000 lb (907.2 kg) shipping load on shock pallet
- Supports 3000 lb (1360 kg) static load on leveling feet; 2250 lb (1020 kg) "rolling" load on casters
- Color is black.

	Height				Width			Depth			Side Panels		Configuration	
		in	mm	U		in	mm		in	mm	Description	Description		
GF-	1	79.3	2013	42U	A	23.6	600	3	41.3	1050	0	No Sides	3	Standard Top Panel/Shock Pallet
	2	84.5	2147	45U	B	29.5	750	4	47.2	1200	1	One Side		
											2	Two Sides		

High-Density Cabinets with Vertical Exhaust Duct:

- Isolates hot exhaust air; supports front-to-top airflow with the Vertical Exhaust Duct
- 18 frame sizes to choose from - three heights, three widths, two depths
- Includes a cabinet frame, two pairs of 19" EIA square-punched equipment mounting rails, a Vertical Exhaust Duct and top panel, a Bottom Panel, a perforated metal front door, a solid metal rear door, a rear door sealing kit, swing handle latches, keyed locks, casters, leveling feet, floor attachment brackets and baying kit
- Supports 3000 lb (1360 kg) static load on leveling feet; 2250 lb (1020 kg) "rolling" load on casters
- Color is black.

	Height				Width			Depth			Side Panels		Configuration	
		in	mm	U		in	mm		in	mm	Description	Description		
GF-	1	79.3	2013	42U	A	23.6	600	3	41.3	1050	0	No Sides	1	Vertical Exhaust Duct, 20" - 34"H (508 mm - 863 mm)/Standard Pallet
	2	84.5	2147	45U	B	29.5	750	4	47.2	1200	1	One Side	2	Vertical Exhaust Duct, 34" - 60"H (863 mm - 1523 mm)/Standard Pallet
	3	89.8	2280	48U	C	31.5	800				2	Two Sides		



Ordering Notes:

- Height: Three heights are available: 42U, 45U and 48U. Heights are listed as rack-mount units (U). See DIMENSIONS for overall height dimensions.
- Width: Three widths are available: 600 mm, 750 mm and 800 mm. The cabinet includes equipment mounting rails spaced for 19" EIA (482.6 mm) rack-mount equipment.
- Depth: Four depths are available: 800 mm, 1000 mm, 1050 mm and 1200 mm. Doors add approximately 1" (25 mm) to depth. See DIMENSIONS for details.
- Side Panels: Select the number of solid side panels to include with the cabinet.
- Configuration/Pallet: There are two configurations and two pallet options.
 - Select standard cabinets when deploying in hot aisle/cold aisle installations or where aisle containment will be employed.
 - Select the shock pallet when cabinets will be pre-loaded with equipment at a factory integration site prior to final shipment to the customer site. Note that the cabinet's load capacity is limited to 2000 lb (907.2 kg) when equipment is shipped installed using shock pallet.
 - Select high density cabinets with Vertical Exhaust Duct Systems when deploying in facilities with isolated return air containment.

DIMENSION TABLES

Height Dimensions - in (mm)			
Rail Height	42U	45U	48U
Overall Height, Casters included	79.3 (2013)	84.5 (2147)	89.8 (2280)
Frame Opening, Front	73.9 (1876)	79.1 (2010)	84.4 (2143)

Overall Height dimensions do not include the Vertical Exhaust Duct. The Vertical Exhaust Duct is available in two height ranges; 20"-34"H (508 mm - 863 mm) or 34"-60"H (863 mm - 1523 mm).

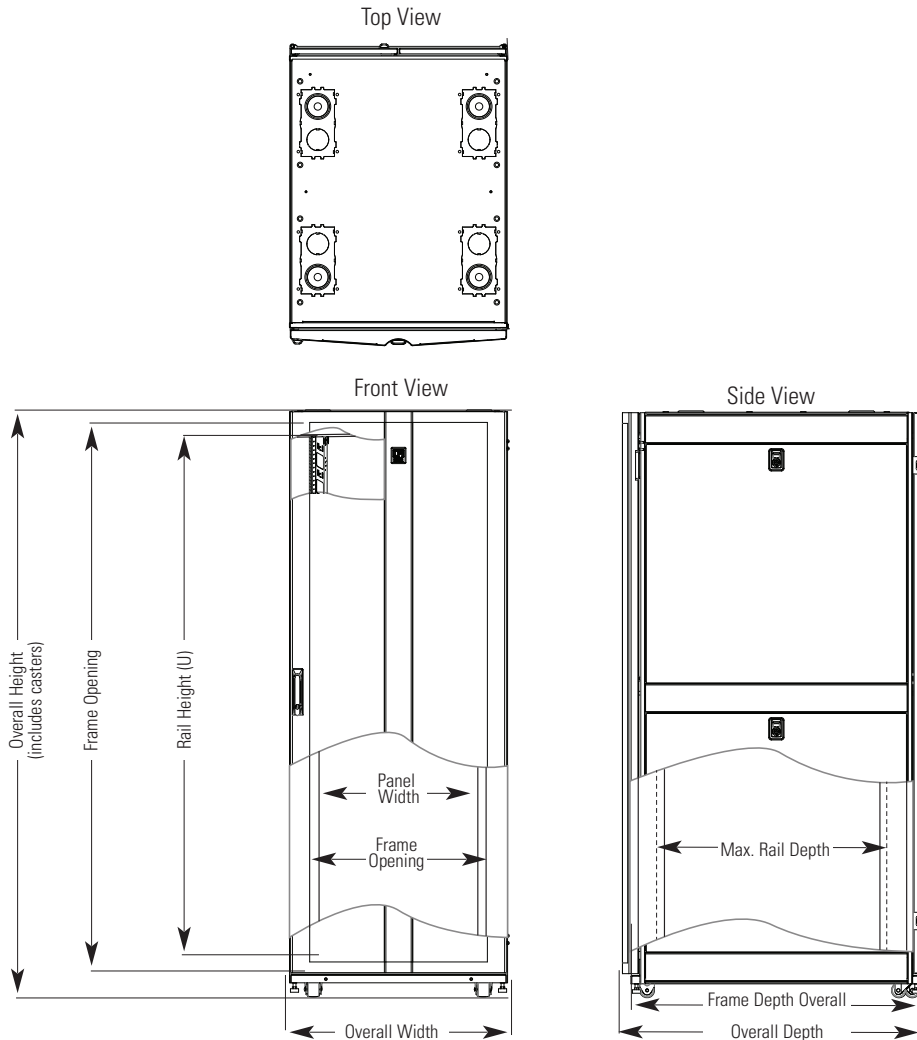
Width Dimensions - in (mm)			
Nominal Width	600 mm	750 mm	800 mm
Overall Width	23.6 (600)	29.5 (750)	31.5 (800)
Frame Opening, Front	20.0 (508)	25.9 (658)	27.9 (708)
Panel Width	19" EIA (482.6 mm)	19" EIA (482.6 mm)	19" EIA (482.6 mm)

Depth Dimensions - in (mm)				
Nominal Depth	800 mm	1000 mm	1050 mm	1200 mm
Overall Depth with Doors ¹	32.7 (831)	40.3 (1024)	42.3 (1074)	48.4 (1229)
Frame Depth, At Base, No Doors ²	31.5 (800)	39.4 (1000)	41.3 (1050)	47.2 (1200)
Min./Max. Rail Depth, 600 mm Cabinet ³	N/A	7.2 (183) / 34.6 (879)	7.2 (183) / 36.6 (929)	7.2 (183) / 42.5 (1079)
Min./Max. Rail Depth, 750 / 800 mm Cabinets ³	6.8 (173) / 26.3 (668)	6.8 (173) / 34.2 (868)	6.8 (173) / 36.1 (918)	6.8 (173) / 42.0 (1068)

Dimension Notes:

- Doors add approximately 1.0" (25 mm) to the frame depth of the cabinet. The front door is 2.2"D (56 mm) and adds approximately 1" (25 mm) to the frame depth. The rear door is approximately 1.0"D (25 mm) and does not add to the frame depth. See note 2.
- Depth at the base of the cabinet frame is 2.5" (64 mm) more than depth at the frame uprights. There is a 1.25" (32 mm) threshold on the front and rear of the cabinet that provides easy access to leveling feet. When installed, the front and rear doors cover this threshold. Frame uprights (corner posts) are approximately 2.9" (74 mm) deep.
- When adjusted to maximum depth, mounting rails wrap around the frame uprights (corner posts). Note: Cable Ring Kits cannot be attached to the rails when they are set to maximum depth.

DIMENSIONAL DRAWINGS:

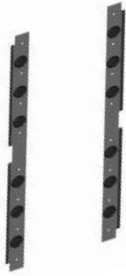


ORDERING INFORMATION

Thermal Management Accessories:

Enhance thermal performance by controlling airflow through the cabinet using the following accessories.

Rail Seal Kit

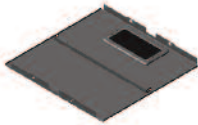


Use Rail Seal Kit on the cabinet's front pair of equipment mounting rails with Snap-In Filler Panels to create a front/rear (cold/hot) airflow barrier within the cabinet. Each Rail Seal Kit includes four half-height panels, edge seal and installation hardware. Each panel has three round 2.8" (71 mm) diameter cable grommets that align with cable openings in the mounting rail. Select to match cabinet width and rail height. The Rail Seal Kit cannot be used with Cable Ring Kits.

Part Number		Description	Shipping Weight lb (kg)
750 mm	800 mm		
25250-700	25252-700	For 42U Cabinets	21 (9.5)
25250-701	25252-701	For 45U Cabinets	22 (10.0)
25250-702	25252-702	For 48U Cabinets	23 (10.4)

Color is Black. Shipping Weights are for 800 mm part numbers.

Bottom Panel

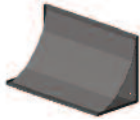


The Bottom Panel prevents airflow from entering the bottom of the cabinet. The Bottom Panel has one 8.8"W x 3.9"D (224 mm x 99 mm) brush-sealed cable access port located near the rear center of the panel. Bottom panel is included with High-Density Cabinets with Vertical Exhaust Duct.

Part Number			Description	Shipping Weight lb (kg)
600 mm	750 mm	800 mm		
N/A	N/A	25130-708	For 800 mm D Cabinets	19 (8.6)
25130-701	25130-705	25130-709	For 1000 mm D Cabinets	23 (10.4)
25130-702	25130-706	25130-710	For 1050 mm D Cabinets	24 (10.9)
25130-703	25130-707	25130-711	For 1200 mm D Cabinets	27 (12.2)

Color is Black. Shipping Weights are for 800 mm part numbers.

Airflow Director



Use in a cabinet with high heat load (>15 kW) that has a Vertical Exhaust Duct top panel. It attaches to the cabinet frame and provides a curved surface that redirects exhaust airflow from servers mounted near the bottom of the cabinet towards the duct at the top of the cabinet. Select to match cabinet width.

Part Number		Description	Shipping Weight lb (kg)
600 mm	750 & 800 mm		
25150-701	25150-702	Airflow Director	8 (3.6)

Color is Black. Shipping Weights are for 750 mm part numbers.

Fan Top Panel Kit

The Fan Top Panel Kit is used to replace the standard top panel and provides additional exhaust airflow through the top of the cabinet. Two fan housings are mounted on the bottom of the panel. Each fan housing has two 4.5" (114 mm) diameter fans capable of 100 CFM (170 CMH) each and an IEC C14 connector. The kit includes a detachable 15'L (5 m) power cord with dual C13 connectors for the fan housings and a molded NEMA 5-15P plug (115 VAC) or C14 (230 VAC) connector. Order two C13 power cords separately if different power connections are required. Select to match local voltage and the width and depth of the cabinet.

Part Number			Description	Shipping Weight lb (kg)
600 mm	750 mm	800 mm		
115 VAC Fans, NEMA 5-15P Plug				
N/A	N/A	25088-708	For 800 mm D Cabinets	25 (11.3)
25088-701	25088-705	25088-709	For 1000 mm D Cabinets	29 (13.2)
25088-702	25088-706	25088-710	For 1050 mm D Cabinets	31 (14.1)
25088-703	25088-707	25088-711	For 1200 mm D Cabinets	34 (15.4)
230 VAC Fans, IEC C14 Connector				
N/A	N/A	25088-728	For 800 mm D Cabinets	25 (11.3)
25088-721	25088-725	25088-729	For 1000 mm D Cabinets	29 (13.2)
25088-722	25088-726	25088-730	For 1050 mm D Cabinets	31 (14.1)
25088-723	25088-727	25088-731	For 1200 mm D Cabinets	34 (15.4)

Color is Black. Shipping Weights are for 800 mm part numbers.

Snap-In Grommet & Plug Kit



The Snap-In Grommet & Plug Kit includes 14 individual snap-in grommets and covers that seal the openings in 750 mm and 800 mm wide equipment mounting rails. Each rail has seven openings; one kit will seal the openings in two equipment mounting rails. Use one kit to seal all of the openings on the front pair of equipment mounting rails to support front-to-rear airflow. The Snap-In Grommet & Plug Kit cannot be used with Rail Seal Kit (P/Ns 25250-70X or 25252-70X).

Part Number	Description	Shipping Weight lb (kg)
25108-001	For 750 & 800 mm Cabinets	2 (0.9)

Color is Black.

Cable Port Brush Kit



The Cable Port Brush Kit is used to cover the large cable knockouts in the cabinet's top panel. Each kit includes two 3.9"W x 8.8"D (99 mm x 224 mm) brush-sealed grommets that snap into the opening on the top panel once the large 4.5"W x 9.0"D (114 mm x 228 mm) knockout is removed. The split design also allows the grommet to be temporarily removed to pass large three-phase 60 Amp PDU power plugs up to 4.5"W (114 mm) in diameter through the knockout when PDUs are added or removed. The standard top panel and accessory fan top panels have four large cable knockouts. The Vertical Exhaust Duct top panel has two large cable knockouts.

Part Number	Description	Shipping Weight lb (kg)
25190-001	Pack of 2	2 (0.9)

Color is Black.

Cable Port Grommet Kit

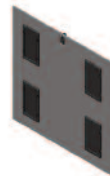


The Cable Port Grommet Kit is used to cover the round cable knockouts in the cabinet's top panel. Each kit includes two 2.8" (71 mm) diameter grommets that snap into the opening in the top panel once the knockout is removed. The standard top panel and accessory fan top panels have eight round cable knockouts each (two per corner), four include grommets. The Vertical Exhaust Duct top panel has four round cable knockouts each (two per corner, front corners only), two include grommets.

Part Number	Description in (mm)	Shipping Weight lb (kg)
35021-000	2.8 (71) Grommets, 2 Each	2 (0.9)

Color is Black.

Brush Side Panel



The Brush Side Panel replaces a solid side panel and covers one side of a cabinet. It includes two half-height solid side panels. Each half-height panel has four 8.8"H x 3.9"W (224 mm x 99 mm) brush-sealed cable access ports, one per corner, a single locking latch and a connection point for a grounding and bonding strap (included with the cabinet). Select the side panel to match the height and depth of the cabinet.

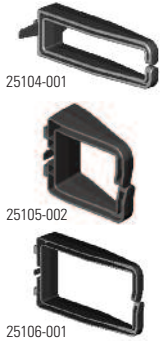
Part Number Cabinet Height			Description	Shipping Weight lb (kg)
42U	45U	48U		
25037-700	25037-704	25037-708	For 800 mm D Cabinets	38 (17.2)
25037-701	25037-705	25037-709	For 1000 mm D Cabinets	47 (21.3)
25037-702	25037-706	25037-710	For 1050 mm D Cabinets	49 (22.2)
25037-703	25037-707	25037-711	For 1200 mm D Cabinets	55 (24.9)

Color is Black. Shipping Weights are for 48U part numbers.

ORDERING INFORMATION

Cable Management Accessories:

Keep network, KVM and power cables separate and organized using the following cable management accessories.



Cable Ring Kit

The Cable Ring Kit includes eight plastic D-rings that snap onto the equipment mounting rails inside the cabinet creating a vertical pathway for cables. Each rail can support eight rings. Select the kit to match cabinet width. There are two ring sizes (depths) for the 750 mm and 800 mm wide cabinets. Mounting rails in the 600 mm wide cabinet must be setback a minimum of 5.5" (140 mm) to provide clearance for the cable rings. Mounting rails in the 750 mm and 800 mm wide cabinets must be setback a minimum of 5.0" (127 mm) to provide clearance for medium cable rings and 10.0" (254 mm) to provide clearance for large cable rings. Cable Ring Kit cannot be used with Vertical Cable Managers (P/Ns 25110-70X, 25120-70X) or Rail Seal Kit (P/Ns 25250-70X, 25252-70X).

Part Number	Description W x D - in (mm)	Shipping Weight lb (kg)
25104-001	Rings For 600 mm Cabinets, Black 1.7 x 5.0 (43 x 127), Outside, 1.0 x 4.4 (25 x 112), Inside	2 (0.9)
25105-002	Medium Rings For 750 mm Cabinets, Black 4.5 x 4.7 (114 x 119), Outside- 3.2 x 3.5 (81 x 89), Inside	3 (1.4)
25106-002	Medium Rings For 800 mm Cabinets, Black 5.5 x 4.7 (140 x 119), Outside - 4.2 x 3.5 (107 x 89), Inside	3 (1.4)
25105-001	Large Rings For 750 mm Cabinets, Black 4.5 x 9.8 (114 x 249), Outside - 3.2 x 8.6 (81 x 218), Inside	5 (2.3)
25106-001	Large Rings For 800 mm Cabinets, Black 5.5 x 9.8 (140 x 249), Outside - 4.2 x 8.6 (107 x 218), Inside	6 (2.7)



Cable Ring Manager

The Cable Ring Manager is a vertical cable manager with plastic D-rings that attaches directly to the cabinet's frame independent of the equipment mounting rails. The Cable Ring Manager is available for 750 mm and 800 mm wide cabinets. The manager includes two half-height panels, eight plastic D-rings and installation hardware. Each panel for the 750 mm wide cabinet includes four 4.5"W x 4.7"D (114 mm x 119 mm) medium or 4.5"W x 9.8"D (114 mm x 249 mm) large rectangular plastic D-rings to manage cables and three 2.8" (71 mm) diameter round edge protected cable pass through ports. Each panel for the 800 mm wide cabinet includes four 5.5"W x 4.7"D (140 mm x 119 mm) medium or 5.5"W x 9.8"D (140 mm x 249 mm) large rectangular plastic D-rings to manage cables and three 5.5"H x 3.25"W (140 mm x 83 mm) rectangular edge protected cable pass through ports with snap-on covers. The managers are with medium rings are 5.8"D (150 mm) and the managers with large rings 10.9"D (277 mm). Managers with medium rings require a minimum 6" (153 mm) rail setback and managers with large rings require a 11.5" (293 mm) rail setback.

Part Number		Description	Shipping Weight lb (kg)
750 mm	800 mm		
25103-703	25102-703	Medium Rings For 42U Cabinets	13 (5.9)
25103-704	25102-704	Medium Rings For 45U Cabinets	14 (6.4)
25103-705	25102-705	Medium Rings For 48U Cabinets	15 (6.8)
25103-700	25102-700	Large Rings For 42U Cabinets	15 (6.8)
25103-701	25102-701	Large Rings For 45U Cabinets	16 (7.3)
25103-702	25102-702	Large Rings For 48U Cabinets	17 (7.7)

Color is Black. Shipping Weights are for 800 mm part numbers.

Snap-In Grommet Kit

The Snap-In Grommet Kit includes fourteen individual 5.5"H x 3.25"W (140 mm x 83 mm) grommets that protect cables from the edges of the openings in the equipment mounting rails in 750 mm and 800 mm wide cabinets. Each rail has seven openings; one kit will protect the openings in two equipment mounting rails. The Snap-In Grommet Kit cannot be used with the Rail Seal Kit (P/Ns 25250-70X or 25252-70X).



Part Number	Description	Shipping Weight lb (kg)
25107-001	For 750 or 800 mm Cabinets	1 (0.5)

Color is Black.



Cable Lashing Bracket Kit

The Cable Lashing Bracket Kit attaches to the cabinet frame and provides multiple tie points for cables. Secure cables to the bracket using Saf-T-Grip Straps or cable ties. The kit includes two half-height brackets with U-shaped cable tie points and installation hardware. Select from two widths. The 5" (125 mm) wide version has two vertical columns of tie points for cables and requires a 6.75" (172 mm) rail setback. The 10" (250 mm) wide version has three vertical columns of tie points for cables and requires an 11.75" (299 mm) rail setback.

Part Number		Description	Shipping Weight lb (kg)
5"W (125 mm)	10"W (250 mm)		
25221-701	25221-702	For 42U Cabinets	16 (7.3)
25221-703	25221-704	For 45U Cabinets	17 (7.7)
25221-705	25221-706	For 48U Cabinets	18 (8.2)

Color is Black. Shipping Weights are for 10"W (250 mm).



Full Height PDU Bracket

The Full Height PDU Bracket attaches to the cabinet frame and provides two attachment points for CPI vertical power distribution units (PDUs) or power strips for cabinets and multiple tie points for power cables. Secure cables to the bracket using Saf-T-Grip Straps or cable ties. Use with CPI vertical PDUs for cabinets that are 68.5"H (1740 mm) or 70.5"H (1791 mm). Tool-less PDU attachment points are located 64.75" (1645 mm) and 61.25" (1556 mm) apart. The bracket supports two 2.4"W (61 mm) or narrower PDUs or power strips side-by-side or one 4.9"W (124 mm) PDU. The bracket is 5.2" (132 mm) wide and requires a minimum 7.5" (191 mm) rail setback in 600 mm wide cabinets and a minimum 7.25" (185 mm) rail setback in other cabinets. Select to match cabinet height.

Part Number	Description	Shipping Weight lb (kg)
25141-700	For 42U Cabinets	10 (4.5)
25141-701	For 45U Cabinets	10 (4.5)
25141-702	For 48U Cabinets	11 (5.0)

Color is Black.



Vertical Cable Manager

The Vertical Cable Manager attaches to the cabinet's equipment mounting rails and provides vertical cable management with plastic T-shaped cable guides and openings that align with each rack-mount space/unit (U) in the cabinet to organize patch cords. The manager for the 600 mm wide cabinet includes fingers only and can be used in any cabinet. The manager for the 750 mm or 800 mm wide cabinet is available in two depths with standard or extended fingers and also includes a cover that partially encloses cables. Standard Fingers require a 7" (178 mm) rail setback. Extended Fingers require a 9.25" (235 mm) rail setback. Vertical Cable Managers cannot be used with Cable Ring Kit. Select to match cabinet width.

Vertical Cable Manager with Standard Fingers				
Part Number			Description	Shipping Weight lb (kg)
600 mm	750 mm	800 mm		
25110-700	25404-703	25404-706	For 42U Cabinets	15 (6.8)
25110-701	25404-704	25404-707	For 45U Cabinets	16 (7.3)
25110-702	25404-705	25404-708	For 48U Cabinets	16 (7.3)
Vertical Cable Manager with Extended Fingers				
N/A	25120-703	25120-706	For 42U Cabinets	19 (8.6)
N/A	25120-704	25120-707	For 45U Cabinets	20 (9.1)
N/A	25120-705	25120-708	For 48U Cabinets	21 (9.5)

Color is Black. Shipping Weights are for 800 mm part numbers.

