

# Product Information Sheet

## LARGE WIRELESS WALL-MOUNT ENCLOSURE



### TELECOMMUNICATION ENCLOSURES

The AAT-WME-P is a wall mounted enclosure for wireless transmitters designed for warehouse, manufacturing/light industrial and exterior use. AAT-WME-P is constructed of rugged dust and weather-resistant fiberglass reinforced polyester. A single front door provides access to equipment. The door is attached with a continuous steel hinge and secured by padlock through two stainless steel padlock hasps. A gasket seals the interior at closure.

AAT-WME-P measures 15-1/2" high by 13-1/2" wide by 6" deep. It includes a removable interior back plate pre-drilled for a variety of wireless transmitters (listed below). AT-WME-P is UL Listed and NEMA rated for indoor/outdoor use. No fire-foam sealing kit is supplied. AAT-WME-P is a completely sealed enclosure. The customer must provide and install cable access and installation hardware to fit the application.

#### ■ Cable Entry/Exit

- Enclosure is completely sealed, customer drills hole to fit application

#### ■ Equipment Support

- Removable interior back plate measures 13-1/4"L x 11-1/8"W and is pre-drilled for wireless transmitters
- The interior of the enclosure is 5" deep
- Maximum equipment size is 13-1/2" x 11-1/2" x 5"
- Secure enclosure with (2) padlocks, 3/8" maximum shackle diameter, not included

#### ■ Materials

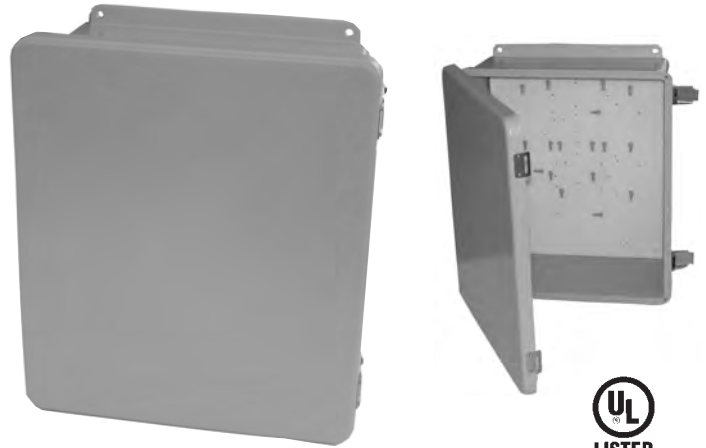
- Enclosure: fiberglass reinforced polyester
- Back plate: acrylic plastic
- Hinge & Padlock Hasp: stainless steel

#### ■ Packaging

- 1 Enclosure/Carton

#### ■ Approvals

- UL Listed - for use with industrial equipment in ordinary locations
- NEMA 1, 2, 3, 3R, 4, 4X, 12 & 13



Part Number	Description	Shipping Weight
AAT-WME-P	Wall-Mount Wireless Box	10 lb (4.5 kg)

#### ■ Specifications

- Enclosure: 15-1/2"H x 13-1/2"W x 6"D
- Product Weight: 7.5 lb

#### ■ Installation

- Customer must provide threaded rod and installation hardware

800-834-4969 U.S. & Canada • [www.chatsworth.com](http://www.chatsworth.com)



CHATSWORTH PRODUCTS, INC.

©2009 Chatsworth Products, Inc. All rights reserved. CPI, CPI Passive Cooling, Saf-T-Grip, Seismic Frame, SlimFrame and MegaFrame are federally registered trademarks of Chatsworth Products, Inc. Cube-IT Plus, Evolution, OnTrac, QuadraRack, Simply Efficient and TeraFrame are trademarks of Chatsworth Products, Inc. All other trademarks belong to their respective companies.Rev.2 03/09