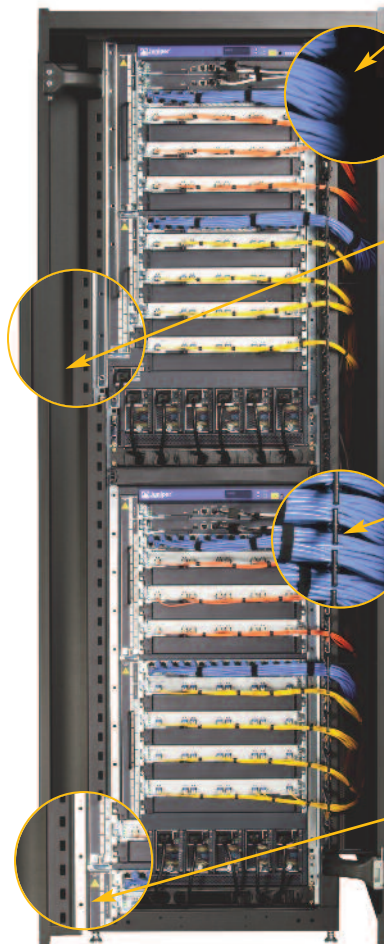
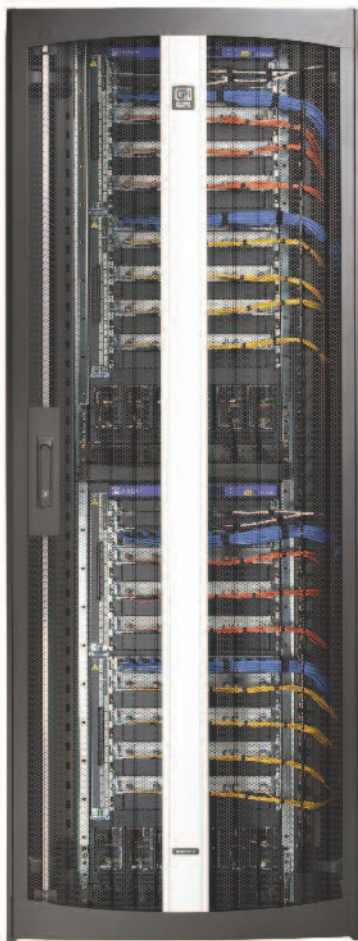


PRODUCT APPLICATION

The N-Series TeraFrame® Network Cabinet For Juniper EX8200 Line of Ethernet Switches

The N-Series TeraFrame® Network Cabinet by Chatsworth Products, Inc. (CPI) provides a complete storage solution for the Juniper Networks EX8208 and EX8216 Ethernet switches. The Juniper Networks EX8200 line of Ethernet switches are high-density, high-performance modular platforms that provide 10 Gigabit Ethernet network connections for servers and access switches. The N-Series is designed specifically to support modular network switches and network cabling, has the following key features:



- **Extra Space for Airflow and Cables** – The N-Series features offset doors and side panels which create an open space around the switch for increased airflow and easy access to equipment and cabling. You can quickly add or swap a line card, fan tray or power supply, and it is easy to trace cables.
- **Thermal Management** – The network modules and line cards in the EX8200 Ethernet switches are cooled by right-to-left airflow through the switch chassis. Hot exhaust air from the side of the switch is captured and removed from the cabinet by an integrated Network Switch Exhaust Duct, allowing you to place cabinets in hot/cold aisles with full support for front-to-rear airflow.
- **Cable Management** – Cables enter the switch from the right side only so the vertical fan tray on the left side of the switch is always accessible. The N-Series includes snap-on plastic T-shaped Cable Management Fingers which have openings that align with each rack-mount unit so you can organize cables by line card. Cable access ports around the perimeter of the top panel let you easily route cables to other cabinets.
- **Equipment Support** – The N-Series can safely support up to three EX8208 switches or two EX8216 switches. Two pairs of 19" EIA equipment mounting rails provide front and rear support and 45U of vertical mounting space for equipment. The N-Series cabinet supports up to 2,500 lb (1134 kg) of equipment.

N-Series TeraFrame® Network Cabinet
front view, shown with door on and door off,
populated with Juniper EX8216
Ethernet Switches



CHATSWORTH PRODUCTS, INC.

+1-800-834-4969

techsupport@chatsworth.com
www.chatsworth.com

KEY ACCESSORIES

1 Snap In Filler Panels

Seal any open (unused) rack-mount unit spaces to block airflow between equipment. Panels feature a tool-less, easy-to-attach design that snaps into the mounting holes on the mounting rail.

2 Rack-Mount Cable Shelf

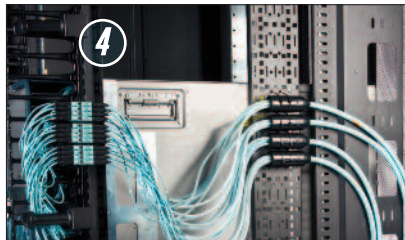
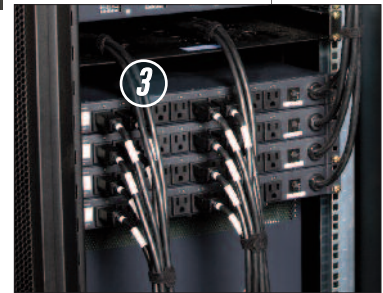
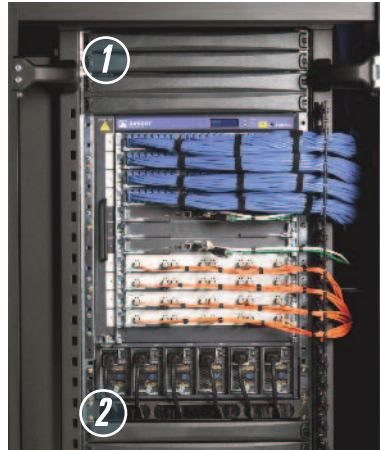
Easily route cables front to rear. Shelf uses 1U, fits mounting rails spaced 22" (560 mm) to 40" (1020 mm) deep, and features three brush-sealed cable openings on the front panel.

3 Power Strips

Deliver power to equipment with high-voltage and three-phase power strips and reduce the number of individual circuits that must be extended to each cabinet. Models with IP current meters have SNMP alarm capability to integrate with your network management software.

4 Fiber Management

Manage fiber trunk cables and MTP-to-LC jumpers from the Corning Cable Systems Landscape® Pretium™ Zero-U System. High-density MTP connectors let you place connectivity next to the switch without using any rack-mount spaces.



ORDERING INFORMATION

Part Number	Description
NF4M-113C-C42	N-Series TeraFrame Network Cabinet for Juniper EX8208 or EX8216 Ethernet Switches, 800 mm W x 1075 mm D x 45U, Square-Punched Rails, Single- Perforated Metal Front Door, Double- Perforated Metal Rear Door, Two-Point Cam Latch with Keyed Lock, (2) Solid Side Panels, Black

RECOMMENDED ACCESSORIES

Part Number	Description
34537-000	Snap-In Filler Panel, 19"W x 1U, Black
34538-000	Snap-In Filler Panel, 19"W x 2U, Black
13517-701	Rack-Mount Cable Shelf, 19"W x 1U, Black
Power Strips	Contact CPI for assistance
Fiber Management	Contact CPI for assistance

Note: Other options are available.

Not exactly what you need?

Additional products, sizes and configurations are available from CPI. Visit www.chatsworth.com.



N-Series TeraFrame® Network Cabinet populated with Juniper EX8208 Ethernet Switches

