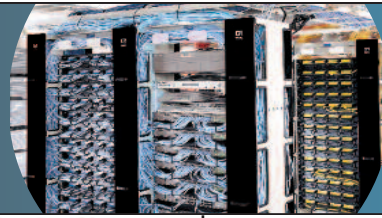




CHATSWORTH PRODUCTS, INC.

Organize.  
Store.  
Secure.™



# Rack Systems



Universal Rack

Standard Racks, 3" & 6" Deep

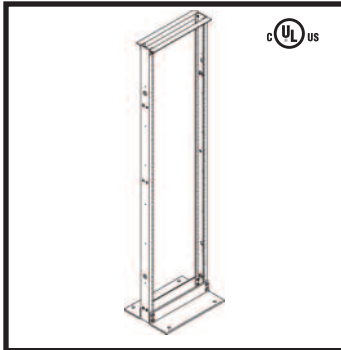
Seismic Frame® Two-Post Rack

QuadraRack® 4-Post & Server Frame

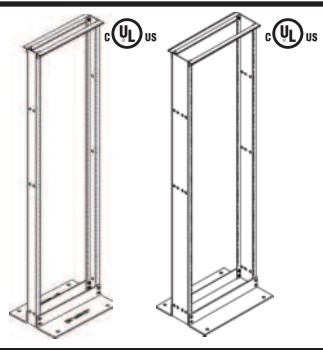
Adjustable QuadraRack® & ServerRack

Adjustable Rail QuadraRack® & ServerRack

<p><b>Applications:</b> Network facilities and data center computer rooms</p>	<p><b>Applications:</b> Network facilities</p>	<p><b>Applications:</b> Network facilities and data center computer rooms</p>	<p><b>Applications:</b> Network facilities</p>	<p><b>Applications:</b> Network facilities and data center computer rooms</p>	<p><b>Applications:</b> Network facilities and data center computer rooms</p>
<p><b>Key Features:</b></p> <ul style="list-style-type: none"> <li>• Threaded rails for quick attachment of network equipment and patch panels</li> <li>• Use with shelves to support large equipment</li> <li>• Fixed position mounting channels</li> <li>• Marked and numbered rack-mount spaces (U)</li> <li>• UL Listed</li> </ul>	<p><b>Key Features:</b></p> <ul style="list-style-type: none"> <li>• Threaded rails for quick attachment of network equipment and patch panels</li> <li>• Use with shelves to support large equipment</li> <li>• Fixed position mounting channels</li> <li>• Marked and numbered rack-mount spaces (U)</li> <li>• UL Listed</li> </ul>	<p><b>Key Features:</b></p> <ul style="list-style-type: none"> <li>• Designed for use in earthquake hazard areas</li> <li>• Meets GR-63-CORE NEBS Zone 4 requirements</li> <li>• Threaded or square-punched mounting rails can be set 6" (150 mm) or 3" (80 mm) apart</li> <li>• Marked and numbered rack-mount spaces (U) with reversible numbering</li> <li>• Integral grounding and bonding system</li> <li>• Built-in attachment points for cable guides and power strips</li> <li>• UL Listed</li> </ul>	<p><b>Key Features:</b></p> <ul style="list-style-type: none"> <li>• QuadraRack 4-Post Frame has threaded rails to support large network switches</li> <li>• QuadraRack Server Frame has square-punched rails to support rack-mount servers</li> <li>• Fixed position mounting channels</li> <li>• Marked rack-mount spaces (U)</li> </ul>	<p><b>Key Features:</b></p> <ul style="list-style-type: none"> <li>• Adjustable QuadraRack has threaded rails to support large network switches</li> <li>• Adjustable ServerRack has square-punched rails to support rack-mount servers</li> <li>• Mounting channels adjust in fixed 25 mm increments</li> <li>• Marked and numbered rack-mount spaces (U)</li> <li>• UL Listed</li> </ul>	<p><b>Key Features:</b></p> <ul style="list-style-type: none"> <li>• Adjustable Rail QuadraRack has threaded rails to support large network switches</li> <li>• Adjustable Rail ServerRack has square-punched rails to support rack-mount servers</li> <li>• Adjustable depth rear mounting rails</li> <li>• Marked and numbered rack-mount spaces (U) with reversible numbering</li> <li>• Integrated grounding and bonding system</li> <li>• UL Listed</li> </ul>
<p><b>Width (2):</b></p> <ul style="list-style-type: none"> <li>• 20.3" (516 mm), 19" EIA</li> <li>• 24.3" (617 mm), 23"</li> </ul>	<p><b>Width:</b> <u>3"D Channel</u></p> <ul style="list-style-type: none"> <li>• 20.3" (516 mm), 19" EIA</li> </ul> <p><u>6"D Channel</u></p> <ul style="list-style-type: none"> <li>• 20.3" (516 mm), 19" EIA</li> <li>• 24.3" (617 mm), 23"</li> </ul>	<p><b>Width (2):</b></p> <ul style="list-style-type: none"> <li>• 24" (610 mm), 19" EIA</li> <li>• 28" (710 mm), 23"</li> </ul>	<p><b>Width (1):</b></p> <ul style="list-style-type: none"> <li>• 20.3" (516 mm), 19" EIA</li> </ul>	<p><b>Width (1):</b></p> <ul style="list-style-type: none"> <li>• 20.3" (516 mm), 19" EIA</li> </ul>	<p><b>Width (1):</b></p> <ul style="list-style-type: none"> <li>• 23.62" (600 mm), 19" EIA</li> </ul>
<p><b>Height (11):</b></p> <ul style="list-style-type: none"> <li>• 6' (1.8 m), 38U</li> <li>• 7' (2.1 m), 45U</li> <li>• 8' (2.4 m), 51U</li> <li>• 9' (2.7 m), 58U</li> </ul> <p><i>Other heights available, contact Tech Support, 800-834-4969</i></p>	<p><b>Height:</b></p> <ul style="list-style-type: none"> <li>• 7' (2.1 m), 45U</li> <li>• 8' (2.4 m), 51U, 3" Deep Only</li> <li>• 9' (2.7 m), 58U, 3" Deep Only</li> </ul>	<p><b>Height (1):</b></p> <ul style="list-style-type: none"> <li>• 7' (2.1 m), 44U</li> </ul>	<p><b>Height (3):</b> 4-Post Frame:</p> <ul style="list-style-type: none"> <li>• 7' (2.1 m), 45U</li> <li>• 8' (2.4 m), 51U</li> <li>• 9' (2.7 m), 58U</li> </ul> <p>Server Frame:</p> <ul style="list-style-type: none"> <li>• 7' (2.1 m), 45U</li> </ul>	<p><b>Height (4):</b></p> <ul style="list-style-type: none"> <li>• 6' (1.8 m), 38U</li> <li>• 7' (2.1 m), 45U</li> <li>• 8' (2.4 m), 51U</li> <li>• 9' (2.7 m), 58U</li> </ul>	<p><b>Height (3):</b></p> <ul style="list-style-type: none"> <li>• 7' (2.1 m), 45U</li> <li>• 8' (2.4 m), 51U</li> <li>• 9' (2.7 m), 58U</li> </ul>
<p><b>Depth (1):</b></p> <ul style="list-style-type: none"> <li>• Overall footprint: 15" (380 mm), 3" (76 mm) mounting channel</li> </ul>	<p><b>Depth:</b> <u>3"D Channel</u>      <u>6"D Channel</u></p> <ul style="list-style-type: none"> <li>• 15" (380 mm)      • 18" (460 mm)</li> </ul>	<p><b>Depth (1):</b></p> <ul style="list-style-type: none"> <li>• Overall footprint: 15" (380 mm), 9.6" (244 mm) channels</li> </ul>	<p><b>Depth (1):</b></p> <ul style="list-style-type: none"> <li>• Overall footprint: 41" (1040 mm), 29" (740 mm) mounting depth</li> </ul>	<p><b>Depth (4 ranges):</b></p> <ul style="list-style-type: none"> <li>• 15.75" to 21.65" (400 to 500 mm)</li> <li>• 22.64" to 28.54" (575 to 725 mm)</li> <li>• 29.53" to 35.43" (750 to 900 mm)</li> <li>• 36.42" to 42.32" (925 to 1075 mm)</li> </ul>	<p><b>Depth (2):</b></p> <ul style="list-style-type: none"> <li>• 23.62" (600 mm)</li> <li>• 35.43" (900 mm)</li> </ul>
<p><b>Equipment Load Bearing Capacity:</b></p> <ul style="list-style-type: none"> <li>• 1500 lb (680.4 kg)</li> </ul>	<p><b>Equipment Load Bearing Capacity:</b></p> <ul style="list-style-type: none"> <li>• 1000 lb (453.6 kg)</li> </ul>	<p><b>Equipment Load Bearing Capacity:</b></p> <ul style="list-style-type: none"> <li>• 1000 lb (453.6 kg)</li> </ul>	<p><b>Equipment Load Bearing Capacity:</b></p> <ul style="list-style-type: none"> <li>• 4-Post Frame: 2000 lb (907.2 kg)</li> <li>• Server Frame: 1000 lb (453.6 kg)</li> </ul>	<p><b>Equipment Load Bearing Capacity:</b></p> <ul style="list-style-type: none"> <li>• 2000 lb (907.2 kg)</li> </ul>	<p><b>Equipment Load Bearing Capacity:</b></p> <ul style="list-style-type: none"> <li>• 2200 lb (1000.0 kg)</li> </ul>
<p><b>Construction:</b></p> <ul style="list-style-type: none"> <li>• Bolted aluminum</li> </ul>	<p><b>Construction:</b></p> <ul style="list-style-type: none"> <li>• Bolted aluminum</li> </ul>	<p><b>Construction:</b></p> <ul style="list-style-type: none"> <li>• Welded steel</li> </ul>	<p><b>Construction:</b></p> <ul style="list-style-type: none"> <li>• Bolted aluminum and steel</li> </ul>	<p><b>Construction:</b></p> <ul style="list-style-type: none"> <li>• Welded and bolted steel</li> </ul>	<p><b>Construction:</b></p> <ul style="list-style-type: none"> <li>• Welded and bolted steel</li> </ul>

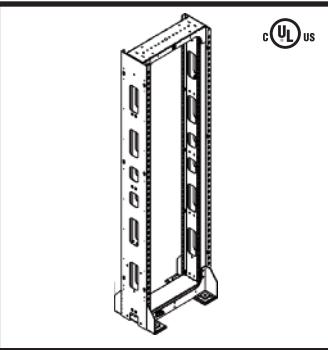


cUL us

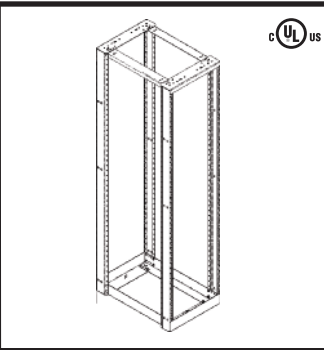
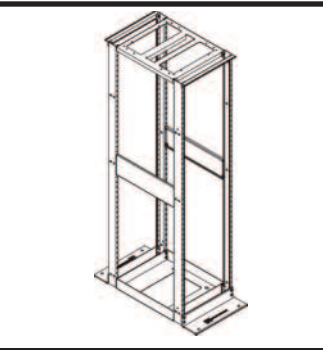


cUL us

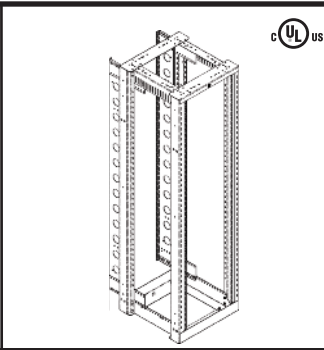
cUL us



cUL us



cUL us



cUL us

**Universal Rack**

**Standard Racks, 3" & 6" Deep**

**Seismic Frame® Two-Post Rack**

**QuadraRack® 4-Post & Server Frame**

**Adjustable QuadraRack® & Server Rack**

**Adjustable Rail QuadraRack® & Server Rack**

Part No.	Description	Wt.
46353-X03	45U x 19"EIA x 3"D (76 mm) channel, 7'H x 20.3"W x 15"D rack (2.1 m x 516 mm x 380 mm)	39 lb 17.7 kg
46353-X15	51U x 19"EIA x 3"D (76 mm) channel, 8'H x 20.3"W x 15"D rack (2.4 m x 516 mm x 380 mm)	41 lb 18.6 kg
46353-X08	58U x 19"EIA x 3"D (76 mm) channel, 9'H x 20.3"W x 15"D rack (2.7 m x 516 mm x 380 mm)	43 lb 19.5 kg

X=color: (-1) for Gray, (-2) for White, (-5) for Grained Aluminum and (-7) for Black. Other sizes available. Contact Tech Support at 800-834-4969 for additional options.

**Key Accessories**

Part No.	Description	Wt.
40604-003	Concrete Slab Install Kit	1 lb/0.5 kg
40607-001	Wood Floor Install Kit	2 lb/0.9 kg
10630-119	16"-22" (410 mm to 560 mm) Raised Floor Kit	20 lb/9.1 kg
40602-X00	Line Up Spacer Kit	1 lb/0.5 kg
40605-001	#12-24 Screws, Zinc, 50	1 lb/0.5 kg
40605-005	#12-24 Screws, Black, 50	1 lb/0.5 kg

Part No.	Description	Wt.
55053-X03	45U x 19"EIA x 3"D (76 mm) channel, 7'H x 20.3"W x 15"D rack (2.1 m x 516 mm x 380 mm)	31 lb 14.1 kg
55053-X15	51U x 19"EIA x 3"D (76 mm) channel, 8'H x 20.3"W x 15"D rack (2.4 m x 516 mm x 380 mm)	37 lb 16.82 kg
55053-X08	58U x 19"EIA x 3"D (76 mm) channel, 9'H x 20.3"W x 15"D rack (2.7 m x 516 mm x 380 mm)	40 lb 18.1 kg
66353-X03	45U x 19"EIA x 6"D (150 mm) channel, 7'H x 20.3"W x 18"D rack (2.1 m x 516 mm x 458 mm)	43 lb 19.5 kg

X=color: (-1) for Gray, (-2) for White, (-5) for Grained Aluminum and (-7) for Black. Other styles and sizes available. Contact Tech Support at 800-834-4969 for additional options.

**Key Accessories**

Part No.	Description	Wt.
40604-003	Concrete Slab Install Kit	1 lb/0.5 kg
40607-001	Wood Floor Install Kit	2 lb/0.9 kg
11762-119	16"-22" (410 mm to 560 mm) Raised Floor Kit	21 lb/9.5 kg
40702-X00	Line Up Spacer Kit	1 lb/0.5 kg
40605-001	#12-24 Screws, Zinc, 50	1 lb/0.5 kg
40605-005	#12-24 Screws, Black, 50	1 lb/0.5 kg

Part No.	Description	Wt.
13853-X03	44U x 19"EIA x 6"D (150 mm) rails, 7'H x 24"W x 15"D rack (2.1 m x 610 mm x 380 mm) Tapped #12-24 Zinc Rails	180 lb 81.6 kg
13854-X03	44U x 19"EIA x 6"D (150 mm) rails, 7'H x 24"W x 15"D rack (2.1 m x 610 mm x 380 mm) Square-Punched Zinc Rails	178 lb 80.7 kg
13855-X03	44U x 19"EIA x 6"D (150 mm) rails, 7'H x 24"W x 15"D rack (2.1 m x 610 mm x 380 mm) Tapped #12-24 Painted Rails	180 lb 81.6 kg
13856-X03	44U x 19"EIA x 6"D (150 mm) rails, 7'H x 24"W x 15"D rack (2.1 m x 610 mm x 380 mm) Square-Punched Painted Rails	178 lb 80.7 kg
13883-X03	44U x 23"W x 6"D (150 mm) rails, 7'H x 28"W x 15"D rack (2.1 m x 710 mm x 380 mm) Tapped #12-24 Zinc Rails	180 lb 81.6 kg
13884-X03	44U x 23"W x 6"D (150 mm) rails, 7'H x 28"W x 15"D rack (2.1 m x 710 mm x 380 mm) Square-Punched Zinc Rails	178 lb 80.7 kg
13885-X03	44U x 23"W x 6"D (150 mm) rails, 7'H x 28"W x 15"D rack (2.1 m x 710 mm x 380 mm) Tapped #12-24 Painted Rails	180 lb 81.6 kg
13886-X03	44U x 23"W x 6"D (150 mm) rails, 7'H x 28"W x 15"D rack (2.1 m x 710 mm x 380 mm) Square-Punched Painted Rails	178 lb 80.7 kg

Part No.	Description	Wt.
50120-X03	45U x 19"EIA x 29"D (740 mm) channels, 7'H x 20.3" x 41"D frame (2.1 m x 516 mm x 1042 mm)	65 lb 29.5 kg
50120-X15	51U x 19"EIA x 29"D (740 mm) channels, 8'H x 20.3" x 41"D frame (2.4 m x 516 mm x 1042 mm)	67 lb 30.4 kg
50120-X08	58U x 19"EIA x 29"D (740 mm) channels, 9'H x 20.3" x 41"D frame (2.7 m x 516 mm x 1042 mm)	69 lb 31.3 kg

Part No.	Description	Wt.
15215-X03	45U x 19"EIA, 7'H x 20.3"W x 15.75" to 21.65"D, (2.1 m x 516 mm x 400 to 550 mm)	89 lb 40.4 kg
15216-X03	45U x 19"EIA, 7'H x 20.3"W x 22.64" to 28.54"D, (2.1 m x 516 mm x 575 to 725 mm)	93 lb 42.2 kg
15217-X03	45U x 19"EIA, 7'H x 20.3"W x 29.53 to 35.43"D, (2.1 m x 516 mm x 750 to 900 mm)	97 lb 44.0 kg
15218-X03	45U x 19"EIA, 7'H x 20.3"W x 36.42" to 42.32"D, (2.1 m x 516 mm x 925 to 1075 mm)	101 lb 45.8 kg

**QuadraRack Server Frame**

Part No.	Description	Wt.
15053-X03	45U x 19"EIA x 29"D (740 mm) channels, 7'H x 20.3" x 41"D frame (2.1 m x 516 mm x 1042 mm)	77 lb 34.9 kg

Order cage nuts separately

**ExpandaRack**

Converts Standard and Universal Racks into QuadraRacks

Part No.	Description	Wt.
50110-X03	For 7'H (2.1 m)	46 lb/20.9 kg
50110-X15	For 8'H (2.4 m)	48 lb/21.8 kg
50110-X08	For 9'H (2.7 m)	50 lb/22.7 kg
<b>For Universal Racks</b>		
50130-X03	For 7'H (2.1 m)	52 lb/23.6 kg
50130-X15	For 8'H (2.4 m)	55 lb/24.9 kg
50130-X08	For 9'H (2.7 m)	58 lb/26.3 kg

X=color: (-1) for Gray, (-2) for White and (-7) for Black.

**Key Accessories**

Part No.	Description	Wt.
40604-003	Concrete Slab Install Kit	1 lb/0.5 kg
40607-001	Wood Floor Install Kit	2 lb/0.9 kg
12637-001	M6 Cage Nuts, 25	1 lb/0.5 kg
12638-001	10-32 Cage Nuts, 25	1 lb/0.5 kg
12639-001	12-24 Cage Nuts, 25	1 lb/0.5 kg
40605-001	#12-24 Screws, Zinc, 50	1 lb/0.5 kg
40605-005	#12-24 Screws, Black, 50	1 lb/0.5 kg

Part No.	Description	Wt.
15251-X03	45U x 19"EIA, 7'H x 23.6"W x 23.6"D (2.1 m x 600 mm x 600 mm), rails adjust 15.0" to 29.5" D (380 mm to 750 mm D)	185 lb 83.9 kg
15252-X03	45U x 19"EIA, 7'H x 23.6"W x 35.4"D (2.1 m x 600 mm x 900 mm), rails adjust 15.0" to 41.3" D (380 mm to 1050 mm D)	193 lb 87.5 kg

Part No.	Description	Wt.
15253-X03	45U x 19"EIA, 7'H x 23.6"W x 23.6"D (2.1 m x 600 mm x 600 mm), rails adjust 15.0" to 29.5" D (380 mm to 750 mm D)	185 lb 83.9 kg
15254-X03	45U x 19"EIA, 7'H x 23.6"W x 35.4"D (2.1 m x 600 mm x 900 mm), rails adjust 15.0" to 41.3" D (380 mm to 1050 mm D)	193 lb 87.5 kg

X=color: (-1) for Gray, (-2) for White, (-7) for Black. Other sizes available. Contact Technical Support at 800-834-4969 for assistance.

**Adjustable Rail ServerRack**

Part No.	Description	Wt.
15253-X03	45U x 19"EIA, 7'H x 23.6"W x 23.6"D (2.1 m x 600 mm x 600 mm), rails adjust 15.0" to 29.5" D (380 mm to 750 mm D)	185 lb 83.9 kg
15254-X03	45U x 19"EIA, 7'H x 23.6"W x 35.4"D (2.1 m x 600 mm x 900 mm), rails adjust 15.0" to 41.3" D (380 mm to 1050 mm D)	193 lb 87.5 kg

X=color: (-1) for Gray, (-2) for White, (-7) for Black. Other sizes available. Contact Technical Support at 800-834-4969 for assistance.

**Key Accessories**

Part No.	Description	Wt.
40604-003	Concrete Slab Install Kit	1 lb/0.5 kg
40607-001	Wood Floor Install Kit	2 lb/0.9 kg
12637-001	M6 Cage Nuts, 25	1 lb/0.5 kg
12638-001	10-32 Cage Nuts, 25	1 lb/0.5 kg
12639-001	12-24 Cage Nuts, 25	1 lb/0.5 kg
40605-001	#12-24 Screws, Zinc, 50	1 lb/0.5 kg
40605-005	#12-24 Screws, Black, 50	1 lb/0.5 kg



CPI's online Product Configurator is an easy-to-use confidential tool that guides you through the steps and selections necessary to create customized systems. Check out the Product Configurator at [www.chatsworth.com/configurator](http://www.chatsworth.com/configurator).

www.chatsworth.com • techsupport@chatsworth.com • +1-800-834-4969  
©2011 Chatsworth Products, Inc. All rights reserved. CPI, CPI Passive Cooling, MegaFrame, Saf-T-Grip, Seismic Frame, SlimFrame, TeraFrame, GlobalFrame, Cube-IT Plus, Evolution, OnTrac, QuadraRack and Velocity are federally registered trademarks of Chatsworth Products, Inc. Simply Efficient is a trademark of Chatsworth Products, Inc. All other trademarks belong to their respective companies. Rev. 11/11 MKT#60020-203