

Product Cut Sheet

QUADRARACK® ACCESSORIES

Heavy Duty Fixed Shelf - Solid

Specially designed for QuadraRack. 1U x 19"W x 29"D (740 mm) shelf. Supports up to 200 lb (90.7 kg).

Heavy Duty Fixed Shelf - Vented

Specially designed for QuadraRack. 1U x 19"W x 29"D (740 mm) vented shelf that optimizes airflow. Supports up to 200 lb (90.7 kg).

Extra Heavy Duty 4-Point Sliding Shelf

Specially designed to support heavy equipment. 2U x 19"W x 26"D (660 mm) sliding shelf, extends 24" (610 mm), adjusts between 20" and 34" (510 mm and 860 mm) mounting depth. Supports up to 300 lb (136.1 kg).

Equipment Tie-Down Bracket

Prevents back-and-forth, side-to-side and up-and-down movement of shelf-mount equipment. 3U x 19"W x 23"D (580 mm).

Dust Cover

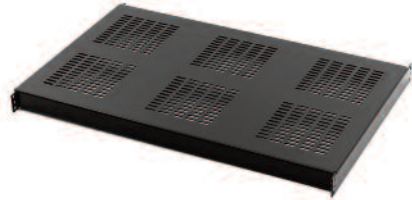
Improves the appearance of QuadraRack 4-Post Frame and prevents the accumulation of dust and debris at the base.

Power Strips

Both horizontal and vertical power strips can be mounted to the QuadraRack. These solutions can be found in Section 7.



16351-X19



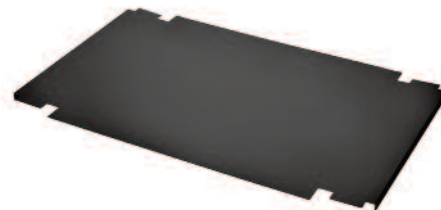
16350-X19



12700-X19



16356-X19



16341-X19

Part Number	Description	Shipping Weight lb (kg)
16351-X19	Heavy Duty Fixed Shelf, Solid	11 (5.0)
16350-X19	Heavy Duty Fixed Shelf, Vented	11 (5.0)
12700-X19*	Extra Heavy Duty Sliding Shelf*	8 (3.6)
16342-X01	Rack Line-Up Spacer, Universal	1 (0.5)
16342-X02	Rack Line-Up Spacer, Standard	1 (0.5)
16356-X19	Equipment Tie-Down Bracket	4 (1.8)
16341-X19	Rack Base Dust Cover	4 (1.8)

X=color: 1=Gray, 2=Computer Beige, 5=Clear, 7=Black, E=Glacier White

*Not available in Clear.

800-834-4969 in U.S. & Canada • www.chatsworth.com



CHATSWORTH PRODUCTS

©2013 Chatsworth Products, Inc. All rights reserved. CPI, CPI Passive Cooling, GlobalFrame, MegaFrame, Saf-T-Grip, Seismic Frame, SlimFrame, TeraFrame, Cube-IT Plus, Evolution, OnTrac, Velocity and QuadraRack are federally registered trademarks of Chatsworth Products. eConnect and Simply Efficient are trademarks of Chatsworth Products. All other trademarks belong to their respective companies. 6/13