

# Product Information Sheet

## PATCH PANEL ENCLOSURES FOR 6" D (150 mm) RAISED ACCESS FLOORS



### TELECOMMUNICATION ENCLOSURES

The A0622-RF is a consolidation point enclosure suitable for use in air handling spaces. Support 4U of 19" patch panels under 6" deep (150 mm) raised floors. A0622-RF may be supported from the raised floor pedestals with included brackets and uses the 2' x 2' raised floor tile as a lid.

A0622-RF has four edge-protected cable access ports that include fire rated foam sealing kits. Equipment is supported on facing pairs of 19" wide by 2U high mounting rails (4U total) that pivot to provide easy access to the front and rear of equipment. Cable tie points are included within the enclosure. Use Saf-T-Grip® Cable Management Straps to secure cables.

#### ■ Cable Entry/Exit

- (4) 6-3/4"W x 2"H (171 mm x 50 mm) edge-protected cable access ports
- Includes approved fire-rated foam sealing kits

#### ■ Equipment Support

- 4U divided 2U-2U for 19" patch panels.
- Mounting rails pivot to provide easy access to the rear of equipment.

#### ■ Materials

- Enclosure: .060" thick (1.52 mm) sheet aluminum, riveted construction
- Foam Sealing Kit: Polychloroprene latex compound
- Installation V Brackets: steel

#### ■ Packaging

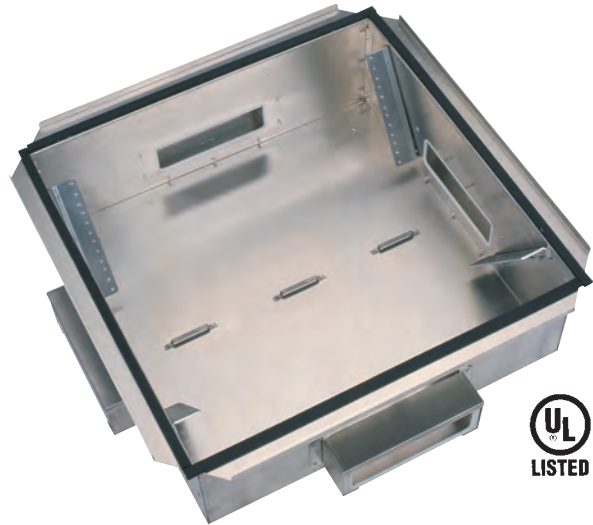
- 1 Enclosure/Carton

#### ■ Approvals

- UL Listed - Communications Circuit Accessory
- UL File Number/E185147 (UL 1863; UL 50; UL 2043)

#### ■ Specifications

- Enclosure: 25-1/2"W x 25-1/2"L x 4-3/4"D (647 mm x 647 mm x 120 mm)
- Weight: 23 lb



Part Number	Description	Shipping Weight
A0622-RF	2U + 2U Enclosure for 6" Deep (150 mm) Floor	23 lb (10.4 kg)

#### ■ Installation

- Includes mounting brackets for 1-1/2" rectangular or round raised floor pedestals.
- Use #12-24 equipment mounting screws to attach patch panels (P/N 40603-001).
- Use Saf-T-Grip Cable Management Straps to manage cables (P/N 02006-201).

800-834-4969 U.S. & Canada • [www.chatsworth.com](http://www.chatsworth.com)



CHATSWORTH PRODUCTS, INC.

©2009 Chatsworth Products, Inc. All rights reserved. CPI, CPI Passive Cooling, Saf-T-Grip, Seismic Frame, SlimFrame and MegaFrame are federally registered trademarks of Chatsworth Products, Inc. Cube-iT Plus, Evolution, OnTrac, QuadraRack, Simply Efficient and TeraFrame are trademarks of Chatsworth Products, Inc. All other trademarks belong to their respective companies. Rev.2 03/09