

Product Information Sheet

DROP-IN FLOOR ENCLOSURE WITH LID FOR PATCH PANELS

The A0802-RF-DI is a consolidation point enclosure suitable for use in air handling spaces and installed completely below floors greater than 9". A0802-RF-DI includes a locking removable cover.

A0822-RF-DI has two edge-protected cable access ports that include fire rated foam sealing kits. Equipment is supported on facing pairs of 19" wide by 4U high mounting rails (8U total) that pivot to provide easy access to the front and rear of equipment. Cable tie points are included within the enclosure. Use Saf-T-Grip® Cable Management Straps to secure cables.

■ Cable Entry/Exit

- (2) 9-3/4" wide x 2-3/4" high edge-protected cable access ports
- Includes approved fire-rated foam sealing kits

■ Equipment Support

- 8U divided 4U-4U for 19" patch panels.
- Mounting rails pivot to provide easy access to the rear of equipment.

■ Materials

- Enclosure: .060" thick sheet aluminum, riveted construction
- Foam Sealing Kit: Polychloroprene latex compound
- Installation Brackets: steel

■ Packaging

- 1 Enclosure/Carton

■ Approvals

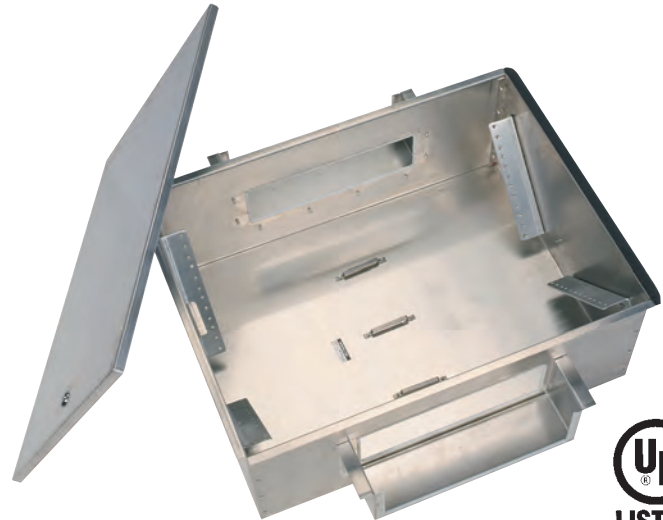
- UL Listed - Communications Circuit Accessory
- UL File Number/E185147 (UL 1863; UL 50; UL 2043)

■ Specifications

- Enclosure: 22" wide x 23" long x 8-3/4" deep
- Weight: 25 lb

■ Installation

- Includes mounting brackets for 1-1/2" rectangular or round raised floor pedestals
- Use #12-24 equipment mounting screws to attach patch panels (P/N 40605-001).
- Use Saf-T-Grip Cable Management Straps to manage cables (P/N 02006-201).



Part Number	Description	Shipping Weight
A0802-RF-DI	4U + 4U Enclosure for 9"D (230 mm) Floor	25 lb (11. kg)

 **American Access
Technologies, Inc.™**
Telecommunication Enclosures



CHATSWORTH PRODUCTS, INC.

©2009 Chatsworth Products, Inc. All rights reserved. CPI, CPI Passive Cooling, Saf-T-Grip, Seismic Frame, SlimFrame and MegaFrame are federally registered trademarks of Chatsworth Products, Inc. Cube-iT Plus, Evolution, OnTrac, QuadraRack, Simply Efficient and TeraFrame are trademarks of Chatsworth Products, Inc. All other trademarks belong to their respective companies. 09/09