

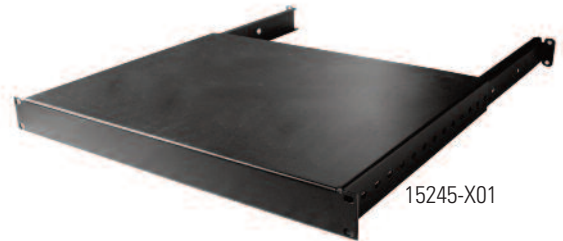
Product Cut Sheet

SOLID AND VENTED SHELVES

Supports heavy peripheral equipment. 1U x 19"W steel, shelf with adjustable depth rear mounting brackets with solid or vented support surface; 17.68"W (449.1 mm) . Supports 200 lb (90.7 kg) of equipment; includes assembly hardware.

Shelves		Shelf Depth in (mm)	Mounting Channel Depth in (mm)	Shipping Weight lb (kg)
Solid	Vented			
15245-X01	15255-X01	13.84 (351.5)	15.75 to 21.65 (400 to 550)	10 (4.5)
15245-X02	15255-X02	20.73 (526.5)	22.64 to 28.54 (575 to 725)	12 (5.4)
15245-X03	15255-X03	27.62 (701.6)	29.53 to 35.43 (750 to 900)	15 (6.8)
15245-X04	15255-X04	34.51 (876.6)	36.42 to 42.32 (925 to 1075)	18 (8.2)

X=Color; 1=Gray, 2=Computer Beige, 7=Black, E=Glacier White



800-834-4969 in U.S. & Canada • www.chatsworth.com



CHATSWORTH PRODUCTS

©2013 Chatsworth Products, Inc. All rights reserved. CPI, CPI Passive Cooling, GlobalFrame, MegaFrame, Saf-T-Grip, Seismic Frame, SlimFrame, TeraFrame, Cube-IT Plus, Evolution, OnTrac, Velocity and QuadraRack are federally registered trademarks of Chatsworth Products. eConnect and Simply Efficient are trademarks of Chatsworth Products. All other trademarks belong to their respective companies. 6/13