

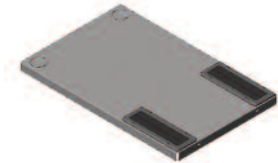
# Product Cut Sheet

## TOP PANELS FOR F-SERIES TERAFRAME® CABINET SYSTEM

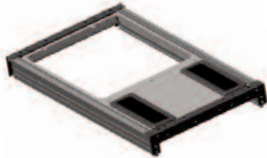
Two top panel styles are available for the F-Series TeraFrame Cabinet System: Server and Network Top Panels.

- Server Top Panels have two 3" x 11.75" (76 mm x 292 mm) brush sealed openings and two 3" (76 mm) diameter cable knockouts, one per corner. The panel can be attached to the cabinet so that the brush sealed openings are located over the front or rear corners of the cabinet. Order a pair of grommets (P/N 35021-000) separately to protect cables when using the cable knockouts.
- Server Top Panels for cabinet frames that are 41.3"D (1050 mm) or deeper also have a large knockout for the Vertical Exhaust Duct on the cable knockout end of the panel. The Vertical Exhaust Duct, an extendable top-mount duct used to isolate and guide hot air away from the cabinet, can be added to cabinets with these top panels. The cable knockouts, which are located inside the Vertical Exhaust Duct knockout, cannot be used with the duct.
- Network Top Panels have four 3" x 11.75" (76 mm x 292 mm) brush sealed openings and four 3" (76 mm) diameter cable openings with grommets, one each per corner. Vertical Exhaust Duct cannot be added to Network Top Panels.

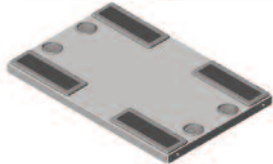
For assistance in configuring your F-Series TeraFrame Cabinet, contact Technical Support at 800-834-4969 or visit CPI's Product Configurator at [www.chatsworth.com/configurator](http://www.chatsworth.com/configurator).



Server Top Panel for cabinet frames less than 40.4"D (1025 mm)



Server Top Panel for cabinet frames 41.3"D (1050 mm) or deeper used with Vertical Exhaust Duct



Network Top Panel



Vertical Exhaust Duct and Server Top Panel (order Vertical Exhaust Duct separately)

Part Number			Frame Depth	Shipping Weight*
600 mm	700 mm	800 mm		
<b>Server Top Panel</b>				
35010-X00	35011-X00	35020-X00	31.5" (800 mm)	21 lb (9.50 kg)
35010-X01	35011-X01	35020-X01	32.5" (825 mm)	21 lb (9.50 kg)
35010-X02	35011-X02	35020-X02	33.5" (850 mm)	22 lb (10.0 kg)
35010-X03	35011-X03	35020-X03	34.4" (875 mm)	23 lb (10.4 kg)
35010-X04	35011-X04	35020-X04	35.4" (900 mm)	23 lb (10.4 kg)
35010-X05	35011-X05	35020-X05	36.4" (925 mm)	24 lb (10.9 kg)
35010-X06	35011-X06	35020-X06	37.4" (950 mm)	25 lb (11.3 kg)
35010-X07	35011-X07	35020-X07	38.4" (975 mm)	26 lb (11.8 kg)
35010-X08	35011-X08	35020-X08	39.4" (1000 mm)	26 lb (11.8 kg)
35010-X09	35011-X09	35020-X09	40.4" (1025 mm)	27 lb (12.2 kg)
35012-X10	35013-X10	35020-X10	41.3" (1050 mm)	28 lb (12.7 kg)
35012-X11	35013-X11	35020-X11	42.3" (1075 mm)	28 lb (12.7 kg)
35012-X12	35013-X12	35020-X12	43.3" (1100 mm)	29 lb (13.2 kg)
35012-X13	35013-X13	35020-X13	44.3" (1125 mm)	30 lb (13.6 kg)
35012-X14	35013-X14	35020-X14	45.3" (1150 mm)	30 lb (13.6 kg)
35012-X15	35013-X15	35020-X15	46.3" (1175 mm)	31 lb (14.1 kg)
35012-X16	35013-X16	35020-X16	47.2" (1200 mm)	32 lb (14.5 kg)
<b>Network Top Panel</b>				
34612-X00	34488-X00	34489-X00	31.5" (800 mm)	23 lb (10.4 kg)
34612-X01	34488-X01	34489-X01	32.5" (825 mm)	24 lb (10.9 kg)
34612-X02	34488-X02	34489-X02	33.5" (850 mm)	25 lb (11.3 kg)
34612-X03	34488-X03	34489-X03	34.4" (875 mm)	26 lb (11.3 kg)
34612-X04	34488-X04	34489-X04	35.4" (900 mm)	26 lb (11.3 kg)
34612-X05	34488-X05	34489-X05	36.4" (925 mm)	27 lb (12.2 kg)
34612-X06	34488-X06	34489-X06	37.4" (950 mm)	28 lb (12.7 kg)
34612-X07	34488-X07	34489-X07	38.4" (975 mm)	29 lb (13.2 kg)
34612-X08	34488-X08	34489-X08	39.4" (1000 mm)	30 lb (13.6 kg)
34612-X09	34488-X09	34489-X09	40.4" (1025 mm)	30 lb (13.6 kg)
34612-X10	34488-X10	34489-X10	41.3" (1050 mm)	31 lb (14.1 kg)
34612-X11	34488-X11	34489-X11	42.3" (1075 mm)	32 lb (14.5 kg)
34612-X12	34488-X12	34489-X12	43.3" (1100 mm)	33 lb (15.0 kg)
34612-X13	34488-X13	34489-X13	44.3" (1125 mm)	33 lb (15.0 kg)
34612-X14	34488-X14	34489-X14	45.3" (1150 mm)	34 lb (15.4 kg)
34612-X15	34488-X15	34489-X15	46.3" (1175 mm)	35 lb (15.9 kg)
34612-X16	34488-X16	34489-X16	47.2" (1200 mm)	36 lb (16.3 kg)

X=Color, C=Black, D=Signature Blue, E=Glacier White, F=Steel Gray. \*Shipping weights are based on the widest Top Panel.

800-834-4969 in U.S. & Canada • [www.chatsworth.com](http://www.chatsworth.com)



CHATSWORTH PRODUCTS, INC.

©2010 Chatsworth Products, Inc. All rights reserved. CPI, CPI Passive Cooling, MegaFrame, Saf-T-Grip, Seismic Frame, SlimFrame, TeraFrame, Cube-IT Plus, Evolution, OnTrac, and QuadraRack are federally registered trademarks of Chatsworth Products, Inc. GlobalFrame, Simply Efficient and Velocity are trademarks of Chatsworth Products, Inc. All other trademarks belong to their respective companies. Rev.4 01/11