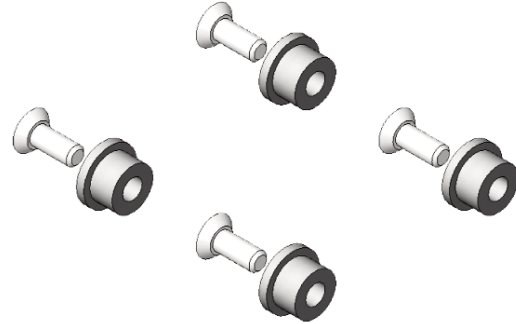


# Product Information Sheet

## VERTICAL POWER STRIP MOUNTING HARDWARE KIT FOR SEISMIC FRAME® TWO-POST RACK

Attach CPI Vertical Power Strips to the side of Seismic Frame Two-Post Rack or to the back of the Seismic Frame Rack Vertical Cabling Section. The Seismic Frame Two-Post Rack is designed specifically to support network equipment in areas with seismic activity. The welded, steel Seismic Frame Two-Post Rack resists the swaying motion caused by earthquakes to reduce the amount of vibration transferred through the rack to equipment and is less likely to be damaged during a seismic event, which means faster network recovery.

- Includes mounting hardware that allows two CPI Vertical Power Strips to attach to the keyholes on the sides of the Seismic Frame Two-Post Rack
- All CPI Vertical Power Strips can attach to the outside of the rack channel unless a vertical cable manager is used in the same space
- CPI Vertical Power Strips that are 1.6"W (41 mm) or less can attach inside the rack channel unless a Cable Management Fingers Kit is used in the same corner



Part Number	Description	Shipping Weight
13697-001	Vertical Power Strip Mounting Hardware Kit	1 lb (0.5 kg)

*Finish is clear (machined aluminum).*

800-834-4969 in U.S. & Canada • [www.chatsworth.com](http://www.chatsworth.com)



CHATSWORTH PRODUCTS, INC.

©2008 Chatsworth Products, Inc. All rights reserved. CPI, CPI Passive Cooling, Saf-T-Grip, Seismic Frame, SlimFrame and MegaFrame are federally registered trademarks of Chatsworth Products, Inc. Cube-IT Plus, Evolution, Simply Efficient, TeraFrame and QuadraRack are trademarks of Chatsworth Products, Inc. All other trademarks belong to their respective companies. NB/09/08