 Signature Solutions ...

Physical Security Solutions



CHATSWORTH
PRODUCTS, INC.

Optimize.
Store.
Secure.SM

Helping You Optimize, Store and Secure Physical Security Infrastructure

Chatsworth Products, Inc. (CPI) is a global manufacturer providing voice, data and security products and service solutions that optimize, store and secure technology equipment. CPI Products offer innovation, configurability, quality and value with a breadth of integrated system components, covering virtually all physical layer needs. With extensive datacom industry expertise and a wide range of security solutions, CPI helps enhance the physical security of technology equipment by providing support, organization and monitoring solutions to suit today's evolving security needs.

Quality

CPI is committed to being a company of the highest quality. This commitment is reflected through our product strength, stability and durability. By using top-notch materials and performing extensive testing on all products, customers can expect the best from CPI.

Unique Solutions

Our extensive product line includes:

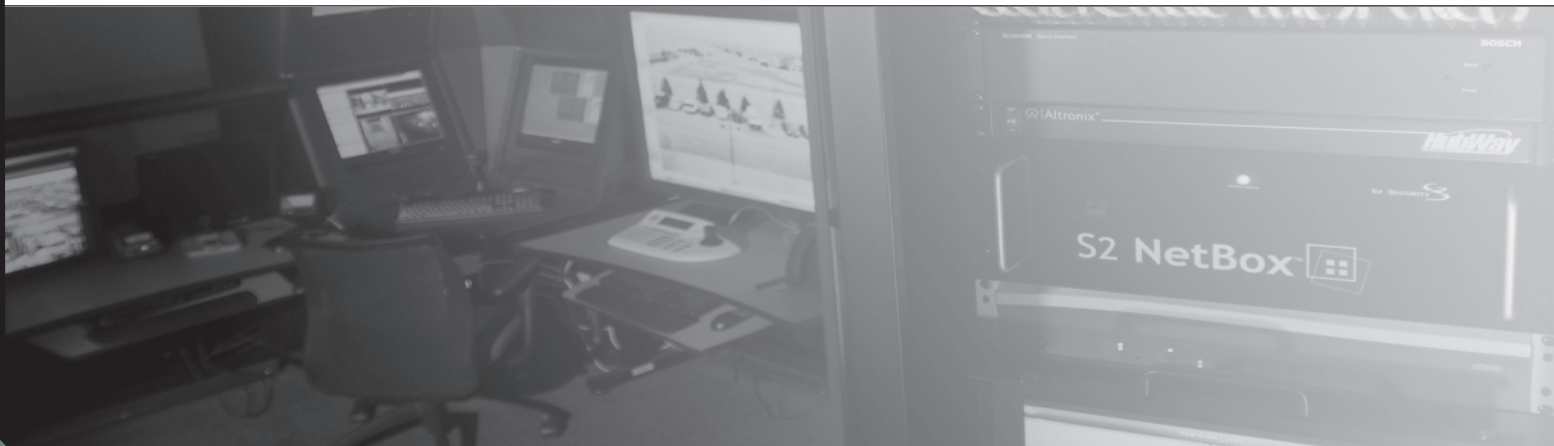
- Rack Systems
- Cabinet & Enclosure Systems
- Zone Cabling & Wireless Enclosures
- Wall-Mount Systems
- Cable Management
- Cable Runway & Tray
- Power Management
- Electronics, Monitoring & Security
- Grounding & Bonding
- Seismic Protection Systems

Support and Service

Unequaled customer service and technical support, as well as a global network of industry-leading distributors, assures our customers that CPI is dedicated to delivering products and services designed to meet their needs. CPI also provides numerous online tools to help customers find the information they need and design solutions to fit their exact requirements.

Value-Added Online Tools

- CAD Blocks and Visio Shapes - download and use in layouts
- Product Configurator - build customized product solutions
- Documentation Center - search product documentation
- PDF Catalog - review CPI's most recent printed catalog
- eCatalog - locate detailed product specifications, photos, drawings and literature
- Three Easy Steps Guide - configure Security Equipment Rack Systems by components



Enhanced Security Solutions for Evolving Technology Needs

To ensure the integrity of your network and equipment it is essential to employ security solutions that provide proper structural support, organization and monitoring capabilities to protect equipment. From small to large applications, CPI offers a variety of scalable solutions that enhance the security of your mission critical environment.

Cabinet and Enclosure Systems

>>> T-Series SteelFrame Cabinet:

Affordable steel cabinet solution for rack-mountable equipment available as a fully configured or frame-only cabinet without side panels or doors.

- Available in 2 widths, 2 heights and 4 depths (wide and shallow depths)
- Include adjustable depth RMU marked mounting rails for simplified equipment installation
- Variety of door styles, fans and grounding and bonding options
- Include lockable front and rear doors
- 2,000 lb (907.2 kg) load rating

Part Number	Description
T1050-742	T-Series SteelFrame Cabinet, 19"W x 84"H x 36"D, (610 mm x 2130 mm x 910 mm), Vented Top Panel, (2) Locking Side Panels, Perforated Metal Front Door, Standard Fan Rear Door, Black
T1060-742	T-Series SteelFrame Cabinet, 19"W x 84"H x 22"D, (610 mm x 2130 mm x 574 mm), Vented Top Panel, (2) Locking Side Panels, Perforated Metal Front & Rear Door, Black
T1030-742	T-Series SteelFrame Cabinet, 19"W x 84"H x 30"D, (610 mm x 2130 mm x 760 mm), Vented Top Panel, (2) Locking Side Panels, Perforated Front Door, Standard Fan Rear Door, Black
13205-001	Caster Kit for SteelFrame Cabinet, Set of 4



>>> F-Series TeraFrame™ Cabinet System:

Feature rich options and accessories available and adaptable for future thermal and cable management options.

- Available in 3 widths, 12 heights and 17 depths (612 standard sizes)
- Include adjustable depth RMU marked mounting rails for simplified equipment installation
- Integrated grounding and bonding features
- Cable management, power distribution and fiber management options
- UL® Listed cabinet and select accessories
- Up to 2,500 lb (1134 kg) load rating

Part Number	Description
FC2E-212B-C22	F-Series TeraFrame Cabinet, 27.6"W x 78.1"H x 35.4"D, (700 mm x 900 mm x 1984 mm), Network Top Panel, (2) Solid Side Panels, Perforated Metal Front & Rear Doors, Black
FF2J-213B-C22	F-Series TeraFrame Cabinet, 27.6"W x 83.4"H x 39.4"D, (700 mm x 2118 mm x 1000 mm) Network Top Panel, (2) Solid Side Panels, Perforated Metal Front Door, Double-Perforated Metal Rear Door, Black
FF1E-213B-C12	F-Series TeraFrame Cabinet, 23.6"W x 83.4"H x 35.4"D, (600 mm x 2118 mm x 1984 mm), Server Top Panel, (2) Solid Side Panels, Perforated Metal Front Door, Double-Perforated Metal Rear Door, Black
35051-C01	Caster Kit for TeraFrame, Set of 4



To meet your exact needs, CPI Cabinet Systems can be configured with a variety of accessories. Some of these accessories include LCD/KVM Consoles, lockable storage drawers, fixed and sliding shelves, solid and vented shelves, casters, cable management and power strips.

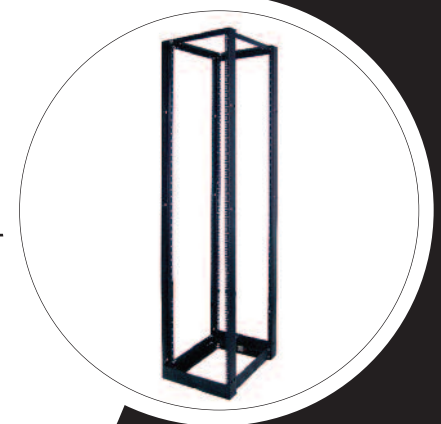
Rack Systems

>>> Four-Post Racks:

Strength and stability of a cabinet in a cost-effective open solution.

- Available in multiple sizes
- Include RMU marked mounting rails for easy equipment installation
- Accept wide range of CPI vertical cabling sections
- Up to 2,000 lb (907.2 kg) load rating

Part Number	Description
15212-703	Adjustable QuadraRack™, 19"W x 84"H (2100 mm), Square-Punched Rails, Mounting Channel Depth Range 22.64" to 28.54"D (575 mm to 725 mm), Black
15214-703	Adjustable QuadraRack, 19"W x 84"H (2100 mm), Square-Punched Rails, Mounting Channel Depth Range 36.42" to 42.32"D (925 mm to 1075 mm), Black
15216-703	Adjustable QuadraRack, 19"W x 84"H (2100 mm), #12-24 Threaded Rails, Mounting Channel Depth Range 22.64" to 28.54"D (575 mm to 725 mm), Black
15218-703	Adjustable QuadraRack, 19"W x 84"H (2100 mm), #12-24 Threaded Rails, Mounting Channel Depth Range 36.42" to 42.32"D (925 mm to 1075 mm), Black



>>> Two-Post Racks:

Small footprint saves floor space and is available in several sizes.

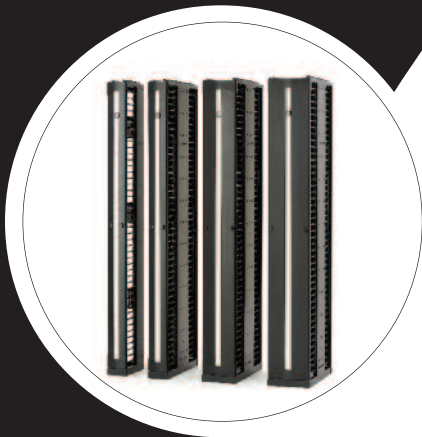
- Available in multiple sizes (Universal Rack is offered in 11 heights)
- Include RMU marked mounting rails for easy equipment installation
- Enclosures offered to create a cabinet-like solution with added security
- UL Listed options
- Up to 1,500 lb (680.4 kg) load rating

Part Number	Description
55053-703	Standard Rack, 19"W x 7"H x 3"D (2.1 m x 80 mm)
46353-703	Universal Rack, 19"W x 7"H (2.1 m), Two Top Angles
48353-703	Universal Rack, 19"W x 7"H (2.1 m), UL Listed
13853-703	19"W Seismic Frame® Two-Post Rack



Cable Management

To optimize signal quality and network speed of your information exchange, CPI provides Cable Management Products that properly manage your cables within, between and around racks and cabinets. By supplying proper cable bend radii, CPI Cable Management Products decrease potential cable damage and prevent tangles cords.



>>> Vertical Cable Managers:

Use to manage large bundles of cable and guide cords between equipment connections.

- Available in single- and double-sided models
- Feature cable management fingers with patented 1 RMU spacing
- Select models offer doors
- Can be installed within CPI Cabinets for secure installations

Part Number	Description
3551X-703	Evolution™ g1 Single-Sided Cable Manager, Available 6"W - 15"W, (150 mm - 380 mm)
3552X-703	Evolution™ g2 Double-Sided Cable Manager, Available 6"W - 15"W, (150 mm - 380 mm)
3009X-703	MCS Master Cabling Section, Single- or Double-Sided, 4.4"W - 10"W (112 mm - 250 mm)
3016X-703	CCS Combination Cabling Section, 3.65"W (92.7 mm), 6"W (150 mm), or 10"W (250 mm)
5700X-703	Global Standard Pack Includes; Rack, Cabling Section and Installation Kit

X=Indicates part number for optional sizes

>>> Horizontal Cable Managers:

Guide and organize cables from equipment to vertical cable managers.

- Available in single- and double-sided models
- Guide and organize cables from equipment to vertical cable managers
- Select models offer snap-on covers
- Can be installed within CPI Cabinets for secure installations

Part Number	Description
35541-70X	Evolution™ Horizontal Cable Manager, Available 1, 2 and 3 RMU
30530-719	Universal Horizontal Cable Manager, 19" (482.6 mm) or 23"W (584 mm), Available 1, 2 and 3 RMU



Wall-Mount Systems

CPI Wall-Mount Systems create accessible locations for equipment where space is limited or does not exist. These systems allow you to store and secure equipment on the wall inside or outside of the equipment room.



>>> Enclosed Wall-Mount Systems:

Provide additional security for equipment installed outside of rooms and are perfect for installations in high-traffic areas and have safety features to prevent injuries.

- Enclosed with lockable doors for added security
- Available in 19" (482.6 mm) rack-mount width
- Standard EIA-310-D hole pattern
- Offer up to 200 lb (90.7 kg) static load rating
- Wall-mounted, floor supported cabinets offer up to 1000 (453.6 kg) static load rating

Part Number	Description
11900-724	Cube-iT PLUS™ Wall-Mount Cabinet System, 24"W x 24"H x 24"D (610 mm x 610 mm x 610 mm)
11900-736	Cube-iT PLUS Wall-Mount Cabinet System, 24"W x 36"H x 24"D (610 mm x 910 mm x 610 mm)
11900-748	Cube-iT PLUS Wall-Mount Cabinet System, 24"W x 48"H x 24"D (610 mm x 1220 mm x 610 mm)
13494-760	Cube-iT PLUS Wall-Mounted, Floor Supported Cabinet, 27.3"W x 60"H x 18"D (693 mm x 1520 mm x 460 mm)
13494-772	Cube-iT PLUS Wall-Mounted, Floor Supported Cabinet, 27.3"W x 72"H x 18"D (693 mm x 1830 mm x 460 mm)
13050-713	ThinLine II Wall-Mounted Cabinet 26"W x 26"H x 12"D (660 mm x 660 mm x 300 mm)

>>> Open Wall-Mount Systems:

Open architecture provides free airflow and easy access to equipment and cables; use in secure rooms.

- Available in 19" (482.6 mm) or 23" (584 mm) rack-mount widths
- Standard EIA-310-D hole pattern
- Roll-formed #12-24 tapped mounting holes for installing equipment, shelves and trays
- Offer up to 350 lb (158.8 kg) static load rating

Part Number	Description
11960-718	Fixed Wall-Mount Equipment Rack, 19"EIA x 24.5"H x 18"D (622 mm x 460 mm)
11961-718	Fixed Wall-Mount Equipment Rack, 19"EIA x 38.5"H x 18"D (978 mm x 460 mm)
11790-718	Standard Swing Gate Wall Rack, 19"EIA x 24.5"H x 18"D (622 mm x 460 mm)
11791-718	Standard Swing Gate Wall Rack, 19"EIA x 38.5"H x 18"D (978 mm x 460 mm)
11807-718	Standard Swing Gate Wall Rack, 19"EIA x 49.0"H x 18"D (1245 mm x 460 mm)



Shelves and Accessories

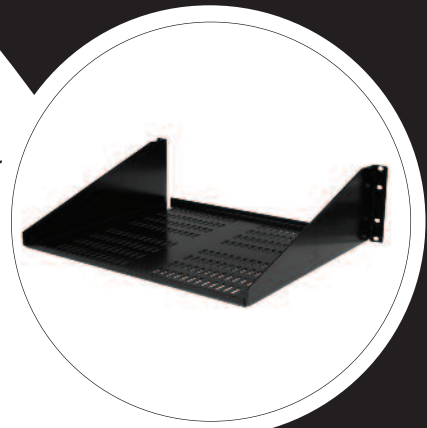
To meet your needs, CPI offers a variety of shelves and accessories including vented and solid shelves, monitor shelves and lockable storage drawers. Use these products to customize your Cabinet, two- or four-post Rack or Wall-Mount System.

>>> Shelves:

Support various load capacities.

- Solid and vented options; vented shelves allow free airflow around equipment
- Available in 19" (482.6 mm) or 23" (584 mm) rack-mount widths
- Use in CPI Cabinets, Racks and Wall-Mount Systems

Shelves for Four-Post Racks	
Part Number	Description
12610-719	19"W Low Profile Fixed, Vented, 100 lb (45.4 kg) load
15255-703	19"W Vented, 200 lb (90.7 kg) load
Shelves for Two-Post Racks	
40074-700	19"W Single-Sided, 50 lb (22.7 kg) load
11231-719	19"W Double-Sided, 100 lb (45.4 kg) load
11359-119	19"W Double-Sided Low Profile, 60 lb (27.2 kg) load
40117-719	19"W Single-Sided Vented, 50 lb (22.7 kg) load



>>> Monitor Shelves: LCD/KVM Console

Use in CPI Cabinets and four-post Rack Systems.

- Uses only 1 RMU of space
- Connect to one, eight or 16 computers
- Include 19" (482.6 mm) EIA shelf, 106 key keyboard and touch pad
- Available with 15", 17" and 19" LCD display (380 mm, 430 mm, and 480 mm)

Part Number	Description
13715-301	15" LCD/KVM Console (380 mm), 19"W x 1 RMU x 19"D (485 mm)



>>> Accessories: Lockable Storage Drawer

Secure location for important items.

- Available in 19" (482.6 mm) or 23" (584 mm) rack-mount widths
- Support up to 100 lb (45.5 kg) load

Part Number	Description
13082-719	19"W Lockable Storage Drawer, 2 RMU x 20"D (510 mm), 100 lb (45.4 kg)

Cable Runway and Tray

CPI's Cable Runway and Tray Products provide horizontal, vertical and backbone pathway solutions to easily manage and protect cables while maximizing network infrastructure uptime. With a variety sizes, options and accessories available, CPI's Cable Runway and Tray Products can be tailored to meet your specific requirement and are adaptable for future growth.

>>> Cable Runway:

- Support backbone and horizontal cables between point of entry and exit into equipment rooms
- Mount under access floors and above acoustic ceilings

Part Number	Description
10250-712	12"W (300 mm) Universal Cable Runway
11252-712	12"W (300 mm) TELCO Style Cable Runway
11275-712	12"W (300 mm) UL Classified Cable Runway



>>> Cable Tray: OnTrac™ Wire Mesh Cable Tray System

- Support large quantities of network cables in equipment rooms and office spaces
- Mount to the wall, ceiling, floor or tops of cabinets and racks
- Flexible system that can be cut and formed around existing obstacles

Part Number	Description
34811-712	12"W (300 mm) OnTrac Wire Mesh Cable Tray, 2"H (50 mm)
34821-712	12"W (300 mm) OnTrac Wire Mesh Cable Tray, 4"H (100 mm)
34831-712	12"W (300 mm) OnTrac Wire Mesh Cable Tray, 6"H (150 mm)



Zone Cabling and Wireless Enclosures

Create consolidation points and reduce the overall cost of adding or moving network cabling with CPI's Zone Cabling and Wireless Enclosures. Designed with small exterior dimensions, CPI Zone Cabling and Wireless Enclosures allow you to secure equipment inside or outside of the equipment room.



>>> Zone Cabling & Wireless Enclosures:

- Protect wireless access points and secure network connections.
- Small exterior dimensions save space in tight areas
 - Enclosed for security and safety
 - Suitable for low-voltage and active applications
 - Some models can be used outdoors, in warehouses and light industrial environments
 - UL Listed

Part Number	Description
A1222-PP	2' x 2' Ceiling Enclosure for Patch Panels
13812-002	2' x 2' Ceiling Enclosure for Patch Panels, Large Ports
A1222-HR	2' x 2' Ceiling Enclosure for Hubs, Switches
13812-001	2' x 2' Ceiling Enclosure for Hubs, Switches, Large Ports
A1222-LP	2' x 2' Ceiling Enclosure for Wiring Blocks
13812-003	2' x 2' Ceiling Enclosure for Wiring Blocks, Large Ports



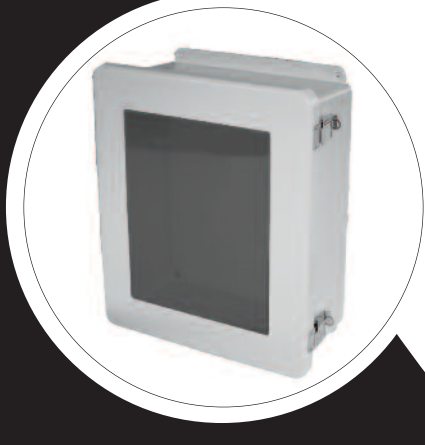
- AAT-CAP-00
- AAT-CAP-UNI
- AAT-CAP-11
- AAT-CAP-12
- AAT-CAP-1232
- AAT-CAP-1242
- AAT-CAP

AAT-CAP features interchangeable door-mounted faceplates with mounting brackets for equipment

Ceiling-Mounted Wireless Access Point Enclosures	
Part Number	Description
AAT-CAP	14.5"L x 12"W X 10"D Enclosure (368 mm x 300 mm x 250 mm)
AAT-CAP-10-P	14.5"L x 12"W X 13"D Enclosure (368 mm x 300 mm x 330 mm) with junction box
AAT-CAP-S	14.5"L x 12"W X 5"D Enclosure (368 mm x 300 mm x 130 mm)
Faceplates for Wireless Enclosures	
AAT-CAP-00	Blank (solid) Faceplate
AAT-CAP-UNI	Universal Faceplate
AAT-CAP-1232	For Cisco® Aironet® 1232
AAT-CAP-1242	For Cisco® Aironet® 1242
AAT-CAP Enclosures, 10"D (250 mm) With Faceplates	
AAT-CAP-00-KIT	Blank (Solid) Faceplate
AAT-CAP-UNI-KIT	Universal Faceplate
AAT-CAP-1232-KIT	For Cisco® Aironet® 1232
AAT-CAP-1242-KIT	For Cisco® Aironet® 1242
AAT-CAP Enclosures, 5"D (130 mm) With Faceplates	
AAT-CAP-S-00-KIT	Blank (Solid) Faceplate
AAT-CAP-S-UNI-KIT	Universal Faceplate
AAT-CAP-S-1232-KIT	For Cisco® Aironet® 1232
AAT-CAP-S-1242-KIT	For Cisco® Aironet® 1242

Ceiling Enclosures create a permanent location for various wireless access points or bridges within drop ceilings. Equipment is supported on the access door. Most access doors are pre-punched with openings for antennas. Ceiling Enclosures include support brackets for use with 2' ceiling "grids".

Ceiling-Mounted Wireless Enclosure	
Part Number	Description
13833-001	16.5"L x 15.5"W x 5"D (324 mm x 254 mm x 102 mm) Optimized for Cisco® Aironet® 1250



Wall-Mount NEMA Rated Wireless Enclosure	
Part Number	Description
AAT-MWME-P	11.5"H x 9.5"W x 4.5"D Enclosure, (292 mm x 241 mm x 114 mm) with solid door
AAT-WME-P	15.5"H x 13.5"W x 6"D Enclosure, (394 mm x 343 mm x 150 mm) with solid door
AAT-WMESG-P	15.5"H x 13.5"W x 6"D Enclosure, (394 mm x 343 mm x 150 mm) with tinted window door

Power Management

UL Listed, CPI's Power Management Products deliver safe and efficient power distribution to support a wide range of active equipment. Available in multiple sizes and configurations, CPI's Power Management Products fully integrate with CPI's Cabinet and Rack Systems for simplified installation and use.

>>> Vertical and Horizontal Power Strips:

Share a single power connection for several pieces of equipment.

- Offered in Single- and Three-Phase options
- Available with UL Listed magnetic circuit breakers, built-in local and/or IP current meters
- Provide built-in circuit breakers
- Single-Phase offers 15, 20 and 30 Amp options
- Three-Phase offers 20, 30, 60, 80 and 120 Amp options

Part Number	Description
12819-703	Vertical Mount Power Strip for Universal Racks, 125V, 15A, 17"L, Surge Protection, Circuit Breaker, NEMA Plug & Outlets
12851-752	Single-Input, Single-Phase Vertical Power Strip, 125 Volts, 15 Amp, 66"L Local Current Monitoring, Circuit Breaker and Surge Protection
13240-751	Dual-Input, Vertical Power Strip, 125V, 20 Amp, 66"L, NEMA Plug and Outlets, Local Monitoring, Thermal Circuit Protection
12848-752	Single-Input, Single-Phase Vertical Power Strip, 125 Volts, 15 Amp, 66"L, Local Current Monitoring, Surge Protection, Thermal Circuit Breaker
35623-211	Single-Input, Single-Phase Vertical Power Strip, 250 Volts, 30 Amp, 66"L Local Current Monitoring, Magnetic Circuit Breaker
13239-758	Horizontal Rack-Mount, Single-Input, Single-Phase, 125V, 20A, 1 RMU, Local Power Meter, Surge Protection, Thermal Circuit Breaker
35693-213	Horizontal Rack-Mount, Single-Input, Single-Phase, 250V, 20A, 1 RMU, Local Power Meter, Magnetic Circuit Breaker
12820-701	Power Strip for Cube-iT Plus, 15A, NEMA (5-15P), 10"L



>>> Power Distribution Units:

Create multiple circuits from a single high-power circuit.

- Provide redundant power when used with power strips in multiple racks or cabinets



Electronic Locks and Monitoring

CPI's Electronic Locks and Monitoring Systems fulfill security, safety and functionality needs by providing locking systems that protect equipment and cabling housed in Cabinets and remote monitoring solutions designed for equipment rooms.

>>> Electronic Locking System:

Upgrade CPI Cabinets to automate security access to equipment.

- IP addressable locking system
- Provide electronic record of each cabinet access attempt
- Combine a Communications Module with Electronic Lock Control Modules to build a network that will control cabinet access via Keypad Modules, Proximity Card Reader Modules and authorized IP control
- Allow up to 10 levels of authorization, provide monitoring and alarm reporting

Part Number	Description
16147-050	Communications Module, (includes mounting brackets, a null modem cable, lock control, software CD and User Manual)
16147-052	Electronic Lock Control Module for 8 Handles (includes mounting brackets, 12 VDC power supply and a power cord with a NEMA 5-15P plug)
16147-060	Electronic Lock Upgrade Kit for TeraFrame Cabinet for a single solid metal or perforated metal front door, 1/door, 9'L (2.7 m) cable
16147-061	Electronic Lock Upgrade Kit for TeraFrame Cabinet for a single solid plexiglass front door, 1/door, 9'L (2.7 m) cable
16147-062	Electronic Lock Upgrade Kit with Integrated Keypad Module for TeraFrame Cabinet for a single solid metal or perforated metal front door, 1/door, 9'L (2.7 m) cable
16147-063	Electronic Lock Upgrade Kit for TeraFrame Cabinet for a single or double, solid metal or perforated metal rear door, 1/door, 9'L (2.7 m) cable



>>> Remote Infrastructure Management (RIM-600) System:

Remotely monitor, record, analyze and environmental conditions in equipment rooms.

- Support up to eight external sensors and automatically poll up to 64 IP addresses
- Connect up to 31 Nodes to each Host
- Monitor up to 256 environmental sensors and 2,048 IP addresses and ports
- Connect one PowerGate Module to each Host or Node, providing remote reboot capability for up to 256 outlets

Part Number	Description
60000-001	RIM-600 Host, 100-200 VAC, 50-60 Hz
60001-001	RIM 600 Node, 120 VAC, 60 Hz
60045-001	PowerGate, (1) Power Input Connection, (8) Outlets, max. 20A
60046-001	PowerGate2, (9) IEC C-14 Power Input Connections, (8) Outlets (channel and 1 & 5 rated at 10A max. All other channels rated at 4A max.)
60061-007	Motion Sensor, Passive Infrared with 7'L (2.1 m) Cord
60065-001	Axis® Network Camera
60052-001	Door Open/Closed Sensor Magnetic Read
60062-007	Smoke Detector
60031-001	Humidity Sensor with Display



Why Choose CPI? Flexibility, Availability and Reliability

Chatsworth Products, Inc. (CPI) is a global manufacturer providing voice, data and security products and service solutions that optimize, store and secure technology equipment. CPI Products offer innovation, configurability, quality and value with a breadth of integrated system components, covering virtually all physical layer needs. Unequalled customer service and technical support, as well as a global network of industry-leading distributors, assures customers that CPI is dedicated to delivering products and services designed to meet their needs.

Flexibility

- Achieve Security Objectives
- Broad Product Selection
- Customized Configurations
- Adaptable for Future Applications

Availability

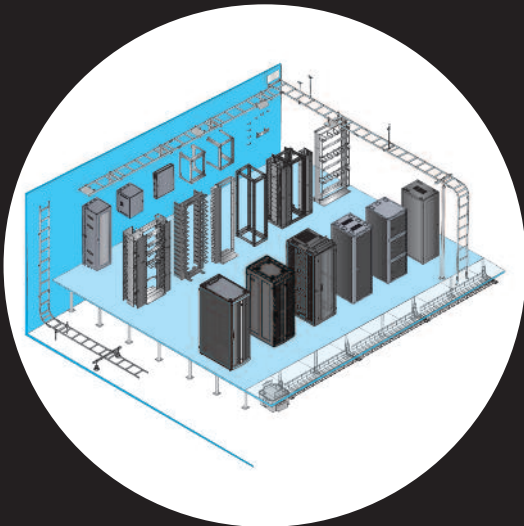
- Global Network of Distributors
- Short Factory Lead Times
- On-Time Delivery

Reliability

- High Quality Products
- Customer Service & Technical Support
- Heavy Duty Packaging

The CPI Total Solution Includes:

Equipment Support	Cable Management
Cable Pathways	Grounding & Bonding
Security & Monitoring	Thermal Management
Power Distribution	Seismic Bracing



CPI Locations

USA

Corporate Office
Weslake Village, CA
818-735-6100

Chatsworth, CA Operations
818-882-8595

Georgetown, TX Operations
512-863-7800

New Bern, NC Operations
252-514-2779

Latin America

Mexico City, Mexico
+52 55 5203-7525
Toll Free 01-800-201-7592

Europe, Middle East, Africa

Buckinghamshire, England
+44 808-234-4497

Asia Pacific

Pudong, Shanghai
+86 21 6880 0266

Find more information about CPI Security Solutions at
www.chatsworth.com/securitysolutions

800-834-4969

techsupport@chatsworth.com



**CHATSWORTH
PRODUCTS, INC.**