

CHATSWORTH PRODUCTS, INC.

WIRELESS CEILING ENCLOSURE

DES. **R. LA BRIE**

JOB NO. **11-0816**

DATE **5/25/10**

SHEET

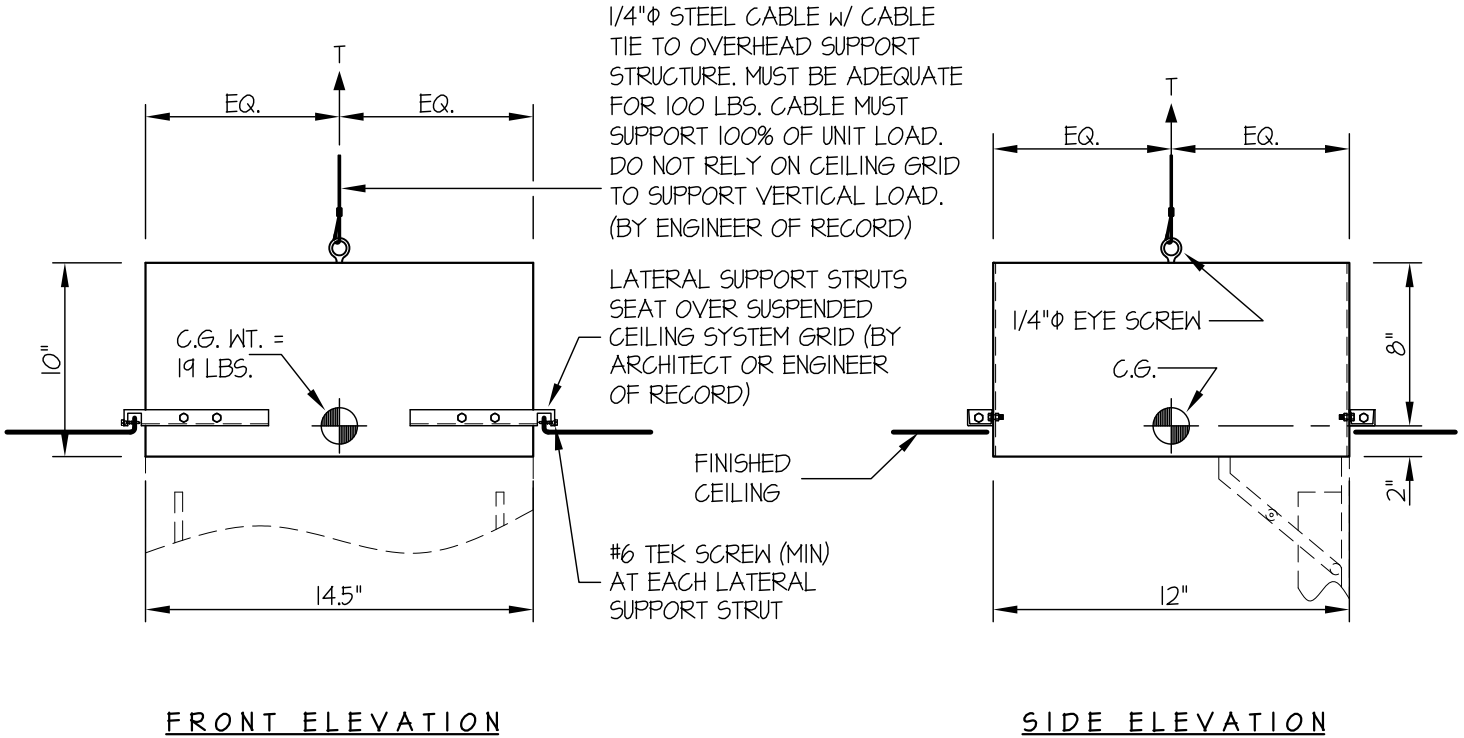
1

OF **1** SHEET

SEISMIC ANCHORAGE

OSHDP - AAT-CAP WIRELESS ENCL.PDF

CEILING MOUNTED



NOTES:

1. FORCES ARE DETERMINED PER 2007 CALIFORNIA BUILDING CODE SECTION 1613A AND ASCE 7-05 SECTIONS 12 AND 13. ALLOWABLE STRESS DESIGN IS USED.

HORIZONTAL FORCE (E_h) = $0.97 W_p$ ($S_{DS} = 1.93$, $a_p = 1.0$, $I_p = 1.5$, $R_p = 2.5$)

VERTICAL FORCE (E_v) = $0.27 W_p$

BOLT FORCES:

TENSION (T)

$$T = \frac{19\# + 5\#}{1 \text{ CABLE}} = 24 \text{ LBS/CABLE (MAX)}$$

NOTE:

PROVIDE CEILING STRUCTURE DESIGNED TO SUPPORT WEIGHTS AND FORCES SHOWN. (BY ENGINEER OF RECORD FOR THE BUILDING)

