

**CHATSWORTH PRODUCTS, INC.**

**WIRELESS CEILING ENCLOSURE**

DES. **R. LA BRIE**

JOB NO. **11-0816**

DATE **5/25/10**

SHEET

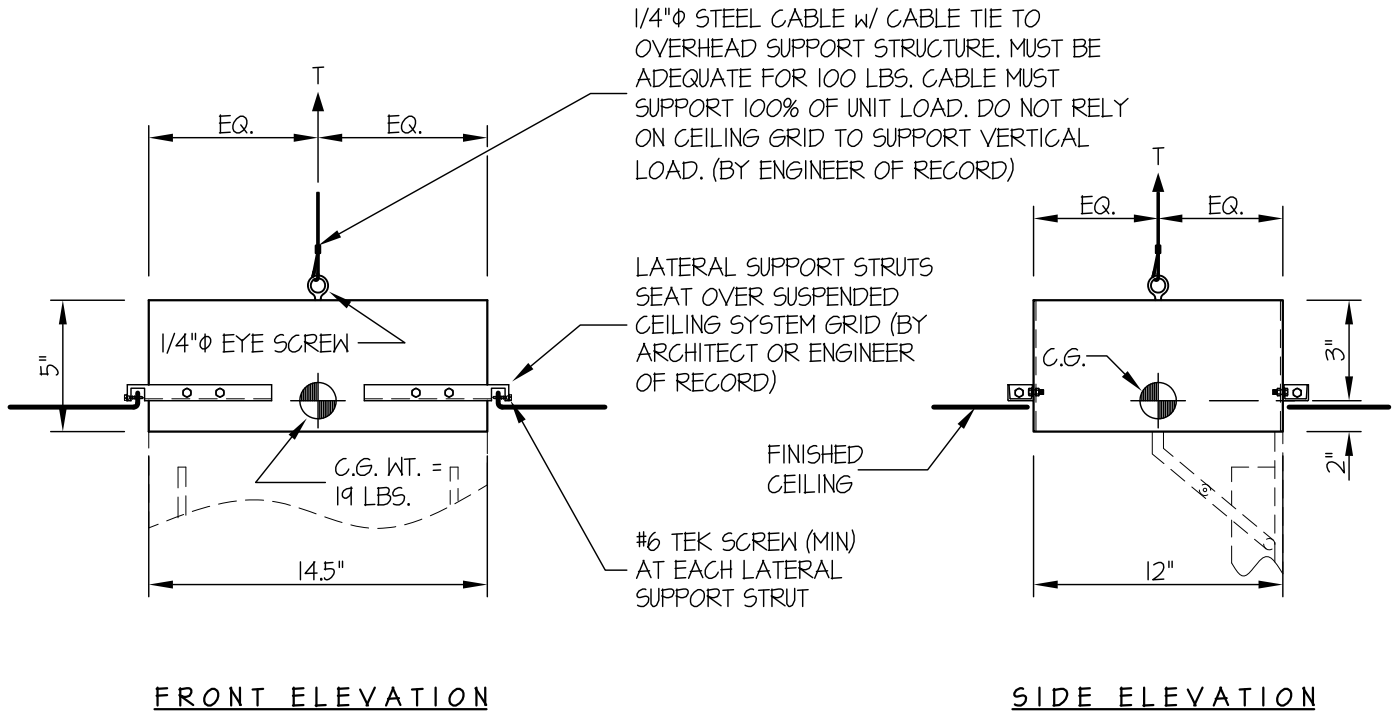
**1**

OF **1** SHEET

SEISMIC ANCHORAGE

OSHDP - AAT- CAP-5 WIRELESS ENCL.PDF

CEILING MOUNTED



NOTES:

1. FORCES ARE DETERMINED PER 2007 CALIFORNIA BUILDING CODE SECTION 1613A AND ASCE 7-05 SECTIONS 12 AND 13. ALLOWABLE STRESS DESIGN IS USED.

HORIZONTAL FORCE ( $E_h$ ) = 0.97  $W_p$  ( $S_{DS}$  = 1.93,  $a_p$  = 1.0,  $I_p$  = 1.5,  $R_p$  = 2.5)

VERTICAL FORCE ( $E_v$ ) = 0.27  $W_p$

BOLT FORCES:

TENSION (T)

$$T = \frac{19\# + 5\#}{1 \text{ CABLE}} = 24 \text{ LBS/CABLE (MAX)}$$

NOTE:

PROVIDE CEILING STRUCTURE DESIGNED TO SUPPORT WEIGHTS AND FORCES SHOWN. (BY ENGINEER OF RECORD FOR THE BUILDING)

