



Office of Statewide Health Planning and Development
ANCHORAGE PRE-APPROVAL

OPA-0836-10

THIS PRE- APPROVAL CONFORMS TO THE 2010 CALIFORNIA BUILDING CODE

Equipment Manufacturer: Chatsworth Products, Inc.

Equipment Type: Ceiling Mounted Zone Enclosure 2 ft. X 4 ft.

GENERAL NOTES

1. FORCES PER ASCE 7-05 SECTION 13.3.1, EQUATIONS 13.3-1, 13.3-2 & 13.3-3, WHERE $S_{Ds} = 2.00$, $a_p = 2.5$, $I_p = 1.5$, $R_p = 2.5$, $z/h \leq 1.0$
2. THIS PRE-APPROVAL CONFORMS TO THE 2010 CALIFORNIA BUILDING CODE.
3. THE DETAILS IN THIS PRE-APPROVAL MAY BE USED AT ANY LOCATION IN THE STATE OF CALIFORNIA, WHERE SDS IS NOT GREATER THAN 2.00.
4. ALL ANCHOR FORCES SHOWN ON THE DRAWINGS ARE FACTORED LOADS THAT SHALL BE USED FOR STRENGTH DESIGN.
5. THIS PRE-APPROVAL COVERS ONLY THE ANCHORAGE OF THE UNIT TO A SUPPORT STRUCTURE ABOVE BY OTHERS .

RESPONSIBILITIES OF THE STRUCTURAL ENGINEER OF RECORD OF THE BUILDING

6. THE SEOR SHALL ALSO VERIFY THE ADEQUACY OF THE STRUCTURES (SUCH AS WALLS AND FLOORS) WHICH SUPPORT THE UNITS FOR THE LOADS IMPOSED ON THEM BY THE UNITS AS WELL AS ALL OTHER LOADS.
7. PROVIDE SUPPORTING STRUCTURE REQUIRED TO SUPPORT WEIGHTS AND FORCES SHOWN, IN ADDITION TO ALL OTHER LOADS.
8. VERIFY THAT THE INSTALLATION IS IN CONFORMANCE WITH THE 2010 CBC AND WITH THE DETAILS SHOWN IN THIS PRE-APPROVAL. VERIFY THAT THE ACTUAL EQUIPMENT'S WEIGHT, CG LOCATION, ANCHOR LOCATIONS, ANCHOR DETAILS AND THE MATERIAL AND GAGE OF THE UNIT WHERE ATTACHMENTS ARE MADE AGREE WITH THE INFORMATION SHOWN ON THE PRE-APPROVAL DOCUMENTS.
9. VERIFY THAT THE COMBINATION OF S_{Ds} & z/h RESULT IN SEISMIC FORCES (E_h , E_v) THAT ARE NOT GREATER THAN THE VALUES ON THE DETAILS.



A P P R O V E D
Fixed Equipment Anchorage
Office of Statewide Health Planning and Development

OPA-0836-10
Pre-approval Program Manager:
Anthony R. Pike
(916) 440-8470

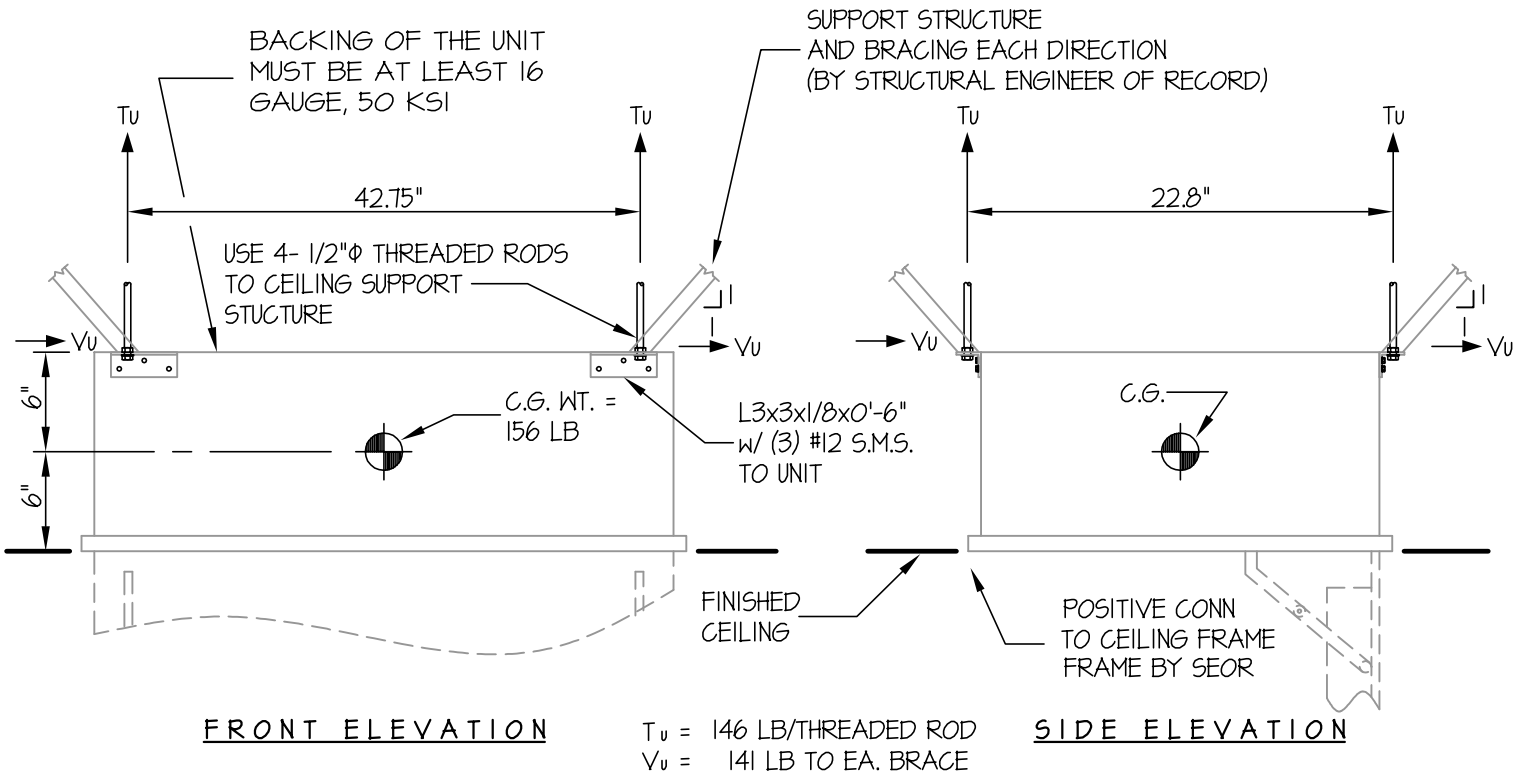


Anthony R. Pike
Reviewed By: Anthony R. Pike 7/26/12

CHATSWORTH PRODUCTS, INC. CEILING MOUNTED ZONE ENCLOSURE 2 FT. X 4 FT.	DES. J. ROBERSON	SHEET 2 OF 2 SHEET
	JOB NO. 11-1131	
	DATE 7/26/12	

SEISMIC ANCHORAGE

CEILING MOUNTED



NOTES:

1. ANCHORAGE DESIGN PER 2010 CALIFORNIA BUILDING CODE AND ASCE 7-05 STRENGTH DESIGN IS USED.

HORIZONTAL FORCE (E_h) = $360 W_p$ ($S_{Ds} = 2.00$, $a_p = 2.5$, $I_p = 1.5$, $R_p = 2.5$, $z/h \leq 1.0$)
 VERTICAL FORCE (E_v) = $0.40 W_p$

2. CENTER OF GRAVITY (C.G.) WEIGHT IS A MAXIMUM. THIS PRE-APPROVAL ENCOMPASSES ALL WEIGHTS UP TO THE MAXIMUM WEIGHT SHOWN.

3. STRUCTURAL ENGINEER OF RECORD FOR THE BUILDING SHALL PROVIDE SUPPORT STRUCTURE DESIGNED TO SUPPORT WEIGHTS AND FORCES SHOWN, IN ADDITION TO ALL OTHER LOADS.

4. SEE GENERAL NOTES: SHEET 1.



A P P R O V E D
Fixed Equipment Anchorage
 Office of Statewide Health Planning and Development

OPA-0836-10
 Pre-approval Program Manager:
 Anthony R. Pike
 (916) 440-8470

Reviewed By: *Anthony R. Pike* 7/26/12