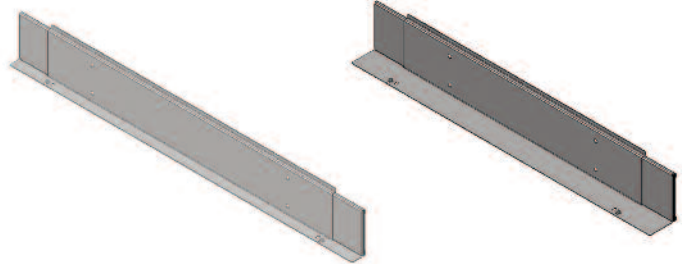


# Product Cut Sheet

## AISLE CONTAINMENT DOOR TOP SEAL KIT

- Use with Cabinet Supported Aisle Containment Solutions only
- Seals the gap above the door when the door is attached to tall cabinets
- Use with all doors attached to the tops of cabinets that are over 88" (2235 mm) high
- Three size ranges; adjustable to match aisle width
- Flush mount and offset mount versions; use offset mount versions with the Door Standoff Kit (P/N 32870-XXX)



Door Top Seal Kit, Flush Mount,  
For Use Without Standoff Kit

Door Top Seal Kit, Offset Mount,  
For Use With Door Standoff Kit

Door Top Seal Kit			
Part Number & Finish		Description	Shipping Weight lb (kg)
Black	Glacier White		
<b>Flush Mount, For Use Without Door Standoff Kit</b>			
32817-701	32817-E01	Adjusts 48"W (1200 mm) to 59"W (1500 mm)	21 (9.5)
32817-702	32817-E02	Adjusts 59"W (1500 mm) to 70"W (1775 mm)	24 (10.9)
32817-703	32817-E03	Adjusts 70"W (1775 mm) to 81"W (2050 mm)	27 (12.3)
<b>Offset Mount, For Use With Door Standoff Kit</b>			
32817-704	32817-E04	Adjusts 48"W (1200 mm) to 59"W (1500 mm)	24 (10.9)
32817-705	32817-E05	Adjusts 59"W (1500 mm) to 70"W (1775 mm)	28 (12.7)
32817-706	32817-E06	Adjusts 70"W (1775 mm) to 81"W (2050 mm)	31 (14.1)

*Note: Use when the tops of cabinets are over 88" (2235 mm) tall.*

800-834-4969 in US & Canada • [www.chatsworth.com](http://www.chatsworth.com)



CHATSWORTH PRODUCTS, INC.

©2012 Chatsworth Products, Inc. All rights reserved. CPI, CPI Passive Cooling, MegaFrame, Saf-T-Grip, Seismic Frame, SlimFrame, TeraFrame, GlobalFrame, Cube-iT Plus, Evolution, OnTrac, QuadraRack and Velocity are federally registered trademarks of Chatsworth Products, Inc. eConnect and Simply Efficient are trademarks of Chatsworth Products, Inc. All other trademarks belong to their respective companies.