

# Product Cut Sheet

## F-SERIES TERAFRAME® GEN 3 CABINET SYSTEM SERVICE PARTS

### Service Parts

This document lists service parts for the F-Series TeraFrame® Gen 3 Cabinet System. Service parts include mounting rails, top panels, side panels, doors and door lock kits and are used as replacement parts or to upgrade cabinets as applications change.

To identify the correct size component, locate the product part number on the label on the bottom front corner of the cabinet frame, or take overall measurements of the cabinet frame. Please contact CPI Technical Support at 800-834-4969 or techsupport@chatsworth.com for assistance.

### TeraFrame Front Door and Lock Kits

Stylish perforated design, with contrasting aluminum center feature, provides security and airflow for rack-mount equipment in the cabinet.

#### Key Features:

- Standard front door on F-Series TeraFrame® Gen 3 Cabinets
- 78% open in perforated area for excellent airflow
- Universal mounting location allows use on the front or rear of the cabinet
- Can be attached to the cabinet to swing open to the left or right
- Opens 120° when cabinets are bayed; 130° when stand alone
- Hinge pins allow quick and easy tool-less removal of the door for maintenance access
- Choice of lock kit with swing handle, keyed or combination/keyed or electronic lock lock and single-or two-point latch for security (ordered separately)

#### Specifications:

- Includes: Door, hinges, installation hardware (order lock kit separately, see tableS)
- Material: Steel sheet and aluminum extrusion
- Finish: Black or Glacier White

#### Ordering:

- Select part number to match the width, usable height and color of the cabinet
- Select the door lock kit separately, there are four styles of lock to choose from:
  - Keyed lock
  - Combination and keyed lock has three 10-digit dials (1000 possible combinations) on the handle and a master key
  - Electronic Lock Kit System 1000 has an 11-button keypad, supports 3 programmable user codes and approximately 15,000 openings with new batteries
  - Electronic Lock Kit System 1500 has a 12-button keypad, supports 22 programmable user codes, a dual code entry mode and approximately 50,000 openings with new batteries



F-Series TeraFrame Single Perforated Front Door				
Part Number - Cabinet Width			Description Door Height (U)	Shipping Weight lb (kg)
23.6" W 600 mm	27.6" W 700 mm	31.5" W 800 mm		
39060-X00	39060-X11	39060-X22	42	33 (15.0)
39060-X01	39060-X12	39060-X23	43	34 (15.4)
39060-X02	39060-X13	39060-X24	44	34 (15.4)
39060-X03	39060-X14	39060-X25	45	35 (15.9)
39060-X04	39060-X15	39060-X26	46	36 (16.3)
39060-X05	39060-X16	39060-X27	47	36 (16.3)
39060-X06	39060-X17	39060-X28	48	37 (16.8)
39060-X07	39060-X18	39060-X29	49	38 (17.2)
39060-X08	39060-X19	39060-X30	50	38 (17.2)
39060-X09	39060-X20	39060-X31	51	39 (17.7)
39060-X10	39060-X21	39060-X32	52	40 (18.1)

X=Color: C=Black, E=Glacier White. Shipping Weights are for 800 mm doors.

Lock Kit for F-Series TeraFrame Single Perforated Front Door				
Part Number		Latch Type	Description Door Height (U)	Shipping Weight lb (kg)
Keyed	Combination and Keyed			
39063-C00	39063-C01	Single-Point	All	3 (1.4)
39064-C00	39065-C00	Two-Point	42	6 (2.7)
39064-C01	39065-C01	Two-Point	43	6 (2.7)
39064-C02	39065-C02	Two-Point	44	6 (2.7)
39064-C03	39065-C03	Two-Point	45	6 (2.7)
39064-C04	39065-C04	Two-Point	46	6 (2.7)
39064-C05	39065-C05	Two-Point	47	6 (2.7)
39064-C06	39065-C06	Two-Point	48	6 (2.7)
39064-C07	39065-C07	Two-Point	49	6 (2.7)
39064-C08	39065-C08	Two-Point	50	6 (2.7)
39064-C09	39065-C09	Two-Point	51	6 (2.7)
39064-C10	39065-C10	Two-Point	52	6 (2.7)

Color is Black. Lock Kit includes swing handle, mounting plate, latch, lock, keys and installation hardware.

Electronic Lock Kit for F-Series TeraFrame Single Perforated Front Door				
Part Number		Latch Type	Description Door Height (U)	Shipping Weight lb (kg)
System 1000	System 1500			
39222-C00	39222-C01	Single-Point	All	3 (1.4)
39226-C00	39229-C00	Two-Point	42	5 (2.3)
39226-C01	39229-C01	Two-Point	43	5 (2.3)
39226-C02	39229-C02	Two-Point	44	5 (2.3)
39226-C03	39229-C03	Two-Point	45	5 (2.3)
39226-C04	39229-C04	Two-Point	46	5 (2.3)
39226-C05	39229-C05	Two-Point	47	5 (2.3)
39226-C06	39229-C06	Two-Point	48	6 (2.7)
39226-C07	39229-C07	Two-Point	49	6 (2.7)
39226-C08	39229-C08	Two-Point	50	6 (2.7)
39226-C09	39229-C09	Two-Point	51	6 (2.7)
39226-C10	39229-C10	Two-Point	52	6 (2.7)

System 1000 handle is silver-colored, latch plate is black. System 1500 handle and plate are black. Lock kit includes a standalone programmable handle, mounting plate, latch and installation hardware.

800-834-4969 in U.S. & Canada • www.chatsworth.com



CHATSWORTH PRODUCTS

+1-800-834-4969

techsupport@chatsworth.com  
www.chatsworth.com

# Product Cut Sheet

## F-SERIES TERAFRAME® GEN 3 CABINET SYSTEM SERVICE PARTS

### Double Perforated Door and Lock Kits

Vertically split design uses minimal aisle space when opened, and provides security and airflow for rack-mount equipment in the cabinet when closed.

#### Key Features:

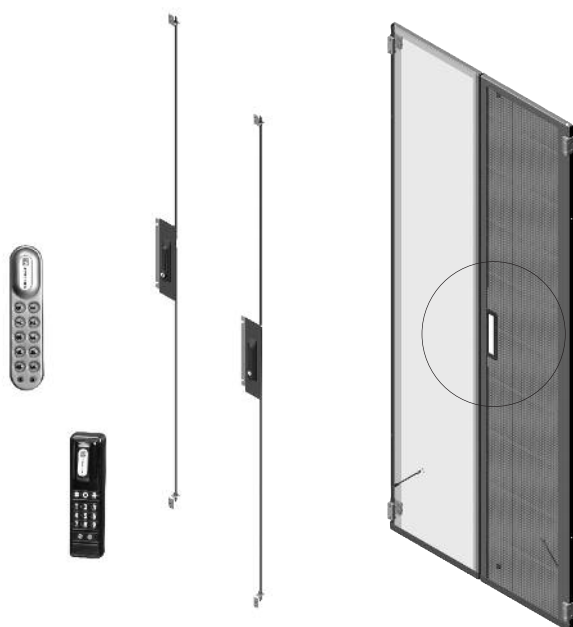
- Low profile, flat, double perforated metal door
- Typically used as the rear door in traditional hot aisle/cold aisle environments or with aisle containment for front-to-rear airflow through the cabinet
- 78% open in perforated area for excellent airflow
- Universal mounting location allows use on the front or rear of the cabinet
- Double door design uses less aisle space when opened
- Opens 180° when cabinets are bayed or stand alone
- Hinge pins allow quick and easy tool-less removal of the door for maintenance access
- Choice of lock kit with swing handle; keyed, combination/keyed or electronic lock and two-point latch for security (ordered separately)

#### Specifications:

- Includes: Door, hinges, installation hardware (order lock kit separately, see tables)
- Material: Steel
- Finish: Black or Glacier White

#### Ordering:

- Select part number to match the width, usable height and color of the cabinet
- Select the door lock kit separately, there are four styles of lock to choose from:
  - Keyed lock
  - Combination and keyed lock has three 10-digit dials (1000 possible combinations) on the handle and a master key
  - Electronic Lock Kit System 1000 has an 11-button keypad, supports 3 programmable user codes and approximately 15,000 openings with new batteries
  - Electronic Lock Kit System 1500 has a 12-button keypad, supports 22 programmable user codes, a dual code entry mode and approximately 50,000 openings with new batteries



F-Series TeraFrame Double Perforated Door				
Part Number - Cabinet Width			Description Door Height (U)	Shipping Weight lb (kg)
23.6"W 600 mm	27.6"W 700 mm	31.5"W 800 mm		
39050-X00	39050-X11	39050-X22	42	37 (16.8)
39050-X01	39050-X12	39050-X23	43	37 (16.8)
39050-X02	39050-X13	39050-X24	44	37 (16.8)
39050-X03	39050-X14	39050-X25	45	38 (17.2)
39050-X04	39050-X15	39050-X26	46	39 (17.7)
39050-X05	39050-X16	39050-X27	47	40 (18.1)
39050-X06	39050-X17	39050-X28	48	40 (18.1)
39050-X07	39050-X18	39050-X29	49	41 (18.6)
39050-X08	39050-X19	39050-X30	50	42 (19.1)
39050-X09	39050-X20	39050-X31	51	43 (19.5)
39050-X10	39050-X21	39050-X32	52	43 (19.5)

X=Color: C=Black, E=Glacier White. Shipping Weights are for 800 mm doors.

Lock Kit for F-Series TeraFrame Double Perforated Door				
Part Number		Latch Type	Description Door Height (U)	Shipping Weight lb (kg)
Keyed	Combination and Keyed			
39054-C00	39055-C00	Two-Point	42	4 (1.8)
39054-C01	39055-C01	Two-Point	43	4 (1.8)
39054-C02	39055-C02	Two-Point	44	4 (1.8)
39054-C03	39055-C03	Two-Point	45	4 (1.8)
39054-C04	39055-C04	Two-Point	46	4 (1.8)
39054-C05	39055-C05	Two-Point	47	5 (2.3)
39054-C06	39055-C06	Two-Point	48	5 (2.3)
39054-C07	39055-C07	Two-Point	49	5 (2.3)
39054-C08	39055-C08	Two-Point	50	5 (2.3)
39054-C09	39055-C09	Two-Point	51	5 (2.3)
39054-C10	39055-C10	Two-Point	52	5 (2.3)

Color is Black. Lock Kit includes swing handle, mounting plate, latch, lock, keys and installation hardware.

Electronic Lock Kit for F-Series TeraFrame Double Perforated Door				
Part Number		Latch Type	Description Door Height (U)	Shipping Weight lb (kg)
System 1000	System 1500			
39225-C00	39228-C00	Two-Point	42	5 (2.3)
39225-C01	39228-C01	Two-Point	43	5 (2.3)
39225-C02	39228-C02	Two-Point	44	5 (2.3)
39225-C03	39228-C03	Two-Point	45	5 (2.3)
39225-C04	39228-C04	Two-Point	46	5 (2.3)
39225-C05	39228-C05	Two-Point	47	5 (2.3)
39225-C06	39228-C06	Two-Point	48	6 (2.7)
39225-C07	39228-C07	Two-Point	49	6 (2.7)
39225-C08	39228-C08	Two-Point	50	6 (2.7)
39225-C09	39228-C09	Two-Point	51	6 (2.7)
39225-C10	39228-C10	Two-Point	52	6 (2.7)

System 1000 handle is silver-colored, latch plate is black. System 1500 handle and plate are black. Lock kit includes a standalone programmable handle, mounting plate, latch and installation hardware.

800-834-4969 in U.S. & Canada • [www.chatsworth.com](http://www.chatsworth.com)



CHATSWORTH PRODUCTS

+1-800-834-4969

[techsupport@chatsworth.com](mailto:techsupport@chatsworth.com)  
[www.chatsworth.com](http://www.chatsworth.com)

# Product Cut Sheet

## F-SERIES TERAFRAME® GEN 3 CABINET SYSTEM SERVICE PARTS

### Solid Rear Door and Lock Kits

Solid door provides security and blocks airflow to/from rack-mount equipment in the cabinet when closed.

#### Key Features:

- Low profile, flat, solid metal door with perimeter seal
- Typically used as the rear door with Vertical Exhaust Duct, Bottom Panel and Air Dam, as part of the CPI Passive Cooling Solution to capture and guide hot exhaust air away from the cabinet
- Universal mounting location allows use on the front or rear of the cabinet
- Can be attached to the cabinet to swing open to the left or right
- Opens beyond 180° when cabinets are bayed or stand alone
- Hinge pins allow quick and easy tool-less removal of the door for maintenance access
- Choice of lock kit with swing handle; keyed, combination/keyed or electronic lock and single- or two-point latch for security (ordered separately)

#### Specifications:

- Includes: Door, hinges, installation hardware (order lock kit separately, see tables)
- Material: Steel
- Finish: Black or Glacier White

#### Ordering:

- Select part number to match the width, usable height and color of the cabinet
- Select the door lock kit separately, there are four styles of lock to choose from:
  - Keyed lock
  - Combination and keyed lock has three 10-digit dials (1000 possible combinations) on the handle and a master key
  - Electronic Lock Kit System 1000 has an 11-button keypad, supports 3 programmable user codes and approximately 15,000 openings with new batteries
  - Electronic Lock Kit System 1500 has a 12-button keypad, supports 22 programmable user codes, a dual code entry mode and approximately 50,000 openings with new batteries



F-Series TeraFrame Single Solid Rear Door				
Part Number - Cabinet Width			Description Door Height (U)	Shipping Weight lb (kg)
23.6" W 600 mm	27.6" W 700 mm	31.5" W 800 mm		
39070-X00	39070-X11	39070-X22	42	64 (29.0)
39070-X01	39070-X12	39070-X23	43	65 (29.5)
39070-X02	39070-X13	39070-X24	44	66 (29.9)
39070-X03	39070-X14	39070-X25	45	68 (30.8)
39070-X04	39070-X15	39070-X26	46	69 (31.3)
39070-X05	39070-X16	39070-X27	47	70 (31.8)
39070-X06	39070-X17	39070-X28	48	72 (32.7)
39070-X07	39070-X18	39070-X29	49	73 (33.1)
39070-X08	39070-X19	39070-X30	50	74 (33.6)
39070-X09	39070-X20	39070-X31	51	76 (34.5)
39070-X10	39070-X21	39070-X32	52	77 (34.9)

X=Color: C=Black, E=Glacier White. Shipping Weights are for 800 mm doors.

Lock Kit for F-Series TeraFrame Single Solid Rear Door				
Part Number		Latch Type	Description Door Height (U)	Shipping Weight lb (kg)
Keyed	Combination and Keyed			
39073-C00	39073-C01	Single-Point	All	2 (0.9)
39074-C00	39075-C00	Two-Point	42	4 (1.8)
39074-C01	39075-C01	Two-Point	43	4 (1.8)
39074-C02	39075-C02	Two-Point	44	4 (1.8)
39074-C03	39075-C03	Two-Point	45	4 (1.8)
39074-C04	39075-C04	Two-Point	46	5 (2.3)
39074-C05	39075-C05	Two-Point	47	5 (2.3)
39074-C06	39075-C06	Two-Point	48	5 (2.3)
39074-C07	39075-C07	Two-Point	49	5 (2.3)
39074-C08	39075-C08	Two-Point	50	5 (2.3)
39074-C09	39075-C09	Two-Point	51	5 (2.3)
39074-C10	39075-C10	Two-Point	52	5 (2.3)

Color is Black. Lock Kit includes swing handle, latch, lock, keys and installation hardware.

Electronic Lock Kit for F-Series TeraFrame Single Perforated Front Door				
Part Number		Latch Type	Description Door Height (U)	Shipping Weight lb (kg)
System 1000	System 1500			
39223-C00	39223-C01	Single-Point	All	3 (1.4)
39227-C00	39230-C00	Two-Point	42	5 (2.3)
39227-C01	39230-C01	Two-Point	43	5 (2.3)
39227-C02	39230-C02	Two-Point	44	5 (2.3)
39227-C03	39230-C03	Two-Point	45	5 (2.3)
39227-C04	39230-C04	Two-Point	46	5 (2.3)
39227-C05	39230-C05	Two-Point	47	5 (2.3)
39227-C06	39230-C06	Two-Point	48	6 (2.7)
39227-C07	39230-C07	Two-Point	49	6 (2.7)
39227-C08	39230-C08	Two-Point	50	6 (2.7)
39227-C09	39230-C09	Two-Point	51	6 (2.7)
39227-C10	39230-C10	Two-Point	52	6 (2.7)

System 1000 handle is silver-colored, latch plate is black. System 1500 handle and plate are black. Lock kit includes a standalone programmable handle, mounting plate, latch and installation hardware.

800-834-4969 in U.S. & Canada • [www.chatsworth.com](http://www.chatsworth.com)



CHATSWORTH PRODUCTS

+1-800-834-4969

[techsupport@chatsworth.com](mailto:techsupport@chatsworth.com)  
[www.chatsworth.com](http://www.chatsworth.com)

# Product Cut Sheet

## F-SERIES TERAFRAME® GEN 3 CABINET SYSTEM SERVICE PARTS

### Standard Top Panel

Solid single-piece top panel with large brush-sealed cable openings in each corner contains airflow within the cabinet while allowing cables to enter/exit the top panel.

#### Key Features:

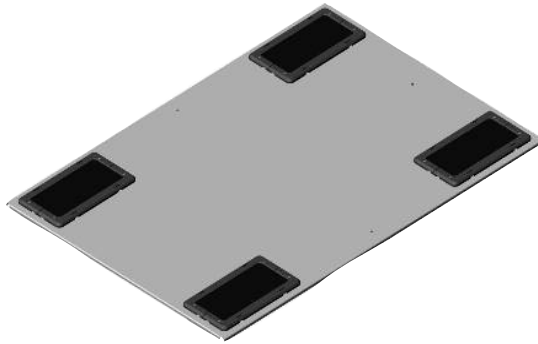
- Standard Top Panel with brush sealed cable openings
- Use in traditional hot aisle/cold aisle environments or with aisle containment for front-to-rear airflow through the cabinet; not compatible with Vertical Exhaust Duct
- One-piece design for easy installation or removal
- Four cable openings, one per corner, are 4.5"W x 9"D (114 mm x 228 mm) without cover, sized for large power plugs
- Includes removable brush covers over cable openings, protects cables as they pass through top panel, provides a 3.9"W x 8.8"D (99 mm x 223 mm) pass through area for cables
- Brush cover is two halves that snap together around cables and forms a seal
- Tool-less installation, drop in design with integrated spring button secures top panel to the cabinet frame without additional installation hardware
- Integrated grounding tab to electrically bond the top panel to cabinet frame with included jumper

#### Specifications:

- Includes: Top panel with brush covers, ground jumper
- Material: Steel top panel; brushes are plastic
- Finish: Black or Glacier White; brushes are black

#### Ordering:

- Select part number to match the width, depth and color of the cabinet



Standard Top Panel with Brushes				
Part Number - Cabinet Width			Cabinet Frame Depth in (mm)	Shipping Weight lb (kg)
23.6"W 600 mm	27.6"W 700 mm	31.5"W 800 mm		
39145-X00	39145-X17	39145-X34	31.5 (800)	18 (8.2)
39145-X01	39145-X18	39145-X35	32.5 (825)	19 (8.6)
39145-X02	39145-X19	39145-X36	33.5 (850)	20 (9.1)
39145-X03	39145-X20	39145-X37	34.4 (875)	20 (9.1)
39145-X04	39145-X21	39145-X38	35.4 (900)	21 (9.5)
39145-X05	39145-X22	39145-X39	36.4 (925)	21 (9.5)
39145-X06	39145-X23	39145-X40	37.4 (950)	22 (10.0)
39145-X07	39145-X24	39145-X41	38.4 (975)	23 (10.4)
39145-X08	39145-X25	39145-X42	39.4 (1000)	23 (10.4)
39145-X09	39145-X26	39145-X43	40.4 (1025)	24 (10.9)
39145-X10	39145-X27	39145-X44	41.3 (1050)	24 (10.9)
39145-X11	39145-X28	39145-X45	42.3 (1075)	25 (11.3)
39145-X12	39145-X29	39145-X46	43.3 (1100)	26 (11.8)
39145-X13	39145-X30	39145-X47	44.3 (1125)	26 (11.8)
39145-X14	39145-X31	39145-X48	45.3 (1150)	27 (12.2)
39145-X15	39145-X32	39145-X49	46.3 (1175)	27 (12.2)
39145-X16	39145-X33	39145-X50	47.2 (1200)	28 (12.7)

X=color: C=Black, E=Glacier White. Shipping Weights are for 800 mm tops.

800-834-4969 in U.S. & Canada • [www.chatsworth.com](http://www.chatsworth.com)



CHATSWORTH PRODUCTS

+1-800-834-4969

[techsupport@chatsworth.com](mailto:techsupport@chatsworth.com)  
[www.chatsworth.com](http://www.chatsworth.com)

# Product Cut Sheet

## F-SERIES TERAFRAME® GEN 3 CABINET SYSTEM SERVICE PARTS

### Two-Piece Top Panel

Solid two-piece top panel with large brush-sealed cable openings in each corner contains airflow within the cabinet. While allowing cables to enter/exit the top panel, and can be upgraded for future use with the Vertical Exhaust Duct.

#### Key Features:

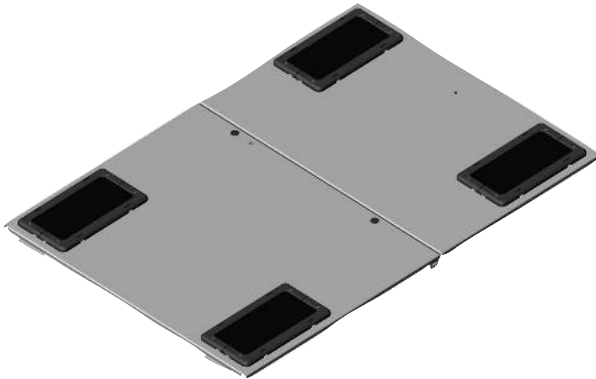
- Two-Piece Top Panel with brush sealed cable openings
- Use in traditional hot aisle/cold aisle environments that may need to transition to cabinet containment using Vertical Exhaust Duct at a future date
- Two-piece design allows easy removal of back piece for future addition of Vertical Exhaust Duct
- Four cable openings, one per corner, are 4.5"W x 9"D (114 mm x 228 mm) without cover, sized for large power plugs
- Includes removable brush covers over cable openings, protects cables as they pass through top panel, provides a 3.9"W x 8.8"D (99 mm x 223 mm) pass through area for cables
- Brush cover is two halves that snap together around cables and forms a seal
- Front half of panel secures with hardware to top of frame, back half is tool-less drop in design with integrated spring buttons to secure the top panel to the cabinet frame
- Integrated grounding tab to electrically bond the top panel to cabinet frame with included jumper

#### Specifications:

- Includes: Top panel with brush covers, installation hardware, ground jumper
- Material: Steel top panels; brushes are plastic
- Finish: Black or Glacier White; brushes are black

#### Ordering:

- Select part number to match the width, depth and color of the cabinet



Two-Piece Top Panel with Brushes				
Part Number - Cabinet Width			Cabinet Frame Depth in (mm)	Shipping Weight lb (kg)
23.6"W 600 mm	27.6"W 700 mm	31.5"W 800 mm		
39140-X10	39140-X27	39140-X44	41.3 (1050)	23 (10.4)
39140-X11	39140-X28	39140-X45	42.3 (1075)	24 (10.9)
39140-X12	39140-X29	39140-X46	43.3 (1100)	24 (10.9)
39140-X13	39140-X30	39140-X47	44.3 (1125)	25 (11.3)
39140-X14	39140-X31	39140-X48	45.3 (1150)	26 (11.8)
39140-X15	39140-X32	39140-X49	46.3 (1175)	26 (11.8)
39140-X16	39140-X33	39140-X50	47.2 (1200)	27 (12.2)

X=Color: C=Black, E=Glacier White. Shipping Weights are for 800 mm tops.

800-834-4969 in U.S. & Canada • [www.chatsworth.com](http://www.chatsworth.com)



CHATSWORTH PRODUCTS

+1-800-834-4969

[techsupport@chatsworth.com](mailto:techsupport@chatsworth.com)  
[www.chatsworth.com](http://www.chatsworth.com)

# Product Cut Sheet

## F-SERIES TERAFRAME® GEN 3 CABINET SYSTEM SERVICE PARTS

### Vertical Exhaust Duct

Vertical Exhaust Duct attaches to the top of the cabinet to provide a sealed pathway for hot air from the top of the cabinet to an overhead drop ceiling as part of a closed hot air return.

#### Key Features:

- Upgrades installed cabinet in traditional hot aisle/cold aisle environment from front-to-rear airflow to front-to-top airflow
- Used with Solid Rear Door, Bottom Panel, Air Dam, Snap-In Filler Panels and Air Director to completely contain hot exhaust air, and remove it from the cabinet and room
- Fits cabinets that are 41.3"D (1050 mm) or deeper that have a two-piece Server top panel
- Two-piece duct adjusts in height to span the distance between the top of the cabinet and the overhead drop ceiling; available in three sizes (see description in order table)
- Features easy height adjustment, has a flexible seal at the top to accommodate variations in the drop ceiling
- Includes a brush sealed cable opening on the back of the duct to allow power cords to enter the back of the cabinet when the duct is installed

#### Specifications:

- Includes: Vertical Exhaust Duct and installation hardware
- Material: Steel duct panels; top seal and duct corners are plastic
- Finish: Black or Glacier White; seal and corners are black

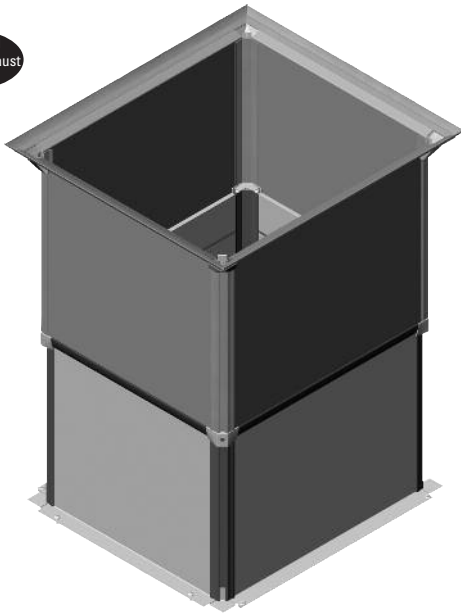
#### Ordering:

- Select part number to match the width and color of the cabinet

Two-Piece Top Panel with Brushes				
Part Number - Cabinet Width			Duct Height in (mm)	Shipping Weight lb (kg)
23.6"W 600 mm	27.6"W 700 mm	31.5"W 800 mm		
39177-X00	39177-X03	39177-X06	14-20 (356-508)	17 (7.7)
39177-X01	39177-X04	39177-X07	20-34 (508-863)	25 (11.3)
39177-X02	39177-X05	39177-X08	34-60 (863-1523)	43 (19.5)

X=color: 7=Black, E=Glacier White. Shipping Weights are for 800 mm ducts.

Patented  
Vertical Exhaust  
Duct



U.S. patents apply to this product. For details visit [www.chatsworth.com/patents](http://www.chatsworth.com/patents)

800-834-4969 in U.S. & Canada • [www.chatsworth.com](http://www.chatsworth.com)



CHATSWORTH PRODUCTS

+1-800-834-4969

[techsupport@chatsworth.com](mailto:techsupport@chatsworth.com)  
[www.chatsworth.com](http://www.chatsworth.com)

# Product Cut Sheet

## F-SERIES TERAFRAME® GEN 3 CABINET SYSTEM SERVICE PARTS

### Side Panel for 6-Slide Cabinet

Solid side panels protect equipment and contain airflow within the cabinet. Brushed panels allow cables to enter or exit the side of the cabinet while minimizing air leakage.

#### Key Features:

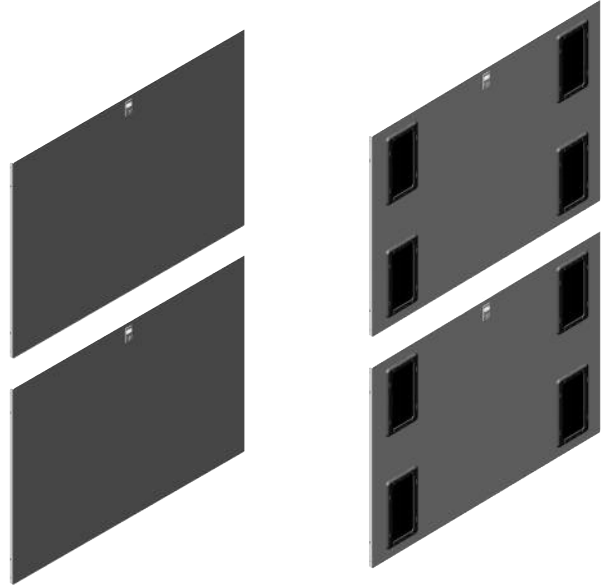
- Attaches to cabinets with a six slide frame, which have three rail supports (slides) on each side: top, middle and bottom slides
- Two-piece design with separate top and bottom panels for easier handling
- Two styles available: solid panels or panels with brush sealed cable openings
- Panels with brushes have eight cable openings per side, four per panel, one per corner, are 4.5"W x 9"D (114 mm x 228 mm) without cover, sized for large power plugs
- Brush cover protects cables as they pass through the cable openings in the side panel, provides a 3.9"W x 8.8"D (99 mm x 223 mm) pass through area for cables
- Brush cover is two halves that snap together around cables and forms a seal
- Tool-less removal, with integrated locking spring latch secures the side panels to the cabinet frame
- Integrated grounding tabs to electrically bond the side panels to the cabinet frame with included jumpers

#### Specifications:

- Includes: One side panel (top and bottom panels, with brushes when selected), ground jumpers
- Material: Steel panels; brushes are plastic
- Finish: Black or Glacier White; brushes are black

#### Ordering:

- Select part number to match the height, depth and color of the cabinet



Part Number - 6-Slide Cabinet Side Panels														
Frame Style		Height (U)											Cabinet Frame Depth in (mm)	Shipping Weights lb (kg)
Solid	Brush	42	43	44	45	46	47	48	49	50	51	52		
39046	39047	-X00	-X17	-X34	-X51	-X68	-X85	-XAC	-XAY	-XBU	-XCP	-XDL	31.5 (800)	37 (16.8)
		-X01	-X18	-X35	-X52	-X69	-X86	-XAD	-XBA	-XBV	-XCR	-XDM	32.5 (825)	39 (17.7)
		-X02	-X19	-X36	-X53	-X70	-X87	-XAE	-XBB	-XBW	-XCT	-XDN	33.5 (850)	40 (18.1)
		-X03	-X20	-X37	-X54	-X71	-X88	-XAF	-XBC	-XBY	-XCU	-XDP	34.4 (875)	41 (18.6)
		-X04	-X21	-X38	-X55	-X72	-X89	-XAG	-XBD	-XCA	-XCV	-XDR	35.4 (900)	42 (19.1)
		-X05	-X22	-X39	-X56	-X73	-X90	-XAH	-XBE	-XCB	-XCW	-XDT	36.4 (925)	44 (20.0)
		-X06	-X23	-X40	-X57	-X74	-X91	-XAJ	-XBF	-XCC	-XCY	-XDU	37.4 (950)	45 (20.4)
		-X07	-X24	-X41	-X58	-X75	-X92	-XAK	-XBG	-XCD	-XDA	-XDV	38.4 (975)	46 (20.9)
		-X08	-X25	-X42	-X59	-X76	-X93	-XAL	-XBH	-XCE	-XDB	-XDW	39.4 (1000)	47 (21.3)
		-X09	-X26	-X43	-X60	-X77	-X94	-XAM	-XBJ	-XCF	-XDC	-XDY	40.4 (1025)	49 (22.2)
		-X10	-X27	-X44	-X61	-X78	-X95	-XAN	-XBK	-XCG	-XDD	-XEA	41.3 (1050)	50 (22.7)
		-X11	-X28	-X45	-X62	-X79	-X96	-XAP	-XBL	-XCH	-XDE	-XEB	42.3 (1075)	51 (23.1)
		-X12	-X29	-X46	-X63	-X80	-X97	-XAR	-XBM	-XCJ	-XDF	-XEC	43.3 (1100)	52 (23.6)
		-X13	-X30	-X47	-X64	-X81	-X98	-XAT	-XBN	-XCK	-XDG	-XED	44.3 (1125)	54 (24.5)
		-X14	-X31	-X48	-X65	-X82	-X99	-XAU	-XBP	-XCL	-XDH	-XEE	45.3 (1150)	55 (24.9)
		-X15	-X32	-X49	-X66	-X83	-XAA	-XAV	-XBR	-XCM	-XDJ	-XEF	46.3 (1175)	56 (25.4)
-X16	-X33	-X50	-X67	-X84	-XAB	-XAW	-XBT	-XCN	-XDK	-XEG	47.2 (1200)	57 (25.9)		

X=color: C=Black, E=Glacier White. Shipping Weights are for 52U panels.

800-834-4969 in U.S. & Canada • [www.chatsworth.com](http://www.chatsworth.com)



CHATSWORTH PRODUCTS

+1-800-834-4969

[techsupport@chatsworth.com](mailto:techsupport@chatsworth.com)  
[www.chatsworth.com](http://www.chatsworth.com)



# Product Cut Sheet

## F-SERIES TERAFRAME® GEN 3 CABINET SYSTEM SERVICE PARTS

### Side Panel for 4-Slide Cabinet

Solid side panels protect equipment and contain airflow within the cabinet. Brushed panels allow cables to enter or exit the side of the cabinet while minimizing air leakage.

#### Key Features:

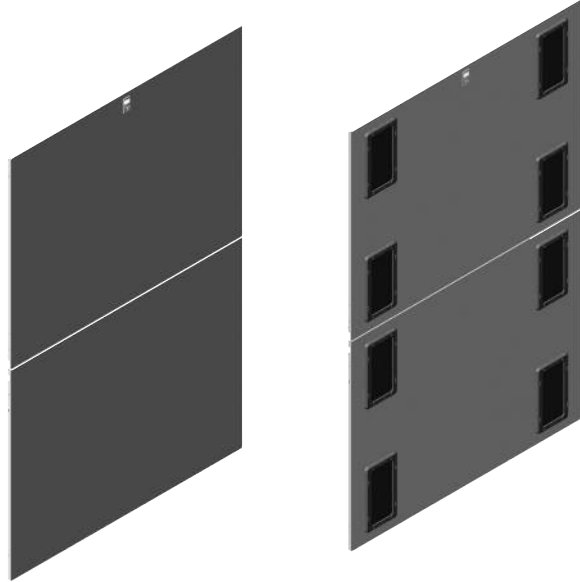
- Attaches to cabinets with a four slide frame, which have two rail supports (slides) on each side: top and bottom slides only
- Two-piece design with top and bottom halves for easier handling
- Two styles available: solid panels or panels with brush sealed cable openings
- Panels with brushes have eight cable openings per side, four per half-height panel, one per corner, are 4.5"W x 9"D (114 mm x 228 mm) without cover, sized for large power plugs
- Brush cover protects cables as they pass through the cable openings in the side panel, provides a 3.9"W x 8.8"D (99 mm x 223 mm) pass through area for cables
- Brush cover is two halves that snap together around cables and forms a seal
- Tool-less removal, drop in design with integrated locking spring latch secures the side panel to the cabinet frame
- Integrated grounding tabs to electrically bond the side panel to cabinet frame with included jumpers

#### Specifications:

- Includes: One side panel (top and bottom panels, with brushes when selected), ground jumpers
- Material: Steel panels; brushes are plastic
- Finish: Black or Glacier White; brushes are black

#### Ordering:

- Select part number to match the height, depth and color of the cabinet



Part Number - 4-Slide Cabinet Side Panels														
Frame Style		Height (U)											Cabinet Frame Depth in (mm)	Shipping Weights lb (kg)
Solid	Brush	42	43	44	45	46	47	48	49	50	51	52		
39040	39043	-X00	-X17	-X34	-X51	-X68	-X85	-XAC	-XAY	-XBU	-XCP	-XDL	31.5 (800)	44 (20.0)
		-X01	-X18	-X35	-X52	-X69	-X86	-XAD	-XBA	-XBV	-XCR	-XDM	32.5 (825)	46 (20.9)
		-X02	-X19	-X36	-X53	-X70	-X87	-XAE	-XBB	-XBW	-XCT	-XDN	33.5 (850)	47 (21.3)
		-X03	-X20	-X37	-X54	-X71	-X88	-XAF	-XBC	-XBY	-XCU	-XDP	34.4 (875)	49 (22.2)
		-X04	-X21	-X38	-X55	-X72	-X89	-XAG	-XBD	-XCA	-XCV	-XDR	35.4 (900)	50 (22.7)
		-X05	-X22	-X39	-X56	-X73	-X90	-XAH	-XBE	-XCB	-XCW	-XDT	36.4 (925)	52 (23.6)
		-X06	-X23	-X40	-X57	-X74	-X91	-XAJ	-XBF	-XCC	-XCY	-XDU	37.4 (950)	53 (24.0)
		-X07	-X24	-X41	-X58	-X75	-X92	-XAK	-XBG	-XCD	-XDA	-XDV	38.4 (975)	55 (24.9)
		-X08	-X25	-X42	-X59	-X76	-X93	-XAL	-XBH	-XCE	-XDB	-XDW	39.4 (1000)	56 (25.4)
		-X09	-X26	-X43	-X60	-X77	-X94	-XAM	-XBJ	-XCF	-XDC	-XDY	40.4 (1025)	58 (26.3)
		-X10	-X27	-X44	-X61	-X78	-X95	-XAN	-XBK	-XCG	-XDD	-XEA	41.3 (1050)	59 (26.8)
		-X11	-X28	-X45	-X62	-X79	-X96	-XAP	-XBL	-XCH	-XDE	-XEB	42.3 (1075)	61 (27.7)
		-X12	-X29	-X46	-X63	-X80	-X97	-XAR	-XBM	-XCJ	-XDF	-XEC	43.3 (1100)	62 (28.1)
		-X13	-X30	-X47	-X64	-X81	-X98	-XAT	-XBN	-XCK	-XDG	-XED	44.3 (1125)	64 (29.0)
		-X14	-X31	-X48	-X65	-X82	-X99	-XAU	-XBP	-XCL	-XDH	-XEE	45.3 (1150)	65 (29.5)
		-X15	-X32	-X49	-X66	-X83	-XAA	-XAV	-XBR	-XCM	-XDJ	-XEF	46.3 (1175)	67 (30.4)
-X16	-X33	-X50	-X67	-X84	-XAB	-XAW	-XBT	-XCN	-XDK	-XEG	47.2 (1200)	68 (30.8)		

X=color: C=Black, E=Glacier White. Shipping Weights are for 52U panels.

800-834-4969 in U.S. & Canada • www.chatsworth.com



CHATSWORTH PRODUCTS

+1-800-834-4969

techsupport@chatsworth.com  
www.chatsworth.com



# Product Cut Sheet

## F-SERIES TERAFRAME® GEN 3 CABINET SYSTEM SERVICE PARTS

### Equipment Rail Assembly

One pair of equipment mounting rails used to support 19" EIA rack-mount equipment inside the cabinet.

#### Key Features:

- Provides support for 19" EIA-310-E compliant rack-mount equipment
- Rack-mount spaces (U) are marked and numbered on the rails to easily locate equipment
- Square-punched equipment mounting holes for snap-in cage nuts allow mounting hardware to change to match equipment requirements; includes (25) M6 cage nuts and screws, order additional mounting hardware separately
- Rails slide front-to-rear within the cabinet; adjust position to match the depth of equipment
- Easy adjustment, loosen three bolts to slide rails along supports, supports are marked with a scale for quick positioning and alignment
- Solid profile helps block unwanted airflow around equipment; accessory Air Dam and Bottom Panel can be added to completely block airflow around rails
- Wider rails have four 5.5"H x 2.0"W (140 mm x 51 mm) cable pass-through openings to support front-to-rear cabling; an accessory snap-in grommet kit is also available to seal the openings
- Attachment points along the sides of the rails support cable or thermal management accessories

#### Specifications:

- Includes: one pair of mounting rails, installation hardware, (25) M6 cage nuts and screws
- Material: Steel
- Finish: Black or Glacier White, zinc hardware

#### Ordering:

- Select part number to match the width, usable height and color of the cabinet
- Order additional equipment mounting hardware (cage nuts) and rail grommet kits separately

Equipment Rail Assembly				
Part Number - Cabinet Width			Description Height (U)	Shipping Weight lb (kg)
23.6"W 600 mm	27.6"W 700 mm	31.5"W 800 mm		
39030-X00	39031-X00	39032-X00	42	31 (14.1)
39030-X01	39031-X01	39032-X01	43	32 (14.5)
39030-X02	39031-X02	39032-X02	44	33 (15.0)
39030-X03	39031-X03	39032-X03	45	34 (15.4)
39030-X04	39031-X04	39032-X04	46	35 (15.9)
39030-X05	39031-X05	39032-X05	47	35 (15.9)
39030-X06	39031-X06	39032-X06	48	36 (16.3)
39030-X07	39031-X07	39032-X07	49	37 (16.8)
39030-X08	39031-X08	39032-X07	50	38 (17.2)
39030-X09	39031-X09	39032-X09	51	38 (17.2)
39030-X10	39031-X10	39032-X10	52	39 (17.7)

X=Color: C=Black, E=Glacier White. Shipping Weights are for 800 mm rails.

Equipment Mounting Hardware		
Part Number	Description	Shipping Weight lb (kg)
12637-001	M6, Cage Nuts and Screws, 25 Pack	1 (0.5)
12638-001	#10-32, Cage Nuts and Screws, 25 Pack	1 (0.5)
12639-001	#12-24 Cage Nuts and Screws, 25 Pack	1 (0.5)

Note: Each Equipment Rail Assembly includes (25) M6 Cage Nuts and Screws.



39030-X00



39031-X00



39032-X00



800-834-4969 in U.S. & Canada • [www.chatsworth.com](http://www.chatsworth.com)



CHATSWORTH PRODUCTS

+1-800-834-4969

[techsupport@chatsworth.com](mailto:techsupport@chatsworth.com)  
[www.chatsworth.com](http://www.chatsworth.com)

# Product Cut Sheet

## F-SERIES TERAFRAME® GEN 3 CABINET SYSTEM SERVICE PARTS

### Equipment Rail Grommet Kit

Plastic grommets used to seal the cable openings in Equipment Rail Assemblies in 27.6"W (700 mm) and 31.5"W (800 mm) cabinets.

#### Key Features:

- Snap in plastic grommet seals cable openings in Equipment Rail Assemblies in 27.6"W (700 mm) and 31.5"W (800 mm) cabinets
- Blocks airflow through cable openings in rails that are not used to pass cables
- Cut grommets to pass cables through while minimizing airflow leakage

#### Specifications:

- Includes: Eight grommets
- Material: Plastic
- Finish: Black

#### Ordering:

- Order one kit for each pair of equipment mounting rails



Equipment Rail Grommet Kit		
Part Number	Description	Shipping Weight lb (kg)
39133-001	Equipment Rail Grommets, 8 Pack	2 (0.9)

Note: Black. Use with rails in 27.6"W (700 mm) or 31.5"W (800 mm) cabinets.

### Bottom Panel

Solid bottom panels with two brush sealed cable openings allow cables to enter or exit the bottom of the cabinet while containing hot air within the cabinet.

#### Key Features:

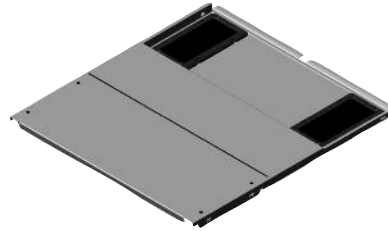
- Bottom Panel with brush sealed cable openings
- Use to seal the bottom of the cabinet to contain and control airflow in cabinets fitted with the Vertical Exhaust Duct; used in combination with Air Dam accessory
- Two-piece design for easy installation, adjusts in depth to fit cabinet
- Lower rear panel provides extra interior space at the back of the cabinet for taller PDU's
- Two cable openings, in back corners, are 4.5"W x 9"D (114 mm x 228 mm) without cover, sized for large power plugs
- Brush covers over cable openings, protects cables as they pass through bottom panel, provides a 3.9"W x 8.8"D (99 mm x 223 mm) pass through area for cables
- Brush cover is two halves that snap together around cables and form a seal

#### Specifications:

- Includes: Bottom panel with brush covers, installation brackets and hardware
- Material: Steel bottom panel; brushes are plastic
- Finish: Black or Glacier White; brushes are black

#### Ordering:

- Select part number to match the width and color of the cabinet
- Fits cabinet frames that are 39.4"D (1000 mm) and deeper



Bottom Panel with Brush				
Part Number - Cabinet Width			Depth in (mm)	Shipping Weight lb (kg)
23.6"W 600 mm	27.6"W 700 mm	31.5"W 800 mm		
39132-X00	39132-X01	39132-X02	≥ 39.4 (1000)	30 (13.6)

X=Color: C=Black, E=Glacier White. Shipping Weights are for 800 mm kits.

### Air Director

Air Director is an angled panel used at the back of cabinets with Vertical Exhaust Duct top panels to guide hot air towards the top of the cabinet.

#### Key Features:

- Universal, three piece design adjusts in width to fit all cabinets
- Attaches to the bottom slide on the cabinet, adjusts in depth

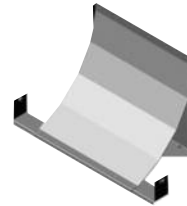
#### Specifications:

- Includes: director, installation hardware
- Material: Steel
- Finish: Black or Glacier White

#### Ordering:

- Select part number to match color of the cabinet

Patented  
Vertical Exhaust  
Duct



Air Director		
Part Number	Description	Shipping Weight lb (kg)
39107-X00	Air Director	10 (4.5)

X=Color: C=Black, E=Glacier White.

U.S. patents apply to this product. For details visit [www.chatsworth.com/patents](http://www.chatsworth.com/patents)

800-834-4969 in U.S. & Canada • [www.chatsworth.com](http://www.chatsworth.com)



CHATSWORTH PRODUCTS

+1-800-834-4969

techsupport@chatsworth.com  
[www.chatsworth.com](http://www.chatsworth.com)

# Product Cut Sheet

## F-SERIES TERAFRAME® GEN 3 CABINET SYSTEM SERVICE PARTS

### Caster Kit

#### Key Features:

- Caster Kit is a set of four non-locking casters; two fixed, two swivel
- Easily move the cabinet into location
- Supports up to 2250 lb (1020 kg) in the 6-slide frame
- Supports up to 2000 lb (907.2 kg) in the 4-slide frame
- Attaches to the bottom of the cabinet, must be installed before cabinet is loaded with equipment



#### Specifications:

- Includes: 4 casters, mounting brackets, installation hardware
- Material: Steel brackets, plastic wheels
- Finish: Zinc coating on bracket; wheels are black

Caster Kit		
Part Number	Description	Shipping Weight lb (kg)
39029-001	Casters, 2 Fixed, 2 Swivel, with Hardware	7 (3.2)

### Floor Mounting Kit

#### Key Features:

- Floor Mounting Kit is a set of four L-shaped brackets used to secure the cabinet to the floor
- Attaches to the outside of the cabinet frame for easy access
- Secure to the floor with 3/8" or M10 installation hardware (ordered separately)



#### Specifications:

- Includes: 4 floor mounting brackets, installation hardware
- Material: Steel
- Finish: Zinc coating

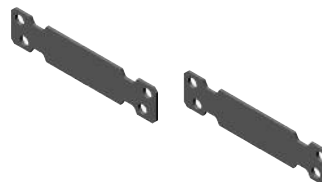
Floor Mounting Kit		
Part Number	Description	Shipping Weight lb (kg)
25171-001	Floor Mounting Kit, Zinc	3 (1.4)

Order floor installation hardware separately.

### Baying Assembly Kit

#### Key Features:

- Baying Assembly Kit is a set of two brackets used to secure two cabinets that are the same depth side-by-side
- Two sets of holes allow brackets to bay cabinets directly side-by-side or center 23.6"W (600 mm) cabinets over 24"W (610 mm) floor tiles or bay cabinets
- Easy installation without removing doors



#### Specifications:

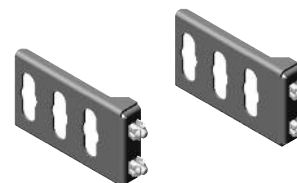
- Includes: 2 brackets, installation hardware
- Material: Steel
- Finish: Finish: Black only

Baying Assembly Kit		
Part Number	Description	Shipping Weight lb (kg)
39125-C01	Bay Assembly Kit, Black	2 (0.9)

### Standard PDU Bracket Assembly

#### Key Features:

- Standard PDU Bracket Assembly is a pair of brackets that attach to the back posts on the cabinet frame and support up to two vertical PDU (Power Distribution Units) in the back corner of the cabinet
- Supports two 2.2"W (51 mm) PDU side-by-side or one PDU up to 3.5"W (89 mm).
- Tool-less mounting on 61.25" (1556 mm) centers in all cabinets
- Tool-less mounting on 64.75" (1645 mm) centers in cabinets 44U or taller
- Bracket is 4"W (102 mm)



#### Specifications:

- Includes: 2 brackets, installation hardware
- Material: Steel
- Finish: Finish: Black only

Standard PDU Bracket Assembly		
Part Number	Description	Shipping Weight lb (kg)
39110-C01	Standard PDU Bracket Assembly, Black	2 (0.9)

800-834-4969 in U.S. & Canada • [www.chatsworth.com](http://www.chatsworth.com)



CHATSWORTH PRODUCTS

While every effort has been made to ensure the accuracy of all information, CPI does not accept liability for any errors or omissions and reserves the right to change information and descriptions of listed services and products.

©2015 Chatsworth Products, Inc. All rights reserved. Chatsworth Products, CPI, CPI Passive Cooling, eConnect, MegaFrame, Saf-T-Grip, Seismic Frame, SlimFrame, TeraFrame, GlobalFrame, Cube-IT Plus, Evolution, OnTrac, QuadraRack and Velocity are federally registered trademarks of Chatsworth Products. Simply Efficient is a trademark of Chatsworth Products. All other trademarks belong to their respective companies. Rev.5 06/15