

Product Cut Sheet

BUILD TO SPEC KIT (HAC) SOLUTION SERVICE PARTS

Service Parts

This document lists service parts for the Build To Spec Kit Hot Aisle Containment (HAC) Solution including components of the Built To Spec Kit (33000_CUT) and the Full Height Cabinet Blanking Panel (33002_CUT). Service parts include extrusions, brackets, panels and edge seals and are used as replacement parts or to update the solution as cabinets/applications change.



Fully Assembled Built To Spec (HAC) Solution.

Frame Extrusion from Build To Spec Kit

Primary structural component used to create the frame for the Build To Spec Kit Hot Aisle Containment (HAC) Solution duct (see 33000_CUT).

Key Features:

- Used as horizontal or vertical structure of the duct
- Cut to length to match site requirements
- Assemble and install with common tools; brackets and hardware ordered separately

Specifications:

- Includes: (2) each, 94"L (2387 mm) frame extrusions
- Material: aluminum extrusion
- Finish: Black or Glacier White

Ordering:

- Select part number to match the color of the duct and/or cabinets

Frame Extrusion from Build To Spec Kit			
Part Number		Description	Shipping Weight lb (kg)
Black	Glacier White		
33006-701	33006-E01	94"L (2387 mm), Pack of 2	30 (13.6)

Note: Does not include assembly brackets or hardware.



Top View

800-834-4969 in U.S. & Canada • www.chatsworth.com



CHATSWORTH PRODUCTS

1-800-834-4969
www.chatsworth.com

Product Cut Sheet

BUILD TO SPEC KIT (HAC) SOLUTION SERVICE PARTS

Panel Support Extrusion from Full Height Cabinet Blanking Panel

Primary structural component used to create the frame for Full Height Cabinet Blanking Panels used with the Build To Spec Kit Hot Aisle Containment (HAC) Solution duct (See 33002_CUT).

Key Features:

- Used as the vertical structure of the blanking panel
- Cut to length to match site requirements
- Assemble and install with common tools; brackets and hardware ordered separately

Specifications:

- Includes: (2) each, 94"L (2387 mm) panel support extrusions
- Material: aluminum extrusion
- Finish: Black or Glacier White

Ordering:

- Select part number to match the color of the duct and/or cabinets

Panel Support Extrusion from Full Height Cabinet Blanking Panel			
Part Number		Description	Shipping Weight lb (kg)
Black	Glacier White		
33004-701	33004-E01	94"L (2387 mm), Pack of 2	5 (2.3)
33004-702	3004-E02	94"L (2387 mm), Pack of 10	50 (22.7)

Note: Does not include assembly brackets or hardware.



Top View

Polycarbonate Panel from Build To Spec Kit and Full Height Cabinet Blanking Panel

Panel material used with the Build To Spec Kit Hot Aisle Containment (HAC) Solution duct and Full Height Cabinet Blanking Panel (See 33000_CUT and 33002_CUT).

Key Features:

- Translucent duct panels allow light to enter the contained aisle
- Trim width and length to match site requirements
- Attaches to Frame Extrusion with Panel Retention Clips, ordered separately
- Attaches to Full Height Filler Panel Support Extrusion with Universal Bulb Seal, ordered separately

Specifications:

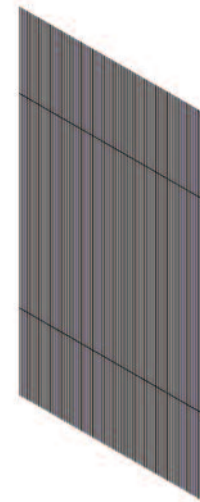
- Includes: (2) each, .23" (6 mm) thick, 48"W (1219 mm) x 96"L (2387 mm) panels
- Material: polycarbonate sheet
- Surface Burning Characteristics: ASTM E-84 (UL-723) Flame Spread Index = 0, Smoke Developed Index <=85.
- Finish: clear (translucent)

Ordering:

- Select part number to match the number of panels required

Polycarbonate Panel from Build To Spec Kit and Full Height Cabinet Blanking Panel		
Part Number	Description	Shipping Weight lb (kg)
33005-001	Panel, 48"W (1219 mm) x 96"L (2387 mm), Pack of 2	128 (58)
33005-002	Panel, 48"W (1219 mm) x 96"L (2387 mm), Pack of 10	200 (91)

Note: For precision cuts, CPI recommends the Corrugated Flute Cutter (See 33001_CUT), ordered separately.



800-834-4969 in U.S. & Canada • www.chatsworth.com



CHATSWORTH PRODUCTS

1-800-834-4969
www.chatsworth.com

Product Cut Sheet

BUILD TO SPEC KIT (HAC) SOLUTION SERVICE PARTS

Universal Bulb Seal from Full Height Cabinet Blanking Panel

Edge seal used with Full Height Cabinet Blanking Panel and as an accessory with the Build To Spec Kit Hot Aisle Containment (HAC) Solution duct (See 33002_CUT and 33000_CUT).

Key Features:

- Attaches to Full Height Filler Panel Support Extrusion to hold panel and provide edge seal
- Attaches to Polycarbonate Panel providing an edge seal for drop panels attached to the duct
- Trim length to match site requirements

Specifications:

- Includes: (2) or (10) each, 96"L (2387 mm) bulb seals
- Material: Plastic; bulb is flexible PVC (UL 94HB or UL 94VO), support is rigid PVC (UL 94VO), barbs in support are flexible Alcryl (UL 94HB)
- Flammability Standards: UL 94HB or UL 94VO, see Material
- Finish: Black

Ordering:

- Select part number to match the length required

Universal Bulb Seal from Full Height Cabinet Blanking Panel		
Part Number	Description	Shipping Weight lb (kg)
33003-001	Universal Bulb Seal, 96"L (2438 mm), Pack of 2	4 (1.8)
33003-002	Universal Bulb Seal, 96"L (2438 mm), Pack of 10	21 (9.5)

Note: Does not include assembly brackets or hardware.



Top View

Panel Retention Clips from Build To Spec Kit and Full Height Cabinet Blanking Panel

Clips used to secure Polycarbonate Panels to Frame Extrusion on the Build To Spec Kit Hot Aisle Containment (HAC) Solution and Full Height Cabinet Blanking Panel (See 33000_CUT and 33002_CUT).

Key Features:

- Attaches Polycarbonate Panel to the Frame Extrusion
- Easy snap in installation and removal; no special tools required

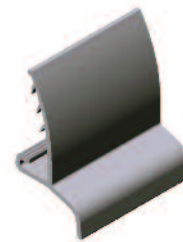
Specifications:

- Includes: (12) each, retention clips
- Material: Plastic; body is rigid PVC (UL 94VO), barbs on body are flexible Alcryl (UL 94HB)
- Flammability Standards: UL 94HB or UL 94VO, see Material
- Finish: Clear

Ordering:

- Select part number to match the quantity required

Panel Retention Clips from Build To Spec Kit and Full Height Cabinet Blanking Panel		
Part Number	Description	Shipping Weight lb (kg)
33007-001	Panel Retention Clips, Pack of 12	4 (1.8)



800-834-4969 in U.S. & Canada • www.chatsworth.com



CHATSWORTH PRODUCTS

While every effort has been made to ensure the accuracy of all information, CPI does not accept liability for any errors or omissions and reserves the right to change information and descriptions of listed services and products.

©2013 Chatsworth Products, Inc. All rights reserved. CPI, CPI Passive Cooling, GlobalFrame, MegaFrame, Saf-T-Grip, Seismic Frame, SlimFrame, TeraFrame, Cube-iT Plus, Evolution, OnTrac, Velocity and QuadraRack are federally registered trademarks of Chatsworth Products. eConnect and Simply Efficient are trademarks of Chatsworth Products. All other trademarks belong to their respective companies. 12/13