

ZONE CABLING & WIRELESS SYSTEMS



| | |
|------------------------------------|------------|
| Zone Enclosures - Raised Floor | Page 11-4 |
| Zone Enclosures - Drop Ceiling | Page 11-6 |
| Zone Enclosures Service Parts | Page 11-9 |
| Wireless Enclosures - Drop Ceiling | Page 11-10 |
| Wireless Enclosures - Wall-Mounted | Page 11-12 |

ZONE CABLING & WIRELESS ENCLOSURES

When it is time for a network to extend beyond the traditional telecommunications room, CPI Zone Cabling and Wireless Enclosures provide consolidation points that reduce the overall cost of adding or moving network cabling. Working in a partnership with American Access Technologies, Inc., the leading developer of zone cabling and wireless enclosures, CPI offers solutions that include standard-recognized zone cabling practices and several NEMA-rated models that can be used in warehouses, industrial environments and outdoors.

Available in several styles of wall-mount and drop ceiling wireless enclosures, end users are able to use CPI Zone Cabling and Wireless Enclosures to pre-wire a work area, so connections to the rest of the network are closer to network users. Pre-wiring to zone enclosures also makes future connection changes within the zone easier and less disruptive because only cables within the zone are moved, added or changed.

Wireless Enclosures offer added protection and security for wireless access points in any situation. Several models of Wireless Enclosures include locks and durable seals for exterior use, while others are able to easily blend into open office environments with dome covers that limit access to qualified technicians only.

CPI Zone Cabling and Wireless Enclosures feature:

- High-quality construction and design
- Small exterior dimensions to save space in tight areas
- Secure equipment support outside of the data room
- Reduced cost of cable configurations
- Enclosed for security and safety
- UL Listed
- Suitable for low-voltage and active applications
- Can be used in air handling spaces

Telecommunication Enclosures For Zone Cabling & Wireless Applications

In traditional cabling models, cables extend from a centralized telecommunication room to each work area. Cable changes impact the entire length of cable between the central room and the work area and can be disruptive to workers within the workspace.

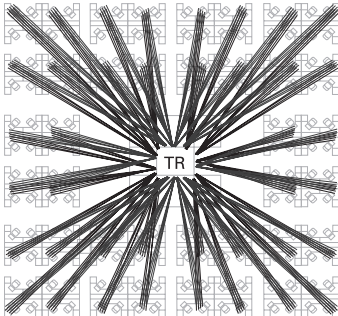
In zone cabling, floor space is divided into zones (typically the area between structural building columns), and an enclosure is placed near the center of the zone to house a consolidation point. Thus, only the cable between the consolidation point and work area is impacted when a network connection is changed, reducing the amount of material, labor and workspace disruption involved in the change.

Alternately, an active component (such as a switch) can be placed within the enclosure, essentially creating a "mini-telecommunication room" within the workspace. When fiber is routed into the enclosure, an easily scalable network is created via the active component. The customer's network is thus positioned to allow fiber to the desktop when desired.

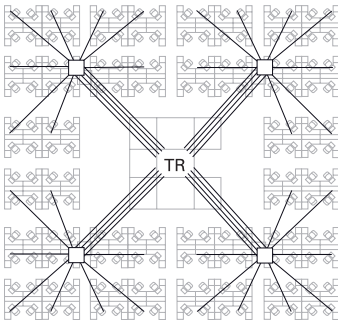
Zone cabling is an ideal solution to support networked areas with high "churn" (such as rented commercial office space, data centers, laboratories, schools, hospitals, retail operations, warehouses and industrial environments) or for use in any building that does not have planned space for a telecommunication room.

Wireless networks eliminate the need for data cabling to each user and are the best solution in large, open areas, like classrooms and meeting rooms. Wireless networks can supplement, overlay or replace traditional networks. The key to an effective wireless network is the positioning of the wireless access point to provide maximum coverage in the workspace. Once locations are defined, wireless enclosures create a secure space for the network connection and the wireless access point.

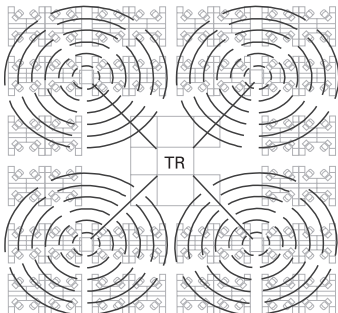
CPI offers Zone Cabling and Wireless Enclosures for use in drop ceilings, access floors and on walls. Also, a special series of wall-mount enclosures made of fiberglass are NEMA rated for use in dusty or wet environments, such as outdoors, in a warehouse or in a light industrial site (not submerged or in hazardous locations). Product applications and model information are given on the following pages.



Traditional, Home Run Wiring



Zone Cabling



Wireless



Raised Floor Enclosures

Raised Floor Enclosures fit under a single 2' x 2' access floor tile. Most models use the access floor tile as a "lid." Enclosures are UL Listed, suitable for low voltage and active applications and for use in air handling spaces.

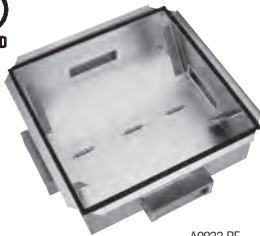
A variety of sizes are available to match floor height. Most models include brackets for attachment to access floor support pedestals. Enclosures include threaded equipment mounting rails and have multiple, edge-protected cable access ports with foam sealing kits. All enclosures are finished clear.

In enclosures designed for use in low height floors, two facing pairs of pivoting equipment mounting rails are used to provide easy access to the front and rear of the patch panel. In deeper enclosures, rails that are parallel to the floor provide higher consolidation point capacity. There is also a model with a lift out tray that can support active components. Order #12-24 equipment mounting screws (P/N 40605-001) separately.

Raised Floor Enclosures For Patch Panels

These enclosures use the access floor tile as a "lid." (All models, except A0222-RF, include access floor installation brackets.)

- A0222-RF features four cable access ports 6" x 3/4" (152 mm x 19 mm); 19" EIA threaded equipment mounting rails "pivoting"
- A0422-RF features four cable access ports 6" x 3/4" (152 mm x 19 mm); 19" EIA threaded equipment mounting rails "pivoting"
- A0622-RF features four cable access ports 6-3/4" x 2" (171 mm x 50 mm); 19" EIA threaded equipment mounting rails "pivoting"
- A0822-RF features four cable access ports 6-3/4" x 2" (171 mm x 50 mm); 19" EIA threaded equipment mounting rails "pivoting"
- 13772-001 features larger cable openings for Cat 6a cables; two ports 14-3/4" x 3-1/4" (374 mm x 82mm) and two ports 6-1/4" x 7" (158.8 mm x 180 mm); 19" EIA threaded equipment mounting rails "pivoting"
- A1422-RF features four cable access ports 9-3/4" x 2-3/4" (247 mm x 69 mm); 19" EIA threaded equipment mounting rails "fixed"
- 13772-002 features larger cable openings for Cat 6a cables; six ports 14-3/4" x 3-1/4" (374 mm x 82 mm); 19" EIA threaded equipment mounting rails "pivoting"



A0822-RF



A1422-RF

| Part Number | Description Depth in (mm) | Shipping Weight lb (kg) |
|-------------|--|-------------------------------|
| A0222-RF | 1U+1U Enclosure for 2 (50) Floor | 10 (4.5) |
| A0422-RF | 1U+1U Enclosure for 4 (100) Floor | 10 (4.5) |
| A0622-RF | 2U+2U Enclosure for 6 (150) Floor | 23 (10.4) |
| A0822-RF | 4U+4U Enclosure for 8 (200) Floor | 23 (10.4) |
| 13772-001 | 4U+4U Enclosure for 8 (200) Floor, Large Ports | 25 (11.3) |
| A1422-RF | 11U Enclosure for 14 (360) Floor | 30 (13.6) |
| 13772-002 | 4U+4U Enclosure for 14 (360) Floor, Large Ports | 30 (13.6) |



A0822-RF-F

Raised Floor Enclosure For Fiber

Prepare your data center for future changes by pre-wiring it with fiber connections located under an access floor.

- Fits under a single 2' x 2' access floor tile
- A0822-RF-F features two 7" x 2" (180 mm x 50 mm) cable access ports and 19" EIA threaded equipment mounting rails with 4U of rack-mount unit space
- A1422-RF-F features two 10" x 2-1/2" cable access ports and 19" EIA threaded equipment mounting rails with 6U of U space
- Equipment mounting rails can be centered or offset in the enclosure to accommodate angled patch panels or longer electronics
- Cable tie points simplify cable management
- Includes (4) access floor support brackets

| Part Number | Description Depth in (mm) | Shipping Weight lb (kg) |
|-------------|---------------------------------------|-------------------------------|
| A0822-RF-F | 4U Fiber Enclosure for 9 (230) Floor | 30 (13.6) |
| A1422-RF-F | 6U Fiber Enclosure for 14 (356) Floor | 30 (13.6) |



A1411-RF-HR

Raised Floor Enclosure For Active Components

Features a lift-out tray for 2U x 10-1/4" D (260.4 mm) of active components and 5U (divided 2U - 1U - 2U) for passive connectivity.

- Includes a junction box for a duplex power outlet
- Includes fan to remove heat generated by active components

| Part Number | Description Depth in (mm) | Shipping Weight lb (kg) |
|-------------|---------------------------------|-------------------------------|
| A1411-RF-HR | 7U Enclosure for 14 (360) Floor | 30 (13.6) |



A0802-RF-DI

Raised Floor Enclosure With Locking Cover For Patch Panels

"Drop-In" enclosure measures 21-1/4" x 22-1/4" (539.8 mm x 565.2 mm) and includes a locking cover for use completely below access floor tiles. Installation only requires the removal of one floor tile.

- Features pivoting mounting rails similar to models above and is perfect for existing data centers

| Part Number | Description Depth in (mm) | Shipping Weight lb (kg) |
|-------------|-----------------------------------|-------------------------------|
| A0802-RF-DI | 4U+4U Enclosure for 9 (230) Floor | 25 (11.3) |



Ceiling Enclosures

Ceiling Enclosures fit within a single 2' x 2' or 2' x 4' space, replacing a standard acoustical ceiling tile. The enclosure's face and interior are painted white and have recessed panels to support a ceiling tile, so that they blend with the drop ceiling. A fully hinged door panel with latch closures supports equipment. The door opens downward so that equipment is facing the service technician. Three door styles are available to support wiring blocks, patch panels or active components. Door locks are available as an accessory.

Ceiling Enclosures are UL Listed, suitable for low voltage and active applications and for use in air handling spaces.

- 2' x 2' enclosures support 70 lb (31.8 kg) of cables and equipment and 20 lb (9.1 kg) on the access door
- 2' x 4' enclosures support 80 lb (36.3 kg) of cables and equipment and 50 lb (22.7 kg) on the pneumatic assisted access door
- Enclosures fit in 12" H (300 mm) drop ceilings and attach to building structure with four or six 3/8" threaded rods (ordered separately)
- Includes two or four edge-protected cable access ports with fire-rated foam sealing kits



A1222-HR

Ceiling Enclosure For Hubs, Switches And Patch Panels

Telecommunication enclosure supports a combination of active components and patch panels or other panel-mount termination hardware. Enclosures include a junction box for power and a fan to remove heat generated by active components.

- A1222-HR provides 5U for patch panels and 2U x 15"D (380 mm) for active equipment; equipment mounts on the door
- 13812-001 provides larger cable openings for Cat 6a; one 3-1/4" x 14-3/4" (82.6 mm x 374.7 mm) and one 6-1/4" x 6-7/8" (158.8 mm x 174.6 mm)
- A1024-HR provides 5U for patch panels and 2U x 15"D (380 mm) for active equipment; equipment mounts on the door
- A1224-HR provides a total of 10U with (3) brackets sized 4U - 2U - 4U to support a combination of patch panels and 15"D (380 mm) or less active equipment; brackets may be mounted on the door or the back of the enclosure
- Order #12-24 equipment mounting screws separately

| Part Number | Description | Shipping Weight lb (kg) |
|-------------|--|-------------------------|
| A1222-HR | 2' x 2' Ceiling Enclosure | 39 (17.7) |
| 13812-001 | 2' x 2' Ceiling Enclosure, Large Ports | 40 (18.1) |
| A1024-HR | 2' x 4' Ceiling Enclosure | 47 (21.4) |
| A1224-HR | 2' x 4' Ceiling Enclosure | 45 (20.4) |



A1222-PP



13813-001

Ceiling Enclosure For Patch Panels

Secure a consolidation point using 19" patch panels or other panel-mount termination hardware.

- A1222-PP provides a total of 5U with (3) brackets sized 2U - 1U - 2U; brackets mount on the door
- 13812-002 provides larger cable openings for Cat 6a; one 3-1/4" x 14-3/4" (82.6 mm x 374.7 mm) and one 6-1/4" x 6-7/8" (158.8 mm x 174.6 mm)
- A1024-PP provides a total of 5U with (3) brackets sized 2U - 1U - 2U; brackets mount on the door
- A1224-PP provides a total of 10U with (3) brackets sized 4U - 2U - 4U; brackets may be mounted on the door or the back of the enclosure
- Order #12-24 equipment mounting screws separately

| Part Number | Description | Shipping Weight lb (kg) |
|-------------|--|-------------------------|
| A1222-PP | 2' x 2' Ceiling Enclosure | 38 (17.2) |
| 13812-002 | 2' x 2' Ceiling Enclosure, Large Ports | 39 (17.7) |
| A1024-PP | 2' x 4' Ceiling Enclosure | 43 (19.6) |
| A1224-PP | 2' x 4' Ceiling Enclosure | 45 (20.4) |
| 13813-001 | Ceiling Enclosure Fan Kit & Junction Box | 3 (1.4) |

Fan Kit & Junction Box, included with 13812-001, can be installed on either 13812-002 or 13812-003 to better support active components.



A1224-LP

Ceiling Enclosure For Wiring Blocks

Secure a consolidation point using wiring blocks. Enclosures include removable equipment mounting plates that can be match drilled to accommodate a wide variety of wiring blocks.

- A1222-LP has (1) mounting plate, size 13-3/4"W x 19-1/2"L (349 mm x 495 mm) for (2) 300-pair 110D (without legs) style blocks or (1) 300-pair 110A (with legs) style blocks
- 13812-003 provides larger cable openings for Cat 6a; one 3-1/4" x 14-3/4" (82.6 mm x 374.7 mm) and one 6-1/4" x 6-7/8" (158.8 mm x 174.6 mm)
- A1024-LP has (1) mounting plate, 16"W x 22"L (406 mm x 559 mm) for (2) 300-pair 110A (with legs) style blocks
- A1224-LP has (2) mounting plates, size 13-3/4"W x 19-1/2"L (349 mm x 495 mm) for (4) 300-pair 110D (without legs) style blocks or (2) 300-pair 110A (with legs) style blocks

| Part Number | Description | Shipping Weight lb (kg) |
|-------------|--|-------------------------|
| A1222-LP | 2' x 2' Ceiling Enclosure | 38 (17.2) |
| 13812-003 | 2' x 2' Ceiling Enclosure, Large Ports | 39 (17.7) |
| A1024-LP | 2' x 4' Ceiling Enclosure | 43 (19.6) |
| A1224-LP | 2' x 4' Ceiling Enclosure | 45 (20.4) |



LISTED



Basic Consolidation Enclosures

Basic Consolidation Enclosures (BCE) provide a low-cost, low-density consolidation point for telecommunication cabling. Both Ported (-P) and Non-Ported (-N) enclosures can be configured to be used either above the drop ceiling or below an access floor. All Ported versions (-P) come with a fire-rated foam sealing kit, making them suitable for air handling spaces. Basic Consolidation Enclosures are UL Listed (2043), plenum rated and come with a sealed door and a clear aluminum finish.



LISTED



BCE-6-P

BCE-6-P

BCE-6-P measures 14"W x 6"D x 20"L (360 mm x 150 mm x 510 mm) and includes installation brackets for attachment to building structure with 3/8" threaded rods. (Equipment mounting brackets not included.)

| Part Number | Description | Shipping Weight lb (kg) |
|-------------|------------------|-------------------------|
| BCE-6-P | 2-Port Enclosure | 7 (3.2) |



LISTED



BCE-24-P

BCE-24-P/N

BCE-24-P/N measures 14"W x 3"D x 20"L (360 mm x 80 mm x 510 mm). It includes rotating threaded interior mounting brackets for 1U of 19"W patch panel. Order #12-24 equipment mounting screws separately.

| Part Number | Description | Shipping Weight lb (kg) |
|-------------|-------------------------|-------------------------|
| BCE-24-P | 1U 2-Port Enclosure | 7 (3.2) |
| BCE-24-N | 1U Non-Ported Enclosure | 7 (3.2) |



LISTED



BCE-48-P

BCE-48-P/N

BCE-48-P/N measures 14"W x 6"D x 20"L (360 mm x 150 mm x 510 mm). It includes rotating threaded interior mounting brackets for 2U of 19"W patch panels. Order #12-24 equipment mounting screws separately.

| Part Number | Description | Shipping Weight lb (kg) |
|-------------|-------------------------|-------------------------|
| BCE-48-P | 2U 2-Port Enclosure | 12 (5.4) |
| BCE-48-N | 2U Non-Ported Enclosure | 12 (5.4) |

Zone Enclosure Service Parts

CPI provides a variety of replacement parts for zone cabling enclosures. Chrome Lock Kits and Spare Keys enhance security of the Ceiling Enclosure, replacing existing turn locks. Mounting Brackets ensure weight of Raised Floor Enclosure is fully supported.



Spare
Keys

Chrome
Lock Kit

Chrome Lock Kits/Spare Keys

Optional locks provide additional security for all standard ceiling enclosures. Includes two locks and two keys.

| Part Number | Description |
|-----------------|------------------|
| Chrome Lock Kit | Lock Kit, Pair |
| Spare Keys | Spare Keys, Pair |



RF-BRACKET

Raised Floor Mounting Brackets

Additional brackets used to support Raised Floor Enclosures from access floor support pedestals.

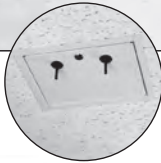
| Part Number | Description |
|-------------|---------------------------|
| RF-BRACKET | Mounting Brackets, 4 each |

Ceiling-Mounted Wireless Access Point Enclosures

Ceiling Enclosures create a permanent location for various wireless access points or bridges within drop ceilings. Equipment is supported on the access door. Most access doors are pre-punched with openings for antennas. Ceiling Enclosures include support brackets for use with 2' ceiling "grids." AAT-CAP features interchangeable door-mounted faceplates with mounting brackets for equipment. Universal Faceplate accepts access points up to 2" H x 10" W x 8" D (50 mm x 250 mm x 200 mm) with antennae(s) up to 10.5" (267 mm) apart. Enclosure is finished in white.



Wireless and Fiber Ready



AAT-CAP-00

AAT-CAP-UNI

AAT-CAP-11

AAT-CA P-12

AAT-CAP-1232

AAT-CAP-1242

AAT-CAP



AAT-CAP-1232-KIT

| Part Number | Description W x D x L | Shipping Weight lb (kg) |
|---|---|----------------------------|
| Wireless Ceiling Enclosures Without Faceplates | | |
| AAT-CAP | 12 x 10 x 14.5 (305 x 254 x 368) | 8 (3.6) |
| AAT-CAP-10-P | 12 x 13 x 14.5 (305 x 330 x 368) with junction box | 9 (4.1) |
| AAT-CAP-S | 12 x 5 x 14.5 (305 x 127 x 368) | 8 (3.6) |
| Faceplates For Wireless Enclosures | | |
| AAT-CAP-00 | Blank (Solid) Faceplate | 3 (1.4) |
| AAT-CAP-UNI | Universal Faceplate | 3 (1.4) |
| AAT-CAP-11 | For Cisco® Aironet® 1100 | 3 (1.4) |
| AAT-CAP-12 | For Cisco® Aironet® 1200 | 3 (1.4) |
| AAT-CAP-1232 | For Cisco® Aironet® 1232 | 3 (1.4) |
| AAT-CAP-1242 | For Cisco® Aironet® 1242 | 3 (1.4) |
| AAT-CAP Enclosures, 10" D (250 mm), With Faceplates | | |
| AAT-CAP-00-KIT | Blank (Solid) Faceplate | 10 (4.5) |
| AAT-CAP-UNI-KIT | Universal Faceplate | 10 (4.5) |
| AAT-CAP-11-KIT | Cisco® 1100 Faceplate | 10 (4.5) |
| AAT-CAP-12-KIT | Cisco® 1200 Faceplate | 10 (4.5) |
| AAT-CAP-1232-KIT | Cisco® 1232 Faceplate | 10 (4.5) |
| AAT-CAP-1242-KIT | Cisco® 1242 Faceplate | 10 (4.5) |
| AAT-CAP-S Enclosures, 5" D (130 mm), With Faceplates | | |
| AAT-CAP-S-00-KIT | Blank (Solid) Faceplate | 9 (4.1) |
| AAT-CAP-S-UNI-KIT | Universal Faceplate | 9 (4.1) |
| AAT-CAP-S-12-KIT | Cisco® 1200 Faceplate | 9 (4.1) |
| AAT-CAP-S-1232-KIT | Cisco® 1232 Faceplate | 9 (4.1) |
| AAT-CAP-S-1242-KIT | Cisco® 1242 Faceplate | 9 (4.1) |

Note: AAT-CAP-11 may only be used with AAT-CAP.



13833-001



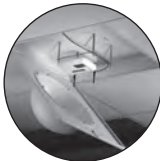
WA064-CAP

Ceiling-Mounted Wireless Enclosure

Ceiling Enclosures create a secure and permanent location for various wireless access points or bridges within drop ceilings. Equipment is supported on the access door. Enclosures are finished in Computer Beige.

| Part Number | Description H x W x D in (mm) | Shipping Weight lb (kg) |
|-------------|---|-------------------------------|
| 13833-001 | 15.5 x 5 x 16.5 (394 x 127 x 419) Optimized for Cisco® 1250 | 10 (4.5) |
| WA064-CAP | 10 x 4 x 12.75 (254 x 102 x 324) Optimized for Cisco® Aironet® 350 | 5 (2.3) |

Wireless and
Fiber Ready



Dome Wireless Enclosure

The AAT-ACE-DOME replaces a single drop ceiling tile to hide wireless access points in open office spaces. The dome is mounted on a fully hinged locking door, providing easy access to equipment and cables for authorized technicians only.

- (1) 3/4" H x 3" W (19.1 mm x 80 mm) edge-protected cable access port with approved foam sealing kit
- Includes two sets of standoffs to adjust height of back plate within dome
- Enclosure: 23-3/4" W x 3" D x 23-3/4" L (603.3 mm x 80 mm x 603.3 mm)
- Dome: 6-1/2" H (165 mm), 14" Diameter (360 mm)
- Dome is large enough to accommodate most access points, including Cisco's large 1250 series AP
- Product Weight: 10.5 lb (4.76 kg)
- Removable mounting plate is 8 7/8" W x 6-7/8" L (225.43 mm x 174.63 mm)
- Customer must provide (4) 3/8" threaded rods and installation hardware
- Enclosure and dome are finished in Computer Beige.

| Part Number | Description H x W x D in (mm) | Shipping Weight lb (kg) |
|--------------|--|-------------------------------|
| AAT-ACE-DOME | 23.75 x 3 x 23.75 (603 x 80 x 603) Domed Wireless Enclosure | 21 (9.5) |



Wireless and
Fiber Ready

Wireless Wall-Mount Enclosure

Wall-mounted access points provide better wireless coverage in some environments. This enclosure is for interior use and provides a secure and permanent wall-mounted location for various wireless access points and bridges.

- Optimized for Cisco® Aironet® 350
- Enclosure is finished in in Computer Beige
- UL Listed

| Part Number | Description H x W x D in (mm) | Shipping Weight lb (kg) |
|-------------|-------------------------------------|-------------------------------|
| WA064-WAP | 11 x 8 x 3 (200 x 280 x 80) | 9 (4.1) |



NEMA
Rated

NEMA-Rated Wireless Wall-Mount Enclosure

Wall-mounted wireless access point enclosure designed for warehouse, manufacturing, light industrial and exterior use. Single door is attached with a continuous steel hinge and secured by padlock through a stainless steel padlock hasp. A gasket seals the interior at closure.

- Enclosure is completely sealed; drill cable entry holes to fit application
- Enclosure: Fiberglass reinforced polyester, gray
- Enclosure: 11-1/2" H x 9-1/2" W x 4-1/2" D (292 mm x 241 mm x 114 mm)
- Product Weight: 5 lb (2.3 kg); Interior of the enclosure is 3" D (80 mm)
- Maximum equipment size is 9" x 7" x 3" (230 mm x 180 mm x 80 mm)
- Customer must provide installation and cable access hardware
- NEMA 1, 2, 3, 3R, 4, 4X, 12 and 13

| Part Number | Description H x W x D in (mm) | Shipping Weight lb (kg) |
|-------------|-------------------------------------|-------------------------------|
| AAT-MWME-P | 11.5 x 9.5 x 4.5 (292 x 241 x 114) | 6 (2.7) |



NEMA
Rated

Large NEMA-Rated Wireless Wall-Mount Enclosure

Designed for warehouse, manufacturing, light industrial and exterior use. Single front door is attached with a continuous steel hinge and secured by padlock through a stainless steel padlock hasp. A gasket seals the interior at closure.

- Enclosure is completely sealed; drill cable entry holes to fit application
- Removable mounting plate for wireless transmitters
- Enclosure: Fiberglass reinforced polyester, gray
- Product Weight: 7.5 lb (3.4 kg)
- The interior of the enclosure is 5" D (130 mm)
- Maximum equipment size: 13.5" x 11.5" x 5" (343 mm x 292 mm x 130 mm)
- Customer must provide installation and cable access hardware
- NEMA 1, 2, 3, 3R, 4, 4X, 12 and 13

| Part Number | Description H x W x D in (mm) | Shipping Weight lb (kg) |
|-------------|-------------------------------------|-------------------------------|
| AAT-WME-P | 15.5 x 13.5 x 6 (394 x 343 x 150) | 11 (5.0) |



Wireless and
Fiber Ready

NEMA
Rated

Large NEMA-Rated Wireless Wall-Mount Enclosure With Window

The AAT-WMESG-P is for warehouse, manufacturing, light industrial and exterior use. A single front door provides access to equipment. The door is attached with a continuous steel hinge and secured by padlock through a stainless steel padlock hasp. A gasket seals the interior at closure. Large window provides viewing of equipment.

- Enclosure is completely sealed; customer drills cable entry holes to fit application
- Removable mounting plate for wireless transmitters
- Enclosure: Fiberglass reinforced polyester, gray
- Product Weight: 7.5 lb (3.4 kg)
- The interior of the enclosure is 5"D (130 mm)
- Maximum equipment size: 13.5" x 11.5" x 5" (343 mm x 292 mm x 130 mm)
- NEMA 1, 2, 3, 3R, 4, 4X, 12 and 13

| Part Number | Description H x W x D in (mm) | Shipping Weight lb (kg) |
|-------------|--|----------------------------|
| AAT-WMESG-P | 15.5 x 13.5 x 6 (394 x 343 x 150) Large Enclosure with Window | 11 (5.0) |

Zone Cabling, Wall-Mount Enclosure

The Wall-Mount Enclosure measures 24"H x 42"W x 7.5"D (610 mm x 1070 mm x 191 mm). Includes mounting positions for passive and active equipment, a junction box and a fan to remove heat generated by active components.

Mounting positions include space for a single 100 pair 110-style termination block, a single 6-port fiber optic adapter panel, two 2U x 19" spaces for patch panels or other panel mount termination hardware and one 3U x 19" space for active components up to 18"D (460 mm).

The enclosure is pre-punched with knockouts for 1/2" or 1-1/2" electrical conduit for cables and has an insulated, locking, fully-hinged double door to reduce noise and provide security.

- Enclosure is finished in beige



| Part Number | Description H x W x D in (mm) | Shipping Weight lb (kg) |
|-------------|-------------------------------------|----------------------------|
| AAT-AWM-H | 24 x 42 x 7.5 (610 x 1070 x 191) | 76 (34.4) |