

Power IQ[®] for eConnect[®]

Data Center Energy, Power, Environmental, and Access Control Monitoring Software



Data Sheet

In today's data center, being efficient with power and cooling resources is just as important as maintaining uptime. Power IQ[®] (PIQ) for eConnect[®] software provides the information and controls you need to fully utilize your existing infrastructure resources, while alerting you to trouble before it causes downtime. With out-of-the-box compatibility with CPI eConnect rack-mount Power Distribution Units (PDUs), eConnect PIQ software can be easily deployed as a standalone monitoring solution or with Sunbird's dcTrack[®] DCIM Operations to provide full asset and change management.

PIQ functionality scales to meet enterprise needs, allowing you to securely keep tabs on all your data centers and labs by monitoring rack PDUs, CRACs, UPS, PDUs, RPPs, meters, branch circuits, racks, environment sensors and IT devices, all from a single web interface. PIQ is vendor neutral and automatically accepts CPI's eConnect PDUs and devices from other top manufacturers, allowing you to add support for many other products with our dynamic plug-in capability.

Centrally Manage and Control CPI eConnect Rack PDUs and Intelligent Assets

In modern enterprises with hundreds of intelligent assets, centralized management of all equipment can be a cumbersome task. PIQ software simplifies overall management by:

- Full support of CPI Secure Array[™] technology, which allows you to save significantly on PDU networking costs through IP consolidation.
- Synchronizing data between eConnect Rack PDUs and PIQ software.
- Maintaining centralized authentication, access, and auditing of all equipment and ensuring regulatory compliance with HIPAA, PCI DSS, FIMSA, EU Directive, etc.
- Providing centralized power control of all IT assets connected to Switched and Switched Pro PDUs.
- Providing centralized cabinet access control of all electronic locks connected to eConnect Monitored, Monitored Pro, Switched and Switched Pro PDUs.
- Providing centralized environmental monitoring of all temperature and humidity sensors connected to eConnect PDUs.
- Providing centralized grouping capabilities of outlets, PDUs, and other equipment.

Utilize Power and Cooling Resources Efficiently and Improve PUE

PIQ software automatically collects power and environmental data from CPI eConnect Rack PDUs, sensors and other intelligent equipment within the data center.

- Leverage Free Cooling – Patented Cooling Charts help you keep cabinets in the ASHRAE[®] allowable environmental ranges for potential cost savings.
- Identify and Eliminate Ghost Servers – Scheduled email reports pinpoint ghost servers for consolidation.
- Bill Back Based on Energy Usage – Automatically generated bill back reports drive better behavior.

Make Informed Power and Capacity Planning Decisions

PIQ software tracks actual power load of IT devices under computing stress, providing better planning information.

- Find Stranded Capacity – Newly found capacity delays expensive capital expenditure.
- Project Future Capacity Needs - Trending and days of supply projections enable accurate forecasting.
- Monitor UPS Capacity and Battery information – End-to-end monitoring easily prevents potential over-capacity situations.

Monitor Data Center Health to Prevent Costly Unplanned Downtime

Avoid unplanned downtime that can cost hundreds of thousands of dollars per outage and the health of your complete data center including critical facilities, e.g. UPS, CRACs, and panels.

- Simulate Failover – Reports identify available capacity to ensure coverage in case of failure, send threshold based alerting and identify hotspots and potential trouble areas.
- Visualize Data Center and Facility Health Status – Health Map with red, yellow and green color coding provides an at-a-glance view of rack load levels, line currents and all environmental conditions.
- Alerting and Alarming of Threshold Violations – Automated emails enable quick identification of hotspots and potential trouble areas.

Monitor Cabinet-Level Access Control to Ensure Regulatory Compliance

- Cabinet-Level Access Control – Auto-discover and configure doors and locks. Centralize access rights and permissions. Remotely lock or unlock your cabinet.
- Door Security Reports – Provide door status reports including door, handle and electronic lock status. Door audit reports include user, requested action and access summary.
- Event logging – Log time, action, and the door/lock resulting status. Email alert reports.

VMware[®] Virtual Appliance

Platform Options

- Our application software, database and hardened Linux[®] operating system are fully tested and ready to load on your VMware platform.
- Our application software, database and hardened Linux[®] operating system are loaded onto our enterprise-class, rack-mountable, 1U server with configured, dual power supply and included rail kit for installation purposes.



Powered by



DSC008 March 2017

www.chatsworth.com | 800-834-4969 | techsupport@chatsworth.com

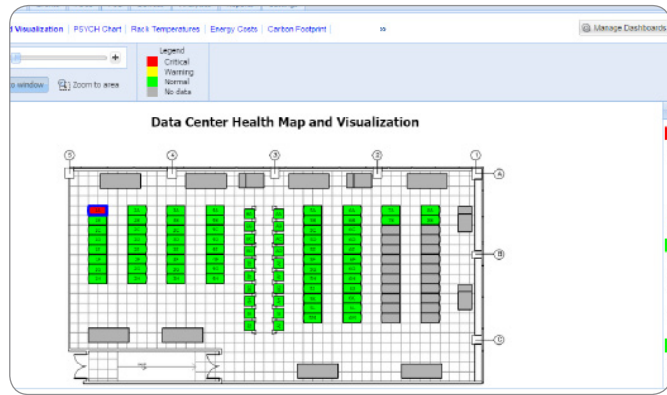


Power IQ[®] for eConnect[®]

Data Center Energy, Power, Environmental, and Access Control Monitoring Software

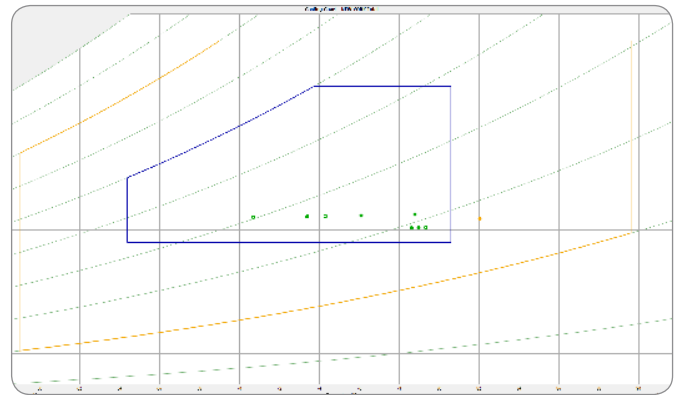
Health Monitoring

A real-time, interactive data center health map warns of issues such as hot spot formation, SLA violations, over charges and loss of redundancy.



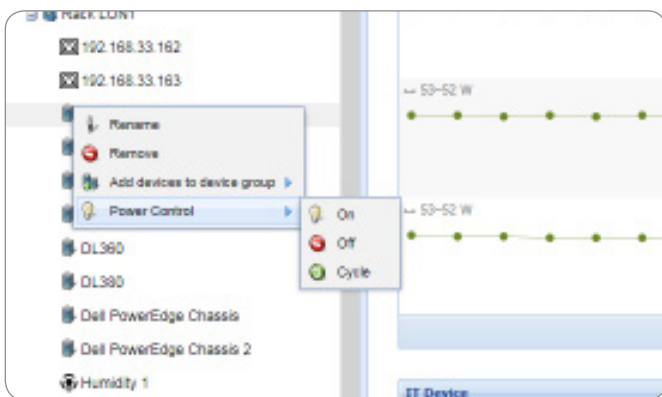
Avoid Hotspots

Ensure uptime, compliance with manufacturer and industry-accepted recommendations, and achieve project costs savings increasing the temperature set point.



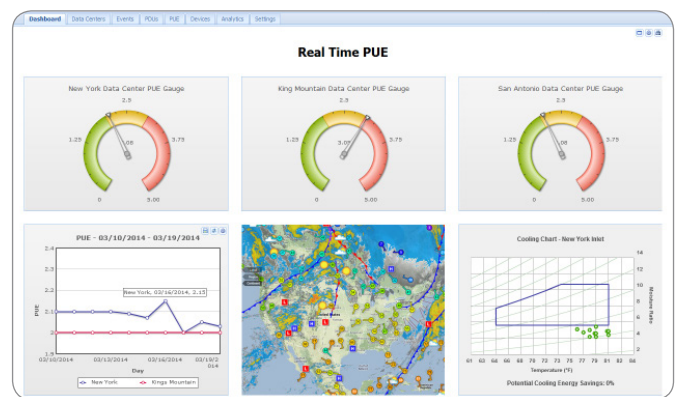
Power Control

Easily control power on outlets, IT devices, and groups of IT devices with power sources spanning multiple rack PDUs.



Power Usage Efficiency

See real-time PUE and trends and your current power capacity utilization at any level in your data center or lab (PDU, rack, row, busway, room, etc.).



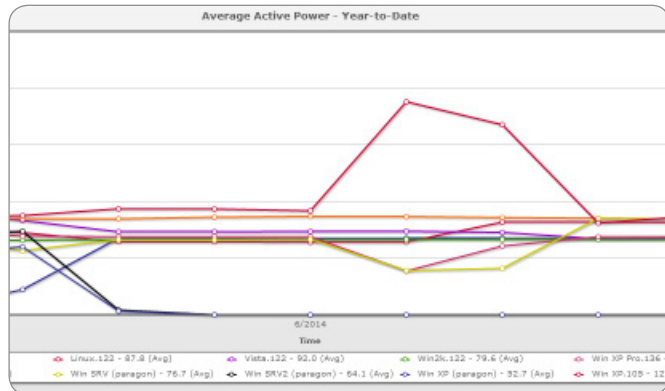
Power IQ® for eConnect®

Data Center Energy, Power, Environmental, and Access Control Monitoring Software



Find Stranded Capacity

Power consumption reports provide a quick and easy way to identify what cabinets have available capacity, thereby delaying expensive capital expenditure and improving resource efficiency.



Stimulate Power Failure

Eliminate outage concerns with at a glance views and reports that identify available capacity and whether there is enough available in case of failure.

Rack 1A

Rack Summary

Capacity (kW)	Load (kW)	Utilization
10.00	1.67	16.7%

Pair 1

	Capacity (A)	192.166-43.106 - 106 Rack1A-PW-0501U Load (A)	Utilization	192.166-43.106 - 2 Rack1A-PW-0501U Load (A)	Utilization	Fallover Simulation Load (A)	Utilization
Inlet							
L1	24	1.30	5.4%	0.90	3.7%	2.20	9.2%
L2	24	0.90	3.7%	1.90	7.9%	2.70	11.2%
L3	24	1.60	6.7%	1.40	5.8%	3.00	12.5%
Circuit Breakers							
CB1	20	0.70	3.5%	0.00	—	0.70	3.5%
CB2	20	0.50	2.5%	0.80	4.0%	1.30	6.5%
CB3	20	0.70	3.5%	0.80	4.0%	1.50	7.5%
CB4	20	0.20	1.0%	0.80	4.0%	1.00	5.0%

Bill Back Energy Usage

Automatically generate bill back reports that charge individual organizations based on usage, including premium charges for overages, provide equitable distribution of power and energy charges, and drive energy efficiency and sustainability initiatives.

Customer Bill with Rack Details

Customer: CH2400
Date Range: 20150501 - 20150531

Rack	kWh
Rack L0N1	679.641
1B	822.390
1A	334.499
1D	179.690
1F	8.001

Cabinet Access Management

Increase productivity with reports that clearly identify door status and allow for the remote control of door access.

Door Status Report - Raleigh

Date: 20150523
Time: 08:56:04
Location: Rack 1A

Space	Door	Status				
Type	Name	Area	Placement	Door	Handle	Electronic Lock
Rack	Rack 1A	A1 - Cold Aisle	Front	Closed	Closed	Unlocked
Rack	Rack 1A	A1 - Hot Aisle	Back	Closed	Closed	Locked



Power IQ[®] for eConnect[®]

Data Center Energy, Power, Environmental, and Access Control Monitoring Software

Monitoring and Management

- Monitor facility objects including sensors, meters, PDU/RPP/ Branch Circuits, UPS and CRAC devices.
- A central management console consolidates names, polling status, location, model and firmware onto one screen, saving valuable management time.
- Power and environmental events and notifications.
- Auto discover rack PDUs.
- Trap Filtering and Forwarding.
- Multi-Tenancy Support.
- Full support for Secure Array[™].

Dynamic Dashboard, Reporting and Charts

- Modern HTML User Interface.
- User configurable dashboard with drag-and-drop widgets.
- Tags and Tag Groups settings.
- Health and Capacity Floor Map.
- Energy, cost, and carbon consumption reports.
- Rack Inlet Cooling Chart.
- Power chargeback reports.
- Cabinet Capacity Report.
- Door Status and Audit Report.
- Stranded capacity exception report.
- Capacity, trending and status reports.
- Thermal analysis, including temperature and humidity.
- Compliance reports.
- Power Capacity meter with forecasted “days of energy supply.”
- Failover simulation charts.
- Critical and warning alerts report, display, and email notifications.
- Tabular customized reports for active power, energy, and temperature.

Automated Power Control

- Remote power control of outlets, IT devices, device groups and racks.
- Agentless graceful operating system shutdown.



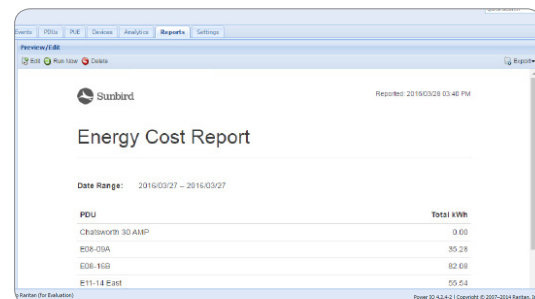
Power and Environmental Data Aggregation

- User-configurable collection intervals ensure desired accuracy while minimizing network traffic.
- Aggregate active power, current, temperature and humidity data.

Open Data Model

- Web Services API – for easy scripting and integration with your systems with support for Create, Read, Update and Delete Data Center Items. Power control and reading events.
- Open database connectivity capabilities let you use your existing data warehouse and reporting system to generate custom reports.
- Import and export data via CSV file.

Create Custom Reports



Security

- SNMP v1, 2, 3 with Informs.
- LDAP, Active Directory.
- IP Based Access Control.
- Granular permissions.
- Full audit log.
- IP Tables firewall.
- Support for all browsers.

Power IQ[®] for eConnect[®]

Data Center Energy, Power, Environmental, and Access Control Monitoring Software



Data Sheet

Power IQ for eConnect Software and License, With 1 Year Maintenance Plan		Power IQ for eConnect – Additional 1 Year Maintenance License	
Part Number	Description	Part Number	Description
36603-001	Software and License for Up to 10 Devices	36606-001	1 Year Maintenance License for up to 10 Devices
36603-002	Software and License for Up to 20 Devices	36606-002	1 Year Maintenance License for up to 20 Devices
36603-005	Software and License for Up to 50 Devices	36606-005	1 Year Maintenance License for up to 50 Devices
36603-010	Software and License for Up to 100 Devices	36606-010	1 Year Maintenance License for up to 100 Devices
36603-020	Software and License for Up to 200 Devices	36606-020	1 Year Maintenance License for up to 200 Devices
36603-030	Software and License for Up to 300 Devices	36606-030	1 Year Maintenance License for up to 300 Devices
36603-040	Software and License for Up to 400 Devices	36606-040	1 Year Maintenance License for up to 400 Devices
36603-050	Software and License for Up to 500 Devices	36606-050	1 Year Maintenance License for up to 500 Devices
36603-100	Software and License for Up to 1000 Devices	36606-100	1 Year Maintenance License for up to 1000 Devices
36603-150	Software and License for Up to 1500 Devices	36606-150	1 Year Maintenance License for up to 1500 Devices
36603-200	Software and License for Up to 2000 Devices	36606-200	1 Year Maintenance License for up to 2000 Devices
36603-250	Software and License for Up to 2500 Devices	36606-250	1 Year Maintenance License for up to 2500 Devices
36603-300	Software and License for Up to 3000 Devices	36606-300	1 Year Maintenance License for up to 3000 Devices
36603-400	Software and License for Up to 4000 Devices	36606-400	1 Year Maintenance License for up to 4000 Devices
36603-500	Software and License for Up to 5000 Devices	36606-500	1 Year Maintenance License for up to 5000 Devices



DSC008 March 2017

www.chatsworth.com | 800-834-4969 | techsupport@chatsworth.com



Power IQ[®] for eConnect[®]

Data Center Energy, Power, Environmental, and Access Control Monitoring Software

Power IQ for eConnect - Additional Device Licenses		Power IQ for eConnect - Support Services		
Part Number	Description	Part Number	Description	
36604-001	Additional License for Up to 10 Devices	36605-001	1-Hour of Professional Service (Travel & Lodging not included)	
36604-002	Additional License for Up to 20 Devices	36605-002	1-Day Quick-Start Service (Travel & Lodging included)	
36604-005	Additional License for Up to 50 Devices	36605-003	Dynamic Plug-In, Developed, Certified and Tested by Professional Services	
36604-010	Additional License for Up to 100 Devices	Power IQ for eConnect Server Hardware		
36604-020	Additional License for Up to 200 Devices	Part Number	Description	Shipping Weight
36604-030	Additional License for Up to 300 Devices	36516-002	Power IQ for eConnect software, Pre-installed on 1U Configured Dual Power Supply Server, 1 Year Support and Maintenance, Includes Rail Kit	39 lb (18 kg)
36604-040	Additional License for Up to 400 Devices			
36604-050	Additional License for Up to 500 Devices			

For Support, call 800.834.4969 or visit www.chatsworth.com/power-iq-econnect

About CPI

At Chatsworth Products (CPI), it is our mission to address today's critical IT infrastructure needs with products and services that protect your ever-growing investment in information and communication technology. We act as your business partner and are uniquely prepared to respond to your specific requirements with global availability and rapid product customization that will give you a competitive advantage. At CPI, our passion works for you. With over two decades of engineering innovative IT physical layer solutions for Fortune 500 and multinational corporations, CPI can respond to your business requirements with unequalled application expertise, customer service and technical support, as well as a global network of industry-leading distributors. Headquartered in the United States, CPI operates from multiple sites worldwide, including offices in Mexico, Canada, China, the United Arab Emirates and the United Kingdom. CPI's manufacturing facilities are located in the United States, Asia and Europe.

About Sunbird

Sunbird Software is changing the way data centers are being managed. With a focus on real user scenarios for real customer problems, we help data center operators manage tasks and processes faster and more efficiently than ever before, while saving costs and improving availability. We strive to eliminate the complexity they have been forced to accept from point tools and home grown applications, removing the dependency on emails and spreadsheets to transform the delivery of data center services. Sunbird delivers on this commitment with unexpected simplicity through products that are easy to find, buy, deploy, use, and maintain. Our solutions are rooted in our deep connections with our customers who share best practices and participate in our user groups and product development process.

Based in Somerset, NJ, Sunbird serves nearly 1,000 DCIM customers worldwide. For more information, please visit SunbirdDCIM.com

© 2017 Sunbird Software. All rights reserved. dcTrack and Power IQ are registered trademarks of Sunbird Software



DSC008 March 2017

www.chatsworth.com | 800-834-4969 | techsupport@chatsworth.com