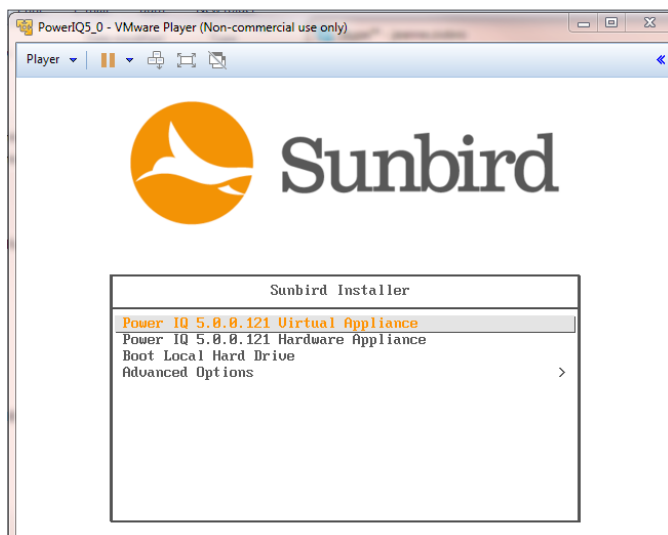
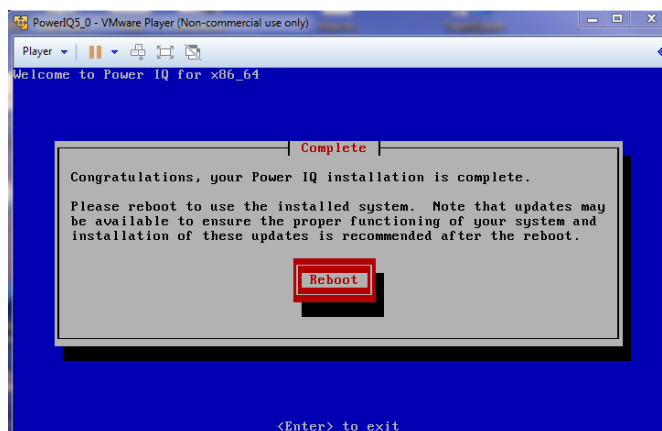


9. At the next screen choose the Virtual Machine. Ctrl-Alt will let you return to your computer and Ctrl-G will let you direct input to the virtual Machine.



10. Congratulations you have successfully installed Power IQ. Reboot to continue with the Power IQ setup.



Do you have additional questions?
Visit the Power IQ support section to access:

- a. Quick Setup Guide Software Installation
- b. Software Release Notes
- c. Power IQ user guide (online help)
- d. Contact us

[Solution home](#) / [Software Updates and Docs](#)

Power IQ 5.1.1



Release Notes and Software Download

Mon, Mar 28, 2016 at 2:54 PM



Documentation

Mon, Mar 28, 2016 at 2:54 PM



Tools

Mon, Mar 28, 2016 at 2:55 PM

