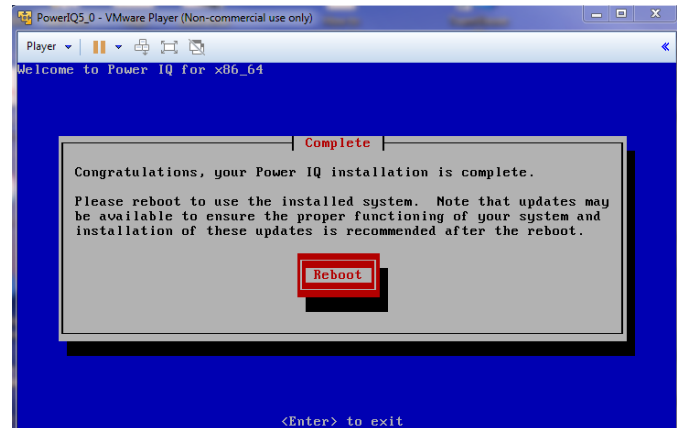
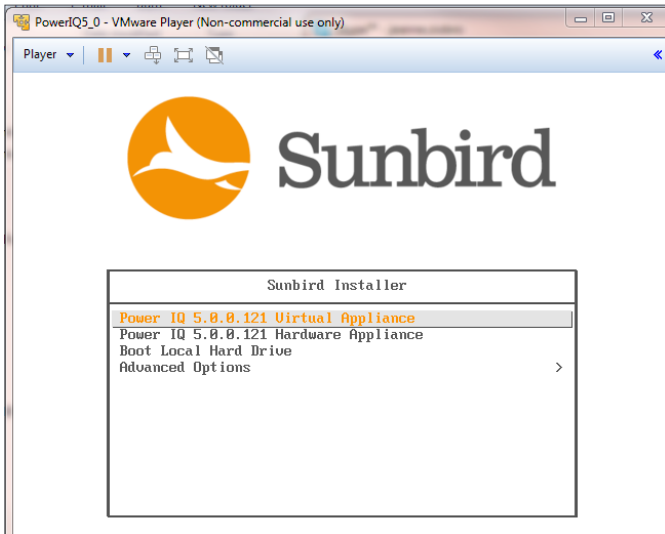




9. At the next screen choose the Virtual Machine. Ctrl-Alt will let you return to your computer and Ctrl-G will let you direct input to the virtual Machine.

10. Congratulations you have successfully installed Power IQ. Reboot to continue with the Power IQ setup.



**Do you have additional questions?
Visit the Power IQ support section to access:**

- a. Quick Setup Guide Software Installation
- b. Software Release Notes
- c. Power IQ user guide (online help)
- d. Contact us

[Solution home](#) / [Software Updates and Docs](#)

Power IQ 5.1.1



[Release Notes and Software Download](#)

Mon, Mar 28, 2016 at 2:54 PM



[Documentation](#)

Mon, Mar 28, 2016 at 2:54 PM



[Tools](#)

Mon, Mar 28, 2016 at 2:55 PM

