

RMR® Modular Enclosure

RMR® Modular Enclosure is an advanced industrial enclosure engineered to protect equipment with cutting-edge sealing technology, certified ingress protection ratings, and multiple equipment mounting options to support IT equipment, automation electronics and electrical controls and instrumentation in nonhazardous indoor locations.



ADVANTAGES

- ➔ Provides equipment with NEMA Type 12 and IP 55 rated protection against ingress of solid foreign objects and dripping noncorrosive liquids, using advanced formed-in-place foam gasket technology at each panel and cable entry point
- ➔ Supports airflow and cooling options specially certified for industrial applications to maintain equipment cooling requirements outside of normal IT settings and equipment rooms
- ➔ Features unique drop-in frame attachment hardware, allowing quick and secure mounting of plates, rails and accessories at any point along the frame
- ➔ Allows a complete enclosure solution to be configured under a single part number, including the exact size frame, mounting system, doors, panel work and ventilation that you require
- ➔ Offers short lead times for modified enclosures—change size or color, and add openings for connections, controls and HMI

KEY FEATURES

- Sealed with formed-in-place foam gasket technology to meet NEMA Type 12 and IP 55 protection ratings
- High-strength, roll-formed steel frame with drop-in hardware for quick, secure and bonded accessory installation
- Removable, bolt-on top, side, bottom and rear panels
- Top panel can be configured with a removeable gland plate that can be field modified
- Bottom panel includes three solid gland plates that can be field modified
- Optional 19"EIA Mounting Rail Kit features square-punched holes and numbered rack-mount unit (U) spaces (24U, 42U, 45U and 47U)

SPECIFICATIONS

| | |
|----------------------------|---|
| Industry Standards | Industrial Control Panel Enclosures, NEMA Type 12, IP 55 Enclosure is rated for indoor use and protects equipment against the ingress of dust, lint and other debris, as well as dripping and splashing from noncorrosive liquids. |
| Overall Dimensions | Heights: - 24U, 47.2" (1200 mm) - 42U, 78.7" (2000 mm) - 45U, 82.7" (2100 mm) - 47U, 86.6" (2200 mm) |
| | Widths: 23.6" (600 mm) and 31.5" (800 mm) |
| | Depths: 23.6" (600 mm), 31.5" (800 mm), 39.4" (1000 mm) and 47.2" (1200 mm) |
| Equipment Space | 19" EIA (482.6 mm) Equipment Mounting Rails (2 pairs) or (1) Full-Height Rear Mounting Plate |
| Materials and Construction | Frame: - Welded, roll-formed steel frame; modular construction - Punched with attachment pattern, 0.98" (25 mm) increments - Drop-in attachment hardware provides quick, secure, bonded accessory attachment |
| | Panels: - Steel panels and doors - Panels and doors attach to frame with hardware Sealing: - Formed-in-place foam gaskets; metric hardware |
| Frame | Frame is punched with attachment pattern in 0.98" (25 mm) increments Drop-in hardware or self-tapping screws attach accessories Options: - (2) Pair of square-punched 19"EIA (482.6 mm) equipment mounting rails - (2) Pair of square-punched 19"EIA (482.6 mm) equipment mounting rails with (6) horizontal supports - (1) Full-height equipment mounting plate Includes (4) lifting eye-bolts |

Availability: US, Canada, Latin America, Europe and Middle East

US & Canada

+1-800-834-4969
Toronto, Ontario, Canada
+905-850-7770
chatsworth.com
techsupport@chatsworth.com

Latin America

+52-55-5203-7525
Toll Free within Mexico
01-800-01-7592
chatsworth.com.co

Europe

+44-1628-524-834
chatsworthproducts.co.uk

Middle East & Africa

Dubai, UAE
+971-4-2602125
chatsworth.ae

Asia Pacific

+86 21 6880-0266
chatsworth.com.cn

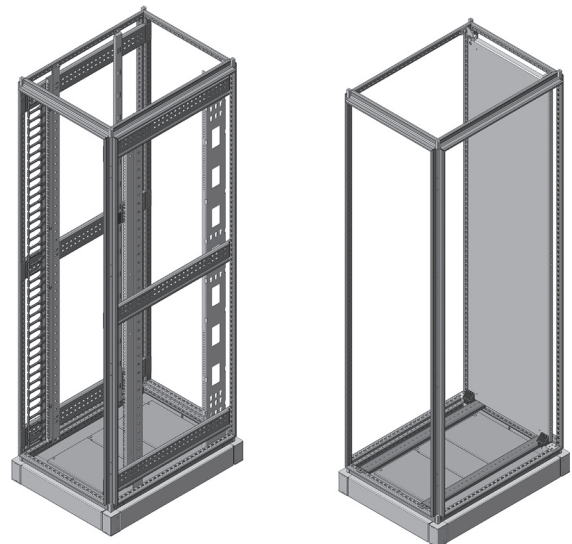


CHATSWORTH
PRODUCTS

SPECIFICATIONS

| | |
|--|--|
| Enclosure Includes | (1) Modular enclosure frame |
| | (4) Equipment mounting rails or (1) equipment mounting plate |
| | (1) Top Panel |
| | (2) Side Panels |
| | (1) Front Door |
| Frame | (1) Rear Door or Fixed Rear Panel |
| | (1) Bottom Panel |
| | Optional Filter Fan or Cooling Unit |
| | - Welded, high-strength roll-formed steel construction |
| | - Punched on all internal surfaces with a 0.98" (25 mm) increment attachment pattern |
| Top Panel | - Uses drop-in hardware for quick, secure and bonded accessory installation |
| | - Includes (4) lifting eye-bolts |
| Bottom Panel | Removable, bolt-on panels |
| | Optional Filter Fan (see ventilation) |
| Side Panels | Optional gland plates |
| | Removable, bolt-on solid panel or gland panel |
| Front Door | Removable, bolt-on panels |
| | Optional filter fan or cooling unit (see ventilation) |
| Rear Door | Baying options when side panels are removed |
| | Removable, reversible, hinged door |
| Rear Panel | Options: |
| | - Solid metal door |
| Certifications/ Compliance | - Viewing door |
| | - Optional filter fan or cooling unit (see ventilation) |
| Finishes | - Choice of Double bit or T-handle latch/lock |
| | - Optional document holder |
| NEMA Type 12 and IEC 60529, IP 55 | Removable, reversible, hinged door |
| | Hinged on the right side (swings open to right) |
| All Enclosures are: | Choice of double bit or T-handle latch/lock |
| | Options: |
| Enclosures without filter fans or air conditioners are: | - Solid metal door |
| | - Viewing door |
| RoHS, REACH | - Optional filter fan or cooling unit (see ventilation) |
| | - Choice of Double bit or T-handle latch/lock |
| EIA-310-E (when cabinet includes 19" EIA [482.6 mm] wide rails) | - No door (solid back panel) |
| | - Optional document holder |
| Enclosure panels are welded, ground smooth and finished with powder coat paint | Alternative to rear door |
| | Removable, bolt-on solid panel |
| Color options: Black or Hammer Gray (RAL 7035) | |
| | Additional finish options available upon request |

| | |
|-----------------------------|---|
| Description | Modular enclosure with hinged door(s) specifically rated for NEMA Type 12 and IP 55 protection of IT, automation and control equipment |
| Equipment Support | All equipment support options are electrically bonded to the frame and painted to match enclosure Full-Height Mounting Plate: - Mounts to enclosure frame from side-to-side (across the width) - Adjustable in depth or inset at back of frame - Supports panel-mount equipment - Optional Full-Height Baying Mounting Plate - Optional Half-Height Mounting Plate - Optional Quarter-Height Mounting Plate 19" EIA (482.6 mm) Equipment Rails: - 12-24 tapped or square-punched mounting rails, 2 pairs - Adjustable depth; attaches to frame or optional horizontal support slides - Feature 1.75" (44.45 mm) U spacing (vertical), EIA-310-E Universal Hole Spacing - Electrically bonded to frame |
| Ventilation Options | Inlet/Exhaust Filters for side panels and doors Filter Fans (for top panel, side panels and doors) Cooling Units (for side panels and front door) |
| Grounding/Bonding Solutions | Doors, side panels and top and bottom panels are bonded to frame and feature grounding studs on all major panels Frame bolts provide a two-point connection for service grounding Optional vertical grounding busbars available |
| Cable Entry | Optional top panel with removable gland plate Optional bottom panel with removable gland plates (3) Optional modified enclosure with custom openings Cable tie slots included on the 19" EIA (482.6 mm) Equipment Rails |
| Cable Management | - Optional Finger Cable Manager - Optional Ring Cable Manager - Optional Lashing Bracket - Optional Full-Height Dual PDU Bracket - Optional Half-Height Dual PDU Bracket Kitting and optional preinstallation with accessory purchase |
| Installation | Includes Leveler Kit Includes Shipping/Floor Attachment Brackets Optional Plinth Base: - 3.9" (100 mm) - 7.9" (200 mm) Optional Baying Accessory Kit |



PRODUCT INFORMATION**NEMA Type 12 and IP 55 Ratings for Nonhazardous Indoor Locations**

Chatsworth Products (CPI) RMR Modular Enclosure provides exceptional material ingress protection for network, communication, automation and control equipment in nonhazardous indoor locations. The RMR Modular Enclosure features a roll-formed, welded steel frame and mild steel panels with robotically applied formed-in-place foam gaskets. These features effectively maintain the enclosure's NEMA Type 12 and IP 55 ratings, which verify that equipment within the enclosure is protected from the intrusion of solid foreign objects such as dirt, dust, lint and fibers, as well as mild, noncorrosive liquid ingress from light dripping and splashing. In addition, the robust design of the RMR Modular Enclosure serves to protect personnel from hazardous moving parts and electrical equipment within the enclosure.

Versatile Equipment Support

The RMR Modular Enclosure features a welded, roll-formed frame that is punched with attachment points on all interior surfaces to support an array of panel and equipment installations. The frame may be outfitted with a variety of mounting plates or 19" EIA (482.6 mm) wide equipment rails. Mounting plates are available in quarter-, half- and full-height options. Full-height plates attach side-to-side, and face the front of the enclosure. Quarter- and half-height plates may be installed on the equipment frame from front-to-back or side-to-side of the enclosure. Several quarter- and half-height plates may be installed into a single RMR Modular Enclosure at the same time. The versatile design feature allows for the enclosure to be configured for panel mounted equipment, 19" EIA (482.6 mm) wide rail equipment or a combination of both to support network, or automation and control equipment within the enclosure. Additional options are available upon request.

Quality Airflow with Superior Environmental Protection

The standard RMR Modular Enclosure is available with filtered fan kits or closed-loop cooling units to improve equipment ventilation while maintaining the enclosure's NEMA Type 12 and IP 55 protection ratings. Filtered fan kits mount to the enclosure's side panels, doors and top panel and are available in a range of airflow specifications and operating voltages. A variety of cooling unit options are also available to maintain a specific internal temperature for equipment. Cooling units mount to the enclosure's side panels or front door and are available in a range of capacities.

Doors with Enhanced Security and Convenient Access

Optional viewing windows on the RMR Modular Enclosure provide visibility without the risk of exposing sensitive equipment through an open door. Choose double bit latches or T handle latches with keyed locks to secure the doors. A convenient, optional document holder provides storage and quick access to device literature, also lowering the amount of time devices are exposed to the environment during routine maintenance. In lieu of a rear door, a gasket-sealed panel configuration is also available, so the enclosure may be placed against walls and other structures.

Trusted Cable Management and Accessory Options

The RMR Modular Enclosure provides material ingress protection while enabling data center industry best practices for cable support and management. The enclosure's top panel is available solid or with a removable gland plate. The enclosure's bottom panel includes a three-piece removable gland plate. These gland plates can be removed, modified to accept a sealed cable entry grommet or conduit fittings and replaced without interfering with the enclosure's protection ratings.

Route cables vertically within the enclosure using CPI cable management accessories such as lashing brackets, Ring Cable Managers and Finger Cable Managers. These accessories ensure a flexible solution for a variety of networking, communication, automation and control needs.

Modified Enclosures

CPI offers modified enclosures with short lead times. Additional sizes and colors are available. Specify a variety of openings for cable entry, controls and HMI. Select, kit or have CPI preinstall accessories, all in a manner that maintains NEMA Type 12 and IP 55 protection ratings. Contact CPI Technical Support to request a modified enclosure.

Interested in learning more about our RMR Industrial Enclosures? Call us at 800-834-4969, or email Technical Support at techsupport@chatsworth.com

ORDERING INFORMATION - RMR MODULAR ENCLOSURE MATRIX:

| A | 1 | - | H | W | D | FR | - | FD | RD | SP | L | - | C | BP | TP |
|--|------|------|---|---|---|----|---|----|----|----|---|---|---|----|----|
| 1. Type | | | | | | | | | | | | | | | |
| Modular | | 1 | | | | | | | | | | | | | |
| 2. Height | | | | | | | | | | | | | | | |
| U | in | mm | | | | | | | | | | | | | |
| 24 | 47.2 | 1200 | 1 | | | | | | | | | | | | |
| 42 | 78.7 | 2000 | 2 | | | | | | | | | | | | |
| 45 | 82.7 | 2100 | 3 | | | | | | | | | | | | |
| 47 | 86.6 | 2200 | 4 | | | | | | | | | | | | |
| 3. Width | | | | | | | | | | | | | | | |
| in | mm | | | | | | | | | | | | | | |
| 23.6 | 600 | 1 | | | | | | | | | | | | | |
| 31.5 | 800 | 2 | | | | | | | | | | | | | |
| 4. Depth | | | | | | | | | | | | | | | |
| in | mm | | | | | | | | | | | | | | |
| 23.6 | 600 | A | | | | | | | | | | | | | |
| 31.5 | 800 | B | | | | | | | | | | | | | |
| 39.4 | 1000 | C | | | | | | | | | | | | | |
| 47.2 | 1200 | D | | | | | | | | | | | | | |
| 5. Frame Style | | | | | | | | | | | | | | | |
| Multi-Mount (Square-Punched) Rails, 2 Pair, 19" EIA (482.6 mm) | | A | | | | | | | | | | | | | |
| Multi-Mount (Square-Punched) Rails, 2 Pair, 19" EIA (482.6 mm) with Front-To-Rear Horizontal Support Slides | | B | | | | | | | | | | | | | |
| Full-Height Mounting Plate Assembly with Lower Support Rails | | C | | | | | | | | | | | | | |
| 6. Front Door (Hinges on Right Side) | | | | | | | | | | | | | | | |
| Single Solid Metal Door | | 1 | | | | | | | | | | | | | |
| Single Metal Door with Window | | 2 | | | | | | | | | | | | | |
| Intake Door Assembly with Filter Fan, 7" (177 mm), 65 CFM (110 CMH), 115 VAC | | 3 | | | | | | | | | | | | | |
| Intake Door Assembly with Filter, 7" (177 mm) | | 4 | | | | | | | | | | | | | |
| Intake Door Assembly with Filter Fan, 11.5" (291 mm), 560 CFM (351 CMH), 115 VAC | | 5 | | | | | | | | | | | | | |
| Intake Door Assembly with Filter, 11.5" (291 mm) | | 6 | | | | | | | | | | | | | |
| Intake Door Assembly with Filter Fan, 7" (177 mm), 65 CFM (110 CMH), 230 VAC | | 7 | | | | | | | | | | | | | |
| Intake Door Assembly with Filter Fan, 11.5" (291 mm), 560 CFM (951 CMH), 230 VAC | | 8 | | | | | | | | | | | | | |
| AC Door Assembly with Cooling Unit, 3000-4000 Btu/hr (879-1172 W), 115 VAC | | 9 | | | | | | | | | | | | | |
| 7. Rear Door (Hinges on Right Side) | | | | | | | | | | | | | | | |
| Single-Sided Metal Door | | 1 | | | | | | | | | | | | | |
| Fixed Rear Metal Panel (no hinges, no latch) | | 2 | | | | | | | | | | | | | |
| Exhaust Door Assembly with Filter Fan, 7" (177 mm), 65 CFM (110 CMH), 115 VAC | | 3 | | | | | | | | | | | | | |
| Exhaust Door Assembly with Filter Fan, 11.5" (291 mm), 560 CFM (951 CMH), 115 VAC | | 4 | | | | | | | | | | | | | |
| Exhaust Door Assembly with Filter Fan, 7" (177 mm), 65 CFM (110 CMH), 230 VAC | | 5 | | | | | | | | | | | | | |
| Exhaust Door Assembly with Filter Fan, 11.5" (291 mm), 560 CFM (951 CMH), 230 VAC | | 6 | | | | | | | | | | | | | |
| Exhaust Door Assembly with Filter, 7" (177 mm) | | 7 | | | | | | | | | | | | | |
| Exhaust Door Assembly with Filter, 11.5" (291 mm) | | 8 | | | | | | | | | | | | | |
| 8. Side Panels (Right/Left) | | | | | | | | | | | | | | | |
| None | | 0 | | | | | | | | | | | | | |
| Single Solid Side Panel Assembly, (Qty. 1) | | 1 | | | | | | | | | | | | | |
| Single Metal Side Panel Assembly, (Qty. 2) | | 2 | | | | | | | | | | | | | |
| Intake Side Panel Assembly with Filter Fan, 7" (177 mm), 65 CFM (110 CMH), 115 VAC; Right. Exhaust Side Panel Assembly with Filter, 7" (177 mm); Left | | 3 | | | | | | | | | | | | | |
| Intake Side Panel Assembly with Filter Fan, 11.5" (291 mm), 560 CFM (951 CMH), 115 VAC; Right. Exhaust Side Panel Assembly with Filter, 11.5" (291 mm); Left | | 4 | | | | | | | | | | | | | |
| Intake Side Panel Assembly with Filter Fan, 7" (177 mm), 65 CFM (110 CMH), 230 VAC; Right. Exhaust Side Panel Assembly with Filter, 7" (177 mm); Left | | 5 | | | | | | | | | | | | | |
| Intake Side Panel Assembly with Filter Fan, 11.5" (291 mm), 560 CFM (951 CMH), 230 VAC; Right. Exhaust Side Panel Assembly with Filter, 11.5" (291 mm); Left | | 6 | | | | | | | | | | | | | |
| AC Side Panel Assembly with Cooling Unit, 5000-7000 Btu/hr (1465-2051 W), 115 VAC; Right. Single Metal Side Panel Assembly; Left | | 7 | | | | | | | | | | | | | |
| Intake Side Panel Assembly with Filter, 11.5" (291 mm); Right. Intake Side Panel Assembly with Filter, 11.5" (291 mm); Left, Use with Top Panel Fan | | 8 | | | | | | | | | | | | | |
| 9. Latch | | | | | | | | | | | | | | | |
| Double Bit Latch Assembly | | 1 | | | | | | | | | | | | | |
| T Handle Latch Assembly with CH751 Keyed Lock | | 2 | | | | | | | | | | | | | |
| 10. Color | | | | | | | | | | | | | | | |
| Black | | C | | | | | | | | | | | | | |
| Hammer Gray | | G | | | | | | | | | | | | | |
| 11. Bottom Panel | | | | | | | | | | | | | | | |
| Solid Bottom | | 1 | | | | | | | | | | | | | |
| Bottom Panel with Removable Gland Plates | | 2 | | | | | | | | | | | | | |
| 12. Top Panel | | | | | | | | | | | | | | | |
| Solid Metal Top Panel | | 1 | | | | | | | | | | | | | |
| Gland Top Panel | | 2 | | | | | | | | | | | | | |
| Exhaust Top Panel with Filter Fan, 11.5" (291 mm), 441 CFM (749 CMH), 115 VAC | | 3 | | | | | | | | | | | | | |

- Notes:
- Intake Filter Fans and Intake Filters are located on the bottom half of the door; Cooling Unit is centered on the door.
 - When using fans, there should be one intake and one exhaust of the same size. Recommended configuration is intake filter fan and exhaust filter.
 - If Intake Door Assembly is selected for the Front Door, select an Exhaust Door Assembly for the Rear Door with the same size filter or filter fan.
 - If AC Door Assembly is selected, select a Solid Metal Door or a Fixed Rear Metal Panel for the Rear Door and Metal Side Panel Assemblies.

- Notes:
- Omit Side Panels when buying cabinets.
 - Use Side Panel Assemblies with Filter Fans or Cooling Units with solid front and rear doors.
 - Use Side Panel Assembly with Filters only with Top Panel Fan Kit.

For the full line of enclosure configurations, use the RMR Product Designer at www.chatsworth.com/product-designer



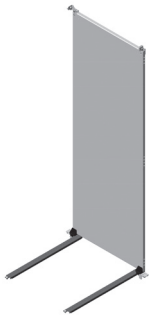
| | |
|--|---|
| 7. Rear Door (Hinges on Right Side) | |
| 1 | Single-Sided Metal Door |
| 2 | Fixed Rear Metal Panel (no hinges, no latch) |
| 3 | Exhaust Door Assembly with Filter Fan, 7" (177 mm), 65 CFM (110 CMH), 115 VAC |
| 4 | Exhaust Door Assembly with Filter Fan, 11.5" (291 mm), 560 CFM (951 CMH), 115 VAC |
| 5 | Exhaust Door Assembly with Filter Fan, 7" (177 mm), 65 CFM (110 CMH), 230 VAC |
| 6 | Exhaust Door Assembly with Filter Fan, 11.5" (291 mm), 560 CFM (951 CMH), 230 VAC |
| 7 | Exhaust Door Assembly with Filter, 7" (177 mm) |
| 8 | Exhaust Door Assembly with Filter, 11.5" (291 mm) |

- Notes:
- Exhaust Filter Fans and Filters are located on the top half of the door.
 - When using fans, there should be one intake and one exhaust of the same size. Recommended configuration is intake filter fan and exhaust filter.
 - If an Exhaust Door Assembly is selected for the Rear Door, select an Intake Door Assembly for the Front Door with the same size filter or filter fan.

GENERAL ACCESSORIES

Mounting Plates for RMR Modular Enclosures

Mounting Plates are used to surface mounting automation and control system electronics and industrial instrumentation.



RMR Modular Enclosure Full-Height Mounting Plate Assembly

Full-Height Mounting Plates are solid metal panels that are installed in a side-to-side orientation of the enclosure frame. Mounting panels can be adjusted in depth by 1" (25 mm) increments. Full-Height Mounting Plate Assembly with Lower Support Rails can be ordered with the enclosure.



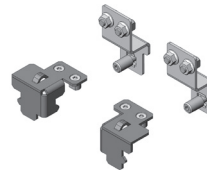
RMR Modular Enclosure Full-Height Baying Mounting Plate Assembly

Full-Height Baying Mounting Plates are installed between two Full-Height Mounting Plates when enclosures are bayed (attached side-by-side). This creates a continuous mounting surface, connecting the two Full-Height Mounting Plates.

| Part Numbers for 23.6"W (600 mm) Enclosure | | | | Enclosure Height in (mm) | Plate Size | |
|--|------------|-------------|-------------|--------------------------|----------------|---------------|
| 23.6 (600) | 31.5 (800) | 39.4 (1000) | 47.2 (1200) | | Height in (mm) | Width in (mm) |
| Enclosure Depth - in (mm) | | | | | | |
| 37780-X13 | 37780-X25 | 37780-X37 | 37780-X49 | 47.2 (1200) | 46.9 (1192) | 22.9 (582) |
| 37780-X15 | 37780-X27 | 37780-X39 | 37780-X51 | 78.7 (2000) | 78.4 (1992) | 22.9 (582) |
| 37780-X16 | 37780-X28 | 37780-X40 | 37780-X52 | 82.7 (2100) | 82.3 (2091) | 22.9 (582) |
| 37780-X17 | 37780-X29 | 37780-X41 | 37780-X53 | 86.6 (2200) | 86.3 (2193) | 22.9 (582) |

| Part Numbers for 31.5"W (800 mm) Enclosure | | | | Enclosure Height in (mm) | Plate Size | |
|--|------------|-------------|-------------|--------------------------|----------------|---------------|
| 23.6 (600) | 31.5 (800) | 39.4 (1000) | 47.2 (1200) | | Height in (mm) | Width in (mm) |
| Enclosure Depth - in (mm) | | | | | | |
| 37780-X67 | 37780-X79 | 37780-X91 | 37780-XA4 | 47.2 (1200) | 46.9 (1192) | 30.8 (783) |
| 37780-X69 | 37780-X81 | 37780-X93 | 37780-XA6 | 78.7 (2000) | 78.4 (1992) | 30.8 (783) |
| 37780-X70 | 37780-X82 | 37780-X94 | 37780-XA7 | 82.7 (2100) | 82.3 (2091) | 30.8 (783) |
| 37780-X71 | 37780-X83 | 37780-X95 | 37780-XA8 | 86.6 (2200) | 86.3 (2193) | 30.8 (783) |

X=Color: C=Black, G=Hammer Gray. Shipping Weights vary by part number: 47 to 107 lb (21.4 to 48.6 kg).



Bracket Kit for Inset Mount of Full-Height Mounting Plate

Bracket Kit is an alternate method for mounting the Full-Height Mounting Plate. It positions the plate at the very back of the enclosure in a fixed position inset into the rear opening of the frame.

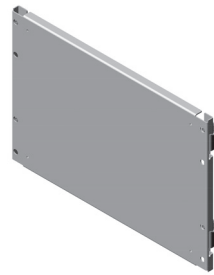
| Part Number | Shipping Weight lb (kg) |
|-------------|-------------------------|
| 37777-X01 | 6 (2.8) |

X=Color: C=Black, G=Hammer Gray.



Half-Height Mounting Plate for RMR Enclosure Systems

Half-Height Mounting Plates are solid metal panels that can be mounted in multiple orientations—front-to-rear or side-to-side—directly to the uprights of the frame. The 23.6"W (600 mm) plates can also be mounted directly to 19"EIA square punched or threaded rails.



Quarter-Height Mounting Plate for RMR Enclosure Systems

Quarter-Height Mounting Plates are solid metal panels that can be mounted in multiple orientations—front-to-rear or side-to-side—directly to the uprights of the frame. The 23.6"W (600 mm) plates can also be mounted directly to 19"EIA square-punched or threaded rails.

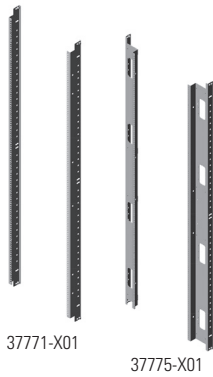
| RMR Modular Enclosure Half-Height Mounting Plate Assembly | | | | | | |
|---|------------|-------------|-------------|--------------------------|----------------|---------------|
| Part Number Enclosure Depth or Width - in (mm) | | | | Enclosure Height in (mm) | Plate Size | |
| 23.6 (600) | 31.5 (800) | 39.4 (1000) | 47.2 (1200) | | Height in (mm) | Width in (mm) |
| 37840-X13 | 37840-X25 | 37840-X37 | 37840-X49 | 47.2 (1200) | 31.1 (536) | * |
| 37840-X15 | 37840-X27 | 37840-X39 | 37840-X51 | 78.7 (2000) | 78.4 (1992) | * |
| 37840-X16 | 37840-X28 | 37840-X40 | 37840-X52 | 82.7 (2100) | 82.3 (2091) | * |
| 37840-X17 | 37840-X29 | 37840-X41 | 37840-X53 | 86.6 (2200) | 86.3 (2193) | * |

*Calculate plate size width by subtracting approximately 3.0" (75 mm) from enclosure depth or width; for example, the plate size width for a 23.6"W (600 mm) enclosure is approximately 20.6"W (525 mm). X=Color; C=Black, G=Hammer Gray. *Shipping weights vary by part number: 18 to 73 lb (8.2 to 33.2 kg).

| RMR Modular Enclosure Quarter-Height Mounting Plate Assembly | | | | | | |
|--|------------|-------------|-------------|--------------------------|----------------|---------------|
| Part Number Enclosure Depth or Width - in (mm) | | | | Enclosure Height in (mm) | Plate Size | |
| 23.6 (600) | 31.5 (800) | 39.4 (1000) | 47.2 (1200) | | Height in (mm) | Width in (mm) |
| 37842-X14 | 37842-X26 | 37842-X38 | 37842-X50 | 70.9 (1800) | 16.5 (420) | * |
| 37842-X15 | 37842-X27 | 37842-X39 | 37842-X51 | 78.7 (2000) | 18.5 (470) | * |
| 37842-X16 | 37842-X28 | 37842-X40 | 37842-X52 | 82.7 (2100) | 19.4 (493) | * |
| 37842-X17 | 37842-X29 | 37842-X41 | 37842-X53 | 86.6 (2200) | 20.4 (519) | * |

*Calculate plate size width by subtracting approximately 3.0" (75 mm) from enclosure depth or width; for example, the plate size width for a 23.6"W (600 mm) enclosure is approximately 20.6"W (525 mm). X=Color; C=Black, G=Hammer Gray. *Shipping weights vary by part number: 18 to 73 lb (8.2 to 33.2 kg).

GENERAL ACCESSORIES (continued)



Equipment Mounting Rails

Equipment Mounting Rails attach directly to frame of the enclosure or to optional front-to-rear horizontal support slides, and support 19" EIA (482.6 mm) rack-mount equipment. Equipment Mounting Rails can be ordered with the enclosure.

- Adjustable-depth, support 19" EIA (482.6 mm) rack-mount equipment
- Universal (vertical) hole pattern, 1U are 1.75"H (44.45 mm)
- U are marked and numbered on the mounting rail
- 12-24 tapped for screws or multi-mount (square-punched) for cage nuts
- Electrically bonded to the enclosure frame
- Optional Front-to-Rear Horizontal Slides available (includes six slides)



Front-to-Rear Horizontal Support Slides for RMR Modular Enclosure

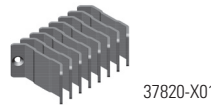
Front-to-Rear Horizontal Support Slides are used with equipment rails. Includes six slides.

| Part Number | Enclosure Depth in (mm) | Shipping Weight lb (kg) |
|-------------|-------------------------|-------------------------|
| 37770-X03 | 23.6 (600) | 26 (11.8) |
| 37770-X05 | 31.5 (800) | 34 (15.5) |
| 37770-X07 | 39.4 (1000) | 41 (18.6) |
| 37770-X09 | 47.2 (1200) | 49 (22.3) |

X=color: C=Black, G=Hammer Gray.

| Multi-Mount (Square Punched) Rails for RMR Modular Enclosure | | | | |
|--|------------|--------------------------|-----------------------|-------------------------|
| Part Number | | Enclosure Height in (mm) | Rack-Mount Spaces (U) | Shipping Weight lb (kg) |
| Enclosure Width – in (mm) | | | | |
| 23.6 (600) | 31.5 (800) | | | |
| 37771-X01 | 37772-X01 | 47.2 (1200) | 24 | 19 (8.7) |
| 37771-X03 | 37772-X03 | 78.7 (2000) | 42 | 30 (13.7) |
| 37771-X04 | 37772-X04 | 82.7 (2100) | 45 | 31 (14.1) |
| 37771-X05 | 37772-X05 | 86.6 (2200) | 47 | 33 (15.0) |

| Tapped #12-24 Equipment Rails for RMR Modular Enclosure | | | | |
|---|------------|--------------------------|-----------------------|-------------------------|
| Part Number | | Enclosure Height in (mm) | Rack-Mount Spaces (U) | Shipping Weight lb (kg) |
| Enclosure Width – in (mm) | | | | |
| 23.6 (600) | 31.5 (800) | | | |
| 37774-X01 | 37775-X01 | 47.2 (1200) | 24 | 20 (9.1) |
| 37774-X03 | 37775-X03 | 78.7 (2000) | 42 | 31 (14.1) |
| 37774-X04 | 37775-X04 | 82.7 (2100) | 45 | 32 (14.6) |
| 37774-X05 | 37775-X05 | 86.6 (2200) | 47 | 33 (15.0) |



37820-X01

Baying Kits for RMR Enclosure Systems

Baying Kits attach, or bay, two RMR Modular Enclosures together side-by-side.

- Brackets maintain the space between enclosures to ensure a tight seal
- Enclosures must be the same height and depth
- Side panels are removed or omitted from the both enclosures before the enclosures are bayed

RMR Modular Enclosure Baying Accessory Kit

Includes eight external baying brackets, two flat brackets and microcellular urethane foam seal to fill gap between enclosures.

RMR Modular Enclosure Internal Baying Accessory Kit With Seal

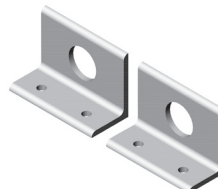
Includes four corner baying brackets, four flat brackets and microcellular urethane foam seal to fill gap between enclosures.



37825-X01

RMR Modular Enclosure Eyebolt Baying Kit

Creates lifting points at front and rear center of two bayed enclosures. Includes two eyebolt baying brackets and installation hardware. Use with a Baying Accessory Kit.



37823-X01

| Part Number | Description | Shipping Weight lb (kg) |
|-------------|---|-------------------------|
| 37820-X01 | Baying Accessory Kit | 5 (2.3) |
| 37825-X01 | Internal Baying Accessory Kit With Seal | 6 (2.8) |
| 37823-001 | Eyebolt Baying Kit | 7 (3.2) |

X=color: C=Black, G=Hammer Gray.



RMR Modular Enclosure Plinth Base

Plinth Base is a structural mounting base that creates a lift, which can be used to service and route cables through the bottom panel of the enclosure.

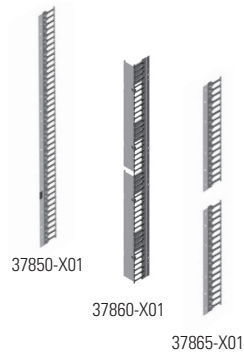
- 4"H (100 mm) or 8"H (200 mm) lift options
- Features kick plates that surround the base of the enclosure
- Includes: Metal structure and assembly hardware
- Material: Steel

| RMR Modular Enclosure Plinth Base | | | | |
|-----------------------------------|-------------|---------------|---------------|-------------------------|
| Part Number – Plinth Height | | Width in (mm) | Depth in (mm) | Shipping Weight lb (kg) |
| 4" (100 mm) | 8" (200 mm) | | | |
| 37830-X03 | 37830-X21 | 23.6 (600) | 23.6 (600) | 40 (18.2) |
| 37830-X05 | 37830-X23 | 23.6 (600) | 31.5 (800) | 44 (20.0) |
| 37830-X07 | 37830-X25 | 23.6 (600) | 39.4 (1000) | 48 (21.8) |
| 37830-X09 | 37830-X27 | 23.6 (600) | 47.2 (1200) | 52 (23.6) |
| 37830-X12 | 37830-X30 | 31.5 (800) | 23.6 (600) | 44 (20.0) |
| 37830-X14 | 37830-X32 | 31.5 (800) | 31.5 (800) | 48 (21.8) |
| 37830-X16 | 37830-X34 | 31.5 (800) | 39.4 (1000) | 52 (23.6) |
| 37830-X18 | 37830-X36 | 31.5 (800) | 47.2 (1200) | 56 (25.5) |

X=color: C=Black, G=Hammer Gray. Shipping weights are for 8" (200 mm) plinth height.



GENERAL ACCESSORIES: CABLE MANAGEMENT



Finger Cable Manager

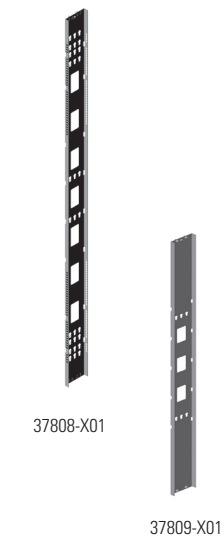
Finger Cable Manager is a T-shaped cable guide that creates a pathway for cables next to the 19" EIA (482.6 mm) equipment mounting rails and guides cables into each U space. Wider configurations for 31.5"W (800 mm) enclosures also feature a protective cover.

- Attaches to and adjusts with mounting rails
- Passes up to 24 cables per U space through openings on Short Finger Cable Manager
- Hinged cover on wider configurations, 31.5"W (800 mm) enclosures, snaps closed to secure cables
- Includes: Finger Cable Manager, cover (on wider managers) and installation hardware

| RMR Modular Enclosure Short Finger Cable Manager (for use on 19" EIA Rails) | | | | |
|---|------------|--------------------------|-----------------------|-------------------------|
| Part Number | | Enclosure Height in (mm) | Rack-Mount Spaces (U) | Shipping Weight lb (kg) |
| Enclosure Width – in (mm) | | | | |
| 23.6 (600) | 31.5 (800) | | | |
| 37850-X01 | 37860-X01 | 47.2 (1200) | 24 | 14 (6.4) |
| 37850-X03 | 37860-X03 | 78.7 (2000) | 42 | 16 (7.3) |
| 37850-X04 | 37860-X04 | 82.7 (2100) | 45 | 21 (9.6) |
| 37850-X05 | 37860-X05 | 86.6 (2200) | 47 | 22 (10.0) |

| RMR Modular Enclosure Short Finger Cable Manager (for use on 19" EIA Rails and Horizontal Support Slides) | | | | |
|---|------------|--------------------------|-----------------------|-------------------------|
| Part Number | | Enclosure Height in (mm) | Rack-Mount Spaces (U) | Shipping Weight lb (kg) |
| Enclosure Width – in (mm) | | | | |
| 23.6 (600) | 31.5 (800) | | | |
| 37865-X01 | 37860-X01 | 47.2 (1200) | 24 | 8 (3.7) |
| 37865-X03 | 37860-X03 | 78.7 (2000) | 42 | 10 (4.6) |
| 37865-X04 | 37860-X04 | 82.7 (2100) | 45 | 11 (5.0) |
| 37865-X05 | 37860-X05 | 86.6 (2200) | 47 | 11 (5.0) |

X= Color; C=Black, G=Hammer Gray. Shipping weights are for 800 mm wide enclosures. P/N 3780-XXX can be used with Horizontal Support Slides.



RMR Modular Enclosure Dual PDU Bracket

Full-Height Dual PDU Mounting Bracket supports two vertical PDUs side-by-side and has multiple slots for CPI Saf-T-Grip® Straps or tie wraps to secure cords to the bracket.

- Attaches to the frame, adjusts in depth independent of the mounting rails
- Dual bracket is 4.8"W (121 mm) and supports two PDUs up to 2.2"W (51 mm) side-by-side
- Includes: Brackets, installation hardware

| RMR Modular Enclosure Full-Height Dual PDU Bracket | | |
|--|--------------------------|-------------------------|
| Part Number | Enclosure Height in (mm) | Shipping Weight lb (kg) |
| 37808-X03 | 78.7 (2000) | 12 (5.5) |
| 37808-X04 | 82.7 (2100) | 13 (5.9) |
| 37808-X05 | 86.6 (2200) | 13 (5.9) |

| RMR Modular Enclosure Half-Height Dual PDU Bracket | | |
|--|--------------------------|-------------------------|
| Part Number | Enclosure Height in (mm) | Shipping Weight lb (kg) |
| 37809-X01 | 47.2 (1200) | 10 (4.6) |

X=color: C=Black, G=Hammer Gray.



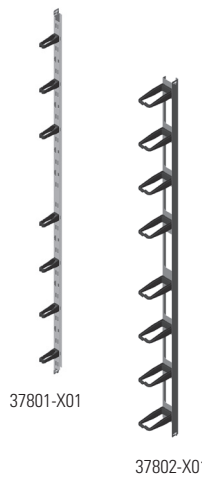
RMR Modular Enclosure Cable Lashing Bracket

Cable Lashing Bracket creates a simple, separate vertical pathway for a small bundle of cables and has multiple slots for CPI Saf-T-Grip Straps or tie wraps to secure cables to the bracket.

- Attaches to the frame, adjusts in depth independent of the mounting rails
- Bracket is 1.6"W (41 mm)
- Includes: Brackets, installation hardware; order Saf-T-Grips or cable ties separately

| Part Number | Enclosure Depth in (mm) | Shipping Weight lb (kg) |
|-------------|-------------------------|-------------------------|
| 37800-X01 | 47.2 (1200) | 7 (3.2) |
| 37800-X03 | 78.7 (2000) | 9 (4.1) |
| 37800-X04 | 82.7 (2100) | 9 (4.1) |
| 37800-X05 | 86.6 (2200) | 9 (4.1) |

X=color: C=Black, G=Hammer Gray.



RMR Modular Enclosure Ring Cable Manager

Ring Cable Manager is a ring-shaped cable guide that creates a separate vertical pathway for cables, independent of the equipment mounting rails.

- Attaches to the frame, adjusts in depth independent of the mounting rails
- Rings have an opening on the front for easy addition or removal of cables
- Includes: Brackets, rings and installation hardware
- Material: Steel brackets, plastic rings

| Part Number | | Enclosure Height in (mm) | Shipping Weight lb (kg) |
|---------------------------|------------|--------------------------|-------------------------|
| Enclosure Width – in (mm) | | | |
| 23.6 (600) | 31.5 (800) | | |
| 37801-X01 | 37802-X01 | 47.2 (1200) | 11 (5.0) |
| 37801-X03 | 37802-X03 | 78.7 (2000) | 14 (6.4) |
| 37801-X04 | 37802-X04 | 82.7 (2100) | 14 (6.4) |
| 37801-X05 | 37802-X05 | 86.6 (2200) | 14 (6.4) |

X= Color; C=Black, G=Hammer Gray. Shipping weights are for 800 mm wide.



RMR Modular Enclosure Short Ring Cable Manager

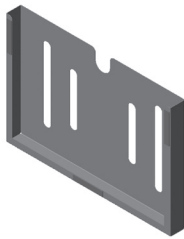
Short Ring Cable Manager includes a set of four 7U high brackets that create a pathway for cables next to the 19" EIA (482.6 mm) equipment mounting rails.

- Attaches to and adjusts with mounting rails
- Brackets have slots for securing cable bundles with Saf-T-Grips or tie wraps
- Rings have an opening on the front for easy addition or removal of cables
- Includes: Brackets, rings and installation hardware

| Part Number | Shipping Weight lb (kg) |
|-------------|-------------------------|
| 37803-X01 | 10 (4.6) |

X=color: C=Black, G=Hammer Gray.

GENERAL ACCESSORIES: OTHER ACCESSORIES



Document Holder for RMR Industrial Enclosure
Document Holder attaches to the enclosure with double backed adhesive tape.

| Part Number | Document Size | Shipping Weight lb (kg) |
|-------------|---------------|-------------------------|
| 37739-X01 | A4 | 4 (1.9) |
| 37739-X02 | A3 | 5 (2.3) |

X=color: C=Black, G=Hammer Gray.



40160-072

Vertical Rack Busbar
Vertical Rack Busbar provides a common bonding point for rack-mount equipment. Busbar is 5/8" x 1/4" (15.88 mm x 6.4 mm) hard-drawn electrolytic tough pitch 110 alloy copper with attachment points for ground lugs. Attachment points are tapped 1/4-20, and accept two-hole lugs with 1/4" holes on 5/8 in centers. Order RMR Modular Enclosure Vertical Busbar Mounting Kit separately.

| Part Number | Length in (mm) | Attachment Points | Shipping Weight lb (kg) |
|-------------|----------------|-------------------|-------------------------|
| 40160-036 | 36 (910) | 8 | 4 (1.8) |
| 40160-072 | 72 (1830) | 13 | 5 (2.3) |



37940-001



37941-001



37942-001



37943-001

RMR Modular Enclosure Hardware Kits

Hardware Kits are used to attach plates, rails and accessories to the RMR Modular Enclosure frame. The interior of the frame is punched with attachment points on 1" (25 mm) increments. Traditional thread-forming screws allow direct attachment to the frame. Drop-in bolts and nuts speed installation and still provide a bonded connection.

| Part Number | Description | Shipping Weight lb (kg) |
|-------------|--|-------------------------|
| 37940-001 | M5.5 x 9 Torx Panhead Thread-Forming Screw | 2 (0.9) |
| 37941-001 | M8 x 14 Drop-in Hammer Head Bolt & M8 Flange Nut | 3 (1.4) |
| 37942-001 | M6 Drop-in Nut & M6 Hex Head Flange Screw | 3 (1.4) |

Ships in packs of 20.

RMR Modular Enclosure Vertical Busbar Mounting Kit (for frame and rail mount)

| | |
|-----------|-------|
| 37943-001 | 2 (1) |
|-----------|-------|

Order Busbar separately.

SEALING ACCESSORIES



RMR EPDM Snap-In Liquid Tight Grommet

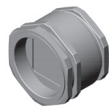
Snap-In Liquid Tight Grommet keeps liquids from leaking through cable openings.

- Meets NEMA Type 12 and IP 55 protection ratings
- Accepts a single cable with diameter range 1.06"-1.38" (27-35 mm)
- Knock-out panel opening should be 1.98" (50 mm)
- Fits panel thickness range 0.05"-0.20" (1.3-5.1 mm)

| Part Number | Shipping Weight lb (kg) |
|-------------|-------------------------|
| 37115-001 | 4 (1.5) |



37913-001



37917-001

Roxtec Sealing Systems for RMR Enclosure Systems

Roxtec sealing solutions maintain the enclosure's NEMA Type 12 and IP 55 protection ratings around cable openings.

- Compact seals provide equipment protection against water, dust, insects and rodents
- Two-piece grommet assembly includes a frame and multidiameter modules that seal around cables
- Each grommet includes several modules to pass multiple cables of various diameters

| Part Number | Roxtec Model Frame/Modules | Cutout Size Width in (mm) | Depth in (mm) | # of Cables | Cable Diameter Range in (mm) | Shipping Weight lb (kg) |
|-------------|----------------------------|---------------------------|---------------|-------------|------------------------------|-------------------------|
| 37912-001 | ComSeal 10/10 | 2.2 (56) | 5.8 (149) | 10 | 0.138 - 0.650 (3.5 - 16.5) | 4 (1.9) |
| 37913-001 | ComSeal 15/3 | 2.4 (61) | 7.6 (195) | 3 | 1.102 - 1.693 (28 - 43) | 4 (1.9) |
| 37914-001 | ComSeal 1616 | 2.2 (56) | 8.2 (209) | 16 | 0.138 - 0.650 (3.5 - 16.5) | 4 (1.9) |
| 37915-001 | ComSeal 32/32 | 4.0 (103) | 8.2 (209) | 32 | 0.138 - 0.650 (3.5 - 16.5) | 4 (1.9) |

RMR Enclosure Gland Seal

| | | | | | | |
|-----------|----------|----------|----------|---|----------------------------|---------|
| 37916-001 | RG M63/4 | 2.5 (63) | .157 (4) | 4 | 0.138 - 0.650 (3.5 - 16.5) | 4 (1.9) |
| 37917-001 | RG M63/9 | 2.5 (63) | .157 (4) | 9 | 0.138 - 0.650 (3.5 - 16.5) | 4 (1.9) |

Note: On ComSeal, allow a 15 mm clearance around the cutout for securing the grommet to the enclosure. On RG M63, allow a 10 mm diameter space around the cutout for securing the grommet. The ComSeal frame is .59"H (15 mm). The RG M63 frame is 2 "H (51.5 mm). Refer to installation instructions for exact cutout dimensions.

Thermal Management Accessories

Thermal Management Accessories are ordered as service parts when selecting the enclosure. See enclosure ordering table on Page 4 for options.

Interested in learning more about our RMR Industrial Enclosures? Call us at 800-834-4969, or email

Technical Support at techsupport@chatsworth.com.



Scan or click here to visit our CPI Online Catalog.



CHATSWORTH PRODUCTS

While every effort has been made to ensure the accuracy of all information, CPI does not accept liability for any errors or omissions and reserves the right to change information and descriptions of listed services and products.

©2016 Chatsworth Products, Inc. All rights reserved. Chatsworth Products, CPI, CPI Passive Cooling, eConnect, MegaFrame, Saf-T-Grip, Seismic Frame, SlimFrame, TeraFrame, GlobalFrame, CUBE-IT PLUS, Evolution, OnTrac, QuadraRack and Velocity are federally registered trademarks of Chatsworth Products. Simply Efficient, Secure Array, EuroFrame and Klik-Nut are trademarks of Chatsworth Products. All other trademarks belong to their respective companies. Rev.3 10/16 MKT-60020-662