

# Installation Instructions

## RMR EXTERNAL BAYING BRACKET KIT

### Safety Information



**WARNING:** Improper use of this product may lead to serious injury. Read and understand all instructions for proper installation and use of this product.

### Included Hardware

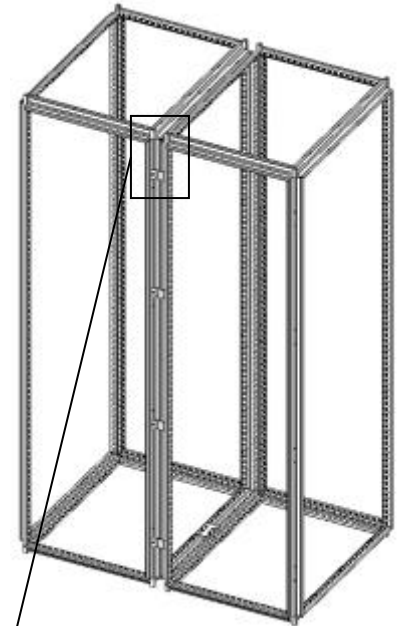
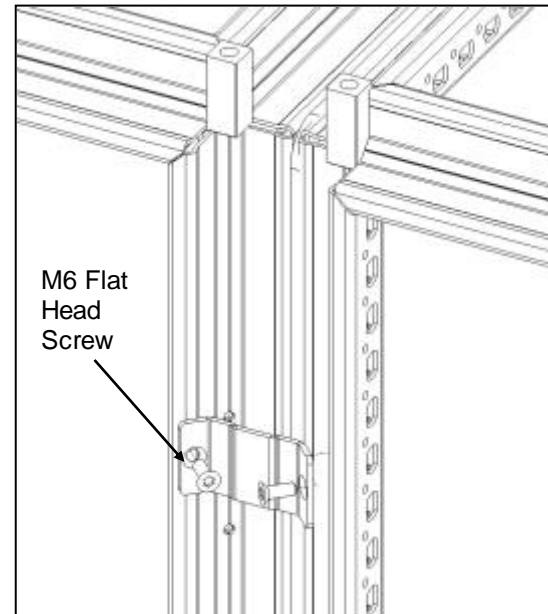
(16) M6 Torx Flathead Screws

### Tools Required

T25 Torx Screw Driver

### Assembly Sequence

1. Connect the front of the two cabinets together with four external brackets along the outside vertical frame members using M6 Torx flat head screws. Use the empty hole locations directly below or above the hinges. Repeat external bracket installation at rear of the cabinet.



IIS-737821, 08/19/16, Rev. 1, CPI/JAG

800-834-4969 (USA & Canada) • [www.chatsworth.com](http://www.chatsworth.com) • [techsupport@chatsworth.com](mailto:techsupport@chatsworth.com)

For international phone numbers, see our website or contact CPI Tech Support.

*This drawing contains proprietary and confidential information and is protected by U.S. and international law. Unauthorized reproduction, disclosure or use of the drawing or the information therein is expressly forbidden except as agreed to in writing by Chatsworth Products, Inc.*