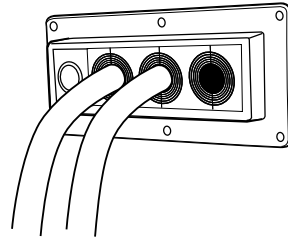


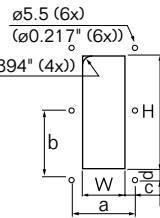
Installation instructions
 Roxtec ComSeal™ 10
 Roxtec ComSeal™ 12
 Roxtec ComSeal™ 15
 Roxtec ComSeal™ 16
 Roxtec ComSeal™ 32



Aperture dimensions

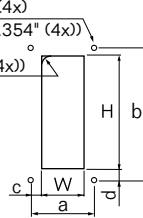
ComSeal™ 10

	(mm)	(in)
H	149±1	5.866±0.039
W	56±1	2.205±0.039
a	68.5±0.5	2.697±0.020
b	80.5±0.5	3.170±0.020
c	6.25±1	0.246±0.039
d	6±1	0.236±0.039



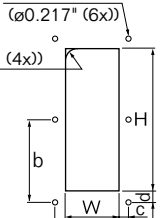
ComSeal™ 12

	(mm)	(in)
H	169±1	6.654±0.039
W	56±1	2.205±0.039
a	62±0.5	2.441±0.020
b	193±0.5	7.598±0.020
c	3±1	0.118±0.039
d	12±1	0.472±0.039



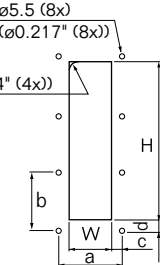
ComSeal™ 15

	(mm)	(in)
H	195±1	7.677±0.039
W	61±1	2.402±0.039
a	78.5±0.5	3.091±0.020
b	105.5±0.5	4.154±0.020
c	9±1	0.354±0.039
d	8±1	0.315±0.039



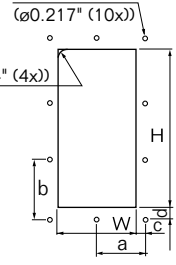
ComSeal™ 16

	(mm)	(in)
H	209±1	8.228±0.039
W	56±1	2.204±0.039
a	68.5±0.5	2.697±0.020
b	73.7±0.5	2.901±0.020
c	6.25±1	0.246±0.039
d	6±1	0.236±0.039



ComSeal™ 32

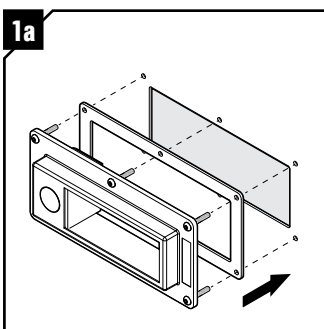
	(mm)	(in)
H	209±1	8.228±0.039
W	103±1	4.055±0.039
a	61.5±0.5	2.421±0.020
b	76.3±1	3.005±0.039
c	10±1	0.394±0.039
d	10±1	0.394±0.039



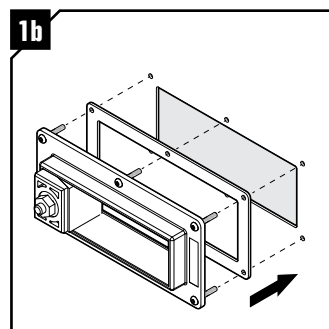
Cut a rectangular opening for the frame, according to the tables above. For Roxtec ComSeal™ 12 cut a rectangular opening according to FL 21 or the table above.

Use a counter flange with Roxtec ComSeal™ 12 (article no. 2CV0001020219) if the wall structure is thinner than 2 mm.

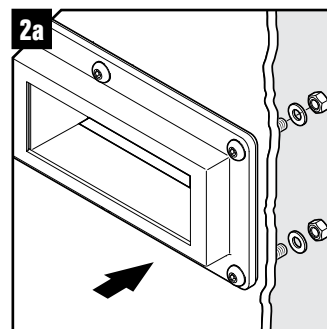
Installation



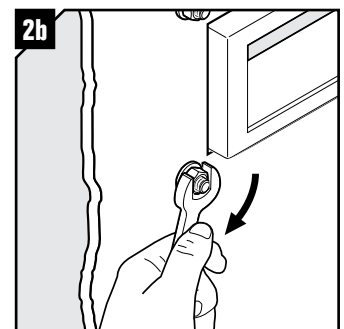
Insert the frame in the opening with gasket side towards the wall/structure. Use the screws for keeping the gasket in place.



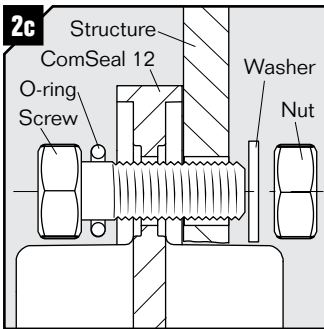
Alternatively, insert it with the other side of the flange and gasket facing the wall/structure.



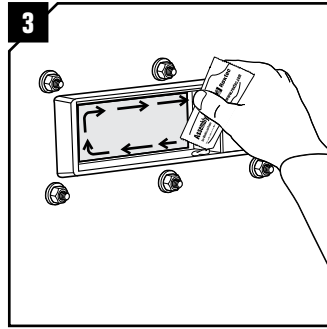
Attach the frame firmly, using the enclosed screws, washers and nuts.



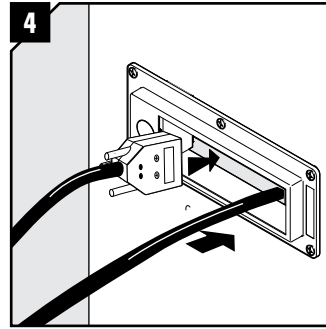
Tighten the nuts firmly, crosswise and in small steps.



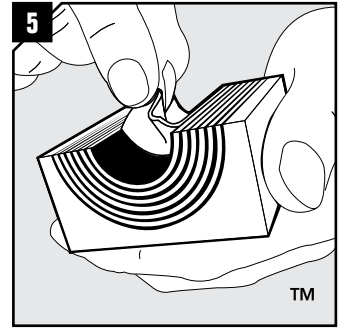
For ComSeal 12, attach the frame firmly, using the enclosed screws, nuts, o-rings and washers. Make sure that the o-ring is mounted under the bolt head.



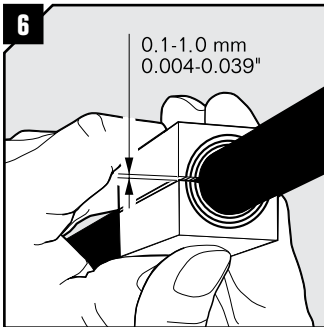
Lubricate the inside surfaces of the frame with Roxtec Assembly Gel, especially in the corners.



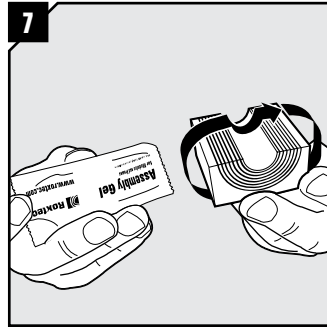
Insert the cables through the frame.



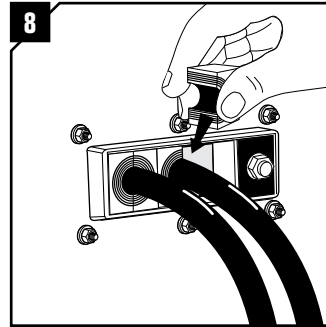
Adapt the modules, which are to hold cables or pipes. Peel off layers until you achieve the gap seen in step 6. The halves may not differ by more than one layer.



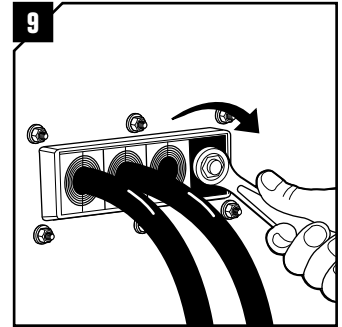
Achieve a 0.1-1.0 mm gap between the two module halves when held against the cable/pipe.



Lubricate all modules thoroughly, both on the inside and the outside surfaces, before installation.



Insert the modules from the back of the frame opening and according to the installation plan (Packing plan). If possible, start with the largest modules.



Tighten the compression unit firmly to seal the frame. Maximum 10 Nm (7.38 ft. lb). A good indication is when the assembly gel is squeezed out between the modules.

Disassembly

Reverse order.

Note

- For optimum reliability, wait 24 hours or longer after installation before exposing the cables/pipes to strain or pressure.
- To be used together with CM modules.
- To simplify installation of Roxtec ComSeal™ 32, it is recommended to fill both openings before tightening the compression units.
- Cables shall go straight through the frame.