

RMR Enclosure Gland Seal

RG M63—gland seals by Roxtec, combine the traditional gland technique with unique technology for flexibility and adaptability. The result is a new generation of glands with improved capacity and functionality. RG M63 has a compact design that makes it well suited for small areas. It can seal between one to nine cables with diameters ranging from 0.138" to 1.280".

SPECIFICATIONS

Type: Roxtec Gland M63

External dimensions: Ø 2.874" x 2.047"

Packing Space* (mm): 40 x 40

Hole dimension in cabinet: Ø 2.500" - 2.520"

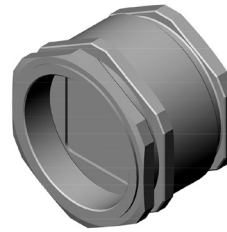
Material: Nickel plated brass, PA 6, galvanized mild steel, EPDM rubber

Rating: UL/NEMA 4, 4x, 12 and 13

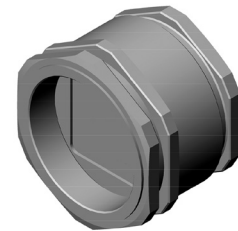
CSA 4, 4x, 12 and 13

IP 66/67 according to IEC 60529

- Maximum thickness of cabinet wall is 0.158" with lock nut.
- Also available in stainless steel
- Recommended knockout punch: Greenlee hole punch (size 2.52"/ISO 63)



37916-001



37917-001

ORDERING INFORMATION

Part Number	Roxtec Model Frame/Modules	Cutout Size Width in (mm)	Depth in (mm)	# of Cables	Cable Diameter Range in (mm)	Shipping Weight lb (kg)
37916-001	RG M63/4	2.5 (63) Ø	.157 (4)	4	.138-.650 (3.5-16.5)	4 (1.9)
37917-001	RG M63/9	2.5 (63) Ø	.157 (4)	9	.138-.413 (3.5-10.5)	4 (1.9)

The RG M63 frame is 2"H (51.5 mm). Refer to installation instructions for exact cutout dimensions.

For product CSI Specs, visit the Support & Downloads page on www.chatsworth.com.

US & Canada

+1-800-834-4969
 Toronto, Ontario, Canada
 +905-850-7770
chatsworth.com
techsupport@chatsworth.com

Latin America

+52-55-5203-7525
 Toll Free within Mexico
 01-800-01-7592
chatsworth.com.co

Europe

+44-1628-524-834
chatsworthproducts.co.uk

Middle East & Africa

Dubai, UAE
 +971-4-2602125
chatsworth.ae

Asia Pacific

+86 21 6880-0266
chatsworth.com.cn



CHATSWORTH
 PRODUCTS