

Installation Instructions

Cable Ring Kit for Motive™ Single-Sided Vertical Cable Manager

Included Hardware:

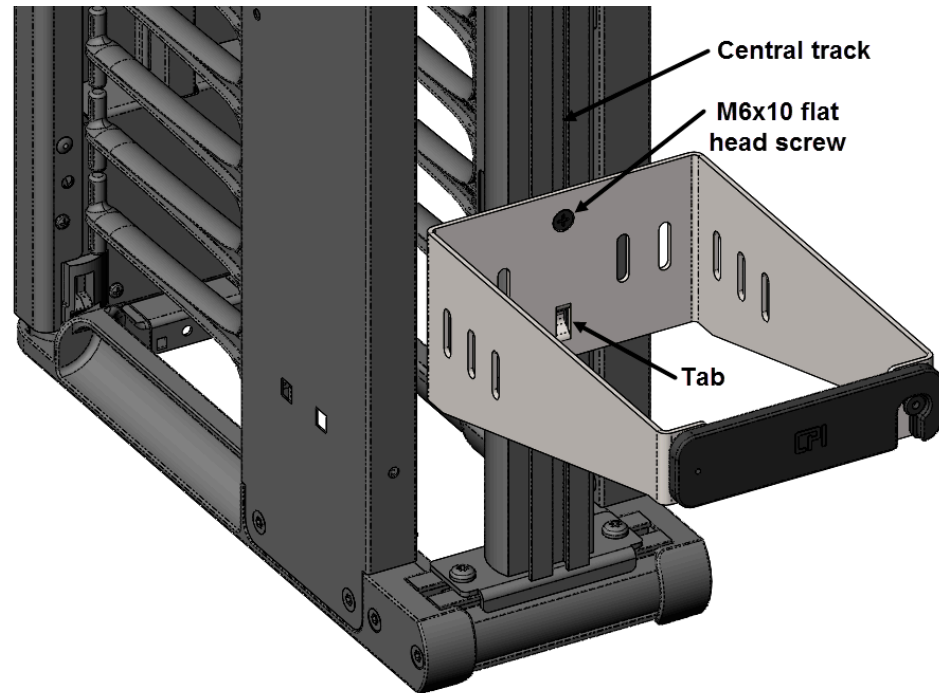
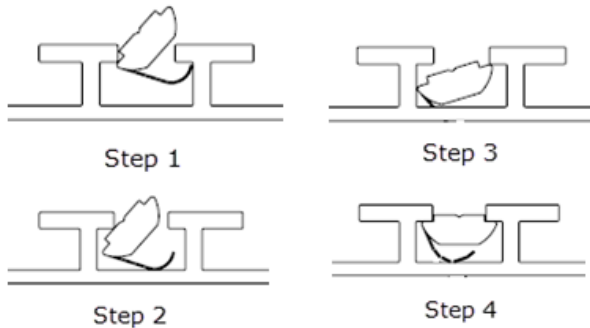
Qty.	Description
5	Cable Ring Assemblies
5	M6 x 10 Flat Head Screws
5	M6 Drop-in Spring Nuts

Tools Required:

#2 Phillips Screwdriver

Assembly Sequence:

1. Install the five M6 drop-in nuts in the central track at the rear of the cable manager as shown below.
2. Secure cable ring to central track in desired locations using M6 x 10 flat-head screw. Ensure cable ring is positioned with the screw head toward the top of the cable ring and that the lower tab is in the central track as shown at right.



The central track on every Motive Vertical Cable Manager includes RMU numbering for quick and consistent positioning of accessories. Listed below are recommended ring spacing per manager height.

Cable Ring Spacing:

72"H (1.8 m) = 8U	90"H (2.3 m) = 10U
78"H (2.0 m) = 8U	96"H (2.4 m) = 10U
84"H (2.1 m) = 9U	108"H (2.7 m) = 12U



IIS-732573, 12/22/17, Rev. 1, CPI/BDK
800-834-4969 (USA & Canada) • www.chatsworth.com • techsupport@chatsworth.com
For international phone numbers, see our website or contact CPI Tech Support.

This drawing contains proprietary and confidential information and is protected by U.S. and international law. Unauthorized reproduction, disclosure or use of the drawing or the information therein is expressly forbidden except as agreed to in writing by Chatsworth Products, Inc.