

Frequently Asked Questions

CPI Fiber Management for the TeraFrame™ Family of Cabinets



Q. How many CPI Fiber Management components are available for the TeraFrame Family of Cabinets?

A. Seven components are available. There are five main support components: the Fiber Trunk Cable Manager, the Vertical Furcation Bracket, the Horizontal Furcation Bracket, the Universal Accessory Rail and the Fiber Module Bracket. There are two accessory brackets that attach to the Universal Accessory Rail: the Fiber Module Adapter and Swivel Cable Spool.

Q. Which components attach to the N-Series TeraFrame™ Network Cabinet?

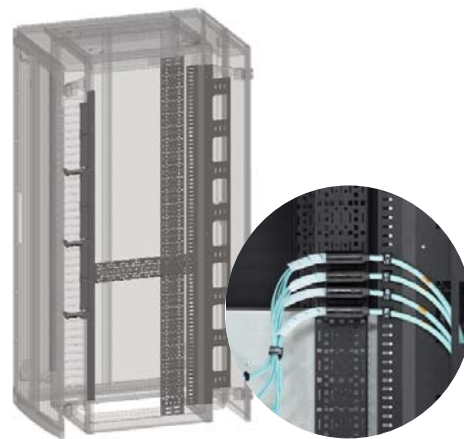
A. All components except the Fiber Module Bracket can be used in the N-Series TeraFrame™ Network Cabinet.

Q. Which components attach to the F-Series TeraFrame™ Cabinet?

A. The Fiber Module Bracket, the Vertical Furcation Bracket and the Horizontal Furcation Bracket will attach to the F-Series TeraFrame™ Cabinet.

Q. What is the typical CPI Fiber Management configuration for a Cisco MDS 9500 Series Director?

A. Cisco MDS 9500 Series Directors provide high-density Fibre Channel SAN connectivity with up to eleven horizontal interconnect modules that support port densities up to 48-ports per RMU. Cisco MDS 9500 Directors cable from the right side and require right-to-left side airflow. The CPI Fiber Management solution must guide cables into the director from the right side.



- Use an N-Series TeraFrame Network Cabinet with a Network Switch Exhaust Duct to support the Cisco MDS 9500 Series Director. The Network Switch Exhaust Duct is an internal duct located on the left side of the cabinet that guides hot exhaust air from the left side of the switch to the rear door. Use CPI part number NF2K-113C-C42 for one or two Cisco MDS 9509 Series Directors. Use CPI part number NF3K-113C-C42 for one or two Cisco MDS 9513 Series Directors.
- Include one Fiber Trunk Cable Manager (CPI part number 34719-C05) at the back on the right side of the cabinet to support the Corning Cable Systems trunk cables in the 0 RMU space between the equipment space and the side panel. Secure trunk cables to the Fiber Trunk Cable Manager to provide strain relief for vertical-to-horizontal transitions.
- Include one Vertical Furcation Bracket (CPI part number 34707-C05) near the Fiber Trunk Cable Manager on the right side of the cabinet to provide attachment points for the furcation plugs on the Corning Cable Systems trunk cables. Position the Vertical Furcation Bracket and the trunk cables so that the air intakes on the right side of the director chassis are not blocked.



CHATSWORTH PRODUCTS, INC.

800-834-4969

techsupport@chatsworth.com
www.chatsworth.com

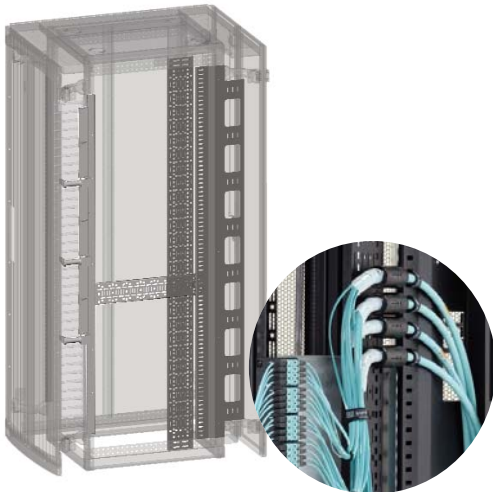
Frequently Asked Questions

CPI Fiber Management for the TeraFrame™ Family of Cabinets

- Include a Universal Accessory Rail (CPI part number 34701-C05) at the front on the right side of the cabinet to support Corning Cable Systems high-density MTP adapter panels in the 0 RMU space between equipment and the side panel.
- Include three or more Swivel Cable Spools (CPI part number 34716-C01) per director at the front on the right side of the cabinet. Attach the Swivel Cable Spools to the Universal Accessory Rail in between the Corning Cable Systems high-density MTP adapter panels to help manage the MTP-to-LC harness cable assemblies that connect the MTP ports on the panels to the LC ports on the director.

Q. What is the typical Fiber Management configuration for a Brocade 48000 Series Director?

A. Brocade 48000 Directors provide high-density Fibre Channel SAN connectivity with up to eight vertical interconnect modules that support port densities up to 48-ports each. Cables enter and exit the director from the bottom right or left side of the switch and must not block the air intake on the right, front side of the switch.



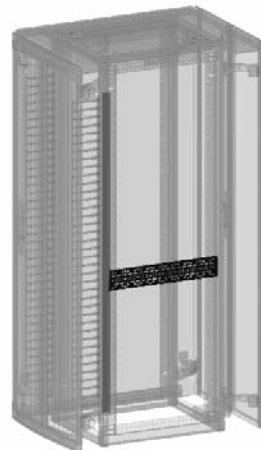
- Use an N-Series TeraFrame Network Cabinet (CPI part number NF0K-113C-C42) for one or two Brocade 48000 Directors. This cabinet does not include a Network Switch Exhaust Duct.
- Include two Fiber Trunk Cable Managers (CPI part number 34719-C05) at the rear of the cabinet on the right and left sides of the cabinet to support the Corning Cable Systems trunk cables in the 0 RMU space between the equipment space and

the side panel. Secure trunk cables to the Fiber Trunk Cable Manager to provide strain relief for vertical-to-horizontal transitions.

- Include two Vertical Furcation Brackets (CPI part number 34707-C05) near the Fiber Trunk Cable Managers on the right and left sides of the cabinet to provide attachment points for the furcation plugs on the Corning Cable Systems trunk cables.
- Include two Universal Accessory Rails (CPI part number 34701-C05) at the front of the cabinet on the right and left sides of the cabinet to support Corning Cable Systems high-density MTP adapter panels in the 0 RMU space between equipment and the side panel.
- Include six or more Swivel Cable Spools (CPI part number 34716-C02) per director; three on the right side and three on the left side at the front of the cabinet. Attach the Swivel Cable Spools to the Universal Accessory Rail in between the Corning Cable Systems high-density MTP adapter panels to help manage the MTP-to-LC harness cable assemblies that connect the MTP ports on the panels to the LC ports on the director.

Q. What is the typical CPI Fiber Management configuration for a cross-connect cabinet?

A. Use Corning Cable Systems Pretium™ Connector Housings to create cross-connects using standard CCH modules.



- Use an N-Series TeraFrame Network Cabinet (CPI part number NF0K-113C-C42) to support the connector housings. This cabinet does not include a Network Switch Exhaust Duct.



CHATSWORTH PRODUCTS, INC.

800-834-4969

techsupport@chatsworth.com
www.chatsworth.com

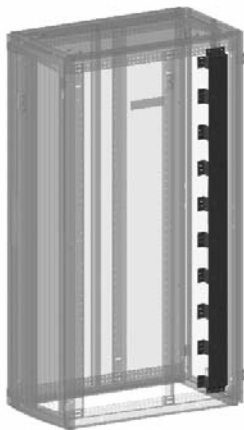
Frequently Asked Questions

CPI Fiber Management for the TeraFrame™ Family of Cabinets

- Trunk cable management can be deployed as in the Brocade Director cabinet described above by using two Fiber Trunk Cable Managers (CPI part number 34719-C05) and two Vertical Furcation Brackets (CPI part number 34707-C05). Alternately, trunk cable management can be provided by two or more Horizontal Furcation Brackets (CPI part number 34708-C09) on the right and left sides of the cabinet to provide tie points for trunk cables and/or attachment points for the furcation plugs on the Corning Cable Systems trunk cables.
- Include two Universal Accessory Rails (CPI part number 34701-C05) at the front on the right and left sides of the cabinet to support Swivel Cable Spools.
- Include six Swivel Cable Spools (CPI part number 34716-C02) per side to help manage jumper cables.

Q. What is the typical CPI Fiber Management configuration for a server or data storage cabinet?

A. Use Corning Cable Systems standard CCH modules mounted at the back of the cabinet in the 0 RMU space between the equipment mounting space and the side panel to provide connections for equipment in server and data storage cabinets.



- Use an appropriately sized F-Series TeraFrame Cabinet to support servers and data storage equipment.
- Include one Fiber Module Bracket (CPI part number 34718-Cxx) per cabinet on the right or left side at the rear of the cabinet to support several Corning Cable Systems standard CCH modules in the 0 RMU space between the equipment space and the side panel. The Fiber Module Bracket also has

tie points for trunk cables and a trough for managing jumper cables that connect to equipment.

Q. Do you need a Fiber Module Adapter to attach a Corning Cable Systems high-density MTP adapter panel to the Universal Accessory Rail?

A. No, the Corning Cable Systems high-density MTP adapter panel has an integrated mounting bracket that attaches directly to the Universal Accessory Rail. The Fiber Module Adapter is used to attach lower-density standard CCH modules to the Universal Adapter Rail.

Q. Does the Universal Accessory Rail have a mounting location next to every RMU in the cabinet?

A. No, the Universal Accessory Rail is shorter than the equipment mounting rail and does not cover the top 3 RMU and the bottom 3 RMU in the cabinet. These spaces are occupied by the cast standoffs that support the door and side panel.

Q. Can the Horizontal Furcation Bracket be used with Vertical Furcation Brackets?

A. Yes, the brackets can be used together to form different support structures for cables. The Horizontal Furcation Bracket must have two points of support located at or near the front and rear of the bracket and can be attached to equipment mounting rails, Vertical Furcation Brackets and/or a Universal Accessory Rail.

Q. Which Horizontal Furcation Bracket should I use?

A. The Horizontal Furcation Bracket fits in the 0 RMU space at the side of the cabinet. The length of the Horizontal Furcation Bracket must be less than the maximum allowable rail spacing for the cabinet. Shorter brackets can be used as long as there is a front and rear support. The bracket should not be used with the Fiber Trunk Cable Manager or the Fiber Module Bracket because the manager and bracket occupy the same area on the side of the cabinet.



CHATSWORTH PRODUCTS, INC.

All products quoted are subject to availability based on manufacturing capacity and shipping dates should be considered estimates only. While every effort has been made to ensure the accuracy of all information, CPI does not accept liability for any errors or omissions and reserves the right to change information and descriptions of listed services and products.

©2007 Chatsworth Products, Inc. All rights reserved. CPI, Saf-T-Grip, Seismic Frame, SlimFrame and MegaFrame are federally registered trademarks of Chatsworth Products, Inc. CPI Passive Cooling, Cube-IT Plus, EasySwing, FastTrac, Multi-Mount, Structured Termination Systems, TeraFrame, ThinLine, QuadraRack and Universal Rack are trademarks of Chatsworth Products, Inc. All other trademarks belong to their respective companies. MKT-60020-388 Rev.2 04/08