

# BICSI & ANSI/EIA/TIA Bonding Busbars

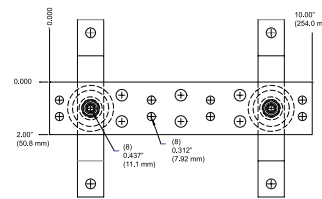
The CPI 13622 series Secondary Bonding Busbar (SBB) provides a central bond attachment point for ICT systems located in the data room. The CPI 40153 series ICT Primary Bonding Busbar (PBB) provides a central bond attachment point for ICT bonding backbones, equipment and the building's ground electrode system. All CPI Bonding Busbars are UL Listed.

Hole patterns on Busbars accommodate two-hole lugs per the recommendation of ANSI/BICSI N3-20 and ANSI/TIA-607 standards. Insulators electrically isolate Busbars from the wall or other mounting surfaces, thereby controlling the current path.

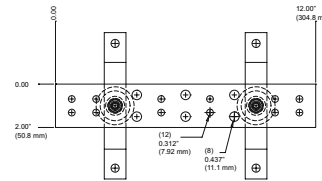
- Mounting brackets are manufactured from high-quality 300 series stainless steel with 3/8" (9.53 mm) diameter mounting holes spaced 5.75" (146.1 mm) apart
- Busbars mount on the wall, floor or ceiling
- Ships preassembled
- Sold individually
- UL Listed, File E236184, Category KDER (US), KDER7 (Canada)
- Busbar assemblies with lug kits also available
- Other configurations available on request

**Each Busbar consists of:**

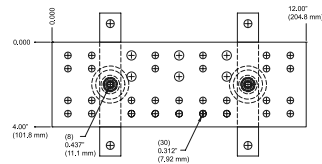
- (1) Busbar
- (2) insulators
- (2) stand-off brackets
- (4) stainless steel bolts with Torx T-45 head
- Order installation hardware separately



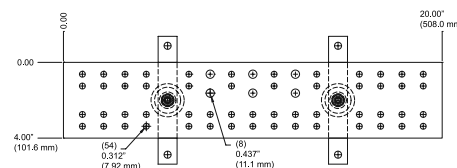
13622-010: (4) Lugs, 5/8" (15.88 mm) hole centers  
(3) Lugs, 1" (25.4 mm) hole centers



13622-012: (6) Lugs, 5/8" (15.88 mm) hole centers  
(3) Lugs, 1" (25.4 mm) hole centers



40153-012: (15) Lugs, 5/8" (15.88 mm) hole centers  
(3) Lugs, 1" (25.4 mm) hole centers



40153-020: (27) Lugs, 5/8" (15.88 mm) hole centers  
(3) Lugs, 1" (25.4 mm) hole centers

**ORDERING INFORMATION**

Part Number	Description in (mm)	Busbar Size H x W x D in (mm)	Shipping Weight lb (kg)
13622-010	10 (250) SBB	2 x 10 x 1/4 (50 x 250 x 6.4)	3 (1.4)
13622-012	12 (300) SBB	2 x 12 x 1/4 (50 x 300 x 6.4)	4 (1.8)
40153-012	12 (300) PBB	4 x 12 x 1/4 (100 x 300 x 6.4)	7 (3.2)
40153-020	20 (510) PBB	4 x 20 x 1/4 (100 x 510 x 6.4)	8 (3.6)

Note: See details in the above drawings for lug sizes and quantities. Overall height with stand-off brackets is 6.63" (168 mm); overall depth is 3.13" (80 mm). Busbars are 1/4" (6.4 mm) thick.

**United States**

Agoura Hills, CA  
800-834-4969

**Canada**

Toronto, Ontario, Canada  
+905-850-7770

**Europe**

Buckinghamshire, UK  
+441628524834

**Middle East & Africa**

Dubai, UAE  
+971-4-2602125

Doha, Qatar  
+974-4-267422

**Latin America**

+52-55-5203-7525  
Toll Free within Mexico  
800-201-7592  
chatsworth.com.co

**Asia Pacific**

+86 21 6880-0266  
chatsworth.com.cn



CHATSWORTH PRODUCTS