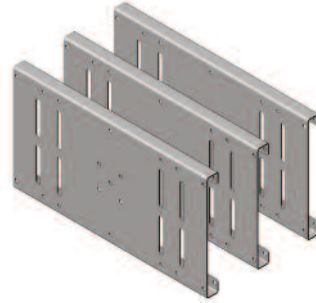


Product Cut Sheet

Fixed Accessory Panel Kit for Evolution® Cable Manager

Kit includes three additional fixed accessory panels for Evolution g1 Single-Sided Vertical Cable Manager.

- Select to match the width of the cable manager
- Includes installation hardware



Part Number	Description	Shipping Weight
35492-X01	For 6"W (150 mm) Evolution g1 Single-Sided Vertical Cable Manager	3 lb (1.4 kg)
35492-X02	For 8"W (200 mm) Evolution g1 Single-Sided Vertical Cable Manager	4 lb (1.8 kg)
35492-X03	For 10"W (250 mm) Evolution g1 Single-Sided Vertical Cable Manager	5 lb (2.3 kg)
35492-X04	For 12"W (300 mm) Evolution g1 Single-Sided Vertical Cable Manager	6 lb (2.7 kg)
35492-X05	For 15"W (380 mm) Evolution g1 Single-Sided Vertical Cable Manager	7 lb (3.2 kg)

X=Color: 7=Black, E=Glacier White.

800-834-4969 in U.S. & Canada • www.chatsworth.com



CHATSWORTH PRODUCTS

©2013 Chatsworth Products, Inc. All rights reserved. CPI, CPI Passive Cooling, GlobalFrame, MegaFrame, Saf-T-Grip, Seismic Frame, SlimFrame, TeraFrame, Cube-IT Plus, Evolution, OnTrac, Velocity and QuadraRack are federally registered trademarks of Chatsworth Products. eConnect and Simply Efficient are trademarks of Chatsworth Products. All other trademarks belong to their respective companies. Rev.2 07/13