

Product Information Sheet

PATCH PANEL ENCLOSURES FOR 2" D (50 mm) RAISED ACCESS FLOORS



TELECOMMUNICATION ENCLOSURES

The A0222-RF is a consolidation point enclosure suitable for use in air handling spaces under 2" deep (50 mm) raised floors. A0222-RF is supported directly on the sub floor and uses the 2' x 2' raised floor tile as a lid.

A0222-RF has four edge-protected cable access ports that include fire rated foam sealing kits. Patch panels are supported by matching pairs of 19" wide by 1U high mounting rails (2U total) that pivot to provide easy access to the front and rear.

■ Cable Entry/Exit

- (4) 6"W x 3/4"H (152 mm x 19 mm) edge-protected cable access ports
- Includes approved fire-rated foam sealing kits

■ Equipment Support

- 2U divided 1U-1U for 19" patch panels.
- Mounting rails pivot to provide easy access to the rear of equipment.

■ Materials

- Enclosure: .060" thick (1.52 mm) sheet aluminum, riveted construction
- Foam Sealing Kit: Polychloroprene latex compound

■ Packaging

- 1 Enclosure/Carton

■ Approvals

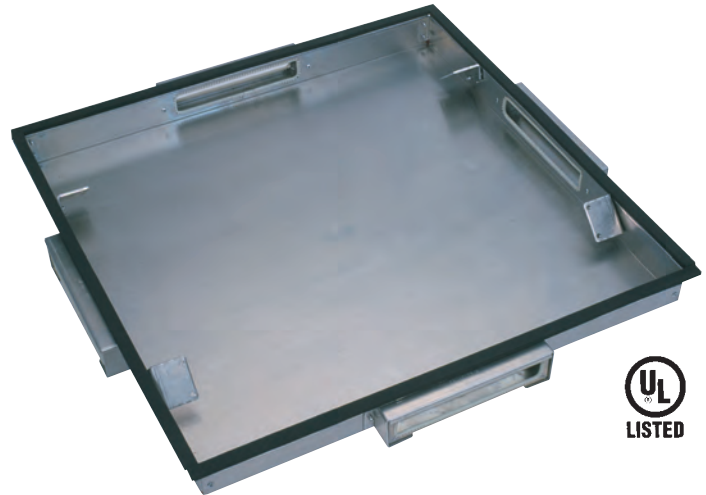
- UL Listed - Communications Circuit Accessory
- UL File Number/E185147 (UL 1863; UL 50; UL 2043)

■ Specifications

- Enclosure: 25-1/2"W x 25-1/2"L x 1-3/4" D (647 mm x 647 mm x 44 mm)
- Weight: 7 lb

■ Installation

- Use #12-24 equipment mounting screws to attach patch panels (P/N 40605-001).
- Use Saf-T-Grip Cable Management Straps to manage cables (P/N 02006-201).
- Use A0422-RF if the floor is higher than 2" deep (50 mm).



Part Number	Description	Shipping Weight
A0222-RF	1U + 1U Enclosure for 2" Deep (50 mm) Floor	10 lb (4.5 kg)

800-834-4969 US & Canada • www.chatsworth.com



CHATSWORTH PRODUCTS, INC.

©2009 Chatsworth Products, Inc. All rights reserved. CPI, CPI Passive Cooling, Saf-T-Grip, Seismic Frame, SlimFrame and MegaFrame are federally registered trademarks of Chatsworth Products, Inc. Cube-iT Plus, Evolution, OnTrac, QuadraRack, Simply Efficient and TeraFrame are trademarks of Chatsworth Products, Inc. All other trademarks belong to their respective companies. Rev.2 03/09