



CHATSWORTH
PRODUCTS

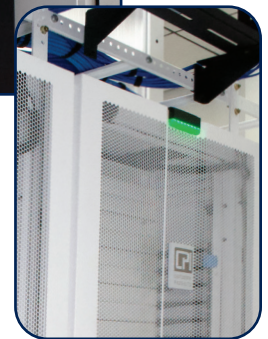
eConnect® Sensor Array

The eConnect® Environmental Monitoring Sensor portfolio provides a fully integrated system for cabinet-level monitoring across data centers, edge sites, and distributed IT environments. Built around modular Sensor Hubs and compatible sensors, the system enables temperature and humidity monitoring, leak detection, door-status sensing, cabinet lighting, and electronic access control while connecting directly to eConnect PDUs or a Network Controller Module for simplified power and network integration.

Together, the hubs and sensors form the eConnect Sensor Array, which consolidates cabinet-level management under a single network connection, one user interface, and one user database to streamline deployment and reduce complexity. The array connects to the eConnect PDU AUX ports and can receive redundant power from a second eConnect PDU.



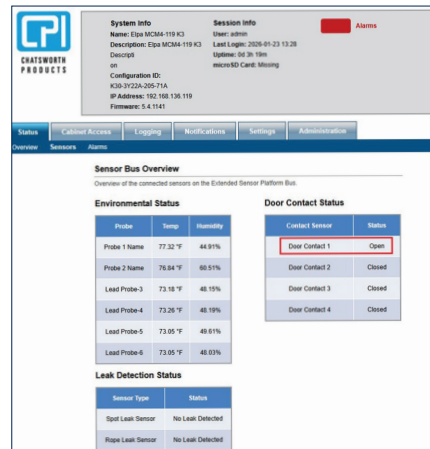
Above: eConnect Sensor Array installed in a CPI ZetaFrame® Cabinet System.



Right: Cabinet Status light with eConnect Secure Array Door Sensor installed.

KEY FEATURES

- **Comprehensive Environmental Visibility** – Monitor temperature, humidity, leaks, door status, and access events at the cabinet level to detect issues early and support uptime.
- **Modular, Scalable Architecture** – Four specialized Sensor Hubs with plug-and-play sensors allow you to expand capabilities as environmental, security, or compliance needs grow.
- **Simplified Deployment & Integration** – Native compatibility with eConnect PDUs and magnetic mounting within CPI Zetaframe Cabinets ensures a unified monitoring ecosystem with reduced installation complexity
- **Enhanced Security & Access Management** – Electronic lock support, audit-ready logging, and door contact monitoring help safeguard sensitive equipment in regulated or distributed environments.
- **Improved Service Efficiency** – Integrated cabinet lights and status indicators provide technicians with instant visibility during maintenance, reducing errors and on-site time.



Connect Web UI showing the sensor status

Availability: Global

United States & Canada
Simi Valley, CA
800-834-4969
Toronto, Ontario, Canada
+905-850-7770
chatsworth.com
techsupport@chatsworth.com

Latin America
Mexico City, Mexico
+52-55-5203-7525
Toll Free within Mexico
800-201-7592
chatsworth.com.co

Europe
Buckinghamshire
England, UK
+44-1628-524-834

Middle East & Africa
Dubai, UAE
+971-4-2602125

Asia Pacific
Jing'an District,
Shanghai, China
+86 21 6880-0266
chatsworth.com.cn



ORDERING INFORMATION:

eConnect® Sensor Hub – Temp & Humidity

Provides accurate cabinet-level temperature and humidity monitoring with support for multiple sensor types. Designed for proactive thermal management and integration with DCIM platforms.

- Supports up to four temperature/humidity sensors
- Connects via PDU AUX port
- Daisy-chain capable
- Compatible with DCIM monitoring dashboards and alerts
- LED status indicators for connection and activity

Specifications - eConnect Temp & Humidity Sensor

Description:	Temp / Humidity Sensor (15013-701)
Relative Humidity Range:	RH Range is 0-100%
Relative Humidity Accuracy:	+/-3% RH
Relative Humidity Resolution:	.024% RH
Normal Operating Humidity Range:	0-80% RH
Temperature Accuracy:	+/- 0.5%
Temperature Resolution:	01°C
Operating Temperature Range:	-40°C to 80°C
Communication Protocol :	I2C
Mounting Method:	Magnetic Mounting
Cable Length:	15 ft. (4.5m)

eConnect® Sensor Hub – Temp & Humidity Monitoring		
Part Number	Description	Shipping Weight lb (kg)
15013-701	eConnect® Sensor Hub – Temp & Humidity	1 (0.5)
14980-701	Temp & Humidity Sensor , 15'L (4.5m), compatible with Sensor Hub, (Qty. 1)	1 (0.5)



15013-701
Sensor Hub
Temp & Humidity



14980-701
Temp & Humidity
Sensor



Sensor Installed in
ZetaFrame Cabinet

eConnect® Sensor Hub – Leak Detection

Supports multiple water and dielectric leak-detection sensors to identify moisture intrusion or leaks before they cause equipment damage.

- Compatible with spot and rope leak-detection sensors
- Supports up to 1 Spot sensor and 1 Rope sensor
- Supports early-warning alarms and DCIM notifications
- Daisy-chain ready for expanded coverage
- Low-profile connectors for clean routing

Specifications - eConnect Leak Detection Sensor

Description:	Spot Sensor (Dielectric/15015-701)
Operating Temperature Range:	-10° to 60°C
Operating Humidity Range:	35 – 85 %RH (No condensation)
Storage Temp:	-20 – 70 (Atmospheric pressure, humidity 65% RH Maximum)
Pressure Medium:	Water (PP) / Corrosive fluids compatible with PFA
Material of Housing:	PP/PFA
Operation Grade:	<ul style="list-style-type: none"> • Normal condition: Switch output is ON/Green LED is ON • Leakage detection:: Switch output is OFF/RED LED is ON
Cable Length:	13' ft (4m)

Description:	Spot Sensor Water (14983-701)
Operating Temperature Range:	10°C to 65°C
Mounting Method:	Magnetic Mounting
Cable Length:	13' ft (4m)

Description:	Rope Sensor (15024-005)
Ambient Operating Temperature:	-10 to 55°C
Ambient Humidity:	45% to 85%
Mounting Method:	Magnetic Mounting
Cable Length:	16' ft (5m)

eConnect® Sensor Hub – Leak Detection		
Part Number	Description	Shipping Weight lb (kg)
15015-701	eConnect® Sensor Hub – Leak Detection	1 (0.5)
14983-701	Leak Detector (water only) Spot Sensor	1 (0.5)
14995-701	Leak Detector (di-electric) Spot Sensor	1 (0.5)
15024-005	Leak Detector Rope Sensor (water only)	1 (0.5)



15015-701
Sensor Hub
Leak Detection



14995-701
Leak Detector
Spot Sensor
(Dielectric)



Sensor Installed in
ZetaFrame Cabinet



14983-701
Leak Detector
Spot Sensor
(Water)



15024-005
Leak Detector
Rope Sensor (Water Only)

ORDERING INFORMATION

eConnect® Sensor Hub – Door, Lights & Access

Provides door-status monitoring, cabinet-level status lighting, and automatic work-light activation. Ideal for improving technician visibility and enhancing operational awareness.

- Supports top-mounted cabinet status lights
- Integrates with PDU-based monitoring for unified alerts
- Provides daisy-chain capability

Specifications - Door Sensor, Light

Description:	Door Sensor (15014-701)
Operating Temperature Range:	-40°C to 105°C
Mounting Method:	Magnetic Mounting
Cable Length:	10' ft (3m)

Description:	Cabinet Work Light (14994-701)
Input Voltage Range:	Power Supply : 120 - 240V
Input Current Range:	Power Consumption : 25W
Mounting Method:	Magnetic Mounting
Input Plugs Included	Input Connector Power Supply - IEC 320 C14
Cable Length:	10' (3m)

Description:	Cabinet Status Light (15016-001)
Use:	Reflects current PDU status of PDU in sensor array - Critical Alarm – RED, Warning – AMBER, No Alarm – GREEN)
Mounting Method:	Magnetic Mounting
Cable Length:	10' ft (3m)

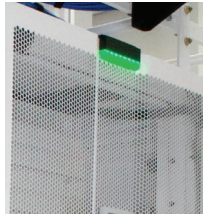
eConnect Sensor Hub - Door, Lights & Access		
Part Number	Description	Shipping Weight lb (kg)
15014-701	eConnect® Sensor Hub – Door, Lights & Access	1 (0.5)
14978-701	Door Control Sensor For ZetaFrame Cabinets	1 (0.5)
15016-001	Cabinet Status Lights	1 (0.5)
14994-701	Cabinet Work Light	1 (0.5)



15014-701
Sensor Hub, Door,
Lights & Access



14978-701
Door Control
Sensor



15016-001
Cabinet Status
Lights



14994-701
Cabinet Work
Light



Cabinet Work
Light and Sensors
installed in Cabinet

eConnect® Sensor Hub – Access Control

Enables electronic access control at the cabinet level with support for RFID verification, audit logs, and DCIM integration.

- Interfaces directly with CPI's electronic lock kit
- Provides audit-ready logging of all access attempts
- Remote unlock capability when used with DCIM
- Redundant power via dual PDUs
- Mounts cleanly within cabinet interior

Specifications - Electronic Lock Access Control

Description:	Access Control (15026-701)
Swinghandle:	Fits standard 5.9"H x 1"W (150 mm x 25 mm) cutout
RFID Card Reader:	Modular design is integrated with swinghandle; attaches to top of handle
Supported Cards:	Dual Frequency: 125kHz CSN and 13.56MHz UID RFID cards with 4,7 or 8 bytes • 125kHz HID Proximity • iClass / iClass SE 13.65 MHz • MiFare UltraLight / DesFire EV1/ Classic /Plus X
Local Management	Bicolor LED display providing card reader status
Material & Finish	Glass-filled Nylon, PC/ABS (UL94-V0)
Operating Conditions:	• Temperature: 32 F - 149 F (0C - 65 C) • Relative Humidity: 5 - 95% non-condensing

eConnect Sensor Hub – Access Control		
Part Number	Description	Shipping Weight lb (kg)
15026-701	eConnect® Sensor Hub – Access	1 (0.5)
15027-001	eConnect RFID Electronic Lock Kit Includes Sensor Hub - Access, Front & Rear Door locks & RFID readers, 3 Door contact sensors	2 (0.9)
15028-001	Networked RFID Electronic Lock Kit (used when Sensor Array is not connected to an eConnect PDU) - Includes Networked Control Module, Sensor Hub-Access, Front & Rear door locks and RFID readers and 3 Door contact sensors)	2 (0.9)
36654-001	RFID Cards, Pack of 20	1 (0.5)
36653-001	RFID IDEas Card Reader	1 (0.5)
Part Number	Description	Shipping Weight lb (kg)
15031-001	eConnect® Network Controller Module	1 (0.5)



15026-701
Sensor Hub
Access



15027-001
eConnect RFID
Electronic Lock Kit



15028-001
Networked RFID
Electronic Lock Kit



15031-001
Controller Module

chatsworth.com

techsupport@chatsworth.com

800-834-4969



While every effort has been made to ensure the accuracy of all information, CPI does not accept liability for any errors or omissions and reserves the right to change information and descriptions of listed services and products.
©2026 Chatsworth Products, Inc. All rights reserved. Chatsworth Products, Clik-Nut, CPI, CPI Passive Cooling, CUBE-IT, Secure Array, eConnect, Evolution, GlobalFrame, MegaFrame, QuadraRack, RMR, Saf-T-Grip, SeismicFrame, SlimFrame, TeraFrame, Motive, Velocity, Oberon, WI-Tile and ZetaFrame are federally registered trademarks of Chatsworth Products. EuroFrame, H-Plane, HI-Bar, In-Plane, IM-Frame, NetPoint, Simply Efficient, Skybar, Elevate, and VersaEdge Wall-Mount Cabinet are trademarks of Chatsworth Products and Oberon, a division of Chatsworth Products. All other trademarks belong to their respective companies. Rev. 02/2026 MKT-CPI-860