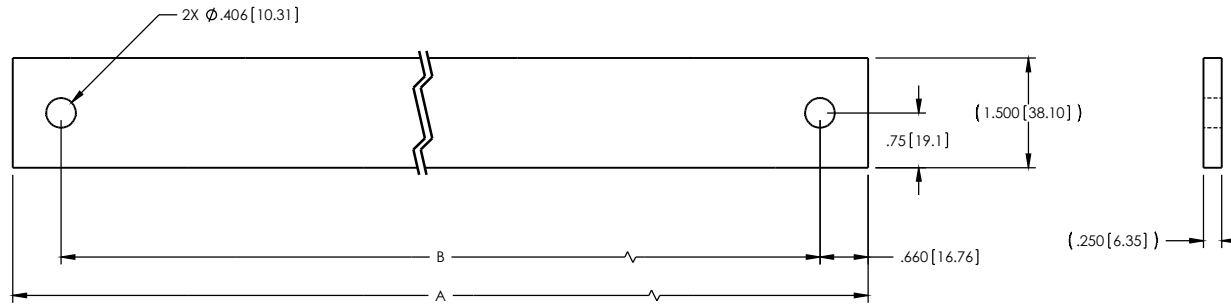


THIS DRAWING CONTAINS PROPRIETARY AND CONFIDENTIAL INFORMATION AND IS PROTECTED BY U.S. AND INTERNATIONAL LAW. UNAUTHORIZED REPRODUCTION, DISCLOSURE OR USE OF THE DRAWING OR THE INFORMATION THEREIN IS EXPRESSLY FORBIDDEN EXCEPT AS AGREED TO IN WRITING BY CHATSWORTH PRODUCTS, INC.

CONFIDENTIAL AND PROPRIETARY

REVISION				
ISS	DESCRIPTION	DATE	APPROVED	
			CHK	ENG
2	PDM_ECO_C-3966	JBE 09/21/2011	JEN 09/29/2011	JBE 04/15/2011



-X03	26.25 [666.8]	24.930 [633.2]
-X02	24.25 [616.0]	22.930 [582.4]
-X01	20.25 [514.4]	18.930 [480.8]
DASH NO.	DIM "A"	DIM "B"

1. REMOVE BURRS AND BREAK SHARP EDGES.  
NOTES: UNLESS OTHERWISE SPECIFIED

UNLESS OTHERWISE SPECIFIED ALL DIMENSIONS SHOWN ARE IN INCHES [MILLIMETERS] MILLIMETERS ARE REFERENCE ONLY SPECIFIED TOLERANCES ON: .XX[X] ±.00[X] ANGLE ±.02[±.5] ±.010[±.25] ±.1° THIRD ANGLE	APPROVALS	DATE	CHATSWORTH PRODUCTS, INC.  <b>TOP BAR UNIVERSAL RACK</b>
	DR:	04/15/2011	
	CHGR:		
	MECH ENG:		
ITEM TO CONFORM TO SPEC-754002 CORPORATE COSMETIC SPEC.	ELEC ENG:		
<b>MATERIAL</b> 4061-T6, 1/4 x 1-1/2 BAR-RC,AL 004-919004-011	<b>FINISH</b> POWDER COAT PAINT PER 0FC-754000	DRW. SIZE <b>C</b>	<b>020-713045</b>
SCALE 1:1		SHEET 1 OF 1	ISS <b>2</b>