

Product Information Sheet

MINI WIRELESS WALL ENCLOSURE



Telecommunication Enclosures

The AAT-MWME-P is a wall mounted enclosure for wireless transmitters designed for warehouse, manufacturing/light industrial and exterior use. AAT-MWME-P is constructed of rugged dust and weather-resistant fiberglass reinforced polyester. A single front door provides access to equipment. The door is attached with a continuous steel hinge and secured by padlock through two stainless steel padlock hasps. A gasket seals the interior at closure.

AAT-MWME-P measures 11-1/2" high by 9-1/2" wide by 4-1/2" deep. It includes a removable interior back plate pre-drilled for a variety of wireless transmitters (listed below). AAT-MWME-P is UL Listed and NEMA rated for indoor/outdoor use. No fire-foam seal kit is supplied. AAT-MWME-P is a completely sealed enclosure. The customer must provide and install cable access and installation hardware to fit the application.

■ Cable Entry/Exit

- Enclosure is completely sealed, customer drills holes to fit application

■ Equipment Support

- Removable interior back plate pre-drilled for wireless transmitters listed a right
- Secure enclosure with (2) padlocks, 3/8" maximum shackle diameter, not included

■ Materials

- Enclosure: fiberglass reinforced polyester
- Back plate: acrylic plastic
- Hinge & Padlock Hasps: stainless steel

■ Packaging

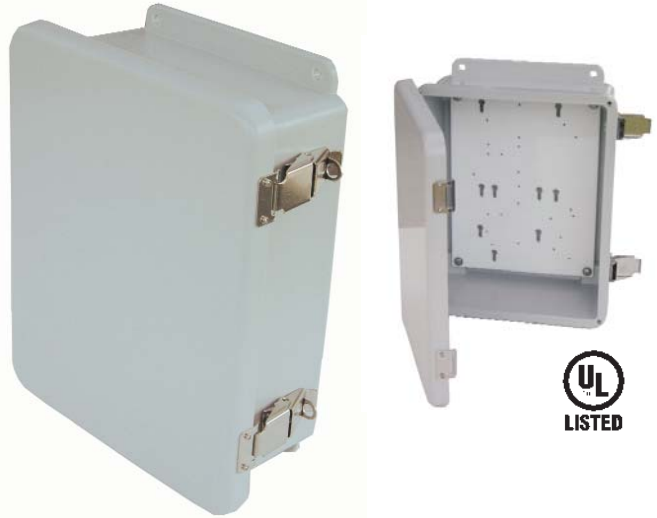
- 1 Enclosure/Carton

■ Approvals

- UL Listed - for use with industrial equipment in ordinary locations
- NEMA 1, 3R, 4X, 6P and 12

■ Specifications

- Enclosure: 11-1/2"H x 9-1/2"W x 4-1/2"D
- Product Weight: 5 lb



Part Number	Description	Shipping Weight
AAT-MWME-P	Wall-Mount Wireless Box	6 lb

■ Accommodates

- Interior of the enclosure is 3" deep
- Maximum equipment size is 9" x 7" x 3"
- Back plate measures 8-7/8"L x 6-7/8"W and is pre-drilled for the following wireless transmitters:

-Cisco / Aironet 350 Rugged
-Proxim Harmony
-Proxim Skyline

- Other wireless transmitters may fit — customer drilling of back plate may be required

■ Installation

- Customer must provide installation and cable access hardware

800-834-4969 U.S. & Canada • www.chatsworth.com



CHATSWORTH PRODUCTS, INC.

©2004 Chatsworth Products, Inc. All rights reserved. CPI is a registered trademark of Chatsworth Products, Inc. All other trademarks belong to their respective companies 04/04