

Product Cut Sheet

N-SERIES TERAFRAME® GEN 3 NETWORK CABINET SYSTEM SERVICE PARTS

Service Parts

This document lists service parts for the N-Series TeraFrame® Gen 3 Network Cabinet System. Service parts include mounting rails, air managers, top panels, side panels, doors and door lock kits and are used as replacement parts or to upgrade cabinets as applications change.

To identify the correct size component, locate the product part number on the label on the bottom front corner of the cabinet frame, or take overall measurements of the cabinet frame. Please contact CPI Technical Support at 800-834-4969 or techsupport@chatsworth.com for assistance.

TeraFrame-Style Front Door and Lock Kits

Stylish perforated design, with contrasting aluminum center feature, provides security and airflow for rack-mount equipment in the cabinet.

Key Features:

- Standard front door on F-Series TeraFrame® Gen 3 Cabinets
- Single door on 31.5"W (800 mm) cabinet
- Double door on 40.0"W (1016 mm) cabinet
- 78% open in perforated area for excellent airflow
- Universal mounting location allows use on the front or rear of the cabinet
- Single-door can be attached to the cabinet to swing open to the left or right
- Opens 120° when cabinets are bayed; 130° when stand alone
- Hinge pins allow quick and easy tool-less removal of the door for maintenance access
- Choice of lock kit with swing handle, keyed or combination/keyed lock and two-point latch for security (ordered separately)

Specifications:

- Includes: Door, hinges, installation hardware (order lock kit separately, see tables)
- Material: Steel sheet and aluminum extrusion
- Finish: Black or Glacier White

Ordering:

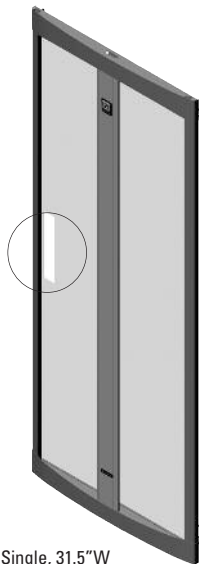
- Select part number to match the width, usable height and color of the cabinet
- Select the door lock kit separately, there are two styles of lock to choose from:
 - Keyed lock
 - Combination and keyed lock has three 10-digit dials (1000 possible combinations) on the handle and a master key

TeraFrame-Style Single Perforated Front Door for 31.5"W (800 mm) N-Series TeraFrame Gen 3 Cabinets		
Part Number	Description Height (U)	Shipping Weight lb (kg)
31.5"W (800 mm)		
39060-X22	42	33 (15.0)
39060-X23	43	34 (15.4)
39060-X24	44	34 (15.4)
39060-X25	45	35 (15.9)
39060-X26	46	36 (16.3)
39060-X27	47	36 (16.3)
39060-X28	48	37 (16.8)
39060-X29	49	38 (17.2)
39060-X30	50	38 (17.2)
39060-X31	51	39 (17.7)
39060-X32	52	40 (18.1)

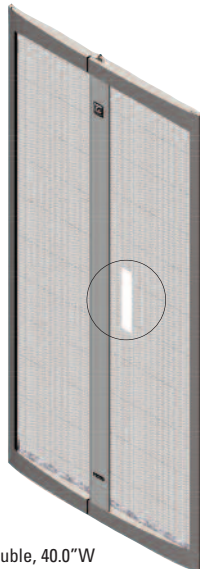
X=color: C=Black, E=Glacier White.

TeraFrame-Style Double Perforated Front Door for 40.0"W (1016 mm) N-Series TeraFrame Gen 3 Cabinets		
Part Number	Description Height (U)	Shipping Weight lb (kg)
40.0"W (1016 mm)		
39360-X00	42	68 (30.8)
39360-X01	43	69 (31.3)
39360-X02	44	70 (31.8)
39360-X03	45	73 (33.1)
39360-X04	46	74 (33.6)
39360-X05	47	75 (34.0)
39360-X06	48	76 (34.5)
39360-X07	49	78 (35.4)
39360-X08	50	79 (35.8)
39360-X09	51	80 (36.3)
39360-X10	52	81 (36.7)

X=color: C=Black, E=Glacier White.



Single, 31.5"W



Double, 40.0"W

See next page for lock kits.

800-834-4969 in U.S. & Canada • www.chatsworth.com



CHATSWORTH PRODUCTS

+1-800-834-4969

techsupport@chatsworth.com
www.chatsworth.com

Product Cut Sheet

N-SERIES TERAFRAME® GEN 3 NETWORK CABINET SYSTEM SERVICE PARTS

TeraFrame-Style Front Door Lock Kits

Lock Kit for TeraFrame-Style Single Perforated Front Door for 31.5" W (800 mm) N-Series TeraFrame Gen 3 Cabinets				
Part Number		Latch Type	Description Door Height (U)	Shipping Weight lb (kg)
Keyed	Combination and Keyed			
39064-C00	39065-C00	Two-Point	42	6 (2.7)
39064-C01	39065-C01	Two-Point	43	6 (2.7)
39064-C02	39065-C02	Two-Point	44	6 (2.7)
39064-C03	39065-C03	Two-Point	45	6 (2.7)
39064-C04	39065-C04	Two-Point	46	6 (2.7)
39064-C05	39065-C05	Two-Point	47	6 (2.7)
39064-C06	39065-C06	Two-Point	48	6 (2.7)
39064-C07	39065-C07	Two-Point	49	6 (2.7)
39064-C08	39065-C08	Two-Point	50	6 (2.7)
39064-C09	39065-C09	Two-Point	51	6 (2.7)
39064-C10	39065-C10	Two-Point	52	6 (2.7)

Color is Black. Lock Kit includes swing handle, mounting plate, latch, lock, keys and installation hardware.

Lock Kit for TeraFrame-Style Single Perforated Front Door for 40.0" W (1016 mm) N-Series TeraFrame Gen 3 Cabinets				
Part Number		Latch Type	Description Door Height (U)	Shipping Weight lb (kg)
Keyed	Combination and Keyed			
39371-C00	39373-C00	Two-Point	42	6 (2.7)
39371-C01	39373-C01	Two-Point	43	6 (2.7)
39371-C02	39373-C02	Two-Point	44	6 (2.7)
39371-C03	39373-C03	Two-Point	45	6 (2.7)
39371-C04	39373-C04	Two-Point	46	6 (2.7)
39371-C05	39373-C05	Two-Point	47	6 (2.7)
39371-C06	39373-C06	Two-Point	48	6 (2.7)
39371-C07	39373-C07	Two-Point	49	6 (2.7)
39371-C08	39373-C08	Two-Point	50	6 (2.7)
39371-C09	39373-C09	Two-Point	51	6 (2.7)
39371-C10	39373-C10	Two-Point	52	6 (2.7)

Color is Black. Lock Kit includes swing handle, mounting plate, latch, lock, keys and installation hardware.



800-834-4969 in U.S. & Canada • www.chatsworth.com



CHATSWORTH PRODUCTS

+1-800-834-4969

techsupport@chatsworth.com
www.chatsworth.com

Product Cut Sheet

N-SERIES TERAFRAME® GEN 3 NETWORK CABINET SYSTEM SERVICE PARTS

GlobalFrame-Style Front Door and Lock Kits

Perforated design provides security and airflow for rack-mount equipment in the cabinet.

Key Features:

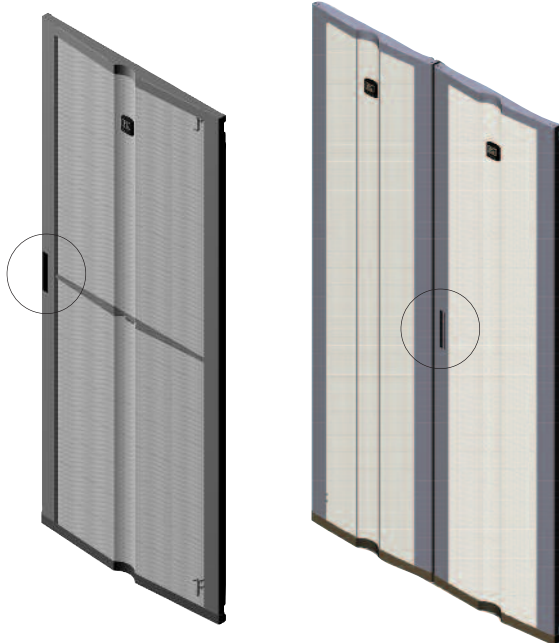
- Standard front door on GF-Series GlobalFrame® Gen 2 Cabinets
- Single door on 31.5"W (800 mm) cabinet
- Double door on 40.0"W (1016 mm) cabinet
- 78% open in perforated area for excellent airflow
- Universal mounting location allows use on the front or rear of the cabinet
- Single-door can be attached to the cabinet to swing open to the left or right
- Opens 120° when cabinets are bayed; 145° when stand alone
- Hinge pins allow quick and easy tool-less removal of the door for maintenance access
- Choice of lock kit with swing handle; keyed or combination/keyed lock and single-point or two-point latch for security (ordered separately)

Specifications:

- Includes: Door, hinges, installation hardware (order lock kit separately, see tables)
- Material: Steel
- Finish: Black or Glacier White

Ordering:

- Select part number to match the width, usable height and color of the cabinet
- Select the door lock kit separately, there are two styles of lock to choose from:
 - Keyed lock
 - Combination and keyed lock has three 10-digit dials (1000 possible combinations) on the handle and a master key



GlobalFrame-Style Single Perforated Front Door for 31.5"W (800 mm) N-Series TeraFrame Gen 3 Cabinets		
Part Number	Description	Shipping Weight
31.5"W (800 mm)	Height (U)	lb (kg)
39090-X22	42	45 (20.4)
39090-X23	43	46 (20.9)
39090-X24	44	46 (20.9)
39090-X25	45	47 (21.3)
39090-X26	46	48 (21.8)
39090-X27	47	49 (22.2)
39090-X28	48	50 (22.7)
39090-X29	49	51 (23.1)
39090-X30	50	52 (23.6)
39090-X31	51	53 (24.0)
39090-X32	52	54 (24.5)

X=color: C=Black, E=Glacier White.

GlobalFrame-Style Double Perforated Front Door for 40.0"W (1016 mm) N-Series TeraFrame Gen 3 Cabinets		
Part Number	Description	Shipping Weight
40.0"W (1016 mm)	Height (U)	lb (kg)
39420-X00	42	71 (32.2)
39420-X01	43	72 (32.7)
39420-X02	44	74 (33.6)
39420-X03	45	76 (34.5)
39420-X04	46	77 (34.9)
39420-X05	47	79 (35.8)
39420-X06	48	80 (36.3)
39420-X07	49	81 (36.7)
39420-X08	50	83 (37.6)
39420-X09	51	84 (38.1)
39420-X10	52	85 (38.6)

X=color: C=Black, E=Glacier White.

See next page for lock kits.

800-834-4969 in U.S. & Canada • www.chatsworth.com



CHATSWORTH PRODUCTS

+1-800-834-4969

techsupport@chatsworth.com
www.chatsworth.com

Product Cut Sheet

N-SERIES TERAFRAME® GEN 3 NETWORK CABINET SYSTEM SERVICE PARTS

GlobalFrame-Style Front Door Lock Kits



Lock Kit for GlobalFrame-Style Single Perforated Front Door for 31.5" W (800 mm) N-Series TeraFrame Gen 3 Cabinets				
Part Number		Latch Type	Description Door Height (U)	Shipping Weight lb (kg)
Keyed	Combination and Keyed			
39093-C00	39093-C01	Single-Point	All	3 (1.4)

Color is Black. Lock Kit includes swing handle, mounting plate, latch, lock, keys and installation hardware.



Lock Kit for GlobalFrame-Style Double Perforated Front Door for 40.0" W (1016 mm) N-Series TeraFrame Gen 3 Cabinets				
Part Number		Latch Type	Description Door Height (U)	Shipping Weight lb (kg)
Keyed	Combination and Keyed			
39428-C00	39431-C00	Two-Point	42	4 (1.8)
39428-C01	39431-C01	Two-Point	43	4 (1.8)
39428-C02	39431-C02	Two-Point	44	4 (1.8)
39428-C03	39431-C03	Two-Point	45	4 (1.8)
39428-C04	39431-C04	Two-Point	46	4 (1.8)
39428-C05	39431-C05	Two-Point	47	4 (1.8)
39428-C06	39431-C06	Two-Point	48	4 (1.8)
39428-C07	39431-C07	Two-Point	49	4 (1.8)
39428-C08	39431-C08	Two-Point	50	4 (1.8)
39428-C09	39431-C09	Two-Point	51	4 (1.8)
39428-C10	39431-C10	Two-Point	52	4 (1.8)

Color is Black. Lock Kit includes swing handle, mounting plate, latch, lock, keys and installation hardware.

800-834-4969 in U.S. & Canada • www.chatsworth.com



CHATSWORTH PRODUCTS

+1-800-834-4969

techsupport@chatsworth.com
www.chatsworth.com

Product Cut Sheet

N-SERIES TERAFRAME® GEN 3 NETWORK CABINET SYSTEM SERVICE PARTS

Solid Rear Door and Lock Kits

Solid door provides security and blocks airflow to/from rack-mount equipment in the cabinet when closed.

Key Features:

- Low profile, flat, solid metal door with perimeter seal
- Typically used as the rear door with Vertical Exhaust Duct, Bottom Panel and Air Dam, as part of the CPI Passive Cooling Solution to capture and guide hot exhaust air away from the cabinet
- Single door on 31.5"W (800 mm) cabinet
- Double door on 40.0"W (1016 mm) cabinet
- Universal mounting location allows use on the front or rear of the cabinet
- Single-door can be attached to the cabinet to swing open to the left or right
- Opens 180° when cabinets are bayed or stand alone
- Hinge pins allow quick and easy tool-less removal of the door for maintenance access
- Choice of lock kit with swing handle; keyed or combination/keyed lock and two-point latch for security (ordered separately)

Specifications:

- Includes: Door, hinges, installation hardware (order lock kit separately, see tables)
- Material: Steel Sheet
- Finish: Black or Glacier White

Ordering:

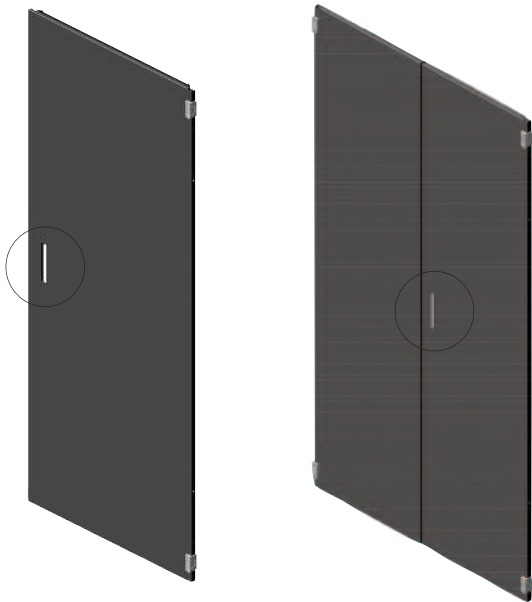
- Select part number to match the width, usable height and color of the cabinet
- Select the door lock kit separately, there are two styles of lock to choose from:
 - Keyed lock
 - Combination and keyed lock has three 10-digit dials (1000 possible combinations) on the handle and a master key

Single Solid Rear Door for 31.5"W (800 mm) N-Series TeraFrame Gen 3 Cabinets		
Part Number	Description Height (U)	Shipping Weight lb (kg)
31.5"W (800 mm)		
39070-X22	42	64 (29.0)
39070-X23	43	65 (29.5)
39070-X24	44	66 (29.9)
39070-X25	45	68 (30.8)
39070-X26	46	69 (31.3)
39070-X27	47	70 (31.8)
39070-X28	48	72 (32.7)
39070-X29	49	73 (33.1)
39070-X30	50	74 (33.6)
39070-X31	51	76 (34.5)
39070-X32	52	77 (34.9)

X=color: C=Black, E=Glacier White.

Double Solid Rear Door for 40.0"W (1016 mm) N-Series TeraFrame Gen 3 Cabinets		
Part Number	Description Height (U)	Shipping Weight lb (kg)
40.0"W (1016 mm)		
39320-X00	42	71 (32.2)
39320-X01	43	72 (32.7)
39320-X02	44	73 (33.1)
39320-X03	45	76 (34.5)
39320-X04	46	77 (34.9)
39320-X05	47	78 (35.4)
39320-X06	48	80 (36.3)
39320-X07	49	81 (36.7)
39320-X08	50	82 (37.2)
39320-X09	51	84 (38.1)
39320-X10	52	85 (38.6)

X=color: C=Black, E=Glacier White.



See next page for lock kits.

800-834-4969 in U.S. & Canada • www.chatsworth.com



CHATSWORTH PRODUCTS

+1-800-834-4969

techsupport@chatsworth.com
www.chatsworth.com

Product Cut Sheet

N-SERIES TERAFRAME® GEN 3 NETWORK CABINET SYSTEM SERVICE PARTS

Solid Rear Door Lock Kits



Lock Kit for Single Solid Rear Door N-Series TeraFrame Gen 3 Cabinets				
Part Number		Latch Type	Description Door Height (U)	Shipping Weight lb (kg)
Keyed	Combination and Keyed			
	39074-C00	Two-Point	42	4 (1.8)
	39074-C01	Two-Point	43	4 (1.8)
	39074-C02	Two-Point	44	4 (1.8)
	39074-C03	Two-Point	45	4 (1.8)
	39074-C04	Two-Point	46	5 (2.3)
	39074-C05	Two-Point	47	5 (2.3)
	39074-C06	Two-Point	48	5 (2.3)
	39074-C07	Two-Point	49	5 (2.3)
	39074-C08	Two-Point	50	5 (2.3)
	39074-C09	Two-Point	51	5 (2.3)
	39074-C10	Two-Point	52	5 (2.3)

Color is Black. Lock Kit includes swing handle, mounting plate, latch, lock, keys and installation hardware.

800-834-4969 in U.S. & Canada • www.chatsworth.com



CHATSWORTH PRODUCTS

+1-800-834-4969

techsupport@chatsworth.com
www.chatsworth.com

Product Cut Sheet

N-SERIES TERAFRAME® GEN 3 NETWORK CABINET SYSTEM SERVICE PARTS

Double Perforated Doors and Locks

Vertically split design uses minimal aisle space when opened, and provides security and airflow for rack-mount equipment in the cabinet when closed.

Key Features:

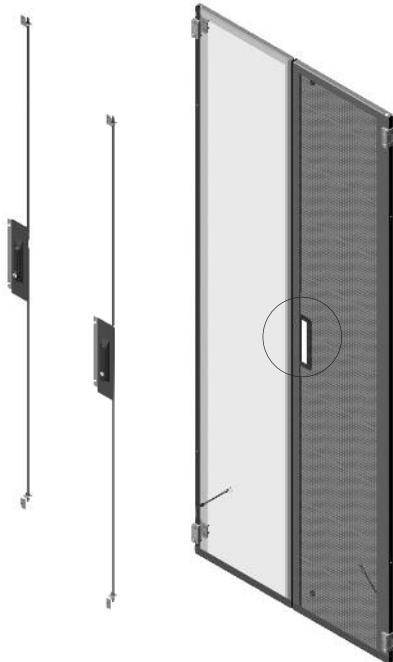
- Low profile, flat, double perforated metal door
- Typically used as the rear door in traditional hot aisle/cold aisle environments or with aisle containment for front-to-rear airflow through the cabinet
- 78% open in perforated area for excellent airflow
- Universal mounting location allows use on the front or rear of the cabinet
- Double door design uses less aisle space when opened
- Opens 180° when cabinets are bayed or stand alone
- Hinge pins allow quick and easy tool-less removal of the door for maintenance access
- Choice of lock kit with swing handle; keyed, combination or keyed lock and three-point latch for security (ordered separately)

Specifications:

- Includes: Door, hinges, installation hardware (order lock kit separately, see tables)
- Material: Steel
- Finish: Black or Glacier White

Ordering:

- Select part number to match the width, usable height and color of the cabinet
- Select the door lock kit separately, there are two styles of lock to choose from:
 - Keyed lock
 - Combination and keyed lock has three 10-digit dials (1000 possible combinations) on the handle and a master key



Double Perforated Rear Door for N-Series TeraFrame Gen 3 Cabinets			
Part Number - Cabinet Width		Description Height (U)	Shipping Weight lb (kg)
31.5"W (800 mm)	40.0"W (1016 mm)		
39050-X22	39050-X44	42	41 (18.6)
39050-X23	39050-X45	43	42 (19.1)
39050-X24	39050-X46	44	43 (19.5)
39050-X25	39050-X47	45	43 (19.5)
39050-X26	39050-X48	46	44 (20.0)
39050-X27	39050-X49	47	45 (20.4)
39050-X28	39050-X50	48	56 (25.4)
39050-X29	39050-X51	49	57 (25.9)
39050-X30	39050-X52	50	58 (26.3)
39050-X31	39050-X53	51	59 (26.8)
39050-X32	39050-X54	52	60 (27.2)

X=Color, C=Black, E=Glacier White. Shipping Weights are for 1016 mm kits.

Lock Kit for Double Perforated Rear Door for N-Series TeraFrame Gen 3 Cabinets				
Part Number		Latch Type	Description Door Height (U)	Shipping Weight lb (kg)
Keyed	Combination and Keyed			
39054-C00	39055-C00	Three-Point	42	4 (1.8)
39054-C01	39055-C01	Three-Point	43	4 (1.8)
39054-C02	39055-C02	Three-Point	44	4 (1.8)
39054-C03	39055-C03	Three-Point	45	4 (1.8)
39054-C04	39055-C04	Three-Point	46	4 (1.8)
39054-C05	39055-C05	Three-Point	47	5 (2.3)
39054-C06	39055-C06	Three-Point	48	5 (2.3)
39054-C07	39055-C07	Three-Point	49	5 (2.3)
39054-C08	39055-C08	Three-Point	50	5 (2.3)
39054-C09	39055-C09	Three-Point	51	5 (2.3)
39054-C10	39055-C10	Three-Point	52	5 (2.3)

Color is Black. Lock Kit includes swing handle, mounting plate, latch, lock, keys and installation hardware.

800-834-4969 in U.S. & Canada • www.chatsworth.com



CHATSWORTH PRODUCTS

+1-800-834-4969

techsupport@chatsworth.com
www.chatsworth.com

Product Cut Sheet

N-SERIES TERAFRAME® GEN 3 NETWORK CABINET SYSTEM SERVICE PARTS

Solid Rear Door With Perforated Insert and Lock Kits

Solid door with perforated insert provides security and blocks airflow to/from rack-mount equipment in the cabinet when closed.

Key Features:

- Low profile, flat, solid metal door with perforated insert and perimeter seal
- Used with Vertical Exhaust Duct, Bottom Panel, 1 Side Air Dam and Side Intake Duct as part of the CPI Passive Cooling Solution to support side-to-top airflow, provide extra cold air from the back side of the cabinet, capture hot exhaust air and guide it away from the cabinet
- Single door on 31.5"W (800 mm) cabinet
- Double door on 40.0"W (1016 mm) cabinet
- 78% open in perforated area for excellent airflow
- Universal mounting location allows use on the front or rear of the cabinet
- Single-door can be attached to the cabinet to swing open to the left or right
- Opens 180° when cabinets are bayed or stand alone
- Hinge pins allow quick and easy tool-less removal of the door for maintenance access
- Choice of lock kit with swing handle; keyed or combination/keyed lock and two-point latch for security (ordered separately)

Specifications:

- Includes: Door, hinges, installation hardware (order lock kit separately, see tables)
- Material: Steel Sheet
- Finish: Black or Glacier White

Ordering:

- Select part number to match the width, usable height and color of the cabinet
- Select the door lock kit separately, there are two styles of lock to choose from:
 - Keyed lock
 - Combination and keyed lock has three 10-digit dials (1000 possible combinations) on the handle and a master key

Single Solid Rear Door With Perforated Insert for 31.5"W (800 mm) N-Series TeraFrame Gen 3 Cabinets		
Part Number	Description	Shipping Weight
31.5"W (800 mm)	Height (U)	lb (kg)
39323-X22	42	51 (23.1)
39323-X23	43	52 (23.6)
39323-X24	44	53 (24.0)
39323-X25	45	54 (24.5)
39323-X26	46	55 (24.9)
39323-X27	47	56 (25.4)
39323-X28	48	57 (25.9)
39323-X29	49	58 (26.3)
39323-X30	50	59 (26.8)
39323-X31	51	61 (27.7)
39323-X32	52	62 (28.1)

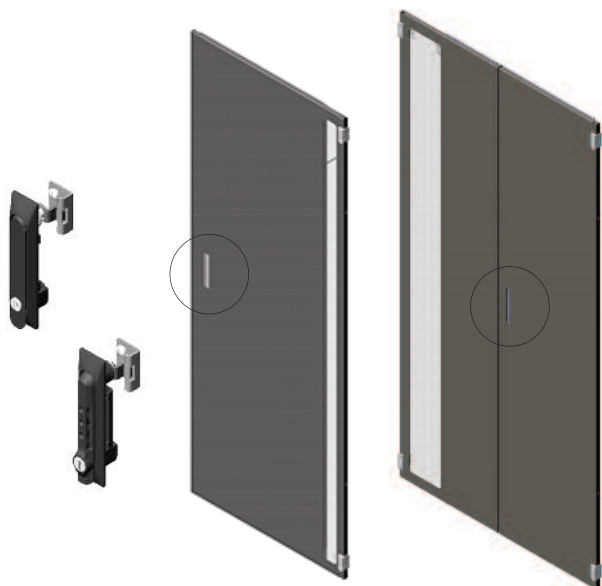
X=Color; C=Black, E=Glacier White. Shipping Weights are for 1016 mm kits.

Double Solid Rear Door with Perforated Insert for 40.0"W (1016 mm) N-Series TeraFrame Gen 3 Cabinets		
Part Number	Description	Shipping Weight
40.0"W (1016 mm)	Height (U)	lb (kg)
39313-X00	42	72 (32.7)
39313-X01	43	73 (33.1)
39313-X02	44	75 (34.0)
39313-X03	45	77 (34.9)
39313-X04	46	79 (35.8)
39313-X05	47	80 (36.3)
39313-X06	48	81 (36.7)
39313-X07	49	83 (37.6)
39313-X08	50	84 (38.1)
39313-X09	51	85 (38.6)
39313-X10	52	87 (39.5)

X=Color; C=Black, E=Glacier White. Shipping Weights are for 1016 mm kits.

Lock Kit for Solid Rear Door with Perforated Insert for N-Series TeraFrame Gen 3 Cabinets				
Part Number		Latch Type	Description Door Height (U)	Shipping Weight lb (kg)
Keyed	Combination and Keyed			
39074-C00	39075-C00	Two-Point	42	4 (1.8)
39074-C01	39075-C01	Two-Point	43	4 (1.8)
39074-C02	39075-C02	Two-Point	44	4 (1.8)
39074-C03	39075-C03	Two-Point	45	4 (1.8)
39074-C04	39075-C04	Two-Point	46	4 (1.8)
39074-C05	39075-C05	Two-Point	47	5 (2.3)
39074-C06	39075-C06	Two-Point	48	5 (2.3)
39074-C07	39075-C07	Two-Point	49	5 (2.3)
39074-C08	39075-C08	Two-Point	50	5 (2.3)
39074-C09	39075-C09	Two-Point	51	5 (2.3)
39074-C10	39075-C10	Two-Point	52	5 (2.3)

Color is Black. Lock Kit includes swing handle, mounting plate, latch, lock, keys and installation hardware.



800-834-4969 in U.S. & Canada • www.chatsworth.com



CHATSWORTH PRODUCTS

+1-800-834-4969

techsupport@chatsworth.com
www.chatsworth.com

Product Cut Sheet

N-SERIES TERAFRAME® GEN 3 NETWORK CABINET SYSTEM SERVICE PARTS

Standard Top Panel

Solid single-piece top panel with large grommet sealed cable openings in each corner contains airflow within the cabinet while allowing cables to enter/exit the top panel

Key Features:

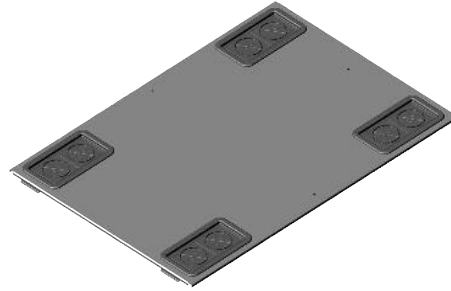
- Standard Top Panel with grommet sealed cable openings
- Use in traditional hot aisle/cold aisle environments or with aisle containment for front-to-rear airflow through the cabinet; not compatible with Vertical Exhaust Duct
- One-piece design for easy installation or removal
- Four cable openings, one per corner, are 4.5"W x 9"D (114 mm x 228 mm) without cover, sized for large power plugs
- Includes four plastic, snap on grommets that seal cable openings and can be cut to pass cables
- Tool-less installation, drop in design with integrated spring button secures top panel to the cabinet frame without additional installation hardware
- Integrated grounding tab to electrically bond the top panel to cabinet frame with included jumper

Specifications:

- Includes: Top panel with grommets, ground jumper
- Material: Steel top panel; plastic grommets
- Finish: Black or Glacier White; grommets are black

Ordering:

- Select part number to match the width, depth and color of the cabinet



Standard Top Panel for N-Series TeraFrame Gen 3 Cabinets			
Part Number - Cabinet Width		Frame Depth in (mm)	Shipping Weight lb (kg)
31.5"W (800 mm)	40.0"W (1016 mm)		
39025-X08	39025-X08	39.4 (1000)	16 (7.3)
39025-X09	39025-X09	40.4 (1025)	16 (7.3)
39025-X10	39025-X10	41.3 (1050)	17 (7.7)
39025-X11	39025-X11	42.3 (1075)	17 (7.7)
39025-X12	39025-X12	43.3 (1100)	18 (8.2)
39025-X13	39025-X13	44.3 (1125)	18 (8.2)
39025-X14	39025-X14	45.3 (1150)	18 (8.2)
39025-X15	39025-X15	46.3 (1175)	19 (8.6)
39025-X16	39025-X16	47.2 (1200)	19 (8.6)

X=Color; C=Black, E=Glacier White. Use with Cable Entry Brush (P/N 39433-XXX or 39435-XXX) or Cable Port Seal (P/N39413-XXX or 39415-XXX).

Bottom Panel

Bottom Panel seals the bottom of the cabinet to contain and control airflow in cabinets that are elevated on casters or leveling feet.

Key Features:

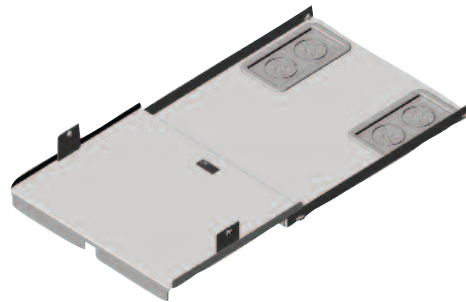
- Solid panel with two large grommet sealed cable openings in the back corners
- Grommets are plastic, snap on, seal cable openings and can be cut to pass cables
- Unsealed openings are 4.5"W x 9.0"D (114 mm x 228 mm), wide enough to pass large PDU plugs
- Attaches to the bottom slide on the cabinet, install before rack-mount equipment
- Two piece panel for easier installation, adjusts to fit cabinets 39.4"D (1000 mm) or deep

Specifications:

- Includes: bottom panel, grommets, installation brackets and hardware
- Material: Steel panels, plastic grommets
- Finish: Black or Glacier White; grommets are black

Ordering:

- Select part number to match the color of the cabinet
- Use with Cable Port Seal, Bottom or Cable Entry Brush Bottom



Bottom Panel			
Part Number - Cabinet Width		Frame Depth in (mm)	Shipping Weight lb (kg)
31.5"W (800 mm)	40.0"W (1016 mm)		
39410-X01	39410-X01	≥39.4 (1000)	20 (9.1)

X=Color; C=Black, E=Glacier White. Shipping Weights are for 1016 mm kits. Bottom Panel is included with cabinets that have a Vertical Exhaust Duct top panel.

800-834-4969 in U.S. & Canada • www.chatsworth.com



CHATSWORTH PRODUCTS

+1-800-834-4969

techsupport@chatsworth.com
www.chatsworth.com

Product Cut Sheet

N-SERIES TERAFRAME® GEN 3 NETWORK CABINET SYSTEM SERVICE PARTS

Vertical Exhaust Duct Kit

Vertical Exhaust Duct attaches to the top of the cabinet to provide a sealed pathway for hot air from the top of the cabinet to an overhead drop ceiling as part of a closed hot air return.



Key Features:

- Fits cabinets that are 41.3"D (1050 mm) or deeper
- Includes: Vertical Exhaust Duct, top panel, Bottom Panel and installation hardware
- Two-piece duct adjusts in height to span the distance between the top of the cabinet and the overhead drop ceiling, has a flexible seal at the top to accommodate variations in the drop ceiling, and an 8.8"W x 1.9"H (224 mm x 48 mm) brush sealed cable opening on the back for power cord entry; available in three sizes
- Solid top panel has two large grommet sealed cable openings in the front corners
- Solid bottom panel has two large grommet sealed cable openings in the back corners
- Grommets are plastic, snap on, seal cable openings and can be cut to pass cables
- Unsealed cable openings are 4.5"W x 9.0"D (114 mm x 228 mm), wide enough to pass large PDU plugs

Specifications:

- Includes: Top panel, bottom panel, grommets, Vertical Exhaust Duct and installation hardware
- Material: Steel duct, top and bottom panels; seals, duct corners and brush seal and grommets are plastic
- Finish: Black or Glacier White; corners, seals and grommets are black

Ordering:

- Select part number to match the duct height and color of the cabinet



Vertical Exhaust Duct Kit				
Part Number - Duct Height			Frame Depth in (mm)	Shipping Weight lb (kg)
Short 14"-20"H (356-508 mm)	Medium 20"-34"H (508-863 mm)	Tall 34"-60"H (863-1523 mm)		
39440-X10	39441-X10	39442-X10	41.3 (1050)	49 (22.2)
39440-X11	39441-X11	39442-X11	42.3 (1075)	49 (22.2)
39440-X12	39441-X12	39442-X12	43.3 (1100)	49 (22.2)
39440-X13	39441-X13	39442-X13	44.3 (1125)	50 (22.7)
39440-X14	39441-X14	39442-X14	45.3 (1150)	50 (22.7)
39440-X15	39441-X15	39442-X15	46.3 (1175)	51 (23.1)
39440-X16	39441-X16	39442-X16	47.2 (1200)	51 (23.1)

X=color; C=Black, E=Glacier White. Shipping Weights are for Tall kits.

U.S. patents apply to this product. For details visit www.chatsworth.com/patents

800-834-4969 in U.S. & Canada • www.chatsworth.com



CHATSWORTH PRODUCTS

+1-800-834-4969

techsupport@chatsworth.com
www.chatsworth.com

Product Cut Sheet

N-SERIES TERAFRAME® GEN 3 NETWORK CABINET SYSTEM SERVICE PARTS

Cable Port Seal

Cable Port Seal is a set of plastic grommets that seal the top or bottom cable port openings along the sides of the cabinet to prevent bypass airflow around equipment.

Key Features:

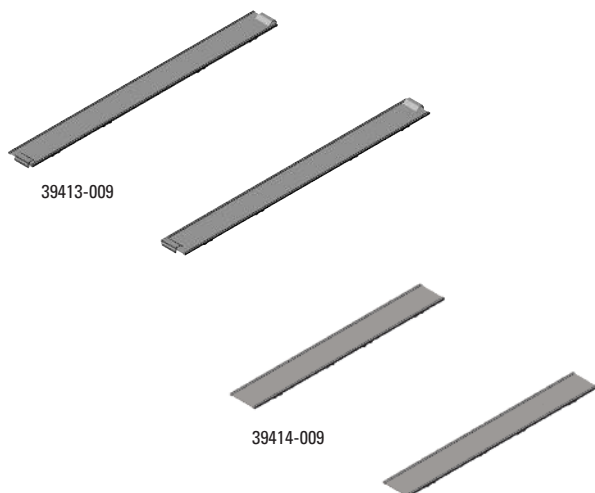
- Available in two styles to match the top or bottom cable port openings on the cabinet
- Grommets are plastic, snap on, seal cable openings and can be cut to pass cables

Specifications:

- Includes: (2) grommets
- Material: Plastic
- Finish: Black

Ordering:

- Select part number to match the width and depth of the cabinet



Cable Port Seal, Top			
Part Number - Cabinet Width		Frame Depth in (mm)	Shipping Weight lb (kg)
31.5"W (800 mm)	40.0"W (1016 mm)		
39413-008	N/A	39.4 (1000)	4 (1.8)
39413-009	N/A	40.4 (1025)	4 (1.8)
39413-010	N/A	41.3 (1050)	4 (1.8)
39413-011	N/A	42.3 (1075)	4 (1.8)
39413-012	39415-012	43.3 (1100)	7 (3.2)
39413-013	39415-013	44.3 (1125)	7 (3.2)
39413-014	39415-014	45.3 (1150)	7 (3.2)
39413-015	39415-015	46.3 (1175)	7 (3.2)
39413-016	39415-016	47.2 (1200)	7 (3.2)

Color is Black. Shipping Weights are for 1016 mm kits.

Cable Port Seal, Bottom			
Part Number - Cabinet Width		Frame Depth in (mm)	Shipping Weight lb (kg)
31.5"W (800 mm)	40.0"W (1016 mm)		
39414-008	N/A	39.4 (1000)	3 (1.4)
39414-009	N/A	40.4 (1025)	3 (1.4)
39414-010	N/A	41.3 (1050)	3 (1.4)
39414-011	N/A	42.3 (1075)	4 (1.8)
39414-012	39416-012	43.3 (1100)	5 (2.3)
39414-013	39416-013	44.3 (1125)	5 (2.3)
39414-014	39416-014	45.3 (1150)	5 (2.3)
39414-015	39416-015	46.3 (1175)	5 (2.3)
39414-016	39416-016	47.2 (1200)	5 (2.3)

Color is Black. Shipping Weights are for 1016 mm kits.

800-834-4969 in U.S. & Canada • www.chatsworth.com



CHATSWORTH PRODUCTS

+1-800-834-4969

techsupport@chatsworth.com
www.chatsworth.com

Product Cut Sheet

N-SERIES TERAFRAME® GEN 3 NETWORK CABINET SYSTEM SERVICE PARTS

Cable Entry Brush

Cable Entry Brush is a set of plastic brushes that seal the cable openings along the sides of the cabinet to prevent bypass airflow around equipment.

Key Features:

- Easy addition and removal of cables through brush opening
- Brushes form a tight seal around cables to minimize leakage through cable openings
- Available in two styles to match the top or bottom cable openings on the cabinet
- Snap on design for easy installation

Specifications:

- Includes: (2) brush covers
- Material: Plastic
- Finish: Black

Ordering:

- Select part number to match the width and depth of the cabinet



Cable Entry Brush, Top			
Part Number - Cabinet Width		Frame Depth in (mm)	Shipping Weight lb (kg)
31.5"W (800 mm)	40.0"W (1016 mm)		
39433-008	N/A	39.4 (1000)	5 (2.3)
39433-009	N/A	40.4 (1025)	5 (2.3)
39433-010	N/A	41.3 (1050)	5 (2.3)
39433-011	N/A	42.3 (1075)	5 (2.3)
39433-012	39435-012	43.3 (1100)	8 (3.6)
39433-013	39435-013	44.3 (1125)	8 (3.6)
39433-014	39435-014	45.3 (1150)	8 (3.6)
39433-015	39435-015	46.3 (1175)	8 (3.6)
39433-016	39435-016	47.2 (1200)	9 (4.1)

Color is Black. Shipping Weights are for 1016 mm kits.

Cable Entry Brush, Bottom			
Part Number - Cabinet Width		Frame Depth in (mm)	Shipping Weight lb (kg)
31.5"W (800 mm)	40.0"W (1016 mm)		
39434-008	N/A	39.4 (1000)	5 (2.3)
39434-009	N/A	40.4 (1025)	5 (2.3)
39434-010	N/A	41.3 (1050)	5 (2.3)
39434-011	N/A	42.3 (1075)	5 (2.3)
39434-012	39436-012	43.3 (1100)	8 (3.6)
39434-013	39436-013	44.3 (1125)	8 (3.6)
39434-014	39436-014	45.3 (1150)	8 (3.6)
39434-015	39436-015	46.3 (1175)	8 (3.6)
39434-016	39436-016	47.2 (1200)	9 (4.1)

Color is Black. Shipping Weights are for 1016 mm kits.

800-834-4969 in U.S. & Canada • www.chatsworth.com



CHATSWORTH PRODUCTS

+1-800-834-4969

techsupport@chatsworth.com
www.chatsworth.com

Product Cut Sheet

N-SERIES TERAFRAME® GEN 3 NETWORK CABINET SYSTEM SERVICE PARTS

Air Dam

Air Dam blocks airflow around the sides and top of the equipment mounting space, so cold air passes through equipment and hot air does not recirculate around equipment.

Key Features:

- Attaches to and adjusts with mounting rails
- Requires a minimum rail setback of 7.6" (193 mm) from the front of the cabinet frame
- Flexible seal against top and side panels
- Two styles available: 1 Side and 2 Side
 - 1 Side is used with the Intake Duct to control side airflow
 - 2 Side is used to control front-to-rear airflow
- Each side has five cable openings to allow front-to-rear cabling
 - 31.5"W (800 mm) models have 5.5"H x 2.0"W (140 mm x 51 mm) cable openings
 - 40.0"W (1016 mm) models have 9.0"H x 4.5"W (228 mm x 114 mm) cable openings
- Includes plastic grommets to seal the cable openings

Specifications:

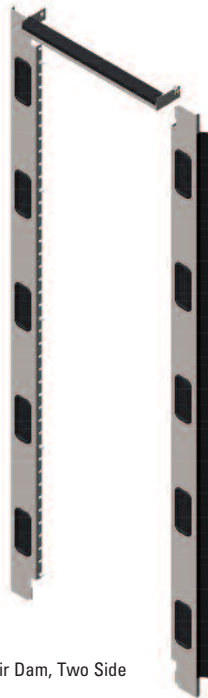
- Includes: (1) top and (1 or 2) side baffles, grommets, installation hardware
- Material: Steel baffles, plastic grommets and seals
- Finish: Black or Glacier White; seals are black

Ordering:

- Select part number to match the width, usable height and color of the cabinet
- Use with Side Panels, Bottom Panel and Cable Port Seal or Cable Entry Brush



Air Dam, One Side



Air Dam, Two Side

Air Dam, 1 Side			
Part Number - Cabinet Width		Height (U)	Shipping Weight lb (kg)
31.5"W (800 mm)	40.0"W (1016 mm)		
39386-X00	39384-X00	42	16 (7.3)
39386-X01	39384-X01	43	17 (7.7)
39386-X02	39384-X02	44	17 (7.7)
39386-X03	39384-X03	45	17 (7.7)
39386-X04	39384-X04	46	18 (8.2)
39386-X05	39384-X05	47	18 (8.2)
39386-X06	39384-X06	48	18 (8.2)
39386-X07	39384-X07	49	19 (8.6)
39386-X08	39384-X08	50	19 (8.6)
39386-X09	39384-X09	51	20 (9.1)
39386-X10	39384-X10	52	20 (9.1)

X=Color; C=Black, E=Glacier White. Shipping Weights are for 1016 mm kits.

Air Dam, 2 Side			
Part Number - Cabinet Width		Height (U)	Shipping Weight lb (kg)
31.5"W (800 mm)	40.0"W (1016 mm)		
39387-X00	39385-X00	42	27 (12.2)
39387-X01	39385-X01	43	27 (12.2)
39387-X02	39385-X02	44	28 (12.7)
39387-X03	39385-X03	45	28 (12.7)
39387-X04	39385-X04	46	29 (13.2)
39387-X05	39385-X05	47	30 (13.6)
39387-X06	39385-X06	48	30 (13.6)
39387-X07	39385-X07	49	31 (14.1)
39387-X08	39385-X08	50	32 (14.5)
39387-X09	39385-X09	51	32 (14.5)
39387-X10	39385-X10	52	33 (15.0)

X=Color; C=Black, E=Glacier White. Shipping Weights are for 1016 mm kits.

800-834-4969 in U.S. & Canada • www.chatsworth.com



CHATSWORTH PRODUCTS

+1-800-834-4969

techsupport@chatsworth.com
www.chatsworth.com

Product Cut Sheet

N-SERIES TERAFRAME® GEN 3 NETWORK CABINET SYSTEM SERVICE PARTS

Intake Duct

Intake Duct is used with switches that require side to side airflow to separate hot and cold air within the cabinet, so cold air passes through equipment and hot air does not recirculate around equipment.

Key Features:

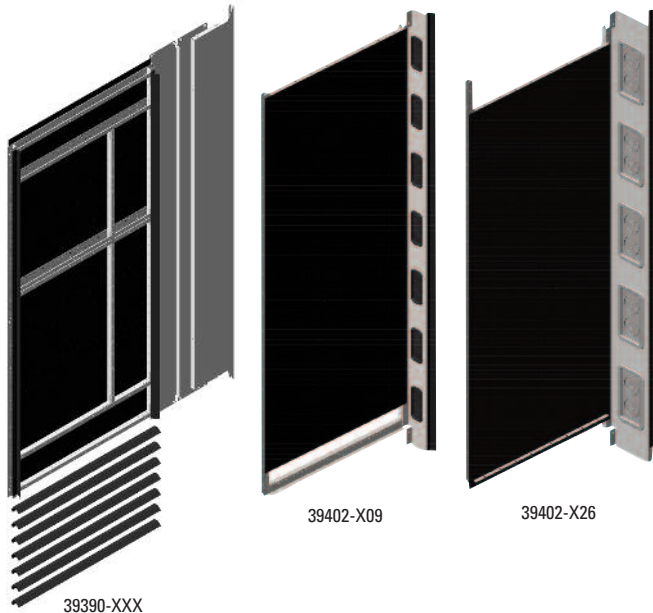
- Attaches to the cabinet frame
- Creates a highly effective front-to-rear hot/cold air barrier along the intake side of switches
- Field-configured to match the switch with flexible seal against the switch
- Two styles available:
 - Vertical Exhaust Duct Compatible for front-to-top airflow
 - Aisle Containment Compatible for front-to-rear airflow
- The Aisle Containment Compatible style has cable openings for front-to-rear cabling
 - 31.5"W (800 mm) models have seven 5.5"H x 2.0"W (140 mm x 51 mm) cable openings
 - 40.0"W (1016 mm) models have five 9.0"H x 4.5"W (228 mm x 114 mm) cable openings
- Includes plastic grommets to seal the cable openings

Specifications:

- Includes: (1) side baffle, panel brackets, panels, seal and installation hardware
- Material: Steel baffles and brackets, plastic duct panels and seals
- Finish: Black or Glacier White; panel and seals are black

Ordering:

- Select part number to match the width, usable height and color of the cabinet
- Use with Air Dam 1 Side, Bottom Panel and Cable Port Seal or Cable Entry Brush



Intake Duct, Vertical Exhaust Duct Compatible			
Part Number - Cabinet Width		Height (U)	Shipping Weight lb (kg)
31.5"W (800 mm)	40.0"W (1016 mm)		
39390-X06	39390-X06	42	48 (21.8)
39390-X07	39390-X07	43	49 (22.2)
39390-X08	39390-X08	44	49 (22.2)
39390-X09	39390-X09	45	50 (22.7)
39390-X10	39390-X10	46	51 (23.1)
39390-X11	39390-X11	47	52 (23.6)
39390-X12	39390-X12	48	53 (24.0)
39390-X13	39390-X13	49	54 (24.5)
39390-X14	39390-X14	50	55 (24.9)
39390-X15	39390-X15	51	55 (24.9)
39390-X16	39390-X16	52	56 (25.4)

X=Color; C=Black, E=Glacier White. Shipping Weights are for 1016 mm kits.

Intake Duct, Aisle Containment Compatible			
Part Number - Cabinet Width		Height (U)	Shipping Weight lb (kg)
31.5"W (800 mm)	40.0"W (1016 mm)		
39402-X06	39402-X23	42	48 (21.8)
39402-X07	39402-X24	43	49 (22.2)
39402-X08	39402-X25	44	49 (22.2)
39402-X09	39402-X26	45	50 (22.7)
39402-X10	39402-X27	46	51 (23.1)
39402-X11	39402-X28	47	52 (23.6)
39402-X12	39402-X29	48	53 (24.0)
39402-X13	39402-X30	49	54 (24.5)
39402-X14	39402-X31	50	55 (24.9)
39402-X15	39402-X32	51	55 (24.9)
39402-X16	39402-X33	52	56 (25.4)

X=Color; C=Black, E=Glacier White. Shipping Weights are for 1016 mm kits.

800-834-4969 in U.S. & Canada • www.chatsworth.com



CHATSWORTH PRODUCTS

+1-800-834-4969

techsupport@chatsworth.com
www.chatsworth.com

Product Cut Sheet

N-SERIES TERAFRAME® GEN 3 NETWORK CABINET SYSTEM SERVICE PARTS

Side Panel

Solid side panels protect equipment and contain airflow within the cabinet.

Key Features:

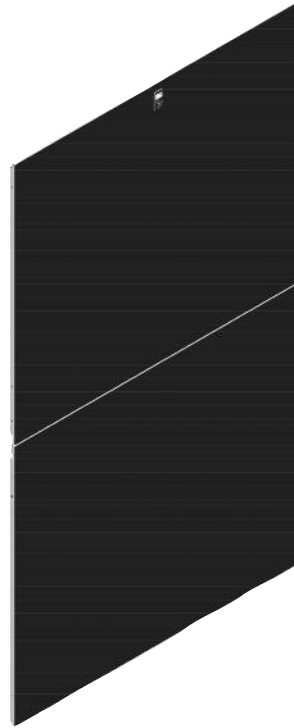
- Two-piece design with top and bottom halves for easier handling
- Tool-less removal, drop in design with integrated locking spring latch secures the side panel to the cabinet frame
- Integrated grounding tabs to electrically bond the side panel to cabinet frame with included jumpers

Specifications:

- Includes: one side panel (top and bottom panels), ground jumpers
- Material: Steel panel
- Finish: Black or Glacier White

Ordering:

- Select part number to match the height, depth and color of the cabinet



Side Panel for N-Series TeraFrame Gen 3 Cabinets

Frame Style	Height (U)											Cabinet Frame Depth in (mm)	Shipping Weights lb (kg)
	42	43	44	45	46	47	48	49	50	51	52		
39330	-X08	-X25	-X42	-X59	-X76	-X93	-XAL	-XBH	-XCE	-XDB	-XDW	39.4 (1000)	56 (25.4)
	-X09	-X26	-X43	-X60	-X77	-X94	-XAM	-XBJ	-XCF	-XDC	-XDY	40.4 (1025)	58 (26.3)
	-X10	-X27	-X44	-X61	-X78	-X95	-XAN	-XBK	-XCG	-XDD	-XEA	41.3 (1050)	59 (26.8)
	-X11	-X28	-X45	-X62	-X79	-X96	-XAP	-XBL	-XCH	-XDE	-XEB	42.3 (1075)	60 (27.2)
	-X12	-X29	-X46	-X63	-X80	-X97	-XAR	-XBM	-XCJ	-XDF	-XEC	43.3 (1100)	62 (28.1)
	-X13	-X30	-X47	-X64	-X81	-X98	-XAT	-XBN	-XCK	-XDG	-XED	44.3 (1125)	63 (28.6)
	-X14	-X31	-X48	-X65	-X82	-X99	-XAU	-XBP	-XCL	-XDH	-XEE	45.3 (1150)	65 (29.5)
	-X15	-X32	-X49	-X66	-X83	-XAA	-XAV	-XBR	-XCM	-XDJ	-XEF	46.3 (1175)	66 (29.9)
-X16	-X33	-X50	-X67	-X84	-XAB	-XAW	-XBT	-XCN	-XDK	-XEG	47.2 (1200)	68 (30.8)	

X=Color; C=Black, E=Glacier White. Shipping Weights are for 52U panels.

800-834-4969 in U.S. & Canada • www.chatsworth.com



CHATSWORTH PRODUCTS

+1-800-834-4969

techsupport@chatsworth.com
www.chatsworth.com

Product Cut Sheet

N-SERIES TERAFRAME® GEN 3 NETWORK CABINET SYSTEM SERVICE PARTS

Equipment Rail Assembly

One pair of equipment mounting rails used to support 19" EIA rack-mount equipment inside the cabinet.

Key Features:

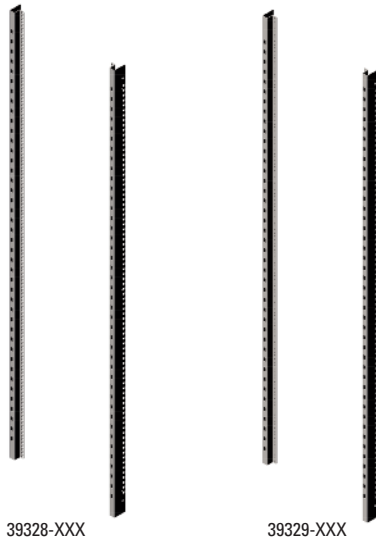
- Provides support for 19" EIA-310-E compliant rack-mount equipment
- Rack-mount spaces (U) are marked and numbered on the rails to easily locate equipment
- Available with square-punched or #12-24 tapped mounting rails
- Square-punched equipment mounting holes accept snap-in cage nuts allowing mounting hardware to change to match equipment requirements; includes (25) M6 Clik-Nuts and screws, order additional mounting hardware separately
- Tapped mounting rails accept #12-24 mounting screws allowing quick attachment of panel mount equipment, but mounting hardware cannot be changed; includes (50) #12-24 screws, order additional mounting hardware separately
- Rails slide front-to-rear within the cabinet; adjust position to match the depth of equipment
- Easy adjustment, loosen two bolts to slide rails along supports, supports are marked with a scale for quick positioning and alignment
- Attachment points along the sides of the rails support cable or thermal management accessories

Specifications:

- Includes: One pair of mounting rails, installation hardware, and (25) Clik-Nuts with square-punched rails or (50) mounting screws with tapped rails
- Material: Steel
- Finish: Black or Glacier White, zinc hardware

Ordering:

- Select part number to match the usable height and color of the cabinet
- Order additional equipment mounting hardware (cage nuts or screws) separately



Equipment Rail Assembly for N-Series TeraFrame Gen 3 Cabinets			
Part Number		Height (U)	Shipping Weight lb (kg)
Square-Punched	#12-24 Tapped		
39328-X00	39329-X00	42	23 (10.4)
39328-X01	39329-X01	43	23 (10.4)
39328-X02	39329-X02	44	23 (10.4)
39328-X03	39329-X03	45	24 (10.9)
39328-X04	39329-X04	46	24 (10.9)
39328-X05	39329-X05	47	25 (11.3)
39328-X06	39329-X06	48	25 (11.3)
39328-X07	39329-X07	49	25 (11.3)
39328-X08	39329-X08	50	26 (11.8)
39328-X09	39329-X09	51	26 (11.8)
39328-X10	39329-X10	52	27 (12.2)

X=Color, C=Black, E=Glacier White. Shipping Weights are for #12-24 Tapped Rails.

Equipment Mounting Hardware for Square-Punched Equipment Rail Assembly		
Part Number	Description	Shipping Weight lb (kg)
76543-001	Clik-Nut Cage Nuts, Screws, M6, 25 Pack	1 (0.5)
76544-001	Clik-Nut Cage Nuts, Screws, 12-24, 25 Pack	1 (0.5)
76545-001	Clik-Nut Cage Nuts, Screws, 10-32, 25 Pack	1 (0.5)
12637-001	M6, Cage Nuts and Screws, 25 Pack	1 (0.5)
12638-001	#10-32, Cage Nuts and Screws, 25 Pack	1 (0.5)
12639-001	#12-24, Cage Nuts and Screws, 25 Pack	1 (0.5)

Note: Each Equipment Rail Assembly includes mounting hardware.

Equipment Mounting Hardware for #12-24 Tapped Equipment Rail Assembly		
Part Number	Description	Shipping Weight lb (kg)
40605-001	#12-24, Screws, 50 Pack, Zinc	1 (0.5)
40605-005	#12-24, Screws, 50 Pack, Black	1 (0.5)

800-834-4969 in U.S. & Canada • www.chatsworth.com



CHATSWORTH PRODUCTS

+1-800-834-4969

techsupport@chatsworth.com
www.chatsworth.com

Product Cut Sheet

N-SERIES TERAFRAME® GEN 3 NETWORK CABINET SYSTEM SERVICE PARTS

Integrated Cable Manager

Integrated Cable Manager are plastic, T-shaped cable guides that help organize patch cords and jumper cables as they enter and exit equipment at the front of the cabinet.

Key Features:

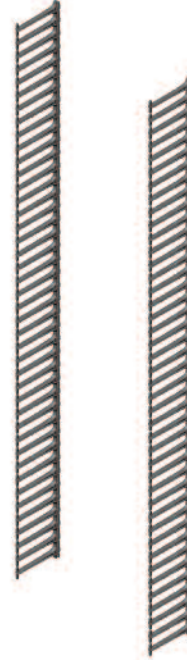
- Attaches to and adjusts with mounting rails
- Requires a minimum rail setback of 7.6" (193 mm) from the front of the cabinet frame
- Smooth, rounded surfaces on T-shaped cable guides to protect cables
- Openings in guides align with each rack-mount space (U) on the equipment mounting rails
- Openings are 6.6 in² (4260 mm²), large enough for 24 each .30" (7.6 mm) diameter cables

Specifications:

- Includes: One pair of full height Cable Managers
- Material: Plastic
- Finish: Black

Ordering:

- Select part number to match the usable height of the cabinet



Integrated Cable Manager			
Part Number - Cabinet Width		Height (U)	Shipping Weight lb (kg)
31.5"W (800 mm)	40.0"W (1016 mm)		
39375-000	39375-000	42	5 (2.3)
39375-001	39375-001	43	6 (2.7)
39375-002	39375-002	44	6 (2.7)
39375-003	39375-003	45	6 (2.7)
39375-004	39375-004	46	6 (2.7)
39375-005	39375-005	47	6 (2.7)
39375-006	39375-006	48	6 (2.7)
39375-007	39375-007	49	6 (2.7)
39375-008	39375-008	50	6 (2.7)
39375-009	39375-009	51	6 (2.7)
39375-010	39375-010	52	7 (3.2)

Color is Black.

800-834-4969 in U.S. & Canada • www.chatsworth.com



CHATSWORTH PRODUCTS

+1-800-834-4969

techsupport@chatsworth.com
www.chatsworth.com

Product Cut Sheet

N-SERIES TERAFRAME® GEN 3 NETWORK CABINET SYSTEM SERVICE PARTS

Telescoping Cable Manager

Telescoping Cable Manager attaches to the sides of the front and rear equipment mounting rail providing a front-to-rear or vertical pathway for cables along the side of equipment.

Key Features:

- Attaches to and adjusts in depth with mounting rails, fully compatible with Front Air Dams and Side Intake Duct
- Five smooth, plastic L-shaped spools support cables
- Spools on 31.5"W (800 mm) model are 2.5"H x 2.6"D (64 mm x 66 mm)
- Spools on 40.0"W (1016 mm) model are 3.3"H x 6.8"D (84 mm x 173 mm)
- Spools rotate and lock in 90-degree increments and can be adjusted to manage horizontal or vertical cable runs

Specifications:

- Includes: cable manager, five cable spools, installation hardware
- Material: Steel manager, plastic spools
- Finish: Black or Glacier White

Ordering:

- Select part number to match the color of the cabinet



Telescoping Cable Manager, Spool			
Part Number - Cabinet Width		Frame Depth in (mm)	Shipping Weight lb (kg)
31.5"W (800 mm)	40.0"W (1016 mm)		
39377-X01	39377-X02	Any	5 (2.3)

X=color; C=Black, E=Glacier White. Shipping Weights are for 1016 mm kits.

Caster Kit

Easily move the cabinet into location.

Key Features:

- Caster Kit is a set of four non-locking casters; two fixed, two swivel
- Non-load bearing, for moving the cabinet on site before loading with equipment
- Attaches to the bottom of the cabinet, must be removed before the cabinet is attached to the floor or loaded with equipment

Specifications:

- Includes: 4 casters, mounting brackets, installation hardware
- Material: Steel brackets, plastic wheels
- Finish: Black or Glacier white; wheels are black

Ordering:

- Select part number to match the width and color of the cabinet



Caster Kit for N-Series TeraFrame Gen 3 Cabinets			
Part Number - Cabinet Width		Frame Depth in (mm)	Shipping Weight lb (kg)
31.5"W (800 mm)	40.0"W (1016 mm)		
39357-X01	39358-X01	All	11 (5.0)

X=color; C=Black, E=Glacier White. Shipping Weights are for 1016 mm kits.

800-834-4969 in U.S. & Canada • www.chatsworth.com



CHATSWORTH PRODUCTS

While every effort has been made to ensure the accuracy of all information, CPI does not accept liability for any errors or omissions and reserves the right to change information and descriptions of listed services and products.

©2015 Chatsworth Products, Inc. All rights reserved. Chatsworth Products, CPI, CPI Passive Cooling, eConnect, MegaFrame, Saf-T-Grip, Seismic Frame, SlimFrame, TeraFrame, GlobalFrame, Cube-iT Plus, Evolution, OnTrac, QuadraRack and Velocity are federally registered trademarks of Chatsworth Products. Simply Efficient is a trademark of Chatsworth Products. All other trademarks belong to their respective companies. Rev.6. 10/17