



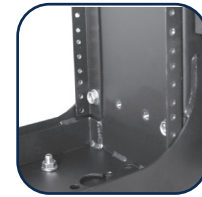
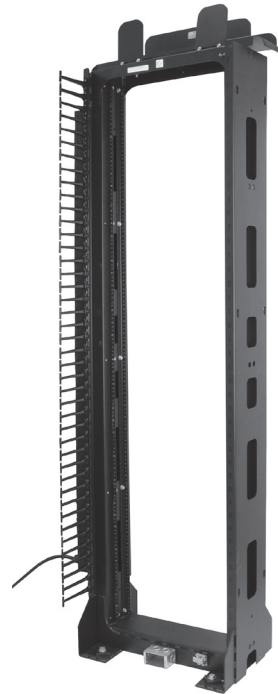
CHATSWORTH  
PRODUCTS

# SeismicFrame® Two-Post Rack

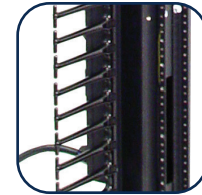
Support rack-mount network equipment in data centers and premise networks where seismic activity exists.

## KEY FEATURES

- Welded, steel network equipment rack engineered specifically to protect equipment in areas with seismic activity
- Independently seismic-tested and certified; meets industry-recognized Telcordia® Technologies, Inc. GR-63-CORE Network Equipment Building Systems (NEBS) Zone 4 requirements
- 1,000 lb (453.6 kg) load rating for seismic areas
- Supports 19" EIA-310-D compliant rack mount equipment like patch panels and network switches; 23" W version also available
- 19" W rack fits within a 24" (610 mm) raised access floor tile
- Available with #12-24 threaded or square punched adjustable-depth equipment mounting rails
- Equipment mounting rails have marked and numbered rack-mount spaces (U); numbering can start at the top or bottom of the rack
- Fully bonded rack has two masked grounding locations and includes a Two Mounting Hole Ground Terminal Block for easy connection to the Telecommunications Grounding Busbar
- Vertical Power Strips and T-shaped Cable Management Fingers attach directly to the rack channel to provide power and cable distribution for equipment



Adjustable Depth Mounting Rails



Cable Management



Two Mounting Hole Ground Terminal Block

HCAI OPM-0249

## SPECIFICATIONS

	Welded, steel frame
	Equipment mounting rails, two pairs
Includes	50 each equipment mounting screws/cage nuts
	4 each Anchor Washers
	1 each Two Mounting Hole Ground Terminal Block
	Height: 7' (2.1 m)
Available Sizes	Widths: 24" (610 mm) and 28" (710 mm)
	Depth: 15" (380 mm) at base; 9.6" (244 mm) vertical channels
Equipment Space	Height: 44U
	Width: 19" EIA or 23" Rail depths: 6" (150 mm) or 3" (80 mm)
Equipment Support	Two pairs of L-shaped equipment mounting rails fixed in place at 6"D (150 mm) or 3"D (80 mm)
	19" W EIA-310-D compliant or 23" W
	Universal Hole Pattern, 5/8"-5/8"-1/2" alternating vertical mounting hole spacing
	Threaded #12-24 or square-punched equipment mounting holes
Load Capacity	Includes 50 each mounting screws or cage nuts and mounting screws
	1000 lb (453.6 kg) of equipment in seismic areas
Bonding and Grounding	Rack components are bonded through welds
	Mounting rails are bonded to the rack through attachment hardware; optional zinc-plated mounting rails provide direct metal contact with rack-mount equipment
	Includes two masked ground connection points located at the top and base of the rack Includes one Two Mounting Hole Ground Terminal; Block for connection to the Telecommunications; Grounding Busbar

Availability: US, Canada, Latin America, Europe, Middle East & Africa

**United States & Canada**  
Simi Valley, CA  
800-834-4969  
Toronto, Ontario, Canada  
+905-850-7770  
chatsworth.com  
techsupport@chatsworth.com

**Latin America**  
Mexico City, Mexico  
+52-55-5203-7525  
Toll Free within Mexico  
800-201-7592  
chatsworth.com.co

**Europe**  
Buckinghamshire  
England, UK  
+44-1628-524-834

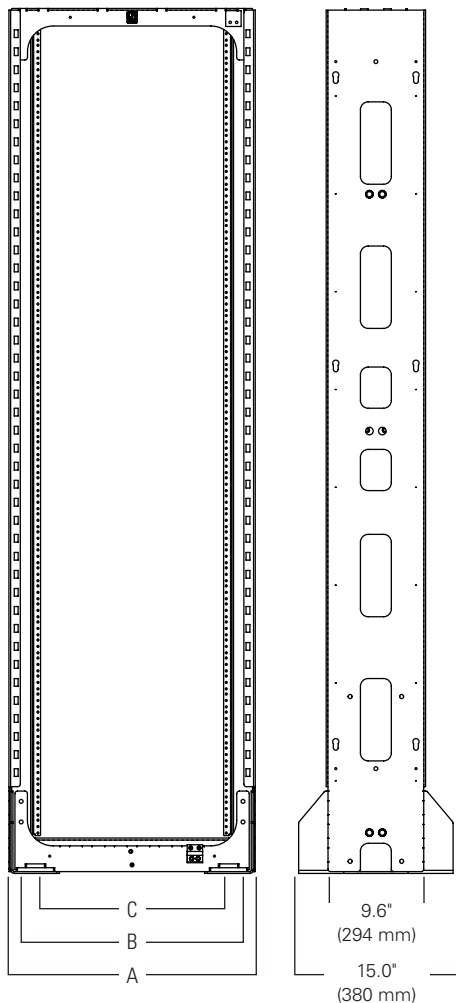
**Middle East & Africa**  
Dubai, UAE  
+971-4-2602125  
Doha, Qatar  
+974-4-267422

**Asia Pacific**  
Jing'an District,  
Shanghai, China  
+86 21 6880-0266  
chatsworth.com.cn

**SPECIFICATIONS**

Certifications:	EIA-310-D compliant; UL Listed NWIN per UL 60950, File E227626
	OSHPD Preapproval of Manufacturer's Certification (OPM-0249)
	GR-63-CORE, NEBS, Zone 4
	US Patent Number: 8,424,691
Material	Steel
Construction	Welded
	Mounting rails attach with hardware
Finish	Epoxy-polyester hybrid powder coat paint in black or gray
	Mounting rails are painted or zinc-plated
Installation	Each rack must be secured to the structural floor
	Order a seismic-rated, concrete anchor kit separately
	Recommended Concrete Floor Anchor : HILTI KWIK Bolt T, 3/4" – 5 1/2" L
	When bayed in a continuous row, the spacing between racks should be determined by a licensed structural engineer familiar with seismic applications and codes. Each installation requirement varies.
Environment	For indoor use only, in environmentally controlled areas; may not be used outdoors, in industrial or harsh environments, or in plenum spaces

**DIMENSIONS**



**FEATURES**

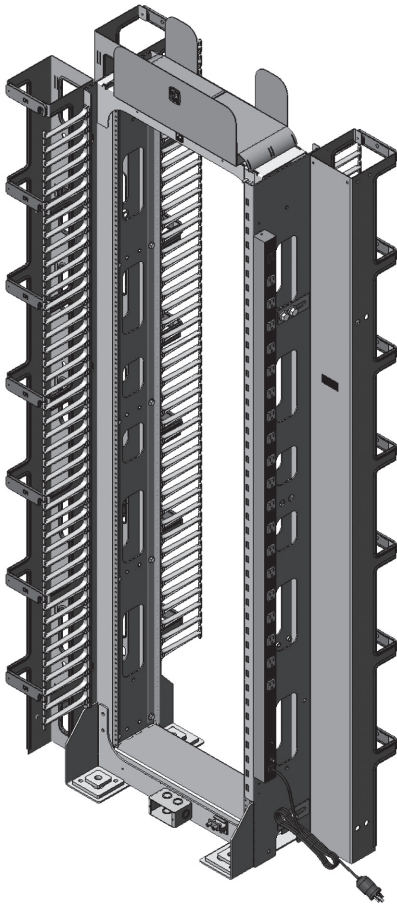
CPI's SeismicFrame®Two-Post Rack is designed specifically to support network equipment in areas with seismic activity. When earthquakes occur, equipment racks move back-and-forth with the building causing violent vibration through racks and equipment. An earthquake can easily damage or destroy non-seismic racks and equipment that are not carefully braced. The welded, steel SeismicFrameTwo-Post Rack resists the swaying motion caused by earthquakes to reduce the amount of vibration transferred through the rack to equipment and is less likely to be damaged during a seismic event, which means faster network recovery.

The SeismicFrameTwo-Post Rack supports 19" W EIA-310-D compliant or 23" W equipment with two pairs of mounting rails that can be spaced 6" (150 mm) or 3" (80 mm) apart. The mounting rails are marked and numbered with rack-mount spaces (U) and can be attached so that numbering starts at the bottom or top of the rack mount space. Choose threaded or square-punched mounting rails with a painted or zinc-plated finish. The mounting holes in threaded mounting rails are tapped with #12-24 threads to speed installation of panel-mount equipment with #12-24 screws. The square-punched rails accept cage nut hardware allowing you to change threads at each U to match equipment mounting requirements.

CPI's SeismicFrameTwo-Post Rack ships fully assembled and includes a Two Mounting Hole Ground Terminal Block for bonding the rack to the Telecommunications Grounding Busbar and 50 each equipment mounting screws or cage nuts and screws. The rack is rated for a 1000 lb (453.6 kg) seismic Zone 4 load per Section 4.4 of the Telcordia® Technologies, Inc. GR-63-CORE Network Equipment Building Systems (NEBS) requirements.

Description	19 in (mm)	23 in (mm)
Overall Width (A)	24.0 (610)	28.0 (710)
Frame Opening (B)	19.3 (490)	23.3 (592)
Rail Clearance (C)	17.75 (450)	21.75 (552)

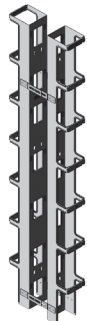
## SPECIFICATIONS



## ACCESSORIES

**Cable Management Fingers Kit**

- Organize patch cords and jumper cables by U.
- 7U-T-shaped plastic cable guides snap onto the front and rear of the rack frame
  - Openings between the T-shaped guides align with each U on the rack
  - Single-Sided Kit includes 12 cable guides for one side (front or rear) of the rack
  - Double-Sided Kit includes 24 cable guides for both sides (front and rear) of the rack

**Vertical Cabling Section**

- Provides a double-sided, front and rear cable pathway next to Seismic Frame Two-Post Rack.
- Separate front and rear 6"W x 6.38"D (150 mm x 162 mm) cable managers attach with included offset brackets
  - Large cable pass-through ports on the back of each manager align with ports in the side of the frame; spin-open plastic latches secure cables inside the managers
  - Keyhole slots on the back of the managers allow two power strips to be mounted on the back of each manager using the Hardware Kit
  - Includes one Single-Sided Cable Management Fingers Kit to organize cables by RMU
  - Made of aluminum
  - Includes installation hardware

## ORDERING INFORMATION:

SeismicFrame® Two-Post Rack		
Part Number	Description H x W ft (m)	Shipping Weight lb (kg)
13853-X03	7 (2.1) x 19"; 44U, Tapped #12-24 Zinc Rails	180 (81.6)
13854-X03	7 (2.1) x 19"; 44U, Square-Punched Zinc Rails	178 (80.7)
13855-X03	7 (2.1) x 19"; 44U, Tapped #12-24 Painted Rails	180 (81.6)
13856-X03	7 (2.1) x 19"; 44U, Square-Punched Painted Rails	178 (80.7)
13883-X03	7 (2.1) x 23"; 44U, Tapped #12-24 Zinc Rails	185 (83.9)
13884-X03	7 (2.1) x 23"; 44U, Square-Punched Zinc Rails	183 (83.0)
13885-X03	7 (2.1) x 23"; 44U, Tapped #12-24 Painted Rails	185 (83.9)
13886-X03	7 (2.1) x 23"; 44U, Square-Punched Painted Rails	183 (83.0)

Notes: X=color; 1=Gray, 7=Black.

Install using (4) seismic-rated concrete anchors (sold separately).

**Cable Management:**

- The top of the rack is punched with attachment points for the CPI Top-Mount Cable Waterfall Tray and Cable Runway
- Attach 9" W (230 mm), 12" W (300 mm), 15" W (380 mm) and 18" W (460 mm) Cable Runway to racks in perpendicular (front-to-back) orientation with the Cable Runway J-Bolt Kit; 23" W racks will also support 20" W (510 mm) Cable Runway
- Attach 12" W (300 mm) to 24" W (610 mm) Cable Runway in parallel (side-to-side) orientation with the 3" W (80 mm) Channel Rack-To-Runway Mounting Plate.
- The front of the rack is punched with attachment points for the CPI Cable Management Fingers Kits
- The sides of the rack are punched with three pairs of centered, 1/2-20 threaded attachment points for CPI SeismicFrame Two-Post Rack Vertical Cabling Section
- Attach a CPI Single-Sided Wide Vertical Cabling Section to the side of the rack with the CPI Vertical Cabling Section Offset Mounting Bracket Kit
- Evolution® Cable Management and MCS-EFX® Master Cabling Section with Extended Fingers will also attach to the side of the rack
- Velocity® Cable Management will not attach to the side of the rack

**Shelves:**

- Use CPI Heavy Duty Equipment Shelf for 6" (150 mm) Channel with the rack's mounting rails set 6" (150 mm) apart
- When rails are set 3" W (80 mm) apart, the maximum shelf width on 19" W racks is 19.3" W (490 mm) and the maximum shelf width on 23" W racks is 23.3" W (592 mm)

Cable Management Fingers Kit		
Part Number	Description	Shipping Weight lb (kg)
13696-001	Cable Management Fingers Kit, Single-Sided, Black	7 (3.2)
13696-002	Cable Management Fingers Kit, Double-Sided, Black	14 (6.4)

Notes: X=color; 1=Gray, 7=Black.

Vertical Cabling Section		
Part Number	Description	Shipping Weight lb (kg)
13704-X03	Vertical Cabling Section	35 (15.9)

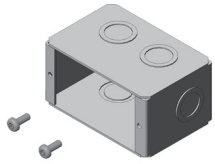
Notes: X=color; 1=Gray, 7=Black.

## ACCESSORIES

**Vertical Power Strip Mounting Hardware Kit**

Attach CPI 33"L (711 mm) Vertical Power Strips and PDUs directly to the side of SeismicFrame Two-Post Rack or the back of the SeismicFrame Two-Post Rack Vertical Cabling Section.

- Includes mounting hardware that allows tool-less attachment of two CPI 33"L (711 mm) Vertical Power Strips or PDUs to the keyholes on the sides of the SeismicFrame Two-Post Rack
- Top/Bottom keyholes are spaced 64.75" (1645 mm) apart, matches CPI eConnect PDUs
- Top/Middle keyholes are spaced 28" (711 mm) apart; matches CPI 33"L (838 mm) Vertical Power Strips

**Duplex Electrical Outlet Box**

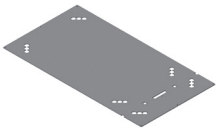
Provides a location for a power connection at the base of the rack.

- Includes a single-gang electrical outlet box for a single duplex receptacle and two self-tapping Torx head T25 installation screws
- Outlet box is welded steel, 3-3/4"H x 1-13/16"W x 2-1/2"D (95 mm x 46 mm x 64 mm) with a 15.5 in<sup>3</sup> (250 cm<sup>3</sup>) wiring capacity, has eight (four accessible) concentric knockouts for 1/2" or 3/4" conduit, and is zinc galvanized for corrosion protection
- UL Listed

**Tool-less Bend Radius Kit for Fiber Patch Cords**

Tool-less Bend Radius Kit for Fiber Patch Cords ensures proper bend radius support for fiber optic patch cords when transitioning through T-shaped cable guides. It snaps onto the finger manager without any tools, and can be used for new or retrofit applications.

- Provides proper bend radius support for fiber optic patch cords
- Tool-less installation
- May be installed in upward or downward orientations on either side of a T-shaped cable guide
- Available in packs of 10 or 50

**SeismicFrame Two-Post Rack Floor Drilling Template**

Quickly and easily locate and drill holes for SeismicFrame Two-Post Rack floor anchors.

- Durable 28"W x 15"D (710 mm x 380 mm) aluminum template locates floor mounting holes for 19"W and 23"W SeismicFrame Two-Post Racks
- Notched to indicate outside width of the 19"W rack for easy alignment when installing multiple racks

SeismicFrame® Two-Post Rack Accessories		
Part Number	Description	Shipping Weight lb (kg)
13697-001	Vertical Power Strip Mounting Kit, Clear	1 (0.5)
13698-001	Duplex Electrical Outlet Box, Zinc	1 (0.5)
13703-701	Floor Drilling Template, Black	6 (2.7)

Additional Accessories		
Part Number	Description	
15275-X01	Top-Mount Cable Waterfall Tray	14 (6.4)
40605-001	#12-24 Screws, Pack of 50, Zinc	1 (0.5)
40605-005	#12-24 Screws, Pack of 50, Black	1 (0.5)
12637-001	M6 Cage Nuts and Screws, pack of 25, Gold	1 (0.5)
12638-001	#10-32 Cage Nuts and Screws, Pack of 25, Zinc	1 (0.5)
12639-001	#12-24 Cage Nuts and Screws, Pack of 25, Black	1 (0.5)
12293-X19	Heavy Duty Shelf for 6" (150 mm) Channel, For 19" Rack	10 (4.5)
10595-X12	3" (80 mm) Channel Rack-To-Runway Mounting Plate Using J-Bolts 9 to 12" W (230 mm to 300 mm) Runway, Steel	5 (2.3)
10595-X18	3" (80 mm) Channel Rack-To-Runway Mounting Plate Using J-Bolts 15 to 18" W (380 mm to 460 mm) Runway, Steel	7 (3.2)
12408-X24*	3" (80 mm) Channel Rack-To-Runway Mounting Plate Using J-Bolts 20 to 24" W (510 mm to 610 mm) Runway, Aluminum	4 (1.8)
32697-001	Tool-less Bend Radius Kit for Fiber Patch Cords, Pack of 10, Black	1 (0.5)
32697-002	Tool-less Bend Radius Kit for Fiber Patch Cords, Pack of 50, Black	3 (1.4)

X=Color; 1=Gray, 7=Black, E=Glacier White. 10595 is available in (-0) for Gold Finish color. Kits include gold color hardware; gray and black kits include black color hardware. \*P/N 12408-X24 and 12409-X24 include hat-shaped mounting plate that adds 1.25" to the height of the rack.

[chatsworth.com](http://chatsworth.com)

[techsupport@chatsworth.com](mailto:techsupport@chatsworth.com)

800-834-4969



CHATSWORTH PRODUCTS

While every effort has been made to ensure the accuracy of all information, CPI does not accept liability for any errors or omissions and reserves the right to change information and descriptions of listed services and products.

©2023 Chatsworth Products, Inc. All rights reserved. Chatsworth Products, Clik-Nut, CPI, CPI Passive Cooling, CUBE-iT, Secure Array, eConnect, Evolution, GlobalFrame, MegaFrame, QuadraRack, RMR, Saf-T-Grip, SeismicFrame, SlimFrame, TeraFrame, Motive, EuroFrame, Oberon, Velocity and ZetaFrame are federally registered trademarks of Chatsworth Products. H-Plane, Hi-Bar, In-Plane, M-Frame, NetPoint, Simply Efficient, Skybar, and Wi-Tile and are trademarks of Chatsworth Products. All other trademarks belong to their respective companies. Rev10 11/23 MKT-60020-402