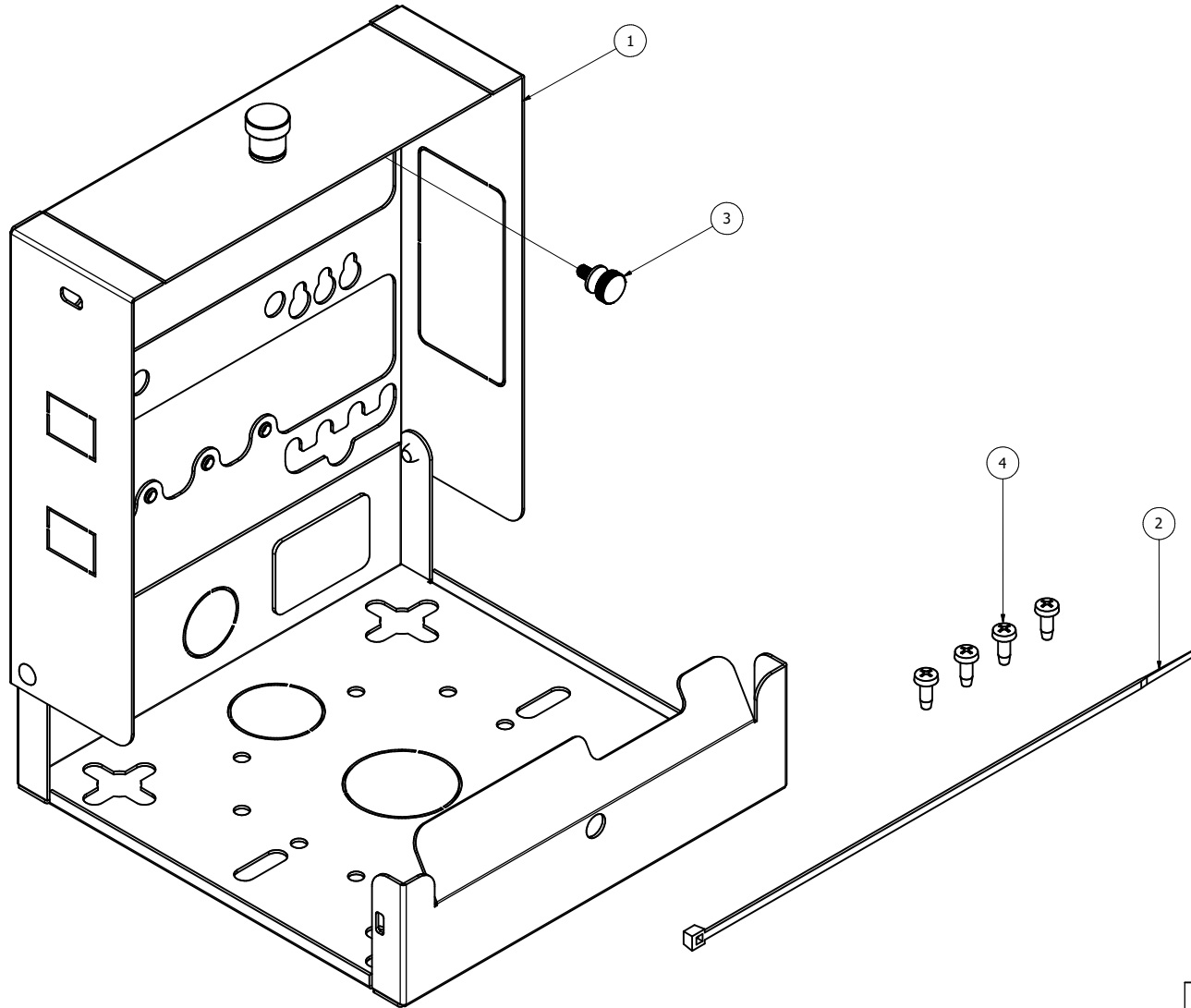


OVERVIEW



PARTS LIST		
ITEM	QTY	DESCRIPTION
1	1	Oberon Model 900-HC-XX
2	1	Cable Tie
3	1	Brass Set-Screw
4	4	#6 Thread-Cutting Screws

Oberon, Inc. - 1315 S. Allen St. - State College, PA 16801

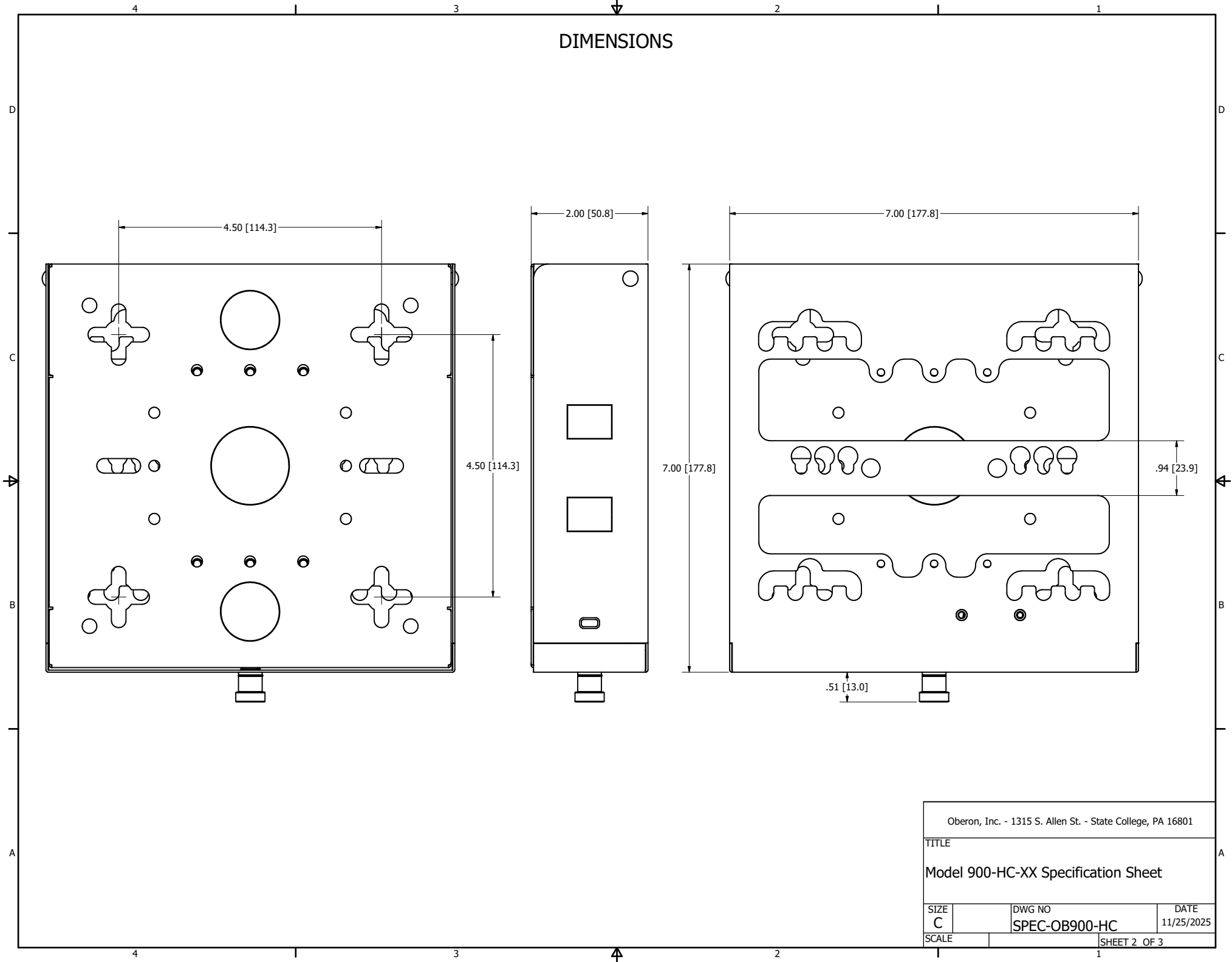
TITLE

Model 900-HC-XX Specification Sheet

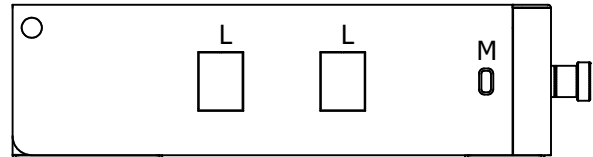
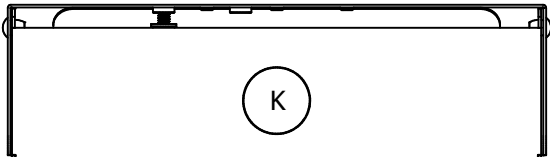
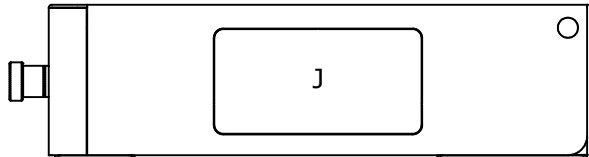
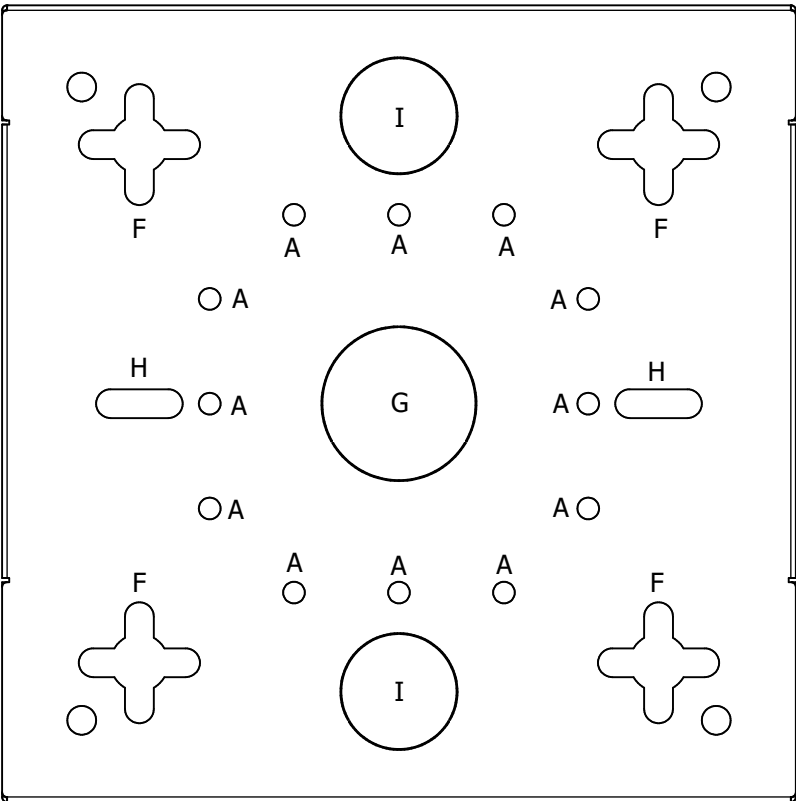
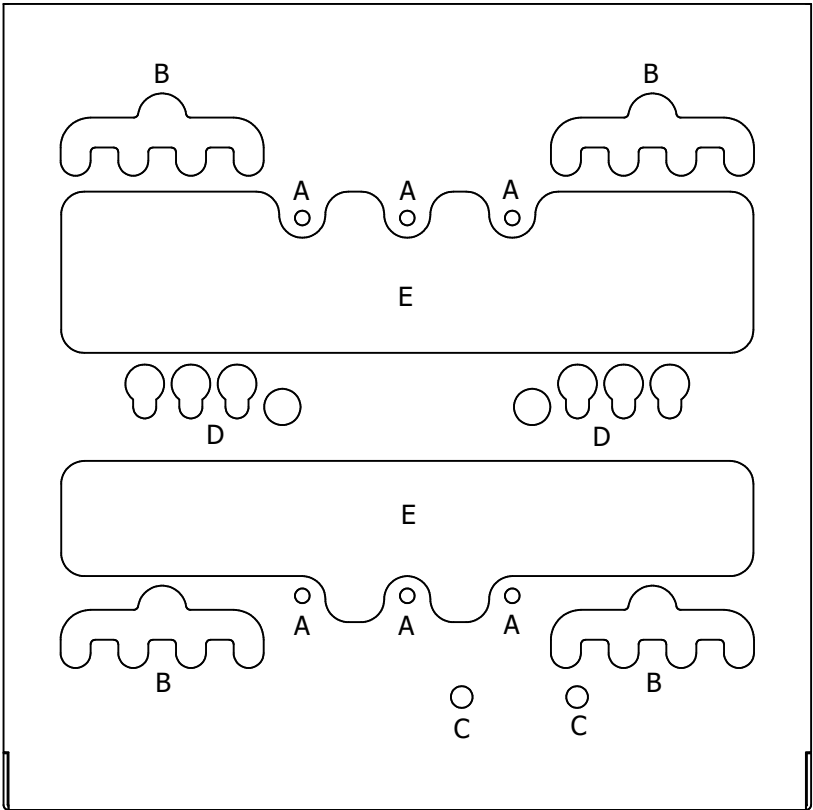
SIZE C	DWG NO SPEC-OB900-HC	DATE 11/25/2025
-----------	-------------------------	--------------------

SCALE	SHEET 1 OF 3
-------	--------------

DIMENSIONS



Oberon, Inc. - 1315 S. Allen St. - State College, PA 16801			
TITLE			
Model 900-HC-XX Specification Sheet			
SIZE	DWG NO	DATE	
C	SPEC-OB900-HC	11/25/2025	
SCALE		SHEET 2 OF 3	



Mounting Legend

- A - Single and Double Gang Junction Box
- B - Cisco or Juniper AP
- C - Cisco or Juniper Set Screw
- D - Aruba AP
- E - Integrated T-Bar
- F - Hard Wall or Ceiling Mounting
- G - Hanging Conduit Mounting or 1-inch Trade Size Knockout

- H - 39-TBAR-CLIP Accessory
- I - Firestop Grommet Knockout or 3/4-inch Trade Size Knockout
- J - Furniture Face Plate Knockout
- K - 1/2-inch Trade Size Knockout
- L - Keystone Jack Knockout
- M - Kensington Lock

Oberon, Inc. - 1315 S. Allen St. - State College, PA 16801		
TITLE		
Model 900-HC-XX Specification Sheet		
SIZE	DWG NO	DATE
C	SPEC-OB900-HC	11/25/2025
SCALE	SHEET 3 OF 3	