

CUBE-iT® Wall-Mount Floor-Supported Cabinet

The CUBE-iT® Wall-Mount Floor-Supported Cabinet protects and secures up to 40U of equipment in areas where floor space is limited.



Clik-Nut® Hardware Kits included.

ADVANTAGES

- ➔ **Easy Access to Equipment**
 - Three-part, swing-out design enables easy access to the front and rear of installed equipment
- ➔ **Airflow Options**
 - Multiple fan options to match heat load requirements
- ➔ **Increased Security**
 - A single lock and key on the front door provides access to the cabinet; the rear section is only accessible via internal latches inside the front door
- ➔ **Robust Equipment Support**
 - 1000 lb (453 kg) load rating supports heavier equipment
 - Includes two pairs of square-punched equipment mounting rails
- ➔ **Cable Management Options**
 - A host of optional cable management accessories help keep cables neat and organized

KEY FEATURES

- Three-part, swing-out design allows access and service to the front and rear of equipment. The cabinet body is supported on the floor by an attached wheeled base.
- A single lock and key on the front door provides access to the entire cabinet
- Cabinet body includes two pairs of adjustable depth 19" EIA square-punched equipment mounting rails and Clik-Nut Hardware Kit
- Rear panel includes 1" (25.4 mm) and 3" (76 mm) knockouts, and can accept 3/4" (19 mm) and 2.5" (63.5 mm) conduit. Edge-protection grommets are included for the 3" (76 mm) knockouts
- Rear panel features fixing points for cable slack management and attachment points for accessory rack-mount brackets
- Optional low-decibel (31 dB), dual-fan kit provides quiet operation while cooling equipment
- Factory-prepped bonding feature provides convenience and reduces installation time

SPECIFICATIONS

Description	Wall-mount, floor-supported enclosure with lockable front door and swing-out rear access to equipment
Use	For indoor use only, in environmentally controlled areas; may not be used outdoors, in harsh environments, or in air-handling spaces.
Available Sizes	<ul style="list-style-type: none"> • Heights: 60" (1520 mm), 72" (1830 mm)* • Widths: 27.3" (693 mm), 19" EIA rack-mount • Depths: 24" (610 mm), 30" (760 mm) <p>*Overall cabinet heights are 66" and 78", respectively, due to 6"H wheeled base</p>
Usable Interior Space	<ul style="list-style-type: none"> • Heights: 33U, 40U • Widths: 19" EIA rack-mount • Depths: refer to dimensions (page 2)
Cable Access	<ul style="list-style-type: none"> • (4) 1" (25.4 mm) knockouts, 2 top/2 bottom. Knockouts can accept 3/4" (19 mm) conduit • (10) 3" (76 mm) knockouts, 5 top/5 bottom. Knockouts can accept 2.5" (63.5 mm) conduit • (5) Edge-protection grommets are included for the 3" (76 mm) knockouts
Cable Fill Limits	Refer to TIA-569-D and NEC for conduit fills Refer to the CPI Cable Fill Table
Load Capacity	1000 pounds (453.6 kg) of equipment open or closed
Material	Steel sheet cabinet body, rear panel and door Door is solid metal or tinted tempered glass panel Equipment mounting rails are steel
Construction	Welded, riveted & bolted
Finish	Powder coat paint; Black or Glacier White
Certifications	EIA/ECA-310-E compliant

Global Availability

US & Canada

Simi Valley, CA
800-834-4969

Canada

Toronto, Ontario, Canada
+905-850-7770

chatsworth.com • techsupport@chatsworth.com

Europe

Buckinghamshire, UK
+44-1628-524-834

Middle East & Africa

Dubai, UAE
+971-4-2602125

Doha, Qatar
+974-4-267422

Latin America

+52-55-5203-7525
Toll Free within Mexico
800-201-7592
chatsworth.com.co

Asia Pacific

+86 21 6880-0266
chatsworth.com.cn



CHATSWORTH
PRODUCTS

SPECIFICATIONS:

Vertical Cable Management	<ul style="list-style-type: none"> • Supports Vertical Cabling Sections and Vertical Lashing Bracket (sold as accessories)
Equipment Support	<ul style="list-style-type: none"> • 2 pair C-shaped, depth-adjustable equipment mounting channels with square-punched mounting holes • Rack-mount spaces (U) marked and numbered on equipment mounting rails • Includes 50 each Clik-Nut Hardware Kit

USE WITH

- Universal Cable Runway
- Rack-Mount Shelf
- Saf-T-Grip® Straps
- Horizontal Rack Busbar
- Horizontal Switched eConnect® PDU
- RIM-750
- Ground Jumper

DIMENSIONS:

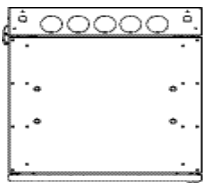
Space-Saving Design and Easy Access to Equipment

The CUBE-iT® Wall-Mount Floor-Supported Cabinet is designed to secure communications equipment for a cross connect. CUBE-iT Cabinets are copper- and fiber-ready and feature easy access to the front or the rear of the cabinet.

The swing-out, three-part design secures equipment while maintaining ease of access for serviceability. The rear chassis is only accessed by a keyed lock on the front door. Once unlocked, internal latches are accessible just inside the front door on the main chassis. Simply turn the levers to release the main chassis from the wall to gain access to the rear of equipment. Additionally, the cabinet is configurable for right or left swing.

The 5"D (130 mm) rear panel provides a space for terminating cables. The rear panel is prepunched along the top and bottom with conduit knockouts, allowing communications and power cables to be securely routed into the cabinet. Grommets are included to protect cables when conduit is not used. The interior of the rear panel has tie points for cables and attachment points for accessory equipment mounting brackets.

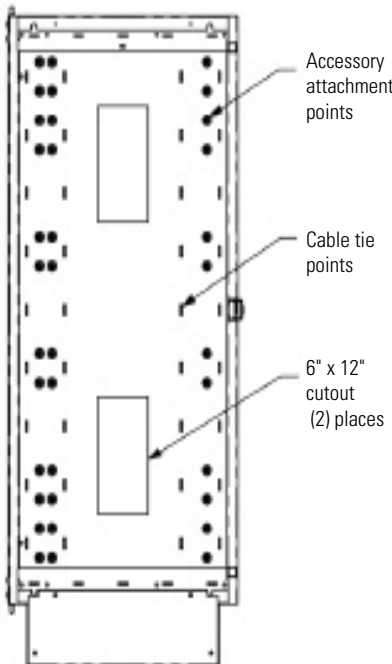
The main cabinet body includes two pairs of adjustable depth 19" EIA square-punched equipment mounting rails that can be used to support interconnect equipment and/or active components. The cabinet includes 50 units of Clik-Nut Hardware kit for quick, safe equipment mounting. Multiple fan options provide efficient equipment cooling.



Top View

Depth			
Overall - A	Cabinet Body - B	Max. Rail-to-Rail Spacing	Max. Equipment Depth
24.9" (633 mm)	18.1" (460 mm)	16.7" (424 mm)	22.2" (564 mm)
30.9" (785 mm)	24.1" (612 mm)	22.7" (576 mm)	28.2" (716 mm)

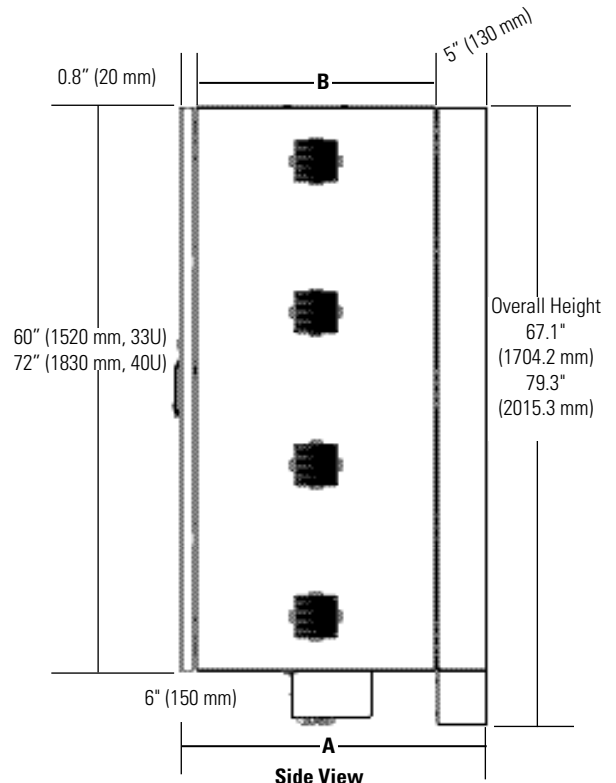
NOTE: Maximum equipment depth denotes values that still allow the center chassis to swing away from rear panel.



Rear Panel View (Interior Detail)



Front View

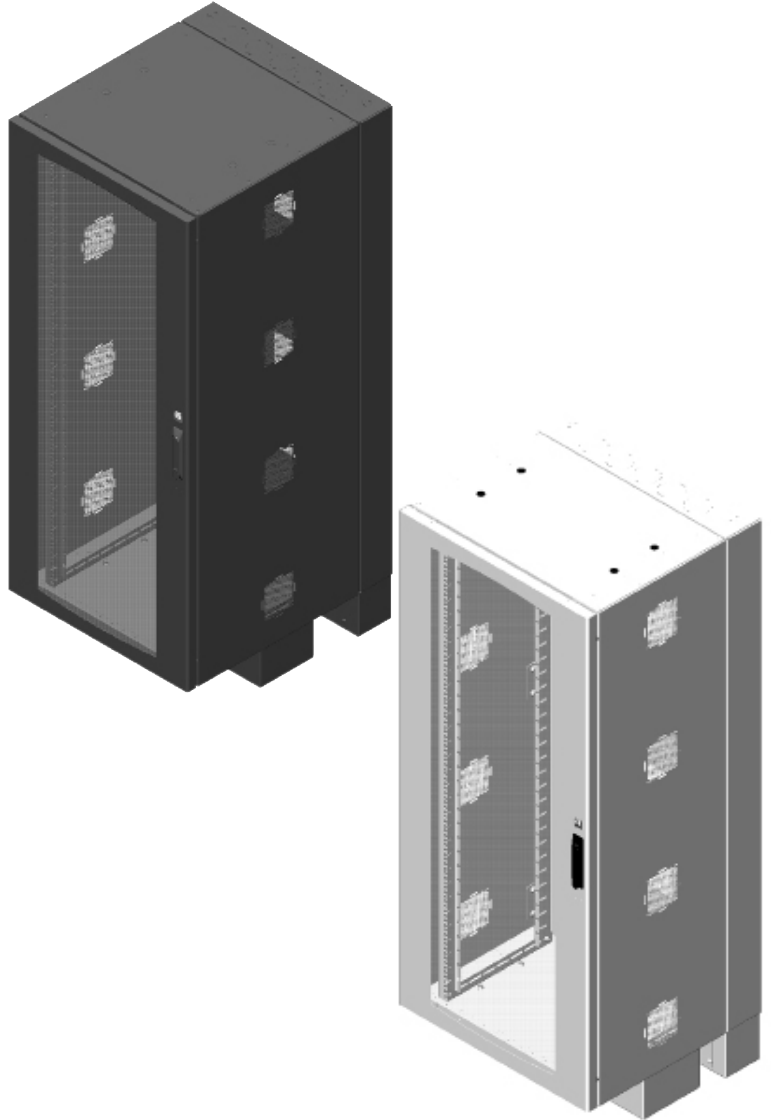


ORDERING INFORMATION:

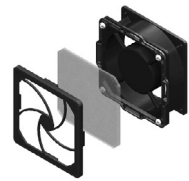
CUBE-iT Wall-Mount Floor-Supported Cabinets

60"H (1520 mm) CUBE-iT Cabinets			
Part Number	Cabinet Depth	Door Style	Shipping Weight lb (kg)
13492-X60	24" (610 mm)	Solid	248 (112.7)
13493-X60	30" (760 mm)	Solid	260 (118.2)
13495-X60	24" (610 mm)	Tempered Glass	278 (126.4)
13496-X60	30" (760 mm)	Tempered Glass	290 (131.8)
72"H (1830 mm) CUBE-iT Cabinets			
Part Number	Cabinet Depth	Door Style	Shipping Weight lb (kg)
13492-X72	24" (610 mm)	Solid	296 (134.5)
13493-X72	30" (760 mm)	Solid	309 (140.5)
13495-X72	24" (610 mm)	Tempered Glass	329 (149.5)
13496-X72	30" (760 mm)	Tempered Glass	342 (155.5)

X=Color, 7=Black, E=Glacier White



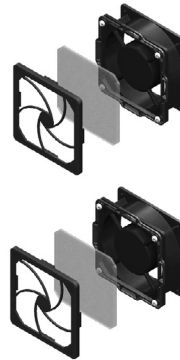
ACCESSORIES:



Standard Fan and Filter Kit for CUBE-iT Cabinet

- Pressurizes interior of the cabinet, forcing warm air out of open vents
- Assembly Includes 1 fan, 1 filter, and 1 vent cover
- Noise Level: 39 dB (measured at 3' (1 m) distance)
- Airflow: 115 CFM (170 CMH)
- 6'L (1.8 m) NEMA 5-15P/6-15P Power Cord

Part Number	Description	Shipping Weight lb (kg)
40972-001	115 Volt, 50/60 Hz, 5-15P power cord	2 (0.8)
40972-002	230 Volt, 50/60 Hz, 6-15P Power cord	2 (0.8)
40973-001	Replacement Filter Kit, Pack of 5	2 (0.8)



Low-Decibel Dual-Fan and Filter Kit for CUBE-iT Cabinet

- Pressurizes interior of the cabinet, forcing warm air out of open vents
- Assembly Includes 2 fans and 2 filters
- Noise Level: 31 dB (measured at 3' (1 m) distance)
- Recommended placement on bottom right and left sides of the cabinet
- Airflow: 120 CFM (204 CMH)
- 6'L (1.8 m) NEMA 5-15P/6-15P Power Cord

Part Number	Description	Shipping Weight lb (kg)
40975-001	115 Volt, 50/60 Hz, 5-15P power cord	4 (1.8)
40975-002	230 Volt, 50/60 Hz, 6-15P Power cord	4 (1.8)
40973-001	Replacement Filter Kit, Pack of 5	2 (0.8)

ACCESSORIES:



Vertical Cabling Section for CUBE-iT Cabinets

- Attaches to the outside edge of equipment mounting rails
- Openings align with rack-mount unit spaces on equipment mounting rails
- Sold in pairs
- Order additional kits as-needed per cable management requirements

Part Number	Description	Shipping Weight lb (kg)
40970-704	4U, 7"H x 0.5"D (178 mm x 13 mm)	3 (1.4)
40970-707	7U, 12.3"H x 0.5"D (311 mm x 13 mm)	3 (1.4)
40970-711	11U, 19.3"H x 0.5"D (489 mm x 13 mm)	4 (1.8)

Color is black.

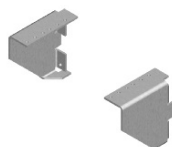


Vertical Lashing Bracket for CUBE-iT Cabinets

- Provides multiple lashing points for premise cables
- Attaches to center chassis with included hardware
- Adjustable front-to-rear

Part Number	Description	Shipping Weight lb (kg)
40971-X60	60"H x 4"W (1520 mm x 100 mm)	4 (1.8)
40971-X72	72"H x 4"W (1820 mm x 100 mm)	6 (2.7)

Note: X=Color; 7=Black and E=Glacier White



90° Mounting Bracket for CUBE-iT Cabinets

- Attaches to rear panel on CUBE-iT Cabinets
- Creates a 19" EIA x 2U vertical rack-mount space
- 2 brackets per kit, 3.9"H x 1"W x 4"D (99 mm x 25.4 mm x 101.6)

Part Number	Description	Shipping Weight lb (kg)
13285-501	2U, 1 pair, Clear finish	3 (1.4)



LED Light Kit for CUBE-iT Cabinets

- Attaches to the bottom, top or side of CUBE-iT Cabinets
- Toggle switch, 4W LED light
- Detachable, 120 VAC with NEMA 1-15P Power Cord

Part Number	Description	Shipping Weight lb (kg)
12803-701	LED Light Kit, 4W, 120 Vac	2 (0.9)

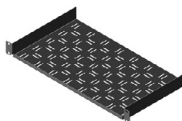


Horizontal Wire Management Bar for CUBE-iT Cabinets

- Attaches to the rear of the equipment mounting rails
- Secures premise cables after termination on patch panels
- Includes mounting hardware and 12 cable ties

Part Number	Description	Shipping Weight lb (kg)
11837-702	1.5"H x 19.3"W x 3.7"D (38 mm x 490 mm x 94 mm)	4 (1.8)

Color is black.



Rack-Mount Shelf

- For use with small equipment such as modems, routers and fiber modules in 19" EIA racks
- 1U; Includes multiples tie-down points
- Supports up to 20 lb (9.1 kg) of equipment

Part Number	Description	Shipping Weight lb (kg)
40974-X19	Rack-Mount Shelf, 1U x 19"W x 10"D (483 mm x 250 mm)	4 (1.8)

Note: X=Color; 7=Black and E=Glacier White



Ground Jumpers

- Provide common bonding from equipment rack or cabinet to halo conductor
- Available individually or in packages of 10
- Constructed of UL Listed components

Part Number	Description	Shipping Weight lb (kg)
40159-009	9' (2.7 m) Ground Jumper, 1 Each	2 (0.9)
40159-019	9' (2.7 m) Ground Jumper, 10 Each	20 (1.9)



Power Strip for CUBE-iT Cabinets

- Select straight or locking plug style
- 115 VAC; 15 Amp or 20 Amp
- 10'L (3 m) power cord and circuit breaker
- Includes (8) 5-20R outlets

Part Number	Description	Shipping Weight lb (kg)
12820-701	15A Power Strip, NEMA 5-15P	4 (1.8)
12820-702	15A Power Strip, NEMA L5-15P	4 (1.8)
12820-705	20A Power Strip, NEMA 5-20P	4 (1.8)
12820-706	20A Power Strip, NEMA L5-20P	4 (1.8)

Note: Surge-protected options available



CPI now offers Extended Limited Warranties on CPI-Branded Electronic products, available for two additional years beyond the expiration of the Original Warranty Period (3 years).

Contact CPI Customer Service, or visit www.chatsworth.com/warranty for more information.

Interested in learning more about CPI enclosure solutions? Call us at 800-834-4969, or email Technical Support at techsupport@chatsworth.com.



CHATSWORTH PRODUCTS

While every effort has been made to ensure the accuracy of all information, CPI does not accept liability for any errors or omissions and reserves the right to change information and descriptions of listed services and products. ©2022 Chatsworth Products, Inc. All rights reserved. Chatsworth Products, Click-Nut, CPI, CPI Passive Cooling, CUBE-iT, Secure Array, eConnect, Evolution, GlobalFrame, MegaFrame, QuadraRack, RMR, Saf-T-Grip, SeismicFrame, SlimFrame, TeraFrame, Motive and Velocity are federally registered trademarks of Chatsworth Products. EuroFrame, H-Plane, Hi-Bar, In-Plane, M-Frame, NetPoint, Simply Efficient, Skybar, Wi-Tile and ZetaFrame are trademarks of Chatsworth Products and Oberon, a division of Chatsworth Products. All other trademarks belong to their respective companies. Rev.5 08/22 MKT-60020-296