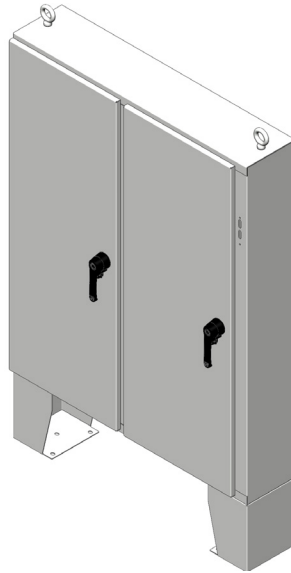


RMR® Flange-Mount Disconnect Enclosure, Floor-Mount

RMR® Flange-Mount Disconnect Enclosure, Floor-Mount, provides NEMA Type 4 or 4X protection for large electronic equipment. It is designed to house major brands of disconnect switches and circuit breakers. Floor stands elevate the enclosure above the floor for added clearance and easier cable access.

KEY FEATURES

- CPI Product Designer tool quickly configures a complete kit
- Standard cutout on the right flange provides mounting for major brands of disconnect switches and circuit breakers
- Continuous formed-in-place foam gasket
- Mechanical interlock ensures door(s) remain in the closed position when the disconnect switch is energized.
- Solid double door with 3-point latch and heavy-duty padlock defeater handle. Auxiliary ¼-turn latches are included on top and bottom of NEMA enclosures that are 31"W (787 mm) or wider
- Three lock styles available: keyed, double bit and square
- Grounding and bonding studs and wire included on doors and frame; bonding kit sold separately
- Removable floor stand is bolted to the frame
- Powder-coated paint or stainless steel Type 304 in No. 4 brushed finish



ADVANTAGES

- ➔ Continuous formed-in-place foam gasket technology and stainless steel option meet NEMA Type 4 or 4X protection ratings
- ➔ Floor stands provide additional clearance and easy access to bottom of enclosure for cable entrance and additional protection
- ➔ CPI Product Designer, free online configurator, allows quick selection of sizes and design configurations to match most requirements
- ➔ Solid, removable mounting plate (ordered separately) provides maximum mounting space for electrical controls and instrument equipment
- ➔ Stainless steel option provides NEMA Type 4X with high corrosion resistance



SPECIFICATIONS

Description	Industrial control enclosure for use in indoor and outdoor applications. Protects equipment against the ingress of dust, lint and other debris, as well as varying levels of protection against liquids, including an option for an additional level of protection against corrosion
Industry Standards	<p>NEMA Type 4, for outdoor use, is mild steel and protects against dirt, rain, sleet, snow, splash and hose down with noncorrosive liquid. It also meets NEMA Type 1, 3, 5, 12; and NEMA Type 2 and 3R with drain hole.</p> <p>Type 4 Enclosures are:</p> <ul style="list-style-type: none"> - UL Listed, Industrial Control Panel Enclosures, Type 1, 2, 3, 3R, 4, 5 and 12; File Number NITW.E473128 - UL Listed, Industrial Control Panel Enclosures for Canada, Type 1, 2, 3, 3R, 4, 5 and 12, File NITW7.E473128 - UL Classified to IP 66 Degrees of Protection by Enclosures Certified to IEC Publication, EOFI.E486325 RoHS, REACH <p>NEMA Type 4X, for outdoor or indoor use, is stainless steel and protects against dirt, rain, sleet, snow, splashing and hose-directed water, along with an increased level of corrosion protection. It also meets NEMA Type 1, 3, 3X, 4, 5, and 12 and NEMA Type 2, 3R, and 3RX with drain hole.</p> <ul style="list-style-type: none"> - NEMA Type 4X Enclosures are stainless steel Type 304 in No. 4 brushed finish
Overall Dimensions	Specific to each enclosure; see ordering information on following pages

Availability: US, Canada, Latin America, Europe and Middle East

US & Canada

+1-800-834-4969
 Toronto, Ontario, Canada
 +905-850-7770
 chatsworth.com
 techsupport@chatsworth.com

Latin America

+52-55-5203-7525
 Toll Free within Mexico
 01-800-01-7592
 chatsworth.com.co

Europe

+44-1628-524-834
 chatsworth.com

Middle East & Africa

Dubai, UAE
 +971-4-2602125
 chatsworth.ae

Asia Pacific

+86 21 6880-0266
 chatsworth.com.cn



CHATSWORTH
 PRODUCTS

SPECIFICATIONS

	<p>Frame:</p> <ul style="list-style-type: none"> - Welded, mild-steel or stainless steel Type 304; includes (2) heavy-duty lifting eye bolts on top - Standard cutout on right flange - Location for removable mounting plate included on the rear; plate ordered separately - Removable floor stands
Materials and Construction	<p>Door:</p> <ul style="list-style-type: none"> - Solid double door; 3-point latch mechanism with defeater handle; concealed hinges - Includes mechanical door interlock - Black powder-coated, zinc die cast, heavy-duty padlock defeater handle, accepts up to .38 in (9.5 mm) diameter padlock - Bonding stud and wire included - Locks: Keyed, double bit, squared; Sealing: Continuous formed-in-place foam gaskets
Finish	Mild-steel enclosures are painted Hammer Gray (RAL 7035), Gray ANSI 61, Black or stainless steel type 304 in No. 4 brushed finish. Additional finish options available upon request
Compliance	NEMA Type 1, 2, 3, 3R, 4, 4X, 5 and 12; IP 55 and IP 66

NEMA Type 4 and 4X Protection Ratings for Any Location

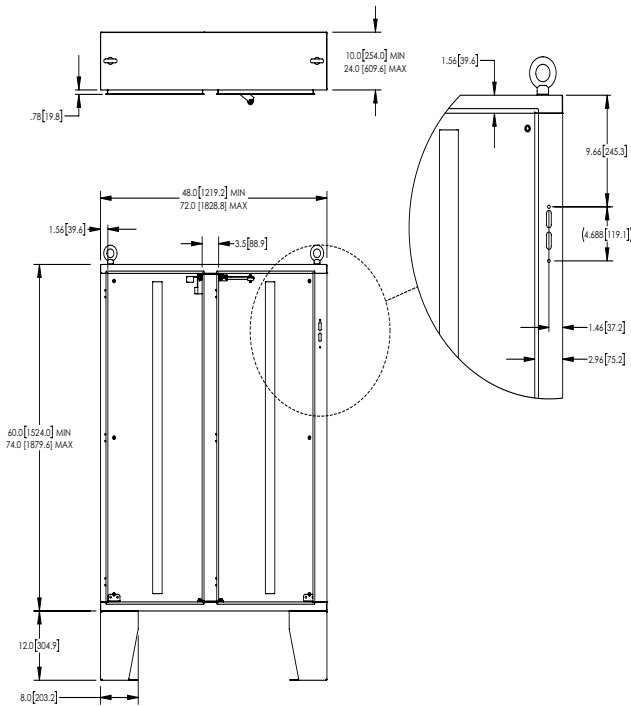
RMR® Flange-Mount Disconnect Enclosure, Floor-Mount, by Chatsworth Products (CPI) provide exceptional material ingress protection for panel-mount networking, automation, control and instrumentation equipment in indoor and outdoor locations. Stainless steel enclosures provide NEMA Type 4X protection ratings, with an added layer of protection against corrosion.

The floor stands provide additional clearance and easy access for cable access through the bottom of the enclosure. The floor stands are bolted onto the frame and can be easily removed for relocation of the enclosure.

Eight heavy-duty mounting studs on the rear of the enclosure accept a mounting plate.

DIMENSIONS

RMR Flange-Mount Disconnect Enclosure, Floor-Mount, Type 4 or 4X with Floor Stand and Solid Double Door (Series A30, mild steel; Series A70, stainless steel)

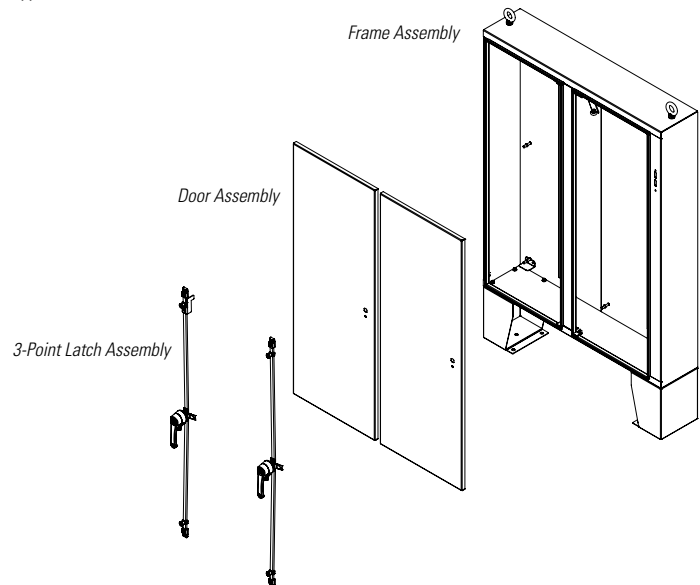
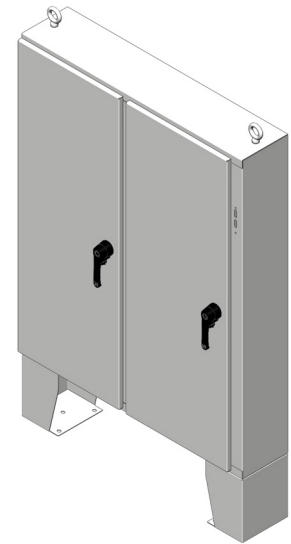


ORDERING INFORMATION

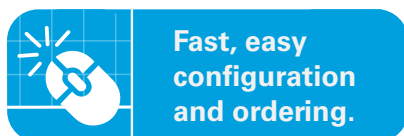
RMR Flange-Mount Disconnect Enclosure, Floor-Mount, Type 4 or 4X with Floor Stand and Solid Double Door

NEMA Type 4, for indoor or outdoor use, protects against dirt, rain, sleet, snow, splash and hose down with liquids. Stainless steel enclosures provide Type 4X protection ratings with an increased level of corrosion resistance.

- Designed for NEMA Type 4 or 4X applications. Also meets NEMA Type 1, 2, 3, 5, 12; and 3R with drain hole (hole must be between 1/8" to 1/4" (3 mm - 6 mm)
- Standard cutout accepts most standard disconnect handles
- Removable center beam
- 3 lock styles: keyed CH751, double bit and square
- Latch styles: 3-point mechanism with heavy-duty padlock defeater handle. Auxiliary ¼-turn latches are added on top and bottom of enclosures that are 31"W (787 mm) or wider
- Min and max height: 60"H - 74"H (1524 mm - 1880 mm)
- Min and max widths: 48"W - 72"W (1219 mm - 1829 mm)
- Min and max depths: 10"D - 24"D (254 mm - 610 mm)
- Removable floor stands
- Outdoor-rated paint: (colors): Gray ANSI 61, Hammer Gray RAL7035 and Black
- UL Listed Type 4 enclosures available in powder-coated paint finish in: Gray ANSI 61, Hammer Gray RAL7035 and Black. NEMA Type 4X enclosures are available in stainless steel Type 304 in No. 4 brushed finish
- Series A30, mild steel, and Series A70, stainless steel, families of enclosures



Additional Sizes Available Online

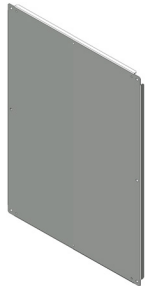


CPI Product Designer creates unique industrial enclosures quickly and easily by allowing you to select the size, features and accessories needed for a specific application. Access this tool at www.chatsworth.com/product-designer.

GENERAL ACCESSORIES



Use the Product Designer to add accessories to your enclosure, or order them separately as shown below. Go to www.chatsworth.com/product-designer to select your RMR Industrial Enclosure.



Solid Mounting Plates

Solid Mounting Plates are solid metal panels that are installed at the rear of the enclosure frame. A variety of network, automation and control equipment devices can be installed onto the mounting plate for flexible support configurations.

Go to the CPI Product Designer to get the right mounting plate size automatically specified for you.



RMR Enclosure Grounding and Bonding Kit

The RMR Enclosure Grounding and Bonding Kit adds additional bonding capacity to the enclosure or to bond the optional mounting plate to the enclosure.

- Includes jumpers and hardware
- Compatible with RMR Floor-Mount, RMR Free-Standing and RMR Standard Wall-Mount Enclosures

Part Number	Shipping Weight lb (kg)
DF0023-000000-001	0.5 (0.2)



RMR Enclosure Threaded Drain Plug Kit

The RMR Enclosure Threaded Drain Plug Kit allows accumulated or condensed water to drain out the bottom of the enclosure. The drain plugs vent air out of the enclosures, helping to equalize air pressure. Install drains at the bottom of the enclosures.

- Kit includes vent drain, mesh and retaining nut
- Compatible with all RMR Enclosures

Part Number	Shipping Weight lb (kg)
DF0025-000000-001	1 (0.5)

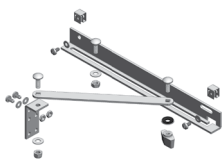


RMR Enclosure XL Polyvent Protective Vent Kit

The RMR Enclosure XL Polyvent Protective Vent Kit provides ventilation and equalizes air pressure in the event of drastic temperature changes. Pressure equalization is essential to protect the enclosure seal from damage. Installation hardware included.

- Kit includes vent and retaining nut
- Compatible with all RMR Enclosures

Part Number	Shipping Weight lb (kg)
DF0028-000000-001	0.5 (0.2)



RMR Enclosure Door Stop Kit

The RMR Enclosure Door Stop Kit secures the door of the enclosure in the open position. It can be mounted on either left- or right-hinged doors. Includes mounting hardware.

- Kit includes door stop and mounting hardware
- Compatible with RMR Floor-Mount, RMR Free-Standing and RMR Standard Wall-Mount Enclosures

Part Number	Shipping Weight lb (kg)
DF0022-000000-001	4 (2.2)



DF0030-000000-001



DF0031-000000-001

LED Light Kit

The LED Light Kit provides additional lighting inside the enclosure.

- 2 types available: On-off switch or motion sensor
- Voltage: 100 - 240 V, 50/60 Hz
- NEMA 1-15P power cord

Part Number	Description	Shipping Weight lb (kg)
DF0030-000000-001	On-off Switch	0.5 (0.2)
DF0031-000000-001	Motion Sensor	0.5 (0.2)



RMR Enclosure Drip Shield Assembly

Required to meet NEMA Type 3R when using a NEMA Type 12 enclosure. It is used to provide additional protection against ice and rain.

Go to CPI Product Designer to configure an RMR Enclosure with Drip Shield Assembly.

Interested in learning more about our RMR Industrial Enclosures? Call us at 800-834-4969, or email Technical Support at techsupport@chatsworth.com.