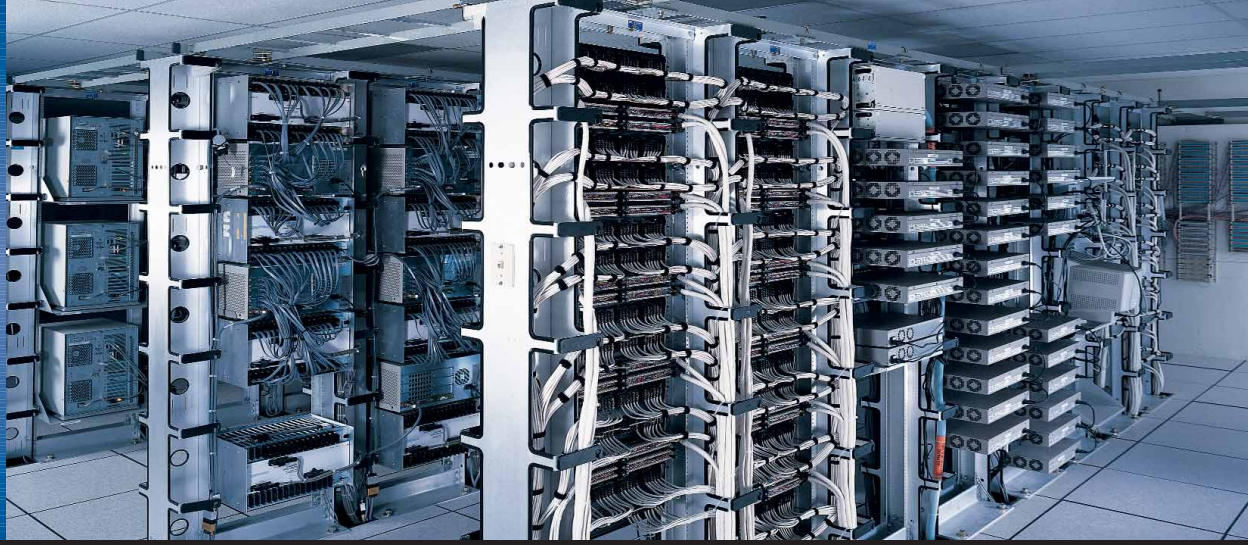




CHATSWORTH
PRODUCTS, INC.

COMPANY PROFILE



Founding

In 1991, utilizing a leveraged Employee Stock Ownership Plan (ESOP), 90 employees orchestrated a buyout of a Fortune 500 company division and founded Chatsworth Products, Inc. (CPI). The results speak for themselves — sales volume has expanded dramatically, staff has been increased and new operating units have been established. To accommodate this explosive growth, the company now maintains operations in Chatsworth, Calif., New Bern, N.C., and Georgetown, Texas.

Company Culture

As a 100% employee-owned company, each employee-owner recognizes that delighting the customer is the most important ingredient in CPI's success. The company operates within a philosophy of individual employee empowerment, teamwork and mutual respect. Employee-owners are encouraged to make decisions that directly impact their areas of responsibility and establish an open dialogue with those impacted by an action. A core principle of the company articulates that successful customer relationships are based on a series of win-win scenarios. It is not enough to merely produce products that set quality standards for the industry. Customer issues are addressed immediately and in a way that assures complete — and lasting — satisfaction.

Product Innovation

CPI is universally recognized as the supplier of choice for structural support systems used to Organize, Store and SecureSM valuable computer, data and communications equipment. A history of ongoing innovation is revealed throughout CPI's extensive product catalog and by numerous patents awarded for industry-leading design concepts. The convenient catalog (available in online, CD and print formats) showcases the company's full line of Open Mounting Systems, Enclosed Mounting Systems, Cable Pathway Support Products, and Zone Enclosures for Cabling and Wireless Solutions. Included is an easy-to-use layout guide to assist customers with specific installation requirements irregardless of their levels of experience in system planning. For special needs, CPI's Technical Support Specialists assist in the development of unique product solutions tailored specifically to customer requirements.

Worldwide Distributor Network

CPI markets high-quality, innovative products through a worldwide network of major distributors, Servicing Systems Integrators and Value Added Resellers.

Call Toll-Free (U.S. and Canada): 800-834-4969
Email: techsupport@chatsworth.com
Website: www.chatsworth.com



Schedule
Contract GS-35F-0184N

Company Overview

Founded	July 1991
Shareholder Structure	100% employee-owned
Sales Growth	Over 1000% since inception
Corporate Philosophy	<i>"We're All In This Together"</i>
Operating Units	Chatsworth, Calif. New Bern, N.C. Georgetown, Texas
Corporate Office	Westlake Village, Calif.
Distribution	International
Method of Distribution	Network of global distributors

Industries Served

Information Technology and Communications

Product Offering

Product solutions to Organize, Store and Secure computer and communications equipment

Trademarks

CPI®
Saf-T-Grip®
MegaFrame® Cabinet Systems
Seismic Frame® Cabinet
Datacom Framework Systems®
Universal Rack™
CatRack™ Cable Management Systems
Structured Termination™ Systems
Cube-iT Plus™ Wall-Mount Cabinet
SlimFrame™ Cabinet System
QuadraRack™ Server Frame
The Choice Of Leading Technology CompaniesSM
Organizing. Storing. Securing.SM

The Intelligent Catalog

An industry first, CPI's Intelligent Catalog empowers consultants, designers, specifiers and end-users with online resource tools and a library of in-depth product information — customized to the user's specific requirements. For designing data centers, a state-of-the-art electronic catalog saves CPI's customers and sales channel partners valuable time and increases the accuracy of product orders. Comprehensive product details (configured according to attributes specified by the user), interactive specification and comparison tables, and supporting information (including photographs, drawings and technical documents) have been integrated into the source tool. Specified users are given access to online graphical configuration tools for creating a detailed Bill of Materials supported by downloadable product specifications. Thus, proposals are created quickly and accurately.

United States Federal Business

GSA Contract No. GS-35F-0784N

CPI is listed with the General Services Administration (GSA) under Federal Supply Schedule 70 for General Purpose Commercial Information Technology Equipment, Software and Services. Products are available through GSA Advantage. CPI products are also available through Government Wide Acquisition Contracts (GWACS), including GSA Connections and the National Institutes of Health Information Technology Acquisition and Assessment Center - Electronic Commodity Store III (NITAAC-ECS III). For more information, visit www.chatsworth.com/fedgov.htm



**CHATSWORTH
PRODUCTS, INC.**

*An Employee-Owned
Corporation*



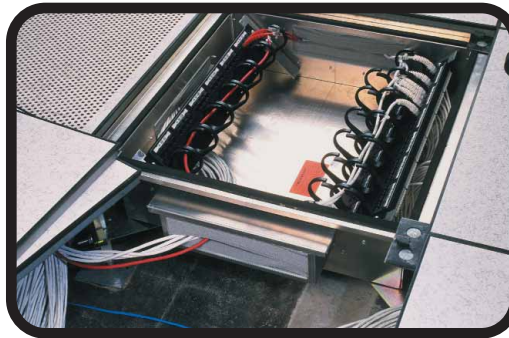
**OPEN MOUNTING
SOLUTIONS**



**ENCLOSED MOUNTING
SOLUTIONS**



**CABLE PATHWAY
SUPPORT SOLUTIONS**



**ENCLOSURE SOLUTIONS
FOR ZONE CABLING AND
WIRELESS NETWORKS**

Corporate Office

Westlake Village, Calif.
818-735-6100
818-735-6199 Fax

Georgetown Operations

Georgetown, Texas
512-863-7800
512-869-1374 Fax

Chatsworth Operations

Chatsworth, Calif.
818-882-8595
818-718-0473 Fax

New Bern Operations

New Bern, N.C.
252-514-2779
252-514-2977 Fax

Mexico

011 (52) 55 5203 7525
011 (52) 55 5203-7757 Fax